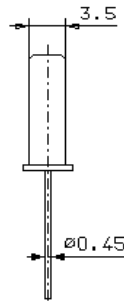
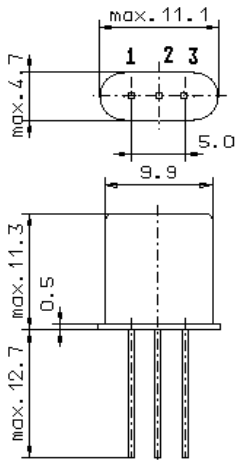


Specification for monolithic crystal filter:

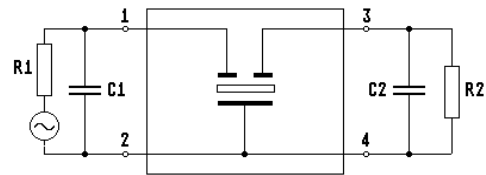
**MQF 10.7-0750 / 01**

## 1. General

### 1.1. Package:



GH3



- |                                   |                  |
|-----------------------------------|------------------|
| 1.2. Type name:                   | MQF 10.7-0750/01 |
| 1.3. Number of poles:             | 2                |
| 1.4. Operating temperature range: | -40°C to +85°C   |
| 1.5. Storage temperature range:   | -55°C to +85°C   |

## 2. Electric values

- |   |   |
|---|---|
| 2.1. Nominal centre frequency $f_0$ :                                       | 10.7 MHz                                      |
| 2.2. <b>Pass band</b>   |   |
| 2.2.1. Bandwidth between 3 dB - frequencies:                                | $\geq f_0 \pm 3.75$ kHz                       |
| 2.2.2. Ripple:  | $\leq 0.5$ dB at $f_0 \pm 2.5$ kHz            |
| 2.2.3. Insertion loss:<br>( measured on smallest attenuation in pass band ) | $\leq 1.5$ dB                                 |
| 2.3. <b>Stop band</b>   |   |
| 2.3.1. $f_0 \pm 18$ kHz   | $\geq 20$ dB                                  |
| 2.3.2. $f_0 \pm 300$ kHz..... $\pm 1000$ kHz                                | $\geq 35$ dB                                  |
| 2.4. Terminating impedance ( input and output ):                            | $1800 \Omega // 3.5$ pF                       |
| 2.5. Maximum input power level:   | +10 dBm / +20 dBm ( operating / non-damaged ) |
| 3. Marking:   | manufacturer, date code<br>10.7-0750/01       |
| 4. Environment conditions:  | Corresponding to Vectron standard CF001       |

Edited by: \_\_\_\_\_ date: \_\_\_\_\_ name: \_\_\_\_\_