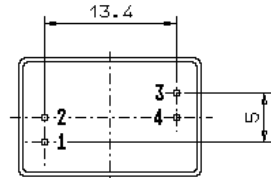


Specification for monolithic crystal filter:

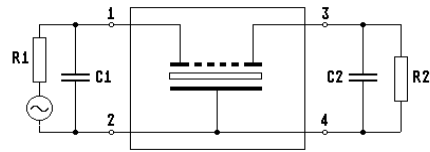
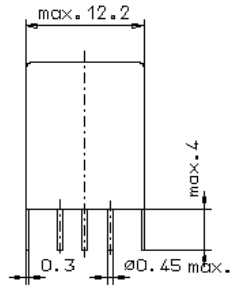
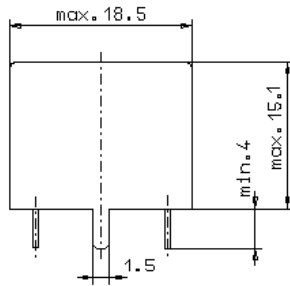
MQF 10.7-0750/23

1. General

1.1. Package:



GV5.1



- 1.2. Type name: MQF 10.7-0750/23
- 1.3. Number of poles: 8
- 1.4. Operating temperature range: -40°C to +80°C
- 1.5. Storage temperature range: -55°C to +85°C

2. Electric values

- 2.1. Nominal centre frequency f_0 : 10.7 MHz

2.2. Pass band

- 2.2.1. Bandwidth between 3 dB - frequencies: $\geq f_0 \pm 3.75$ kHz
- 2.2.2. Ripple: ≤ 2.0 dB at $f_0 \pm 3.0$ kHz
- 2.2.3. Insertion loss: ≤ 3.5 dB
(measured on smallest attenuation in pass band)

2.3. Stop band

- 2.3.1. $f_0 \pm 8.75$ kHz ≥ 65 dB
- 2.3.2. $f_0 \pm 12.5$ kHz..... ± 500 kHz ≥ 90 dB

- 2.4. Terminating impedance (input and output): $2200 \Omega // 2.0$ pF

- 3. Marking: manufacturer, date code
10.7-0750/23

- 4. Environment conditions: Corresponding to Vectron standard CF001

Edited by: _____ date: _____ name: _____