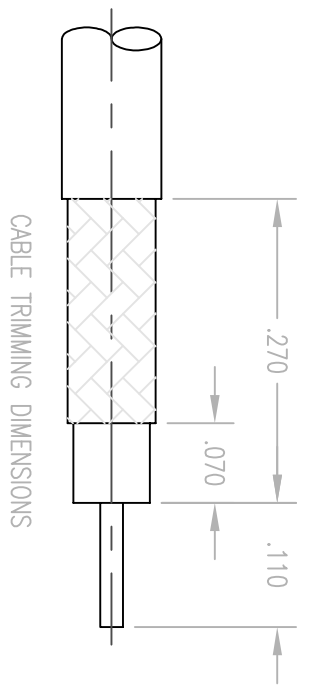
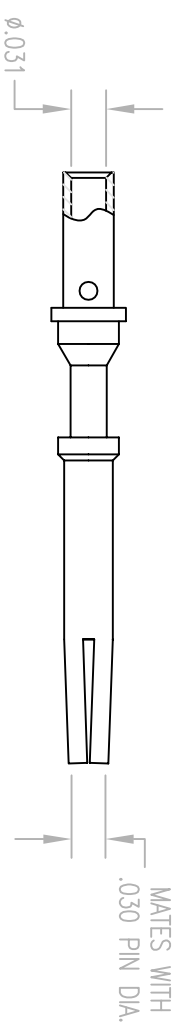
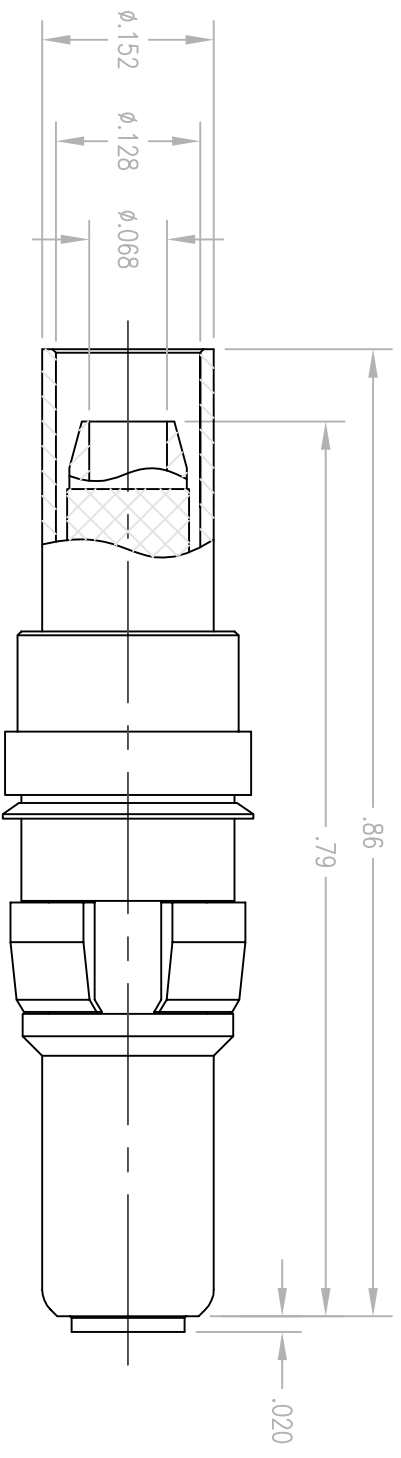


REV.	DESCRIPTION	DATE	BY
-	GENERATED FOR CUSTOMER	4/7/00	JED



NOTES:

1. MATERIALS:

- FERRULE AND BODY: BRASS PER ASTM B16
- CLIP RING: PHOSPHOR BRONZE PER ASTM B103
- CONTACT: BERYLLIUM COPPER PER ASTM B196
- INSULATOR: TEFLON PER ASTM D1710

2. FINISH:

- BODY AND CONTACT: .000030 MIN. GOLD PER MIL-G-45204 OVER
 .000050 MIN. NICKEL PER QQ-N-290
- CLIP RING: .000100 MIN. NICKEL PER QQ-N-290
 OVER COPPER FLASH
- SPRING WASHER AND FERRULE: .000005 MIN. GOLD PER MIL-G-45204 OVER
 .000050 MIN. NICKEL PER QQ-N-290

- 3. FOR USE WITH RG-316 CABLE OR EQUIVALENT.
- 4. FOR CABLING USE PROCEDURE 9-07
- 5. CRIMP FERRULE USING .128 HEX DIE.

PER ASME Y14.5M-1994 UNLESS OTHERWISE SPECIFIED: TOLERANCES ARE IN INCHES (MM)		PER ASME Y14.5M-1994 UNLESS OTHERWISE SPECIFIED: TOLERANCES ARE IN INCHES (MM)		PER ASME Y14.5M-1994 UNLESS OTHERWISE SPECIFIED: TOLERANCES ARE IN INCHES (MM)	
DIMENSIONS: .XX ± .01/0.254 .XXX ± .005/0.127 ANGLES: 3° Z		DIMENSIONS: .XX ± .01/0.254 .XXX ± .005/0.127 ANGLES: 3° Z		DIMENSIONS: .XX ± .01/0.254 .XXX ± .005/0.127 ANGLES: 3° Z	
SCALE: 6:1		SCALE: 6:1		SCALE: 6:1	
CUSTOMER DRAWING				TITLE	
DRAWN BY: JED DATE: 4/7/00		CHECKED: [] DATE: []		RDM - HF STRAIGHT PLUG CAPTIVE CONTACT (CRIMP/CRIMP)	
APPROVED: [] DATE: []		APPROVED: [] DATE: []		A 290-910-0632G SFT. 1 OF 1 REV. -	

Litton
 Winchester/Reticon
 400 Park Road
 Watertown, Connecticut 06095