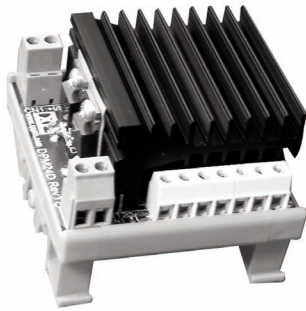


DPM Series



- Diode Protection Module
- 24 or 48 VDC Input
- 50 A Maximum Current
- Single and Dual Channel
- DC OK Signal
- DIN Rail Mounting
- Parallel Operation

Specification

General

- Relay Contacts • 1 pole changeover, 1 A 24 VDC
- Screw Terminal Sizes • Power - suitable for 2.5 mm² cable,
Alarm - suitable for 1.0 mm² cable
- Mounting • DIN Rail

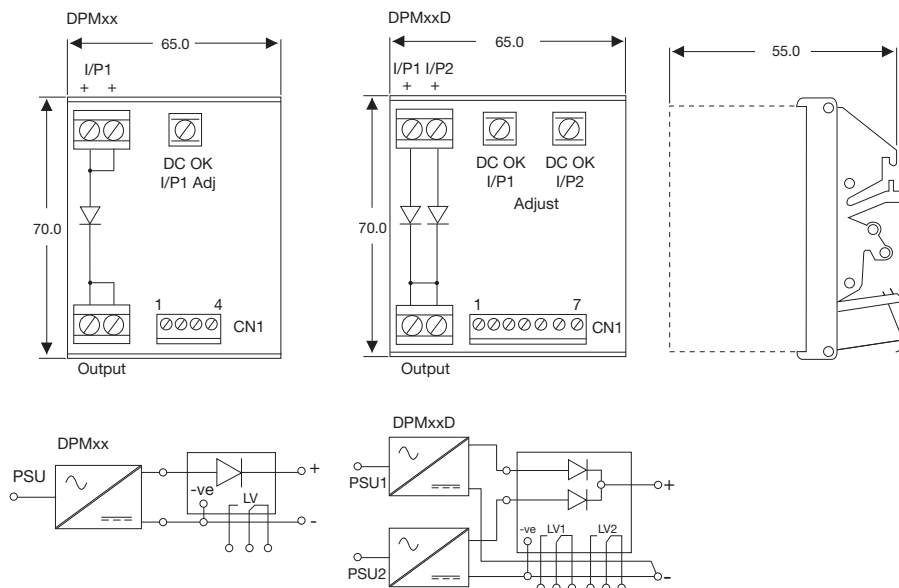
Environmental

- Operating Temperature • 0 °C to +50 °C
- Storage Temperature • -40 °C to +85 °C
- Temperature Humidity • 90 % non-condensing

Output Voltage & Current Ratings

Input Voltage	Output Voltage	Channels	Rating Per Channel	DC Low Alarm Adjustment	Model Number
18 - 32 VDC	V _{in} - 0.6 V max	Single	25 A	18 - 30 V	DPM24
18 - 32 VDC	V _{in} - 0.6 V max	Dual	25 A	18 - 30 V	DPM24D
38 - 60 VDC	V _{in} - 0.6 V max	Single	25 A	40 - 58 V	DPM48
38 - 60 VDC	V _{in} - 0.6 V max	Dual	25 A	40 - 58 V	DPM48D

Mechanical Details



DPMxxD		
Pin	Function	
1	- ve	Reference for control signal circuitry
2	Normally Open	Input 1 Signal Relay
3	Common	
4	Normally Closed	
5	Normally Open	Input 2 Signal Relay
6	Common	
7	Normally Closed	

DPMxx		
Pin	Function	
1	- ve	Reference for control signal circuitry
2	Normally Open	Signal Relay
3	Common	
4	Normally Closed	

Notes

1. All dimensions in mm.
2. Weight 0.11 kg.
3. Alarm will change state when input falls out of regulation.
4. Alarm contacts shown in de-energised state.