

SP4T

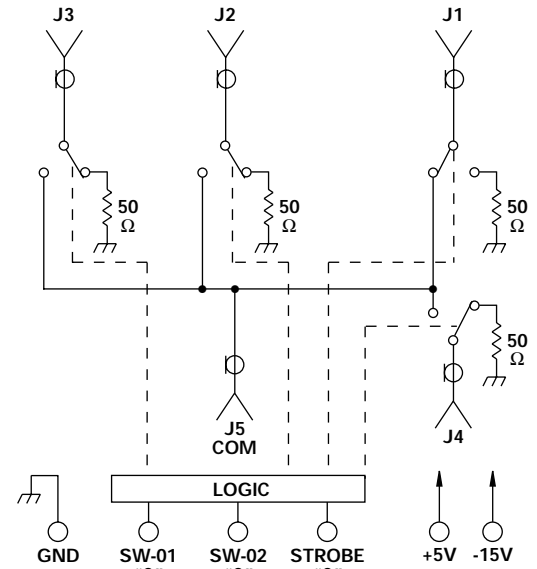
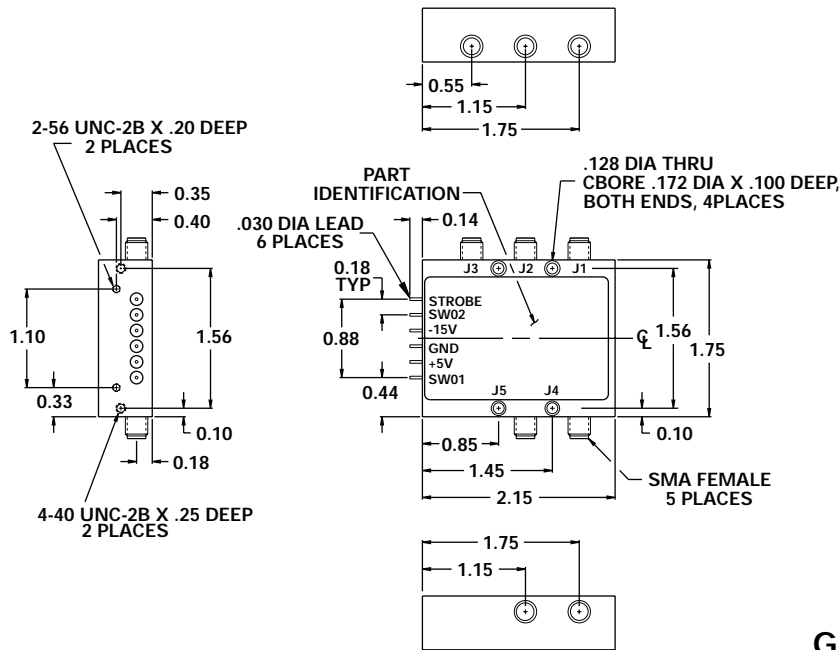
FEATURES

- 1 - 1200 MHz
- High Intercept Points
- 80 dB Isolation
- 1.25 dB Insertion Loss
- TTL Control
- Non-Reflective
- SMA Connectors



MODEL NO.
DSW46194

GaAs SP4T

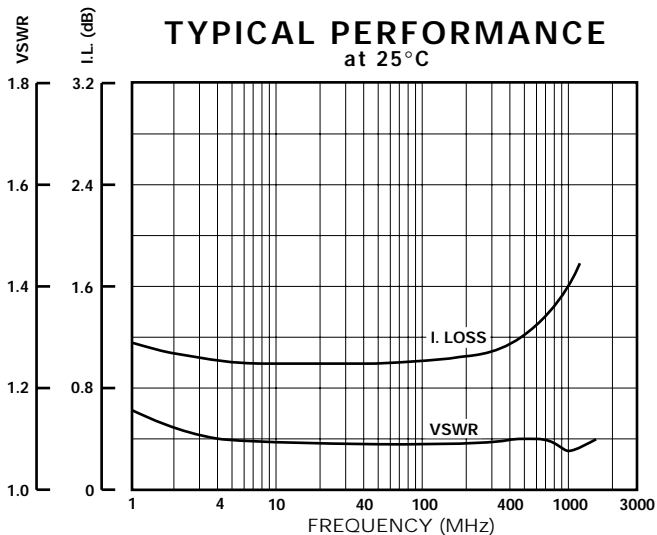


GUARANTEED PERFORMANCE

Parameter	Min	Typ	Max	Units	Conditions	
Operating Frequency	1		1200	MHz		
DC Current		27 40	43 53	mA	At +5 VDC Supply At -15 VDC Supply	
Control Type				TTL	See Logic Chart	
Control Current				High Low μA μA	V _{IH} = +2.7V V _{IL} = +0.5V	
Isolation	70	80		dB	500 - 1000 MHz	
Insertion Loss		1.25 1.70	1.5 2.0	dB	1 - 100 MHz 100 - 1200 MHz	
		Amp Balance Phase Balance	±0.1 ±1	±0.3 ±2.0	dB DEG	Port to Port, REF J4 Port to Port, REF J4
VSWR		Thru Termination	1.15/1 1.25/1	1.25/1 1.5/1		
Impedance			50	OHMS		
Switching Speed			7.5 10	μSEC	50% TTL to 90% / 10% RF	
Transition (Rise/Fall) Time			3	μSEC	10% / 90% or 90% / 10% RF	
Switching (Video) Transients			-80 -70	dBm		
Intercept Points	2nd 3rd	+70 +80 +35 +40	+76 +100 +38 +61	dBm dBm dBm dBm	1 - 20 MHz 20 - 1200 MHz 1 - 20 MHz 20 - 1200 MHz	
RF Power	Operate No Damage		+14 +17 +30 +30	+12 +15 +20 dBm	1 - 2 MHz 2 - 20 MHz 20 - 1200 MHz (0.1 dB Compression)	
Operating Temperature	0	+25	+75	°C	TA	

TYPICAL PERFORMANCE

at 25°C



LOGIC TABLE

Strobe	SW-02	SW-01	Function
0	0	0	J5 - J1
0	0	1	J5 - J2
0	1	0	J5 - J3
0	1	1	J5 - J4
1	X	X	Last State When Strobe was at a low level

X = Don't Care