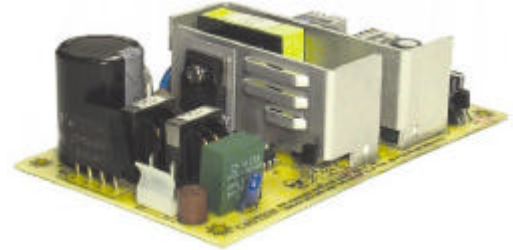


## OPEN FRAME

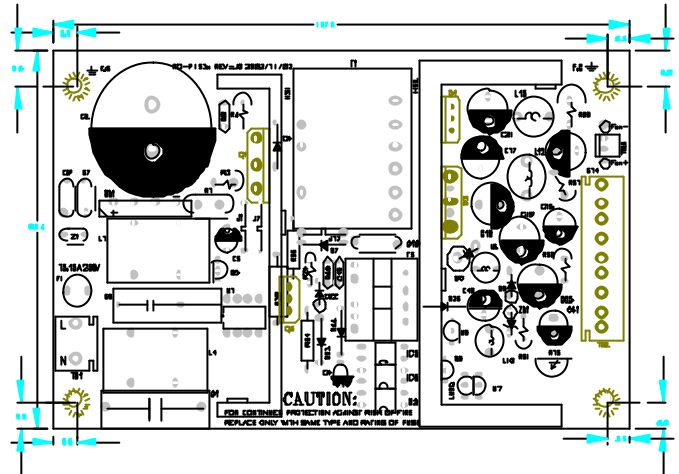
## ENO-0680 80W

### Features

Open Frame  
 Remote on/off sensing, Power good TTL Signal  
 Short Circuit, Over Current & Voltage Protection  
 High Efficiency



### Mechanical Drawing



### Apply for

All Intel Processors upto P4  
 All AMD Processors upto Athlon

### Environmental Specification

Operating / Storage Temp      0 ~ 50°C / -20 ~ 60°C  
 Relative Humidity                5 ~ 95%  
 Operating / Storage Altitude    10,000 / 50,000 FT  
 MTBF                                100,000 HRS  
 Safety Approvals                 UL/CUL, TUV,  
 EMC Regulations                 FCC, CE

### Electrical Specifications

Input Voltage                      110 - 240VAC  
     Full range  
 Frequency                         47 ~ 63 Hz  
 Input Current                      2A @ 115VAC  
     1A @ 230VAC  
 Hold up time                        16ms@ full load

### Output Specification

	Voltage Regulation	Minimum		Peak
		Load	Load	Load
+5Vsb	+/- 5%	0.15A	0.55A	0.6A
+5V	+/- 5%	2.0A	10A	11A
+12V	+/- 5%	0.3A	2.5A	2.8A
-12V	+/- 10%	0.15A	0.55A	0.6A

### TB1 : Input Connector Assign

AC L   
 AC N

### TB2 . Output Connector Assign

+12V Output   
 +5V Output   
 +5V Output   
 Ground   
 Ground   
 Ground   
 -12V Output   
 +5Vsb Output   
 DC On/Off

Dimension ( W x L x H ) : 137.5 x 83.4 x 86 mm

### USA OFFICE

#### ENHANCE ELECTRONICS

13100 ALONDRA BLVD., UNIT 106,  
 CERRITOS, CA 90703

TEL : +1 562 677 1268 FAX : +1 562 677 126 9  
 E-MAIL : sales@enhanceusa.com

WWW.ENHANCEUSA.COM

### EUROPE OFFICE

#### ENHANCE EUROPE INTERPAC B.V

ESSEBAAN 40, 2908 LK CAPELLE  
 AAN DEN IJSSEL, THE NETHERLANDS

TEL : +31 10 284 0870 FAX : +31 10 284 0873  
 E-MAIL : kathryn@interpacbv.com

WWW.ENHANCE-EUROPE.COM