

PLEASE CHECK WWW.MOLEX.COM FOR LATEST PART INFORMATION

Part Number: **0757051504**
Status: **Active**
Overview: GbX I-Trac™ Backplane Connector System
Description: GbX I-Trac™ Vertical Header Module, 1.85mm by 3.70mm Pitch, Unguided, Open Ends, 11 Rows, 5 Columns, 110 Circuits, Mating Pin Length 5.70mm

Documents:

[3D Model](#) [Packaging Specification PK-70873-587 \(PDF\)](#)
[Drawing \(PDF\)](#) [RoHS Certificate of Compliance \(PDF\)](#)
[Product Specification PS-75710-999 \(PDF\)](#)

Agency Certification

UL E29179

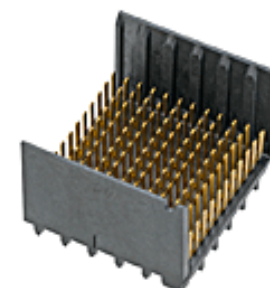
General

Product Family Backplane Connectors
Series 75705
Application Backplane, Midplane, Orthogonal
Component Type PCB Header
Overview GbX I-Trac™ Backplane Connector System
Product Name GbX I-Trac™
UPC 822350731782

Physical

Circuits (Loaded) 110
Circuits (maximum) 110
Color - Resin Black
Durability (mating cycles max) 200
First Mate / Last Break No
Flammability 94V-0
Guide to Mating Part No
Keying to Mating Part None
Material - Metal High Performance Alloy (HPA)
Material - Plating Mating Gold
Material - Plating Termination Tin
Material - Resin High Temperature Thermoplastic
Net Weight 3.610/g
Number of Columns 5
Number of Pairs 6, Open Pin Field
Number of Rows 11
Orientation Vertical
PC Tail Length 2.10mm
PCB Locator No
PCB Retention None
PCB Thickness - Recommended 1.60mm
Packaging Type Tray
Pitch - Mating Interface 1.85mm, 3.70mm
Pitch - Termination Interface 1.00mm, 2.70mm
Plating min - Mating 0.762µm
Plating min - Termination 0.762µm
Polarized to PCB No
Stackable Yes
Surface Mount Compatible (SMC) Yes
Temperature Range - Operating -55°C to +80°C
Termination Interface: Style Through Hole - Compliant Pin

Electrical



Series image - Reference only

EU ELV

Not Relevant

EU RoHS

Compliant

China RoHS

REACH SVHC

Not Contained Per
-ED/79/2015 (17
December 2015)

Halogen-Free

Status

Low-Halogen

Need more information on product environmental compliance?

Email productcompliance@molex.com
Please visit the [Contact Us](#) section for any non-product compliance questions.

China ROHS
ELV

Green Image
Not Relevant

Search Parts in this Series

75705 Series

Mates With

75710 GbX I-Trac™ Right Angle Receptacle Module

Use With

78232 GbX I-Trac™ Vertical Power Receptacle. 75234 Backplane Free Standing Guide Pin

Application Tooling | FAQ

Tooling specifications and manuals are found by selecting the products below. Crimp Height Specifications are then contained in the Application Tooling Specification document.

Global

Description

Product #

Current - Maximum per Contact	1.0A
Data Rate	12.0 Gbps
Real Signals (per 25mm)	148
Shield Type	N/A
Shielded	No
Voltage - Maximum	120V AC (RMS)/DC

Solder Process Data

Lead-free Process Capability	N/A
------------------------------	-----

Material Info**Reference - Drawing Numbers**

Packaging Specification	PK-70873-587
Product Specification	PS-75710-999
Sales Drawing	SD-75705-001

Press-In Tool	<u>0622018601</u>
Vertical Header 11- Row, 5-Column Backplane Insertion	<u>0621005110</u>
Tool for Signal Contact Insertion	

This document was generated on 06/09/2016

PLEASE CHECK WWW.MOLEX.COM FOR LATEST PART INFORMATION