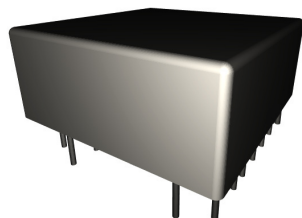


40D/43D-6A Series

Multiplexer



PRODUCT DESCRIPTIONS

This series was designed as an extended life version of the 40D-4A/42D-4A Series, and comes in the arrangements of 1-6 and 6-6 outputs. The main features of this series are a coaxial shield covering the high frequency range up to 2.5 GHz, and a magnetic shield enabling high-density mounting. These features make this series ideal for cost sensitive DRAM device test and VXI/PXI.

SPECIFICATIONS



40D/43D-6A Series		40D-6A□2N1		43D-6A□2N1		Multiplexer
Parameters	Units	6 Form A (1-6,6Drives)		6 Form A (6-6,6Drives)		Test Conditions
Coil Specifications						
Nominal Coil Voltage	VDC	5.0	12.0	5.0	12.0	±10% @ 20°C 15°C to 35°C
Coil Resistance	Ω	120	600	120	600	
Operate Voltage	VDC Max	2.8	9.6	2.8	9.6	
Release Voltage	VDC Min	0.7	1.2	0.7	1.2	
Contact Ratings						
Switching Voltage	Volts	100		100		Max DC/Peak AC resistance
Switching Current	Amps	0.5		0.5		Max DC/Peak AC resistance
Carry Current	Amps	1.0		1.0		Max DC/Peak AC resistance
Contact Rating	Watts	10		10		Max DC/Peak AC resistance
Life Expectancy	x10 ⁶ Cycle	1000		1000		@ 1V 10mA
Contact Resistance	mΩ	150		150		Max initial @ operate voltage
Contact Resistance Stability	mΩ	5.0		5.0		Max initial @ operate voltage
Relay Specifications						
Insulation Resistance	Ω Min	10 ¹¹		10 ¹¹		Between all isolated pins @ 100V 20°C 40%RH
Dielectric Strength	VDC Min	200		200		Between contacts
	VDC Min	200		200		Contacts to shield
	VDC Min	200		200		Contacts/Shield to coil
Operate Time (Including Bounce)	msec Max	0.35		0.35		@ nominal coil voltage 100Hz square wave
Release Time	msec Max	0.25		0.25		Diode suppression
Environmental Ratings						
Measurement Reference Conditions		Storage temp: -40°C to +85°C				
Temp: 15°C to 35°C		Operate temp: -20°C to +60°C				
Humidity: 25% to 75%RH		Vibration: 20G's to 2000Hz				
Atmospheric Pressure: 860 to 1060hpa		Shock: 50G's				

Ordering Code:

40D-6A□2N1

□=1 (5.0VDC), 2 (12.0VDC)

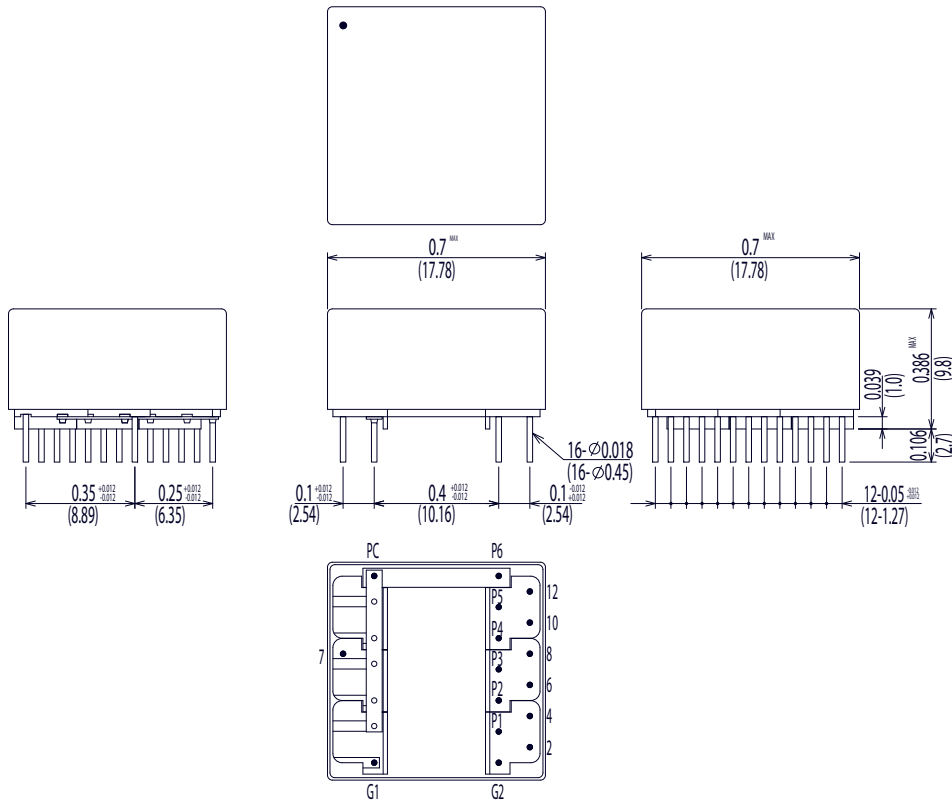
43D-6A□2N1

□=1 (5.0VDC), 2 (12.0VDC)

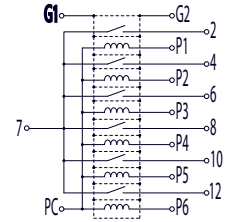
Dimensions

All Dimensions are inches (mm)

40D-6A□2N1

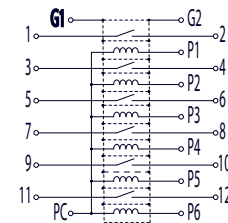
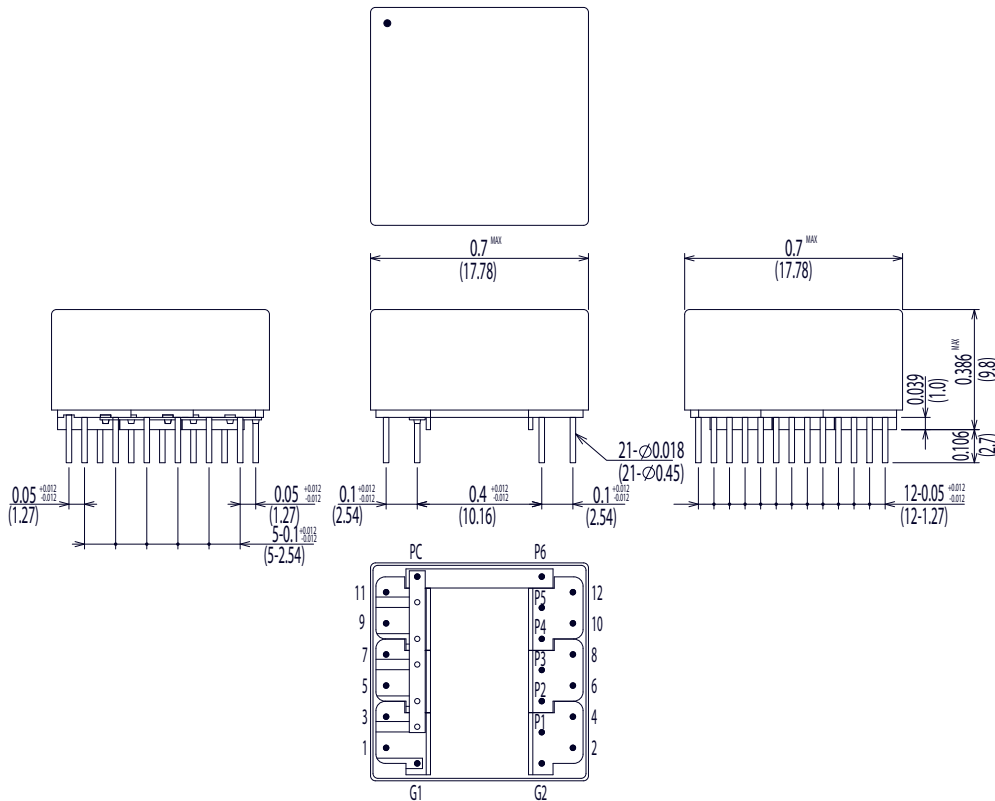


Schematic <Top View>



CONTACT	COIL
7-2	PC-P1
7-4	PC-P2
7-6	PC-P3
7-8	PC-P4
7-10	PC-P5
7-12	PC-P6

43D-6A□2N1



CONTACT	COIL
1-2	PC-P1
3-4	PC-P2
5-6	PC-P3
7-8	PC-P4
9-10	PC-P5
11-12	PC-P6