

### N-48X

#### Electrical Specifications (@25°C)

1. Maximum Power: 15 VA
2. Input Voltage: 115 V, 50 / 60 Hz
3. Output Voltage: 115V  $\pm$  5%
4. Full Secondary Load: 0.13 Amps RMS
5. Voltage Regulation: 20 % TYP @ full load to no load

#### Description:

The N-48X is power transformer for isolating equipment from direct connection to the power line. It is constructed with nonconcentrically wound coils. The primary and secondary are wound on separate arbors, then assembled on a laminate core side-by-side separated by insulation. This prevents electrical connection under normal or overload conditions between the primary and secondary windings.

#### Safety:

These units are designed with 1500V isolation between winding to winding and between winding and core. Materials and construction are rated for Class B insulation system.

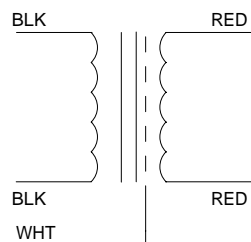
#### Dimensions: Unit: In inches

A	B	C	D
1.937	3.312	2.00	2.812

Weight: 1.35 lbs

Connections: 7.0 $\pm$ 1" leads, 0.250 $\pm$ 0.062" Skin & Tin

#### Schematic:



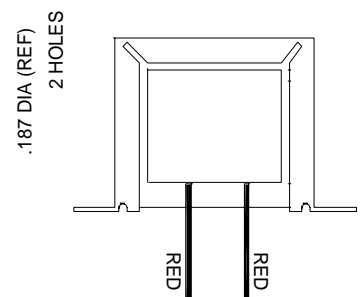
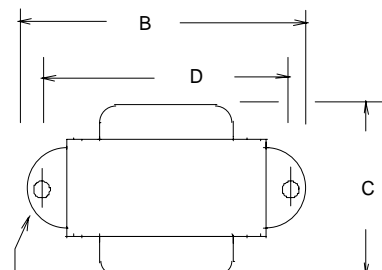
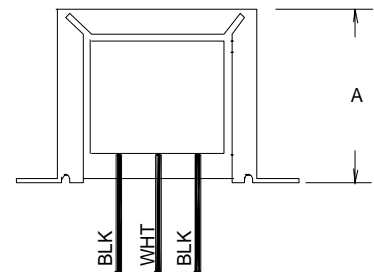
**Input:** Blk to Blk

**Output:** Red to Red

**Shield:** Wht

**RoHS Compliance:** As of manufacturing date February 2005, all standard products meet the requirements of 2002/95/EC, known as the RoHS initiative.

\* Upon printing, this document is considered "uncontrolled". Please contact Triad Magnetics' website for the most current version.



# Mouser Electronics

Authorized Distributor

Click to View Pricing, Inventory, Delivery & Lifecycle Information:

[Triad Magnetics:](#)

[N-48X](#)