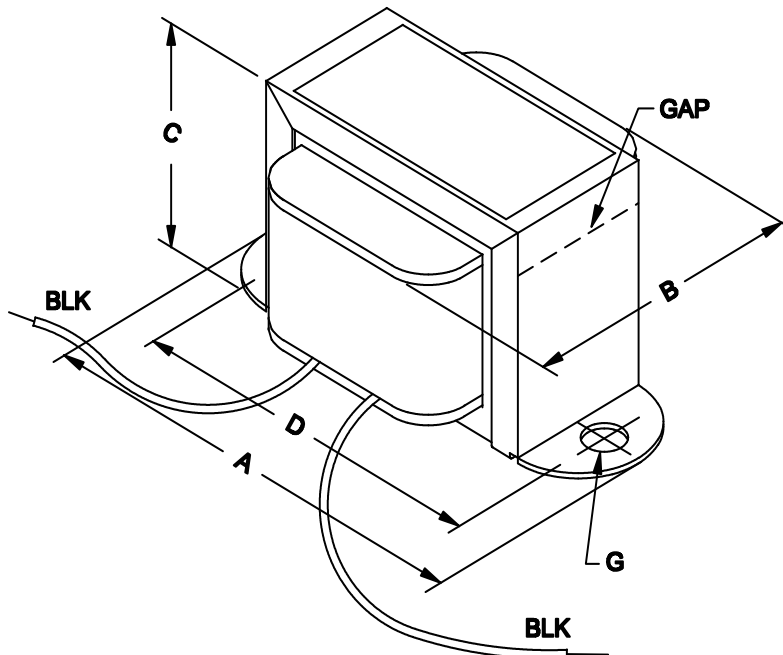




## D.C. Reactors or Filter Chokes Low to Medium Current

### Features

- Economical “open bracket” - channel mount.
- Tolerance of 15% on both inductance & resistance.
- Inductances measured at rated D.C. current.
- Minimum 5” long leads.
- Units will exhibit less inductance at slightly higher currents or more inductance at lower currents.
- Perfect for high voltage power supply filtering.
- Every unit is Hipot tested (100%) at 1,500 VAC
- Units are vacuum impregnated with polyurethane varnish for quiet and long life operation.



Mechanical	
A	4.03" / 102.4 mm
B	2.25" / 57.2 mm
C	2.63" / 66.8 mm
D	3.56" / 90.4 mm
G	0.19" / 4.8 mm
Weight	2.5 lbs / 1.13 kg
Electrical	
Inductance (+/- 15%)	60mH
D.C. Current	2.0 A
Resistance (+/- 15%)	0.7 ohms
Maximum Operating Volt (D.C.)	500V