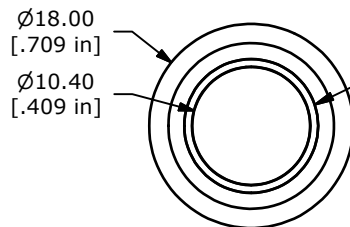


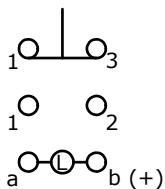
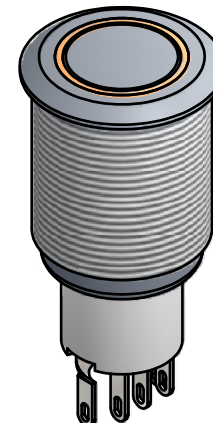
PANEL CUTOUT  
MAX. PANEL THICKNESS  
14.0mm [.551]

SWITCH FUNCTION	
POS. 1	POS. 2
ON	(ON)
1-3	1-2

(ON) = MOMENTARY



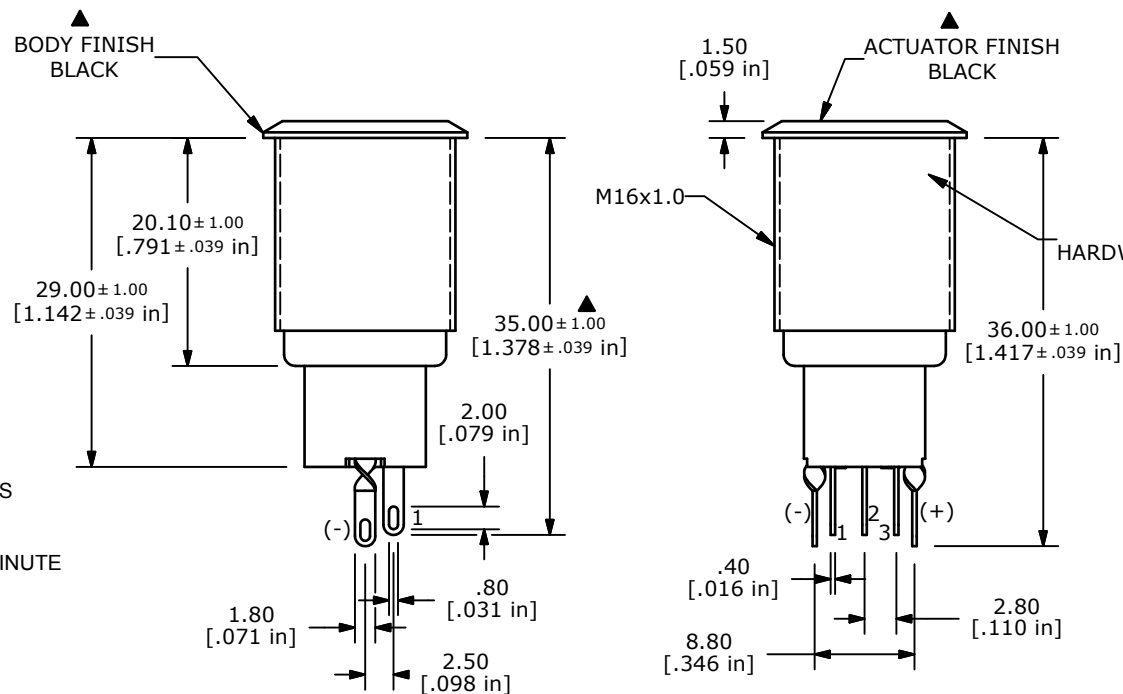
RING ILLUMINATION  
COLOR: TRANSPARENT ORANGE



CONTACT CONFIGURATION

NOTE:

1. ALL DIMENSIONS IN MM [INCH]
2. GENERAL TOLERANCE: X.X=±0.4  
X.XX=±0.25
3. TERMINAL NUMBERS FOR REF ONLY
- ▲ 4. CONTACT MATERIAL: SILVER
5. RATING: 2A 48VDC
6. ELECTRIC LIFE: 50,000 MAKE-AND-BREAK CYCLES AT FULL LOAD.
7. INSULATION RESISTANCE: 1,000 MΩ MIN.
8. DIELECTRIC STRENGTH: 2,000 VAC MIN. FOR 1 MINUTE
9. CONTACT RESISTANCE: 50mΩ MAX. @ 1A 12VDC
10. OPERATING TEMP.: -20°C to 55°C
11. ▲ DENOTES CRITICAL PARAMETER.
- ▲ 12. LAMP VOLTAGE: 12V
- ▲ 13. ILLUMINATION COLOR: ORANGE
14. HARDWARE SUPPLIED: O-RING AND HEXNUT
- ▲ 15. INGRESS RATING: IP40
16. 2002/95/EC (ROHS) COMPLIANT



NOTE 14  
HARDWARE SUPPLIED



TITLE PV3F2B011-324

C	20398	CORRECT IP RATING NOTE	01/12/12	BMA
REV	PCR NO	DESCRIPTION	DATE	BY

THE INFORMATION CONTAINED IN THIS DOCUMENT IS PROPRIETARY TO E-SWITCH AND IS NOT TO BE COPIED OR TRANSFERRED

SCALE	DATE	DR	DWG	REV
1.5:1	1/6/2012	BMA	52-PV3F2B011324	C