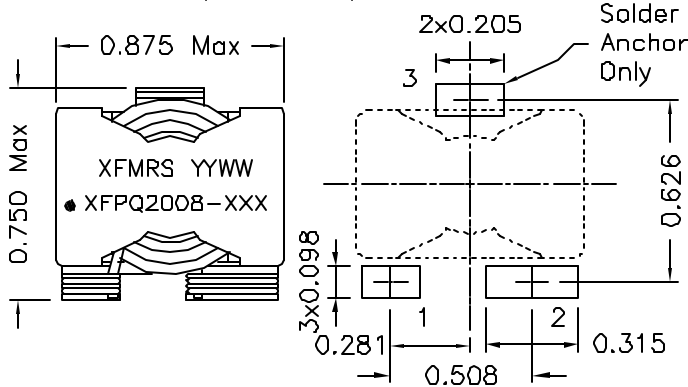
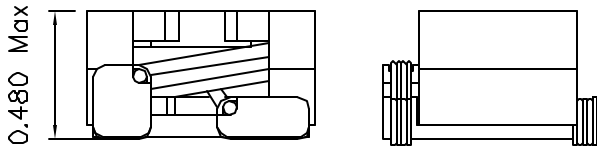
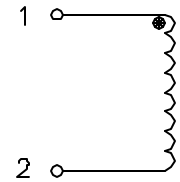


XFPQ2008 SMT POWER INDUCTORS

- High Inductance, High DC Current Capability
- True Surface Mount Design
- Custom designs available At No Extra Charge
- Economical Low Cost Solution For All Your Power Needs
- Industrial Operating Temp: -40 to +85°C
- Flamability Rating: UL94V-0
- RoHS Compliant Component



Schematic:



TOLERANCES:
 .xxx 0.010
 Dimensions in Inch

Part Number	Inductance @0Adc (uH ±10%)	Inductance @Irated (uH Typ)	Irated (Adc)	DCR (mOhms ±8%)	Saturation Current Isat (A Typ)		Heating Current Idc (ATyp)	Core Loss Factor K2
					25°C	100°C		
XFPQ2008-5R8K	5.8	5.8	14.4	4.4	22	17	14.4	155
XFPQ2008-7R8K	7.8	7.8	13.3	5.1	18	16	13.3	181
XFPQ2008-100K	10.2	10.2	12.5	5.8	16	15	12.5	206
XFPQ2008-160K	16.0	16.0	9.9	9.1	12	11	9.9	258
XFPQ2008-190K	19.4	19.4	8.5	12.6	11	10	8.5	284
XFPQ2008-230K	23.0	23.0	8.0	13.7	9.8	8	8.1	310
XFPQ2008-270K	27.0	26.2	7.8	14.9	9	8	7.8	335
XFPQ2008-310K	31.4	30.6	6.7	20.2	8.4	8	6.7	361
XFPQ2008-360K	36.0	35.2	6.0	21.6	8	6	6.5	387
XFPQ2008-390K	38.9	37.5	6.0	18.8	6.3	6	6.2	482
XFPQ2008-410K	41.0	40.0	6.0	23.1	7.3	6	6.2	413
XFPQ2008-580K	57.8	57.8	5.0	34.5	6.2	5	5.1	490

Notes:

Saturation Current: 10% drop in Inductance
 Heating Current: 40°C Temp Rise

1. Solderability: Leads shall meet MIL-STD-202G, Method 208H for solderability.
2. Flammability: UL94V-0
3. ASTM oxygen index > 28%
4. Insulation System: Class F 155°C. UL file E151558
5. Operating Temperature Range: All listed parameters are to be within tolerance from -40°C to +85°C
6. Storage Temperature Range: -55°C to +125°C
7. Aqueous wash compatible
8. SMD Lead Coplanarity: ±0.004*(0.102mm)
9. Electrical and mechanical specifications 100% tested
10. RoHS Compliant Component