

ATLANTIC VERSION TERMINATOR INTERFACE ADAPTER	PART NUMBER	REVISION	DESCRIPTION	FEED TYPE	CONVERT TO	PART NUMBERS REQUIRED					
	2150245-1	C	FINE CRIMP HEIGHT ADJUST	MECHANICAL	PNEUMATIC FEED	2119950-1	2119792-1	-	2119641-1	-	2063440-1
	2150245-2	C	FINE CRIMP HEIGHT ADJUST	PNEUMATIC	SERVO LATCH PLATE	2119951-1	1901697-1	8-2150245-5	-	-	2168400-7 (QUANTITY 2)
					SMART APPLICATOR	2161326-1	-	8-2150245-4	-	-	-
					MECHANICAL FEED	2119949-1	2063961-1	5-18022-5	2119653-1	-	-
	2150245-5	C	FINE CRIMP HEIGHT ADJUST	SERVO LATCH PLATE ⁴	SERVO LATCH PLATE	2119951-1	1901697-1	8-2150245-5	-	-	2168400-7 (QUANTITY 2)
					SMART APPLICATOR	2161326-1	-	8-2150245-4	-	-	-
					MECHANICAL FEED	2119949-1	2063961-1	5-18022-5	2119653-1	-	-
2150245-6	C	NON-CRIMP HEIGHT ADJUST	SERVO LATCH PLATE ⁴	-	-	-	-	-	-	-	
2150245-7	C	FINE CRIMP HEIGHT ADJUST	NONE	-	-	-	-	-	-	-	
7-2150245-7	A	CRIMP TOOLING KIT	-	-	-	-	-	-	-	-	

APPLICATOR DATA		
CRIMP	SIZE	TYPE
WIRE	5.33 mm [.210]	F
INSUL	-	-
APPLICATOR INSTRUCTIONS 408-10390		

TERMINAL DATA: TE TERMINAL	TE CRIMP SPECIFICATION
TERMINAL NAME: TERMINAL, RING	
WIRE STRIP LENGTH 5.54-6.30 mm [.218-.248 IN]	INSULATION DIAMETER RANGE Ø 0.0 mm [.000-.000 IN]
TERMINAL APPLICATION SPECIFICATION 114-2084	
TERMINALS APPLIED	
TE TERMINAL 40523	TE TERMINAL 40524
TE TERMINAL 41090	TE TERMINAL 41911

WIRE SIZE	CRIMP HEIGHT mm [INCH]	CRIMP HEIGHT REFERENCE SETTING
10 AWG	3.43 +/- 0.05 [.135 +/- .002]	3.0
12 AWG	3.12 +/- 0.05 [.123 +/- .002]	6.6
14 AWG	2.74 +/- 0.05 [.108 +/- .002]	11.0

- 1 RECOMMENDED SPARE PARTS
- 2 GREASE BEARING SURFACES LIGHTLY
- 3 LUBRICATE DAILY PER THE APPLICATOR INSTRUCTION SHEET SUPPLIED WITH THE APPLICATOR.
- 4 APPLICATOR SPECIFIC DATA TO BE ENTERED INTO BLANK MEMORY CHIP AT ASSEMBLY. SEE BELOW FOR PART NUMBER:
MECHANICAL FEED WITH "SMART APPLICATOR" CONVERSION: 8-2150245-4
PNEUMATIC FEED WITH "SMART APPLICATOR" CONVERSION: 8-2150245-4
SERVO FEED WITH "FINE CRIMP HEIGHT ADJUST": 8-2150245-5
SERVO FEED WITH "NON-CRIMP HEIGHT ADJUST": 8-2150245-6
- 5 ADJUSTMENT OF THE STRIPPER MAY BE REQUIRED WHEN MOVING THE APPLICATOR BETWEEN BENCH AND LEADMAKER APPLICATIONS.
- 6 APPLY PART NUMBER 1-23419-5 LOCTITE TO THREADS OF ITEMS 62 & 180. FOR -6 ONLY APPLY PART NUMBER 1-23419-5 LOCTITE TO THREADS OF ITEMS 37 & 180.
- 7 GREASE THREADS, GROOVE AND O-RING ON ITEMS 35 & 252.
- 8 MAGNET, ITEM 166 MUST BE ORIENTED CORRECTLY IN ORDER TO PROPERLY ACTUATE THE COUNTER.
- 9 CRIMP HEIGHT REFERENCE SETTING WAS THE SETTING USED WHEN THE APPLICATOR WAS QUALIFIED AT THE FACTORY. ADJUSTMENT MAY BE NECESSARY WHEN RUNNING APPLICATOR IN THE FIELD.
- 10 SPARE FEED CAM STORAGE LOCATION REFER TO INSTRUCTION SHEET FOR ADDITIONAL INFORMATION.
- 11 THE RECOMMENDED SET-UP FOR END FEED APPLICATORS IS POST-FEED WITH ITEM 2119653-1. THE APPLICATOR CAN BE CONFIGURED FOR PRE-FEED WITH ITEM 2119652-1 BUT MAY ENCOUNTER PROBLEMS WITH SOME APPLICATIONS. FEED ISSUES OR TERMINAL JAMMING MAY OCCUR IN THE PRE-FEED CONFIGURATION.
- 12 WHEN ASSEMBLING -6 NON-CRIMP HEIGHT ADJUST APPLICATOR USE SHIM PACK 2119957-2 TO ALIGN APPLICATOR'S MAXIMUM WIRE CRIMP HEIGHT AT NORMAL TERMINATOR SHUT HEIGHT
- 13 IF TERMINALS REQUIRE LUBRICATION, 2119955-2 LUBRICATOR ASSEMBLY IS NEEDED.

***WARNING**
ON INSTALLATION, SET WIRE DISC, ITEM 40 TO LARGEST WIRE SIZE SETTING. USE OF SETTINGS BELOW MINIMUM REQUIRED CRIMP HEIGHT SETTING WILL CAUSE DAMAGE TO CRIMP TOOLING.

-77	-7	-6	-5	-2	-1	PART NO	DESCRIPTION	ITEM NO
-	-	1	-	-	-	2119957-2	APPLICATOR SHIM PACK	260
-	1	-	1	1	1	8-21084-0	O-RING, .676 ID, .070 DIA. MAT.	252
-	-	-	-	1	-	2119640-1	PUSH ROD, AIR FEED	250

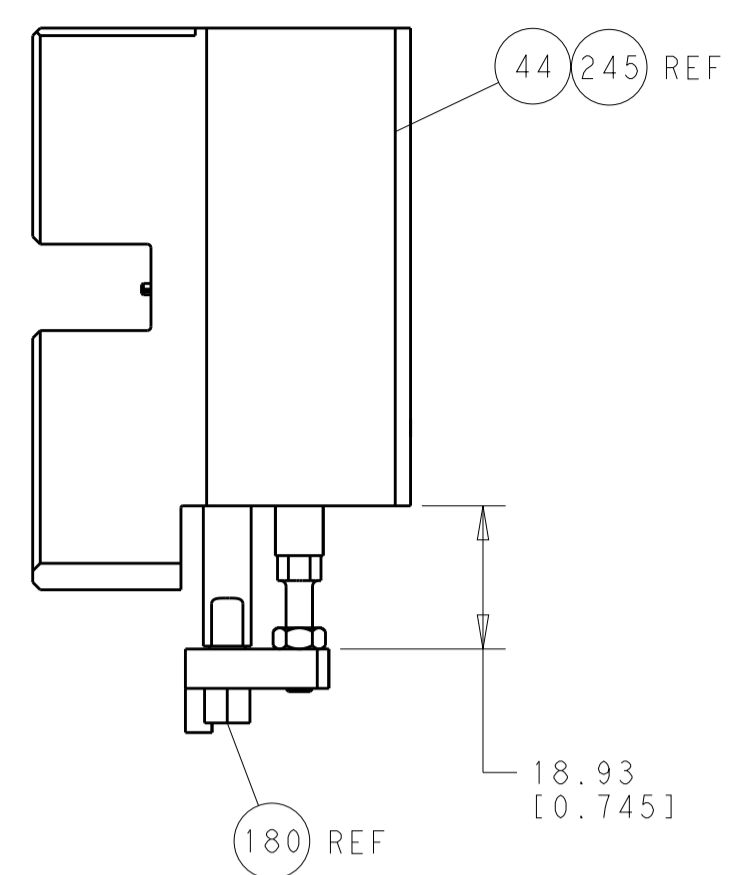
ATLANTIC VERSION
Shown on sheets 1 of 4 & 2 of 4
(Pacific version shown on sheets 3 of 4 & 4 of 4)

SET UP GAUGE	LOC	DIST	REVISIONS			
2119599-2	A	66	REV	DATE	BY	APPV
			1	12JAN2012	TE	TE
			A	07MAR2012	GH	TE
			B	27JUL2012	L.Z	S.X
			C	23SEP2013	X.Z	G.B

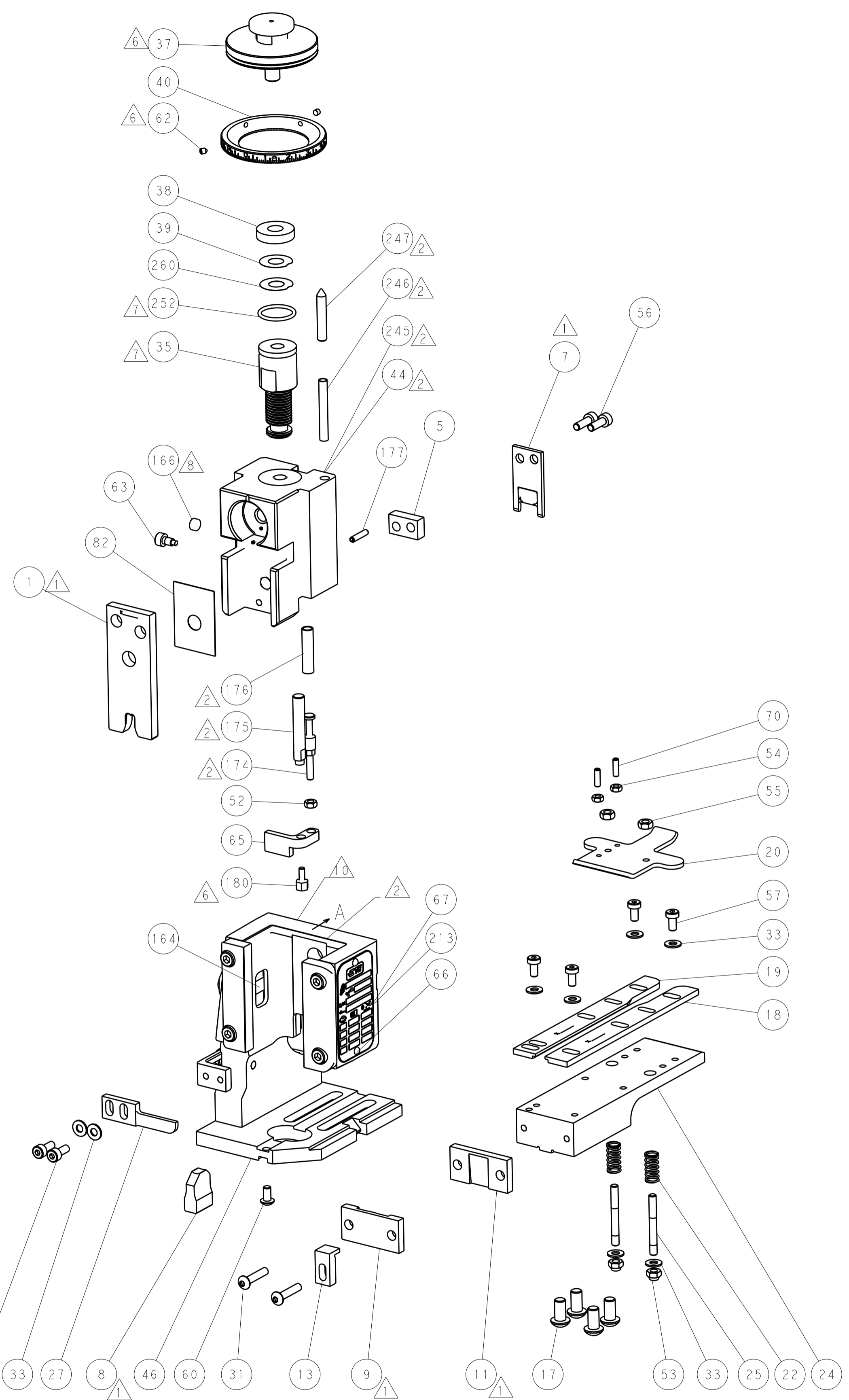
REV	DATE	BY	APPV	DESCRIPTION	ITEM NO		
-	-	-	-	1	2079988-1 BUSHING, LCH5-12, MISUMI	249	
-	-	-	-	1	2119641-1 FEED CAM, AIR FEED	248	
-	1	-	1	1	2119798-1 DETENT PIN	247	
-	1	-	1	1	1-22279-3 SPRING, COMPRESSION	246	
-	-	1	-	-	2119759-1 RAM, AMP STYLE, END FEED, NON-ADJUST	245	
-	-	2	2	-	2168400-7 SHCS, LOW HEAD, RoHS, M5 X 10	240	
-	-	-	-	1	2119580-1 MECHANICAL FEED ASSEMBLY	239	
-	-	-	-	1	2063440-1 AIR FEED MODULE	238	
-	-	1	1	-	2119740-2 TAG, IDENTIFICATION	213	
-	-	REF	REF	-	1901697-1 FEED FINGER ASSEMBLY, EF	183	
-	1	1	1	1	1752354-3 STANDOFF, HOLD-DOWN	180	
-	1	1	1	1	6-993111-6 PIN, SLOTTED SPRING 3.0 X 14.0	177	
-	1	1	1	1	8-22280-7 SPRING, COMPRESSION	176	
-	1	1	1	1	1752353-2 GUIDE PIN, HOLDDOWN	175	
-	1	1	1	1	1901680-2 GUIDE PIN, HOLDDOWN	174	
-	-	-	-	2	21045-3 RING, RETAIN, EXTERN, 3/16 CRESCENT	172	
-	1	1	1	1	994969-1 MAGNET, RARE EARTH HIGH ENERGY	166	
-	REF	REF	REF	REF	994970-2 COUNTER, MAGNETIC	164	
-	-	-	-	1	240638-1 SPRING, FEED FINGER	163	
-	-	-	-	1	3-23627-7 PIN, RETAIN, GRVD, 3/16 X .854	137	
-	-	REF	REF	-	SEE NOTE 4 MEMORY CHIP, PROGRAMMED	135	
-	-	1	1	-	1633743-1 SERVO FEED LATCH ASM	133	
-	1	1	1	1	455888-3 SPACER, CRIMPER	82	
-	1	1	1	1	2119956-2 DOCUMENTATION PACKAGE	71	
-	2	2	2	2	2-18032-2 SCR, SET, FLT POINT M3 X 10.0	70	
-	1	-	-	1	2119740-1 TAG, IDENTIFICATION	67	
-	2	2	2	2	2168078-1 SCREW, DRIVE, RH, RoHS, 2 x .188	66	
-	1	1	1	1	1901681-1 HOLDDOWN, TERMINAL	65	
-	1	-	1	1	2119793-1 LIMITER, ADJUSTMENT BOLT	63	
-	3	-	3	3	992763-5 SCR, SET, SOC, CONE POINT, M3 x 4.0	62	
-	1	1	1	1	2079383-4 SCR, BHSC, RoHS (M4 X 8)	60	
-	-	-	-	1	5-18022-5 SCR, HEX HD CAP, M4 X 6.0	59	
-	-	-	-	1	2063961-1 FEED FINGER	58	
-	4	4	4	4	2168400-4 SHCS, LOW HEAD, RoHS, M4 X 8	57	
-	2	2	2	2	2168083-3 SCR, SKT HD CAP, RoHS, M4 X 12.0	56	
-	2	2	2	2	5018030-2 NUT, HEX, REG, RoHS, M4	55	
-	2	2	2	2	5018030-1 NUT, HEX, REG, RoHS, M3	54	
-	2	2	2	2	986965-8 NUT, LOCK, HEX, TORQUE (M4)	53	
-	1	1	1	1	1-5018030-0 NUT, HEX, REG, RoHS, M3.5	52	
-	-	-	-	1	2119792-2 PAWL, EF, AIR	51	
-	-	-	-	1	2	18023-9 SCR, SKT HD CAP M4 X 6.0	49
-	-	-	-	1	2119652-1 FEED CAM, PRE FEED	48	
-	-	-	-	1	2119653-1 FEED CAM, POST FEED	47	
-	1	1	1	1	2119655-5 APPLICATOR BASIC ASSEMBLY, EF	46	
-	1	-	1	1	2119369-1 RAM, AMP STYLE, END FEED	44	
-	1	1	1	1	2079383-7 SCR, BHSC, RoHS (M8 X 25)	41	
-	1	-	1	1	2119645-1 DISC, NUMBERED FA WIRE ADJUSTMENT	40	
-	1	-	1	1	2119957-1 APPLICATOR SHIM PACK	39	
-	1	1	1	1	1-2119644-3 RAM WASHER, PRECISION	38	
-	1	1	1	1	2119085-1 FA HEAD, ATLANTIC STYLE	37	
-	1	-	1	1	2119092-1 BOLT, ADJUSTMENT	35	
-	8	8	8	8	1-18028-2 WASHER, FLAT, REG M4	33	
-	2	2	2	2	2079383-5 SCR, BHSC, RoHS (M4 X 20)	31	
-	2	2	2	2	1-2168083-0 SCR, SKT HD CAP, RoHS, M4 X 10	29	
-	1	1	1	1	240639-1 STRIPPER (MACHINING)	27	
-	2	2	2	2	1320906-1 STUD, THREADED	25	
-	1	1	1	1	1752371-5 PLATE, STRIP GUIDE	24	
-	2	2	2	2	2-22281-3 SPRING, COMPRESSION	22	
-	1	1	1	1	1752373-4 DRAG	20	
-	1	1	1	1	1-1901696-0 STRIP GUIDE, REAR	19	
-	1	1	1	1	1-1901695-0 STRIP GUIDE, FRONT	18	
-	4	4	4	4	1-2079383-1 SCR, BHSC, RoHS (M6 X 12)	17	
-	1	1	1	1	1752360-1 SPACER, HOLD-DOWN	13	
-	1	1	1	1	240644-1 PLATE, REAR SHEAR	11	
-	-	-	-	-	-	10	
-	1	1	1	1	690482-7 PLATE, FRONT SHEAR	9	
-	1	1	1	1	1803002-1 ANVIL, COMBINATION, END FEED	8	
-	1	1	1	1	1-2217206-6 BLADE, SLUG	7	
-	1	1	1	1	8-240641-8 SPACER	5	
-	-	-	-	-	-	4	
-	-	-	-	-	-	3	
-	-	-	-	-	-	2	
-	1	1	1	1	1	456430-2 CRIMPER, WIRE	1

DIMENSIONS: mm 	TOLERANCES UNLESS OTHERWISE SPECIFIED: 0 PLC ±.5 1 PLC ±.5 2 PLC ±.13 3 PLC ±.013 4 PLC ±.0001 ANGLES ±.1	DWG: HOFFNER 12JAN2012 CHK: T.ELBIN 13JAN2012 APVD: T.ELBIN 13JAN2012 PRODUCT SPEC APPLICATION SPEC WEIGHT CUSTOMER ACCESSIBLE PRODUCTION DRAWING	TE Connectivity Harrisburg, PA 17105-3608 Ocean End Feed Applicator SIZE: A1 CASE CODE: 00779 DRAWING NO: C=2150245 SCALE: 1:1 SHEET: 1 of 4 REV: C
-----------------------	---	---	--

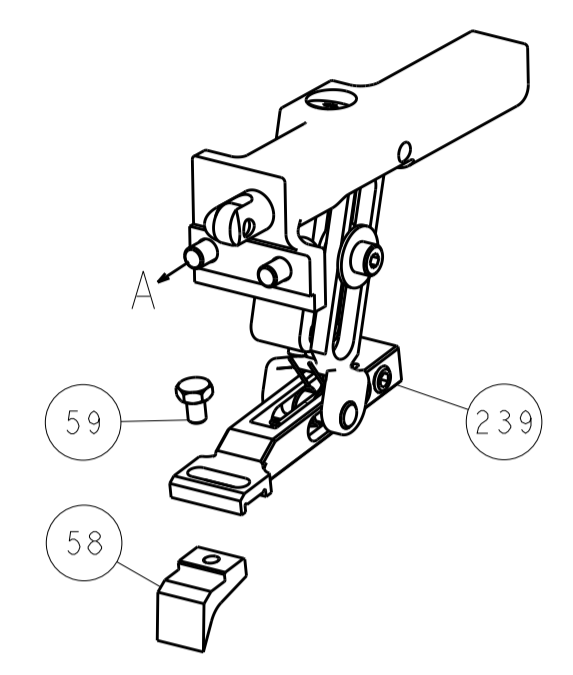
LOC	DIST	REV	DATE	BY	APPV
A	66				
REVISIONS			DESCRIPTION	DATE	BY
-			SEE SHEET 1	-	-



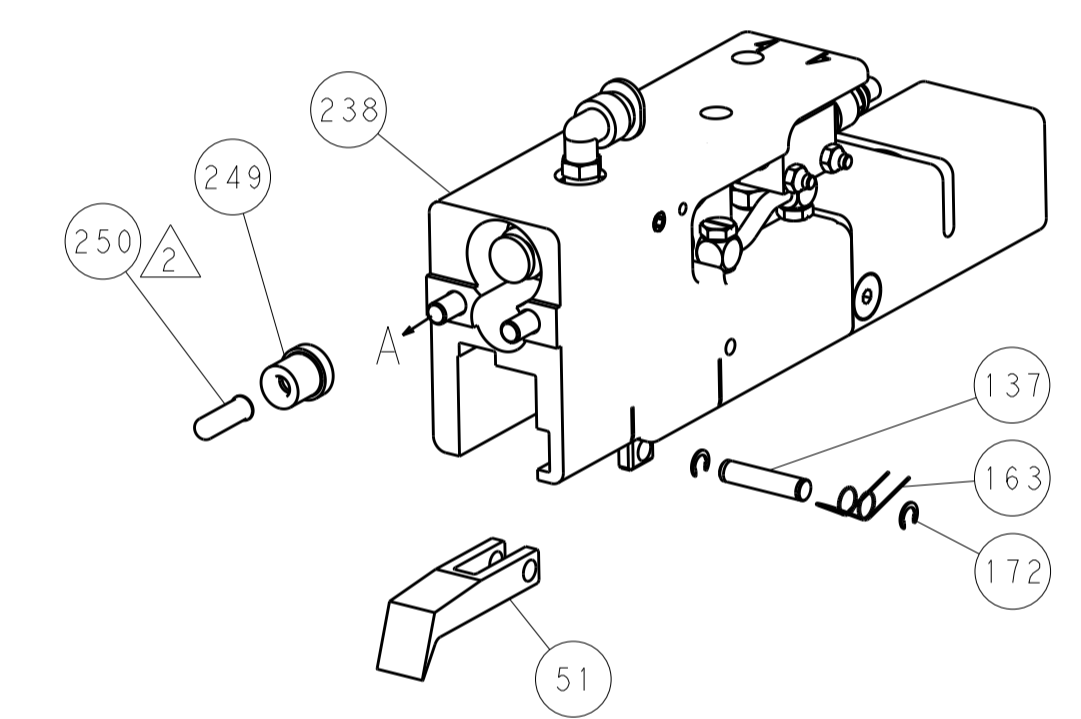
HOLDDOWN SET-UP



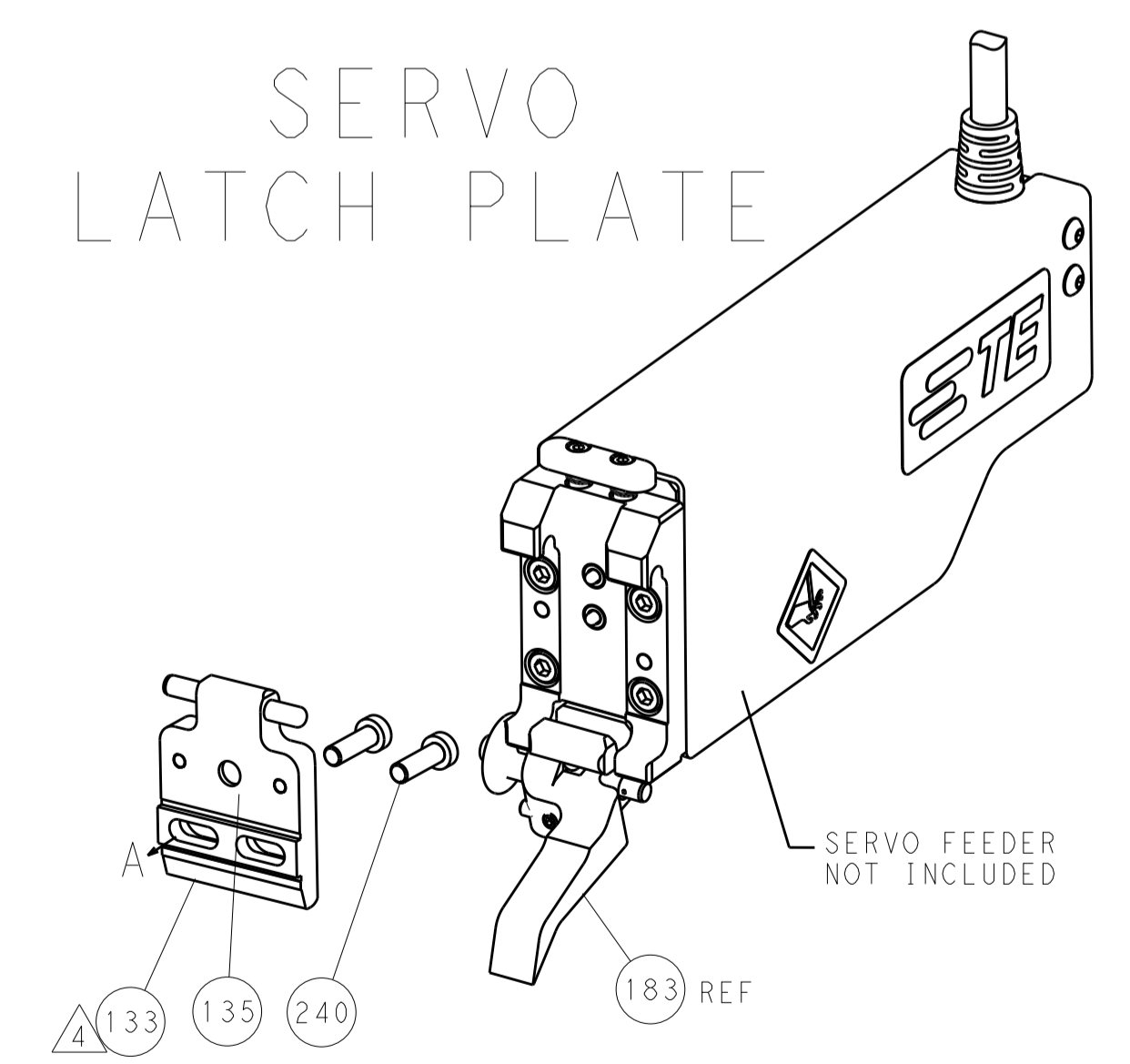
FEED TYPE
MECHANICAL



PNEUMATIC



SERVO
LATCH PLATE



CAM POSITIONS



ATLANTIC VERSION
 Shown on sheets 1 of 4 & 2 of 4
 (Pacific version shown on sheets 3 of 4 & 4 of 4)

DIMENSIONS:		TOLERANCES UNLESS OTHERWISE SPECIFIED:		DWG: HOFFNER 12JAN2012		TE Connectivity	
mm		0 PLC ±0.5		CHK: T. ELBIN 13JAN2012		Harrisburg, PA 17105-3608	
Ø		1 PLC ±0.13		APPV: T. ELBIN 13JAN2012		NAME: Ocean End Feed Applicator	
H		3 PLC ±0.013		PRODUCT SPEC		SIZE: CAGE CODE DRAWING NO	
A		4 PLC ±0.0001		APPLICATION SPEC		RESTRICTED TO	
ANGLES		FINISH		WEIGHT		A1 00779 C=2150245	
MATERIAL		CUSTOMER ACCESSIBLE PRODUCTION DRAWING		SCALE: 1:1		SHEET 2 OF 4 REV C	

THIS DRAWING IS UNPUBLISHED. RELEASED FOR PUBLICATION
 BY TYCO ELECTRONICS CORPORATION. ALL RIGHTS RESERVED.

PACIFIC VERSION TERMINATOR INTERFACE ADAPTER	PART NUMBER	REVISION	DESCRIPTION	FEED TYPE	APPLICATOR STYLE CONVERSION CHART						
					CONVERT TO	PART NUMBERS REQUIRED					
	2-2150245-1	C	FINE CRIMP HEIGHT ADJUST	MECHANICAL	PNEUMATIC FEED	2119950-1	2119792-1	-	2119641-2	-	2063440-1
					SERVO LATCH PLATE	2119951-1	1901697-1	8-2150245-5	-	-	2168400-7 (QUANTITY 2)
					SMART APPLICATOR	2161326-1	-	8-2150245-4	-	-	-
	2-2150245-2	C	FINE CRIMP HEIGHT ADJUST	PNEUMATIC	MECHANICAL FEED	2119949-1	2063961-1	5-18022-5	2119653-2	-	-
					SERVO LATCH PLATE	2119951-1	1901697-1	8-2150245-5	-	-	2168400-7 (QUANTITY 2)
					SMART APPLICATOR	2161326-1	-	8-2150245-4	-	-	-
	2-2150245-5	C	FINE CRIMP HEIGHT ADJUST	SERVO LATCH PLATE	MECHANICAL FEED	2119949-1	2063961-1	5-18022-5	2119653-2	-	-
					PNEUMATIC FEED	2119950-1	2119792-1	-	2119641-2	-	2063440-1
	2-2150245-7	C	FINE CRIMP HEIGHT ADJUST	NONE	-	-	-	-	-	-	-
	7-2150245-7	A	CRIMP TOOLING KIT	-	-	-	-	-	-	-	-

APPLICATOR DATA		
CRIMP	SIZE	TYPE
WIRE	5.33 mm [.210]	F
INSUL	1.00 mm [.039]	-
APPLICATOR INSTRUCTIONS 408-10390		

TERMINAL DATA: TE TERMINAL		TE CRIMP SPECIFICATION
TERMINAL NAME: TERMINAL, RING		
WIRE STRIP LENGTH 5.54-6.30 mm [.218-.248 IN]		INSULATION DIAMETER RANGE Ø 0.0 mm [.000-.000 IN]
TERMINAL APPLICATION SPECIFICATION 114-2084	-	-
TERMINALS APPLIED		
TE TERMINAL 40523	TE TERMINAL 40524	TE TERMINAL 41090
		TE TERMINAL 41911

WIRE SIZE	CRIMP HEIGHT mm [INCH]	CRIMP HEIGHT REFERENCE SETTING
10 AWG	3.43 +/- 0.05 [.135 +/- .002]	3.0
12 AWG	3.12 +/- 0.05 [.123 +/- .002]	6.6
14 AWG	2.74 +/- 0.05 [.108 +/- .002]	11.0

- RECOMMENDED SPARE PARTS
- GREASE BEARING SURFACES LIGHTLY
- 3. LUBRICATE DAILY PER THE APPLICATOR INSTRUCTION SHEET SUPPLIED WITH THE APPLICATOR.
- APPLICATOR SPECIFIC DATA TO BE ENTERED INTO BLANK MEMORY CHIP AT ASSEMBLY. SEE BELOW FOR PART NUMBER:
 MECHANICAL FEED WITH "SMART APPLICATOR" CONVERSION: 8-2150245-4
 PNEUMATIC FEED WITH "SMART APPLICATOR" CONVERSION: 8-2150245-4
 SERVO FEED WITH "FINE CRIMP HEIGHT ADJUST": 8-2150245-5
- 5. ADJUSTMENT OF THE STRIPPER MAY BE REQUIRED WHEN MOVING THE APPLICATOR BETWEEN BENCH AND LEADMAKER APPLICATIONS.
- APPLY PART NUMBER 1-23419-5 LOCTITE TO THREADS OF ITEMS 62 & 180.
- GREASE THREADS, GROOVE AND O-RING ON ITEMS 139 & 153.
- MAGNET, ITEM 166 MUST BE ORIENTED CORRECTLY IN ORDER TO PROPERLY ACTUATE THE COUNTER.
- CRIMP HEIGHT REFERENCE SETTING WAS THE SETTING USED WHEN THE APPLICATOR WAS QUALIFIED AT THE FACTORY. ADJUSTMENT MAY BE NECESSARY WHEN RUNNING APPLICATOR IN THE FIELD.
- SPARE FEED CAM STORAGE LOCATION REFER TO INSTRUCTION SHEET FOR ADDITIONAL INFORMATION.
- THE RECOMMENDED SET-UP FOR END FEED APPLICATORS IS POST-FEED WITH ITEM 2119653-1. THE APPLICATOR CAN BE CONFIGURED FOR PRE-FEED WITH ITEM 2119652-1 BUT MAY ENCOUNTER PROBLEMS WITH SOME APPLICATIONS. FEED ISSUES OR TERMINAL JAMMING MAY OCCUR IN THE PRE-FEED CONFIGURATION.
- IF TERMINALS REQUIRE LUBRICATION, 2119955-2 LUBRICATOR ASSEMBLY IS NEEDED.

-	1	1	1	1	1	2119782-1	FINE ADJUST HEAD ASM, PACIFIC STYLE	251
-77-27-25-22-21						PART NO	DESCRIPTION	ITEM NO

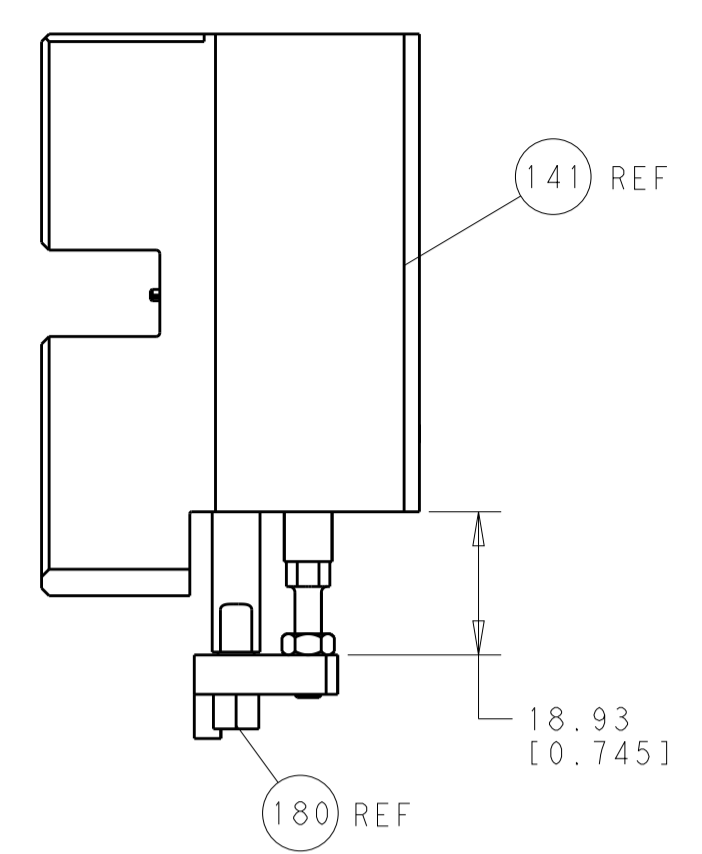
PACIFIC VERSION
 Shown on sheets 3 of 4 & 4 of 4
 (Atlantic version shown on sheets 1 of 4 & 2 of 4)

SET UP GAUGE	LOC	DIST	REVISIONS			
2119599-2	A	66	REV	DATE	BY	APPV
-	-	-	1			
			DESCRIPTION			
			SEE SHEET 1			

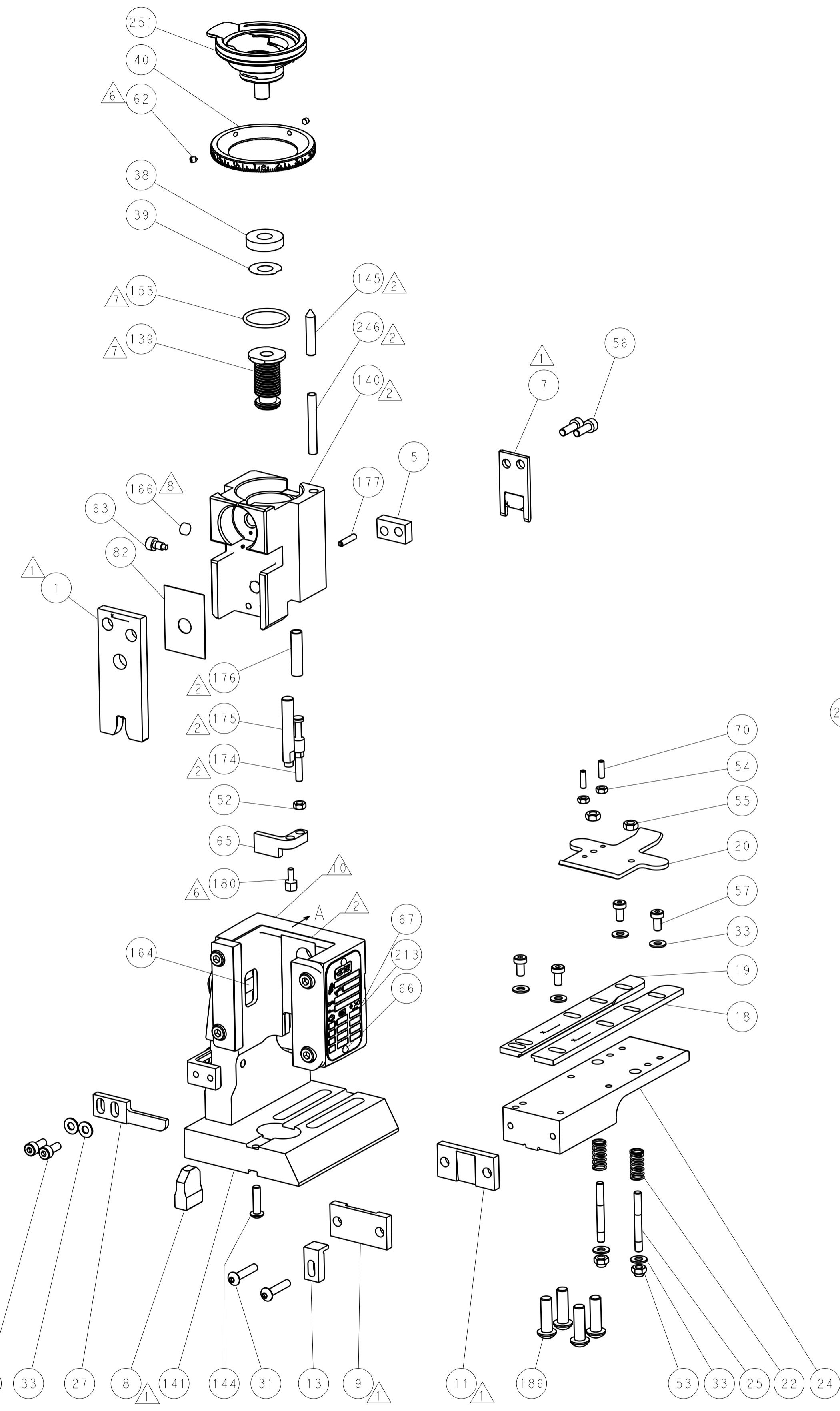
-	-	-	1	-	2119640-1	PUSH ROD, AIR FEED	250
-	-	-	1	-	2079988-1	BUSHING, LCH5-12, MISUMI	249
-	1	1	1	1	1-22279-3	SPRING, COMPRESSION	246
-	-	2	-	-	2168400-7	SHCS, LOW HEAD, RoHS, M5 X 10	240
-	-	-	-	1	2119580-1	MECHANICAL FEED ASSEMBLY	239
-	-	-	-	1	2063440-1	AIR FEED MODULE	238
-	-	1	-	-	2119740-2	TAG, IDENTIFICATION	213
-	4	4	4	4	2079383-9	SCR, BHSC, RoHS (M6 X 20)	186
-	-	REF	-	-	1901697-1	FEED FINGER ASSEMBLY, EF	183
-	1	1	1	1	1752354-3	STANDOFF, HOLD-DOWN	180
-	1	1	1	1	6-993111-6	PIN, SLOTTED SPRING 3.0 X 14.0	177
-	1	1	1	1	8-22280-7	SPRING, COMPRESSION	176
-	1	1	1	1	1752353-2	GUIDE PIN, HOLDDOWN	175
-	1	1	1	1	1901680-2	GUIDE PIN, HOLDDOWN	174
-	-	-	2	-	21045-3	RING, RETAIN, EXTERN, 3/16 CRESCENT	172
-	-	-	1	1	994969-1	MAGNET, RARE EARTH HIGH ENERGY	166
-	REF	REF	REF	REF	994970-2	COUNTER, MAGNETIC	164
-	-	-	1	-	240638-1	SPRING, FEED FINGER	163
-	1	1	1	1	8-21084-1	O-RING, .801 ID, .070 DIA. MAT.	153
-	-	-	1	-	2119641-2	FEED CAM, AIR FEED	152
-	1	1	1	1	2119798-2	DETENT PIN	145
-	1	1	1	1	2079383-8	SCR, BHSC, RoHS (M4 X 16)	144
-	-	-	-	1	2119653-2	FEED CAM, POST FEED	142
-	1	1	1	1	2119655-6	APPLICATOR BASIC ASSEMBLY, EF	141
-	1	1	1	1	2119651-1	RAM, ASIAN STYLE, END FEED	140
-	1	1	1	1	2119092-2	BOLT, ADJUSTMENT	139
-	-	-	1	-	3-23627-7	PIN, RETAIN, GRVD, 3/16 X .854	137
-	-	REF	-	-	SEE NOTE 4	MEMORY CHIP, PROGRAMMED	135
-	-	1	-	-	1633743-1	SERVO FEED LATCH ASM	133
-	1	1	1	1	455888-3	SPACER, CRIMPER	82
-	1	1	1	1	2119956-2	DOCUMENTATION PACKAGE	71
-	2	2	2	2	2-18032-2	SCR, SET, FLT POINT M3 X 10.0	70
-	1	-	1	1	2119740-1	TAG, IDENTIFICATION	67
-	2	2	2	2	2168078-1	SCREW, DRIVE, RH, RoHS, 2 x .188	66
-	1	1	1	1	1901681-1	HOLDDOWN, TERMINAL	65
-	1	1	1	1	2119793-1	LIMITER, ADJUSTMENT BOLT	63
-	3	3	3	3	992763-5	SCR, SET, SOC, CONE POINT, M3 x 4.0	62
-	-	-	-	1	5-18022-5	SCR, HEX HD CAP, M4 X 6.0	59
-	-	-	-	1	2063961-1	FEED FINGER	58
-	4	4	4	4	2168400-4	SHCS, LOW HEAD, RoHS, M4 X 8	57
-	2	2	2	2	2168083-3	SCR, SKT HD CAP, RoHS, M4 X 12.0	56
-	2	2	2	2	5018030-2	NUT, HEX, REG, RoHS, M4	55
-	2	2	2	2	5018030-1	NUT, HEX, REG, RoHS, M3	54
-	2	2	2	2	986965-8	NUT, LOCK, HEX, TORQUE (M4)	53
-	1	1	1	1	1-5018030-0	NUT, HEX, REG, RoHS, M3.5	52
-	-	-	1	-	2119792-2	PAWL, EF, AIR	51
-	-	-	1	2	18023-9	SCR, SKT HD CAP M4 X 6.0	49
-	-	-	-	1	2119652-1	FEED CAM, PRE FEED	48
-	1	1	1	1	2079383-7	SCR, BHSC, RoHS (M8 X 25)	41
-	1	1	1	1	2119645-1	DISC, NUMBERED FA WIRE ADJUSTMENT	40
-	1	1	1	1	2119957-1	APPLICATOR SHIM PACK	39
-	1	1	1	1	1-2119644-3	RAM WASHER, PRECISION	38
-	8	8	8	8	1-18028-2	WASHER, FLAT, REG M4	33
-	2	2	2	2	2079383-5	SCR, BHSC, RoHS (M4 X 20)	31
-	2	2	2	2	1-2168083-0	SCR, SKT HD CAP, RoHS, M4 X 10	29
-	1	1	1	1	240639-1	STRIPPER (MACHINING)	27
-	2	2	2	2	1320906-1	STUD, THREADED	25
-	1	1	1	1	1752371-5	PLATE, STRIP GUIDE	24
-	2	2	2	2	2-22281-3	SPRING, COMPRESSION	22
-	1	1	1	1	1752373-4	DRAG	20
-	1	1	1	1	1-1901696-0	STRIP GUIDE, REAR	19
-	1	1	1	1	1-1901695-0	STRIP GUIDE, FRONT	18
-	1	1	1	1	1752360-1	SPACER, HOLD-DOWN	13
-	1	1	1	1	240644-1	PLATE, REAR SHEAR	11
-	-	-	-	-	-	-	10
-	1	1	1	1	690482-7	PLATE, FRONT SHEAR	9
-	1	1	1	1	1803002-1	ANVIL, COMBINATION, END FEED	8
-	1	1	1	1	1-2217206-6	BLADE, SLUG	7
-	1	1	1	1	8-240641-8	SPACER	5
-	-	-	-	-	-	-	4
-	-	-	-	-	-	-	3
-	-	-	-	-	-	-	2
-	1	1	1	1	456430-2	CRIMPER, WIRE	1

DIMENSIONS:		TOLERANCES UNLESS OTHERWISE SPECIFIED:		DATE	BY	APPV	NAME
mm	0 PLC ±.5	1 PLC ±.5	2 PLC ±.13	12JAN2012	HOFFNER	T. ELBIN	TE Connectivity
	3 PLC ±.013	4 PLC ±.001	ANGLES ±.0001	13JAN2012	T. ELBIN	T. ELBIN	Harrisburg, PA 17105-3608
MATERIAL:	FINISH:	WEIGHT:	SCALE:	Ocean End Feed Applicator			
			1:1	A1 00779 ©=2150245			
CUSTOMER ACCESSIBLE PRODUCTION DRAWING			SHEET 3 OF 4	REV C			

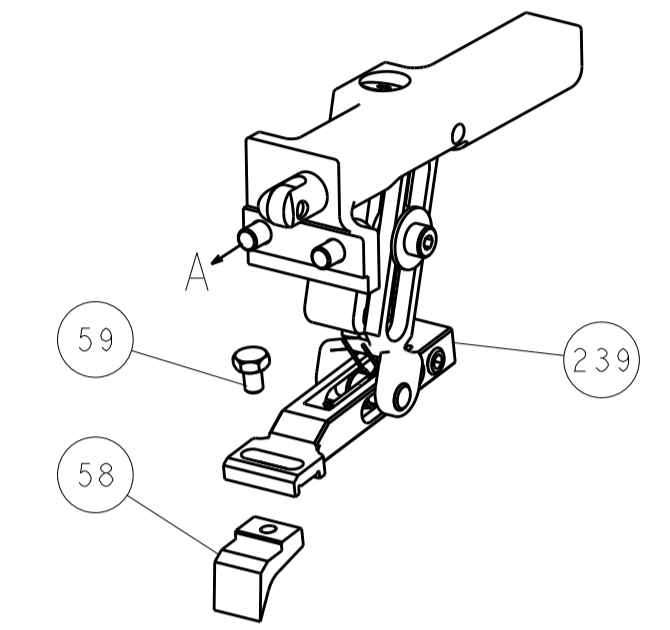
LOC		DIST		REVISIONS			
A	66	P	LTM	DESCRIPTION	DATE	OWN	APVD
		-	-	SEE SHEET 1	-	-	-



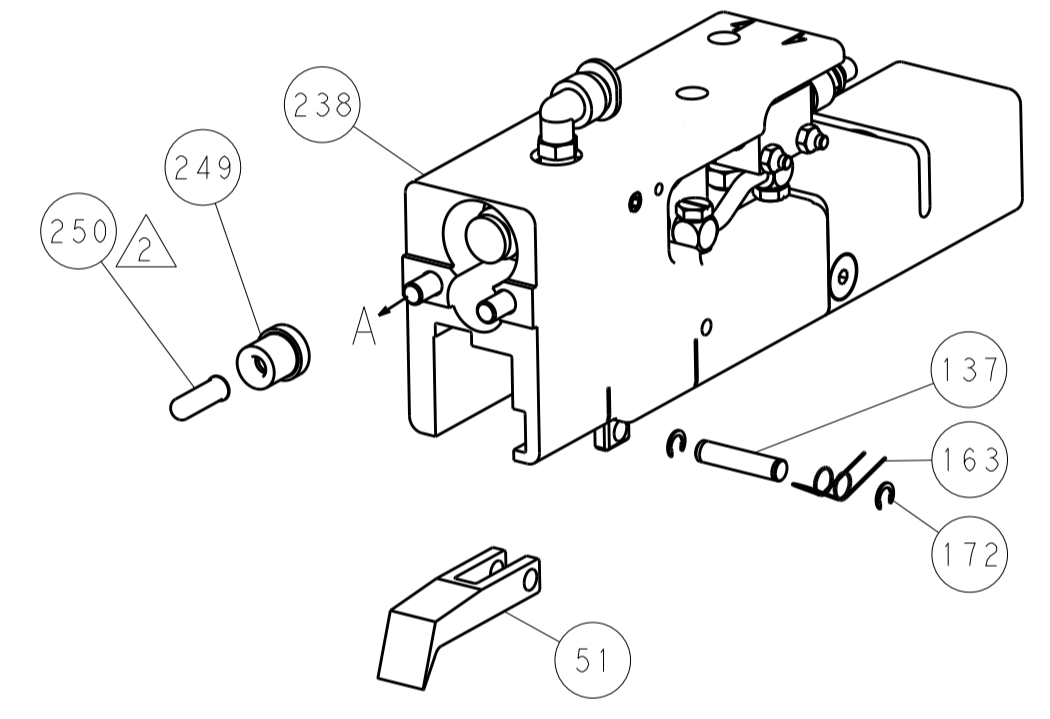
HOLDDOWN SET-UP



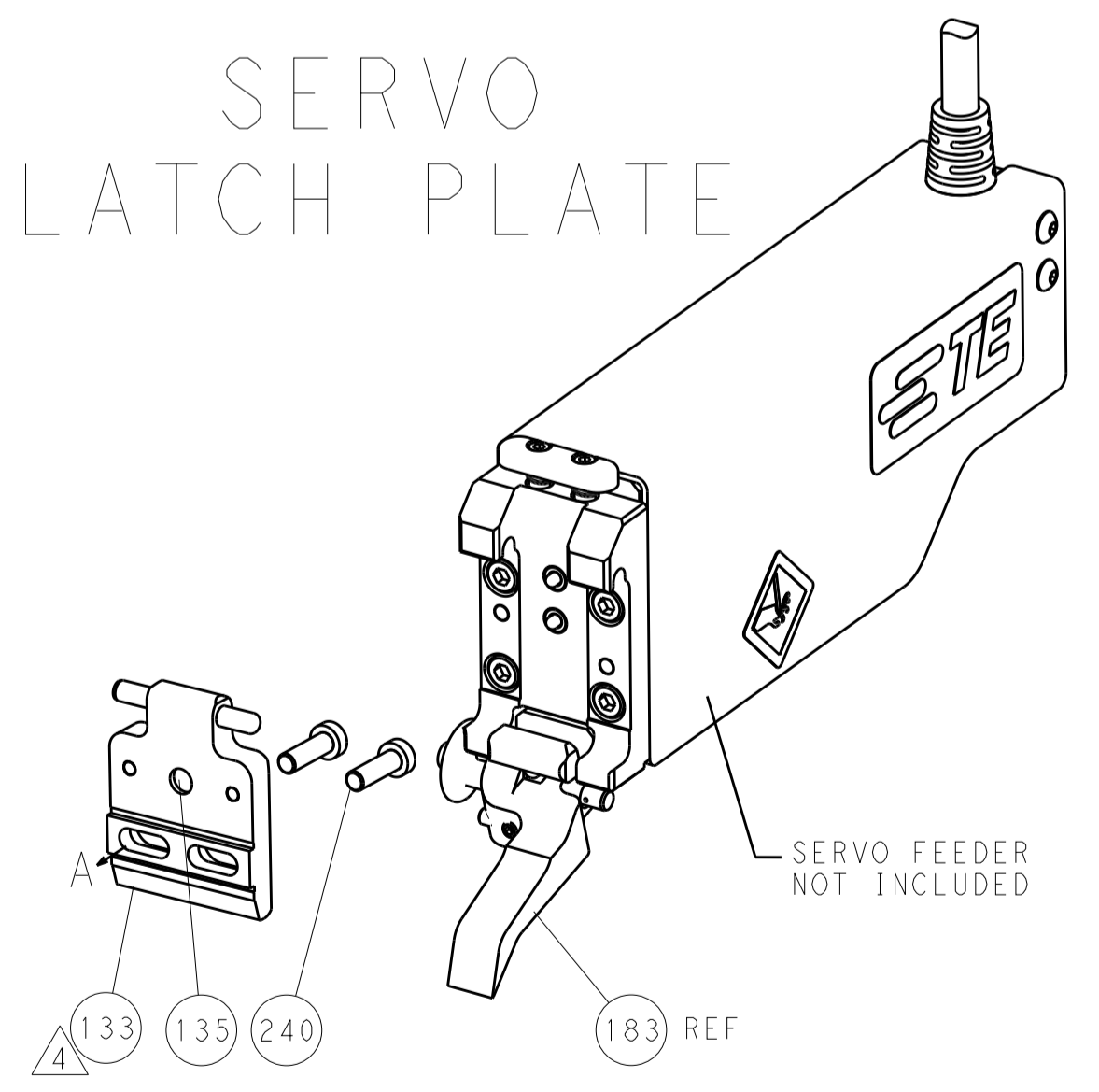
FEED TYPE
MECHANICAL



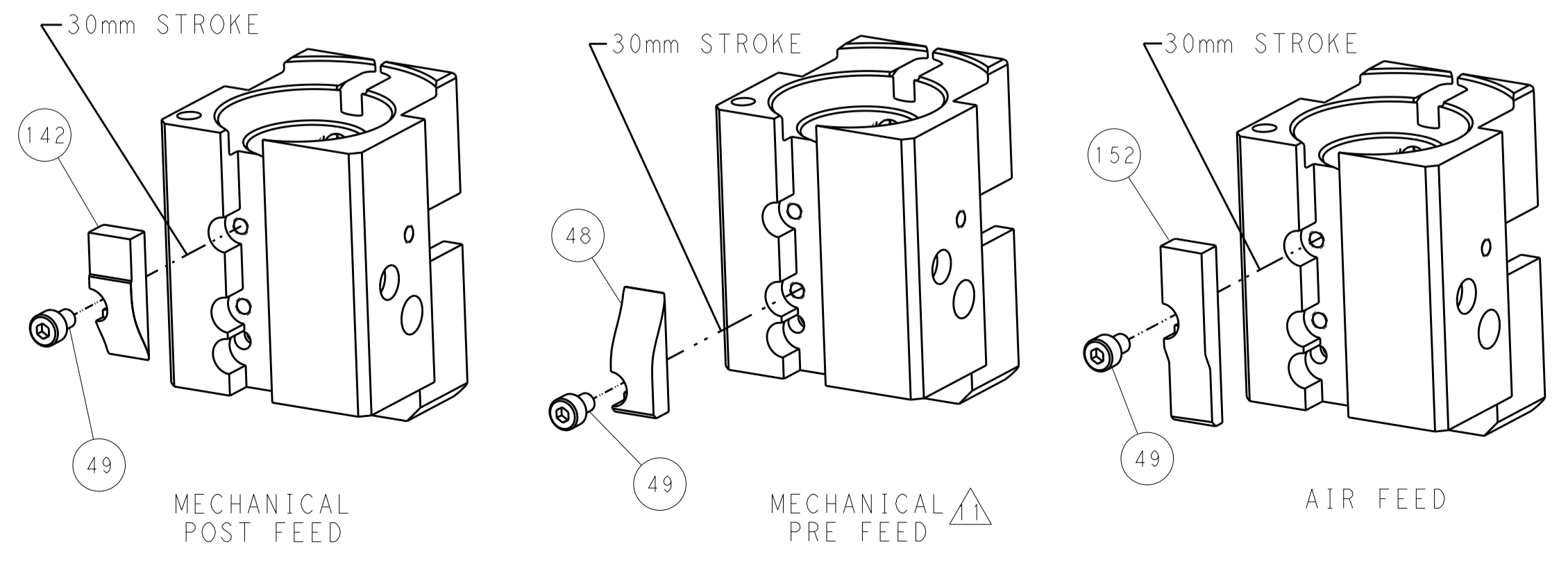
PNEUMATIC



SERVO
LATCH PLATE



CAM POSITIONS



PACIFIC VERSION
 Shown on sheets 3 of 4 & 4 of 4
 (Atlantic version shown on sheets 1 of 4 & 2 of 4)

DIMENSIONS:		TOLERANCES UNLESS OTHERWISE SPECIFIED:		DWN: HOFFNER 12JAN2012		TE Connectivity	
mm		0 PLC ±0.5		CHK: T. ELBIN 13JAN2012		Harrisburg, PA 17105-3608	
HOLE		1 PLC ±0.13		APVD: T. ELBIN 13JAN2012		NAME: Ocean End Feed Applicator	
MATERIAL:		2 PLC ±0.013		PRODUCT SPEC:		SIZE: CAGE CODE DRAWING NO: A11 00779 C=2150245	
		3 PLC ±0.013		APPLICATION SPEC:		RESTRICTED TO:	
		4 PLC ±0.0001		WEIGHT:		SCALE: 1:1 SHEET 4 OF 4 REV C	
		ANGLES ±0.0001		CUSTOMER ACCESSIBLE PRODUCTION DRAWING		SHEETS 1 & 2 ARE NOT REQUIRED FOR PACIFIC VERSION	