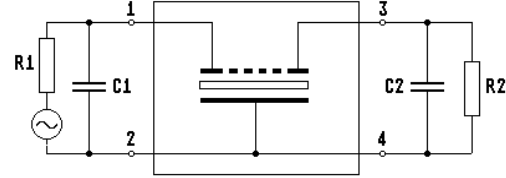
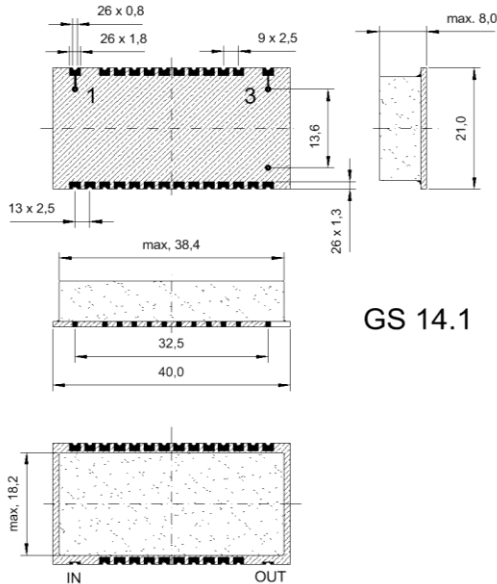


Specification for monolithic crystal filter:

MQF 35.25-2600/06V1

1. General

1.1. Package:



Please note:

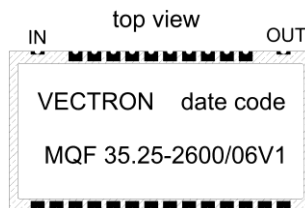
- package is not suitable for reflow soldering
- filters are 2002 / 95 / EC RoHS compliant

- | | |
|-----------------------------------|---------------------|
| 1.2. Type name: | MQF 35.25-2600/06V1 |
| 1.3. Number of poles: | 10 |
| 1.4. Operating temperature range: | -20°C to +70°C |
| 1.5. Storage temperature range: | -45°C to +85°C |

2. Electric values

- | | |
|---|--------------------------|
| 2.1. Nominal centre frequency fo: | 35.25 MHz |
| 2.2. Pass band | |
| 2.2.1. Centre frequency fc: | 35.25 MHz ± 1.5 kHz |
| 2.2.2. Bandwidth between 6 dB - frequencies: | ≥ fc ± 13 kHz |
| 2.2.3. Ripple: | ≤ 1.0 dB at fc ± 8.0 kHz |
| 2.2.4. Insertion loss: | ≤ 5.0 dB |
| (measured on smallest attenuation in pass band) | |
| 2.3. Stop band | |
| 2.3.1. fc ± 25 kHz.....± 5 MHz | ≥ 80 dB |
| 2.3.2. Alternate attenuation: | ≥ 80 dB |
| 2.4. Terminating impedance (input and output): | 50 Ω // 0 pF |

3. Marking:



- | | |
|----------------------------|---|
| 4. Environment conditions: | Corresponding to Vectron standard CF001 |
|----------------------------|---|

Edited by: _____ date: _____ name: _____