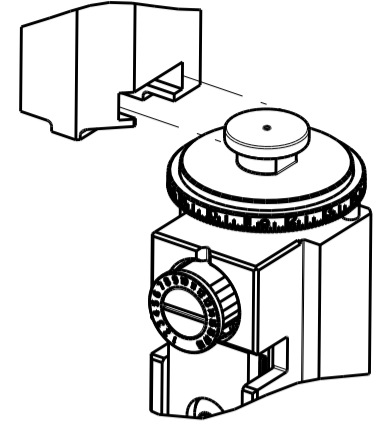


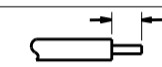


THIS DRAWING IS UNPUBLISHED. RELEASED FOR PUBLICATION. BY TYCO ELECTRONICS CORPORATION, ALL RIGHTS RESERVED.

ATLANTIC VERSION TERMINATOR INTERFACE ADAPTER	PART NUMBER	REVISION	DESCRIPTION	FEED TYPE
	2151258-1	B	FINE CRIMP HEIGHT ADJUST	MECHANICAL
	2151258-2	B	FINE CRIMP HEIGHT ADJUST	PNEUMATIC
	2151258-5	B	FINE CRIMP HEIGHT ADJUST	SERVO LATCH PLATE 4
	2151258-6	B	NON-CRIMP HEIGHT ADJUST	SERVO LATCH PLATE 4 12
	2151258-7	B	FINE CRIMP HEIGHT ADJUST	NONE
	7-2151258-7	A	CRIMP TOOLING KIT	-

APPLICATOR STYLE CONVERSION CHART									
CONVERT TO	PART NUMBERS REQUIRED								
PNEUMATIC FEED	2119950-1	1338685-1	5-18022-5	2119641-1	2119799-1	2063440-1			
SERVO LATCH PLATE	2119951-1	-	8-2151258-5	1901094-3	-	2168400-6 (QUANTITY 2)			
SMART APPLICATOR	2161326-1	-	8-2151258-4	-	-	-			
MECHANICAL FEED	2119949-1	1338685-1	5-18022-5	2119653-1	-	-			
SERVO LATCH PLATE	2119951-1	-	8-2151258-5	1901094-3	-	2168400-6 (QUANTITY 2)			
SMART APPLICATOR	2161326-1	-	8-2151258-4	-	-	-			
MECHANICAL FEED	2119949-1	1338685-1	5-18022-5	2119653-1	-	-			
PNEUMATIC FEED	2119950-1	1338685-1	5-18022-5	2119641-1	2119799-1	2063440-1			

APPLICATOR DATA		
CRIMP	SIZE	TYPE
WIRE	3.30 mm [.130]	F
INSUL	6.60 mm [.260]	O

APPLICATOR INSTRUCTIONS 408-10389

TERMINAL DATA: TE TERMINAL		TE CRIMP SPECIFICATION	
TERMINAL NAME: STANDARD POWER TIMER TYP A			
WIRE STRIP LENGTH		INSULATION DIAMETER RANGE	
5.00-5.60 mm [.197-.220 IN]		Ø 6.0mm [.236 IN] MAX	
TERMINAL APPLICATION SPECIFICATION	114-18037		

TERMINALS APPLIED			
TE TERMINAL	TE SEAL	TE SEAL	TE SEAL
928966-1	2-928966-2	1394512-1	
928966-2	1-964334-1	963245-1	
928966-7	1-964334-5		
1-928966-2	968037-2		
1-928966-3	1-968037-4		
2-928966-1	2-968037-4		

WIRE SIZE	CRIMP HEIGHT mm [INCH]	CRIMP HEIGHT REFERENCE SETTING
4.00mm2	2.35+/-0.05 [.093+/-0.002]	4.4

- RECOMMENDED SPARE PARTS
- GREASE BEARING SURFACES LIGHTLY
- LUBRICATE DAILY PER THE APPLICATOR INSTRUCTION SHEET SUPPLIED WITH THE APPLICATOR.
- APPLICATOR SPECIFIC DATA TO BE ENTERED INTO BLANK MEMORY CHIP AT ASSEMBLY. SEE BELOW FOR PART NUMBER:
MECHANICAL FEED WITH "SMART APPLICATOR" CONVERSION: 8-2151258-4
PNEUMATIC FEED WITH "SMART APPLICATOR" CONVERSION: 8-2151258-4
SERVO FEED WITH "FINE CRIMP HEIGHT ADJUST": 8-2151258-5
SERVO FEED WITH "NON-CRIMP HEIGHT ADJUST": 8-2151258-6
- ADJUSTMENT OF THE STRIPPER MAY BE REQUIRED WHEN MOVING THE APPLICATOR BETWEEN BENCH AND LEADMAKER APPLICATIONS.
- APPLY PART NUMBER 1-23419-5 LOCTITE TO THREADS OF ITEMS 50 & 62. APPLY PART NUMBER 2-23419-6 LOCTITE TO THREADS OF ITEMS 242. FOR -6 ONLY APPLY PART NUMBER 1-23419-5 LOCTITE TO THREADS OF ITEM 37 & 50.
- GREASE THREADS, GROOVE AND O-RING ON ITEMS 35 & 252.
- MAGNET, ITEM 166 MUST BE ORIENTED CORRECTLY IN ORDER TO PROPERLY ACTUATE THE COUNTER.
- CRIMP HEIGHT REFERENCE SETTING WAS THE SETTING USED WHEN THE APPLICATOR WAS QUALIFIED AT THE FACTORY. ADJUSTMENT MAY BE NECESSARY WHEN RUNNING APPLICATOR IN THE FIELD.
- SPARE FEED CAM STORAGE LOCATION REFER TO INSTRUCTION SHEET FOR ADDITIONAL INFORMATION.
- TO CONVERT THE APPLICATOR TO A NON-CARRIER CUTTING STYLE, REMOVE ITEM 13 AND ATTACH TO THE LOCATION ON THE BACK SIDE OF THE HOUSING. REFER TO INSTRUCTION SHEET FOR ADDITIONAL INFORMATION.
- WHEN ASSEMBLING -6 NON-CRIMP HEIGHT ADJUST APPLICATOR USE SHIM PACK 2119957-2 TO ALIGN APPLICATOR'S MAXIMUM WIRE CRIMP HEIGHT AT NORMAL TERMINATOR SHUT HEIGHT
- THIS APPLICATOR APPLIES TERMINAL WITH A SEAL. INSULATION RANGE QUOTED IS THAT OF THE TERMINAL. THE SEAL INSULATION RANGE IS Ø3.4- 3.7 [.134 - .146 IN.]
- APPLY TORO-SEAL IN ALLEN SOCKET TO FILL HOLE AFTER FLAT HD HAS BEEN ADJUSTED TO CORRECT HEIGHT AT QUALIFICATION. APPLY #1-23419-5 LOC-TITE TO THREADS.
- ACCORDING INSULATION Ø IS TO CHOOSE THE SINGLE WIRE SEAL ATTENTION; DIFFERENT HOUSING CAVITY DIAMETER ARE POSSIBLE. PLEASE NOTICE APPROPRIATE HOUSING PRODUCT SPECIFICATION!

*WARNING
ON INSTALLATION, SET WIRE DISC, ITEM 40 TO LARGEST WIRE SIZE SETTING. USE OF SETTINGS BELOW MINIMUM REQUIRED CRIMP HEIGHT SETTING WILL CAUSE DAMAGE TO CRIMP TOOLING.

-	-	1	-	-	-	2119957-2	APPLICATOR SHIM PACK				260
-	1	-	1	1	1	8-21084-0	O-RING, .676 ID, .070 DIA. MAT.				252
-	-	-	-	1	-	2119640-1	PUSH ROD, AIR FEED				250
-	-	-	-	1	-	2079988-1	BUSHING, LCH5-12, MISUMI				249
-	-	-	-	1	-	2119641-1	FEED CAM, AIR FEED				248
-	1	-	1	1	1	2119798-1	DETENT PIN				247
-	1	-	1	1	1	1-22279-3	SPRING, COMPRESSION				246
-	-	1	-	-	-	2119758-1	RAM, AMP STYLE, SIDE FEED, NON-ADJ.				245
-	1	1	1	1	1	2119082-9	CAM, SNAIL, INSULATION ADJUSTMENT				244
-	1	1	1	1	1	2079764-1	WASHER, WAVE SPRING, CREST-TO-CREST				243
-	1	1	1	1	1	2119083-1	RETAINER, INSULATION DIAL				242
-	1	1	1	1	1	7-18023-7	SCR, SKT HD CAP M3 X 4.0				241
-	-	2	2	-	-	2168400-6	SHCS, LOW HEAD, RoHS, M5 X 16				240
-	-	-	-	-	1	2119580-1	MECHANICAL FEED ASSEMBLY				239
-	-	-	-	-	1	2063440-1	AIR FEED MODULE				238
-77	-7	-6	-5	-2	-1	PART NO	DESCRIPTION				ITEM NO

ATLANTIC VERSION
Shown on sheets 1 of 4 & 2 of 4
(Pacific version shown on sheets 3 of 4 & 4 of 4)

SET UP GAUGE	LOC	DIST	REVISIONS					
2119599-1	A	66	P	LTN	DESCRIPTION	DATE	OWN	APPD
	A			RELEASED		07SEP2012	KH	SX
	A1			ECR-13-010674		10JUL2013	YY	UG
	A2			ECR-13-019476		13DEC2013	XZ	TE
	B			ECR-16-009666		05JUL2016	MZ	KZ

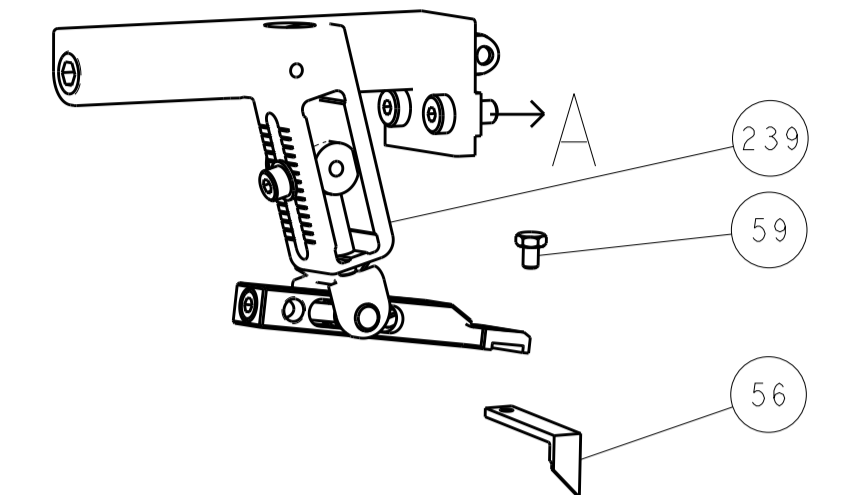
-	-	1	1	-	-	2119740-2	TAG, IDENTIFICATION				213
-	-	1	1	-	-	1901094-3	SPACER, FEEDER				198
-	1	1	1	1	1	993111-1	PIN, SLOTTED SPRING 3.0 X 20.0				177
-	1	1	1	1	1	8-22280-7	SPRING, COMPRESSION				176
-	1	1	1	1	1	1752353-2	GUIDE PIN, HOLDDOWN				175
-	1	1	1	1	1	1901680-2	GUIDE PIN, HOLDDOWN				174
-	-	-	-	-	2	-	-				-
-	-	-	-	2	-	21045-3	RING, RETAIN, EXTERN, 3/16 CRESCENT				172
-	1	1	1	1	1	994969-1	MAGNET, RARE EARTH HIGH ENERGY				166
-	REF	REF	REF	REF	REF	994970-2	COUNTER, MAGNETIC				164
-	-	-	-	-	1	-	-				-
-	-	-	-	-	1	3-23627-7	PIN, RETAIN, GRVD, 3/16 X .854				137
-	-	-	-	-	1	-	-				-
-	-	-	-	-	1	-	-				-
-	-	REF	REF	-	-	SEE NOTE 4	MEMORY CHIP, PROGRAMMED				135
-	-	1	1	-	-	1633743-1	SERVO FEED LATCH ASM				133
-	1	1	1	1	1	1-22281-8	SPRING, COMPRESSION				121
-	1	1	1	1	1	1-18028-2	WASHER, FLAT, REG M4				119
-	-	REF	REF	-	-	2119944-1	FEED FINGER ASSEMBLY, SF				117
-	1	1	1	1	1	1-690438-0	FRONT STRIP GUIDE				96
-	2	2	2	2	2	2168083-1	SCR, SKT HD CAP, RoHS, M3 X 8.0				95
-	1	1	1	1	1	2168083-6	SCR, SKT HD CAP, RoHS, M5 X 65				93
-	1	1	1	1	1	455888-5	SPACER, CRIMPER				82
-	1	1	1	1	1	2119956-1	DOCUMENTATION PACKAGE				71
-	1	-	-	-	1	2119740-1	TAG, IDENTIFICATION				67
-	2	2	2	2	2	2168078-1	SCREW, DRIVE, RH, RoHS, 2 x .188				66
-	1	-	-	1	1	2119793-1	LIMITER, ADJUSTMENT BOLT				63
-	3	-	3	3	3	992763-5	SCR, SET, SOC, CONE POINT, M3 X 4.0				62
-	2	2	2	2	2	2-18032-5	SCR, SET, FLT POINT M5 X 20.0				61
-	1	1	1	1	1	2079383-4	SCR, BHSC, RoHS (M4 X 8)				60
-	-	-	-	-	1	5-18022-5	SCR, HEX HD CAP, M4 X 6.0				59
-	1	1	1	1	1	985575-4	SCR, FLT SKT HD CAP M3 X 12.0				57
-	-	-	-	-	1	1338683-8	FEED PAWL				56
-	4	4	4	4	4	2168400-1	SHCS, LOW HEAD, RoHS, M4 X 12				54
-	1	1	1	1	1	1-5018030-0	NUT, HEX, REG, RoHS, M3.5				52
-	1	1	1	1	1	1901681-2	HOLDDOWN, TERMINAL				51
-	1	1	1	1	1	1-1752354-1	STANDOFF, HOLD-DOWN				50
-	-	-	-	-	1	2	18023-9	SCR, SKT HD CAP M4 X 6.0			49
-	-	-	-	-	-	1	2119652-1	FEED CAM, PRE FEED			48
-	-	-	-	-	-	1	2119653-1	FEED CAM, POST FEED			47
-	1	1	1	1	1	2119656-3	APPLICATOR BASIC ASSEMBLY, SF				46
-	1	-	-	1	1	2119370-1	RAM, AMP STYLE, SIDE FEED				44
-	1	1	1	1	1	2079383-7	SCR, BHSC, RoHS (M8 X 25)				41
-	1	-	-	1	1	2119645-1	DISC, NUMBERED FA WIRE ADJUSTMENT				40
-	1	-	-	1	1	2119957-1	APPLICATOR SHIM PACK				39
-	1	1	1	1	1	2119644-3	RAM WASHER, PRECISION				38
-	1	1	1	1	1	2119085-1	FA HEAD, ATLANTIC STYLE				37
-	1	-	-	1	1	2119092-1	BOLT, ADJUSTMENT				35
-	1	1	1	1	1	1-1752356-6	SUPPORT, TERMINAL				34
-	2	2	2	2	2	2079383-5	SCR, BHSC, RoHS (M4 X 20)				33
-	1	1	1	1	1	2161328-1	HEX HEAD, FLANGED, M5 X 8mm LONG				32
-	1	1	1	1	1	1320908-7	SPACER, STRIP GUIDE				30
-	1	1	1	1	1	1-1901086-7	PLATE, STRIP GUIDE				29
-	1	1	1	1	1	455888-5	SPACER, CRIMPER				28
-	2	2	2	2	2	22283-1	SPRING, COMPRESSION				27
-	1	1	1	1	1	356835-1	LEVER, DRAG RELEASE				26
-	1	1	1	1	1	240792-1	DRAG, TERMINAL				25
-	1	1	1	1	1	1320928-6	STRIP GUIDE				24
-	1	1	1	1	1	980371-4	SCR, SKT HD SHLDR 5.0 DIA X 6.0				23
-	1	1	1	1	1	2168083-2	SCR, SKT HD CAP, RoHS, M4 X 8.0				21
-	1	1	1	1	1	1-18028-2	WASHER, FLAT, REG M4				20
-	1	1	1	1	1	2119533-1	STRIPPER, SIDE FEED				19
-	1	1	1	1	1	2119806-1	INSERT, SHEAR				13
-	1	1	1	1	1	3-22280-3	SPRING, COMPRESSION				12
-	1	1	1	1	1	1-356885-4	STOP, SHEAR				11
-	1	1	1	1	1	2119805-2	SHEAR HOLDER, FRONT				10
-	1	1	1	1	1	318059-4	FLOATING SHEAR, FRONT				9
-	-	-	-	-	-	-	-				-
-	-	-	-	-	-	-	-				-
-	-	-	-	-	-	-	-				-
-	1	1	1	1	1	2-2119781-2	DEPRESSOR, SHEAR				5
-	1	1	1	1	1	2-238011-1	BLOCK, CRIMPER SPACER				4
-	1	1	1	1	1	2-2119784-5	CRIMPER, INSULATION O PREMIUM				3
-	1	1	1	1	1	455888-5	SPACER, CRIMPER				2
-	1	1	1	1	1	456410-4	CRIMPER, WIRE PREMIUM				1
-77	-7	-6	-5	-2	-1	PART NO	DESCRIPTION				ITEM NO

DIMENSIONS:	TOLERANCES UNLESS OTHERWISE SPECIFIED:	OWN	CHK	DATE	TE Connectivity
mm	0 PLC ± 1 PLC ± 2 PLC ± 3 PLC ± 4 PLC ± ANGLES ± FINISH ±	K. HUANG	S. XI	06JUL2012	Harrisburg, PA 17105-3608
		APVD	S. XI	06JUL2012	NAME Ocean Side Feed Applicator
					PRODUCT SPEC -
					APPLICATION SPEC -
					SIZE CAGE CODE DRAWING NO RESTRICTED TO
					A1 00779 C-2151258
					Customer Accessible Production Drawing SCALE 1:2 SHEET 1 OF 4 REV B

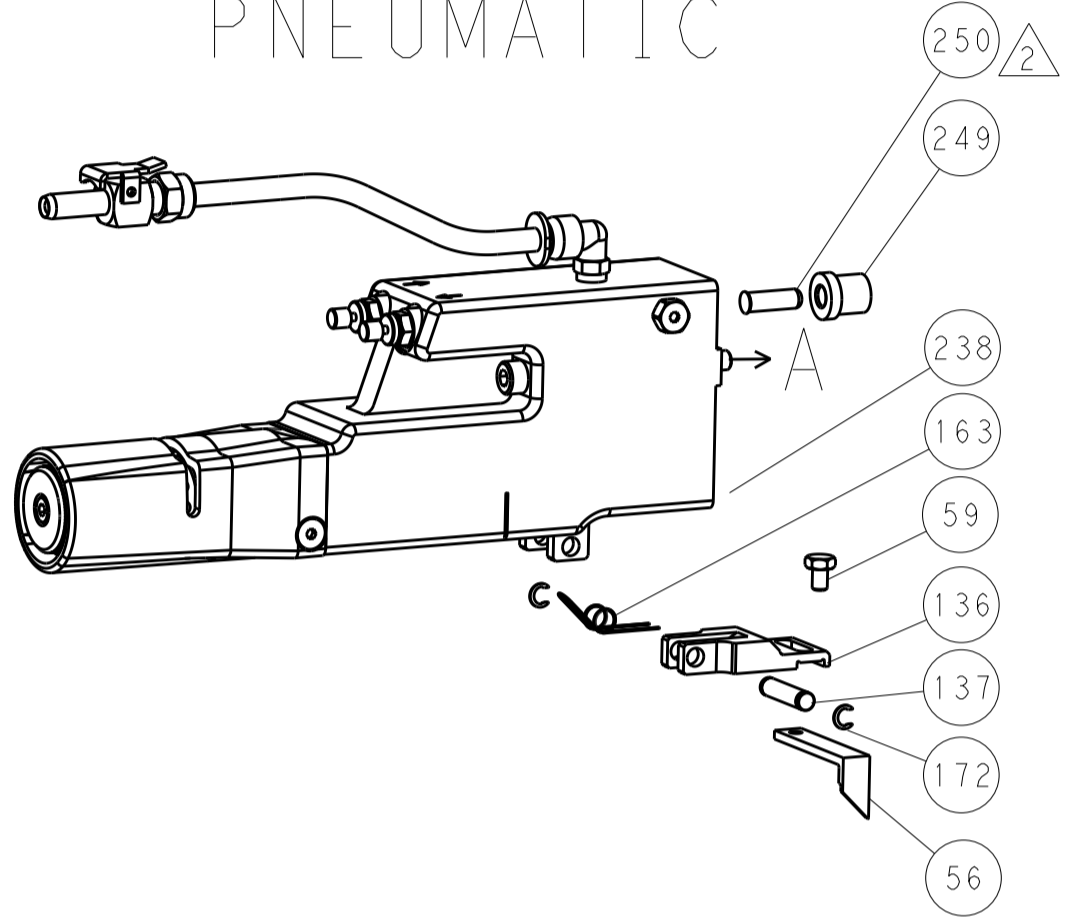
SHEETS 3 & 4 ARE NOT REQUIRED FOR ATLANTIC VERSION

LOC		DIST		REVISIONS			
A	66	P	LTM	DESCRIPTION	DATE	DWN	APVD
		-	-	SEE SHEET 1	-	-	-

FEED TYPE MECHANICAL



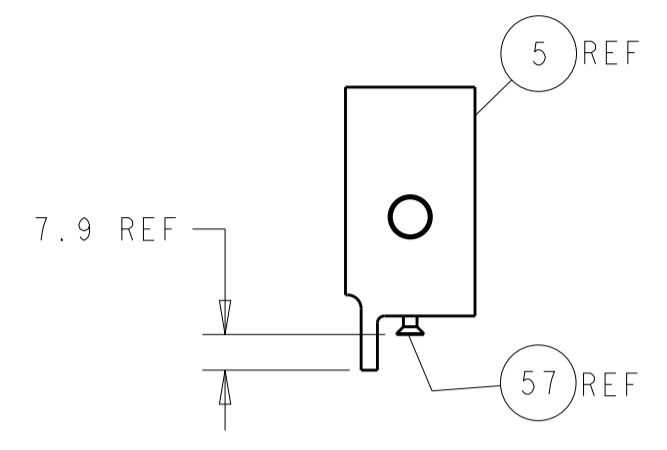
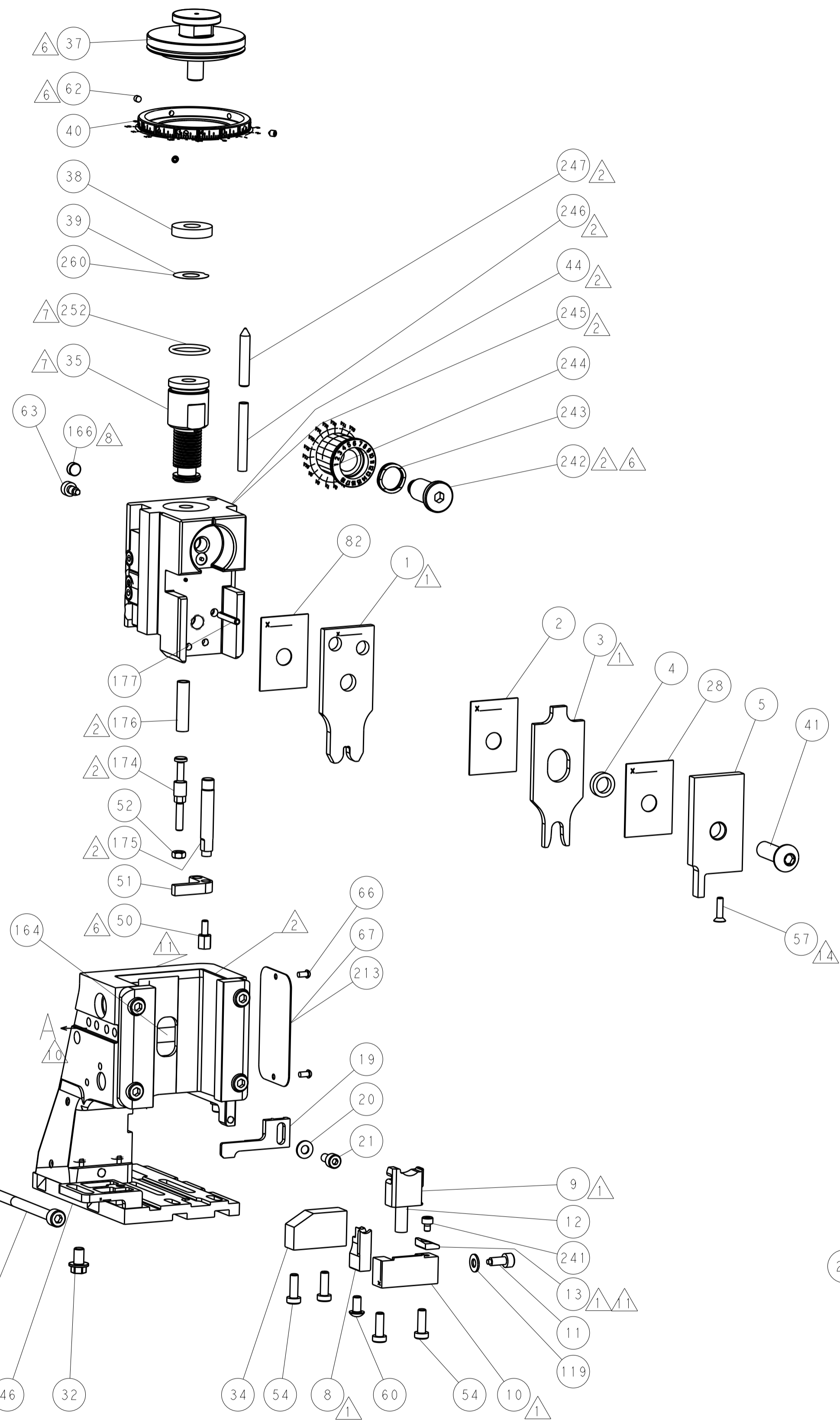
PNEUMATIC



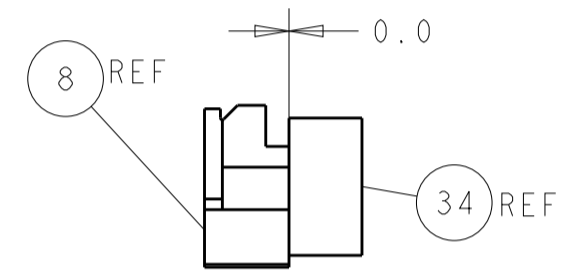
SERVO LATCH PLATE



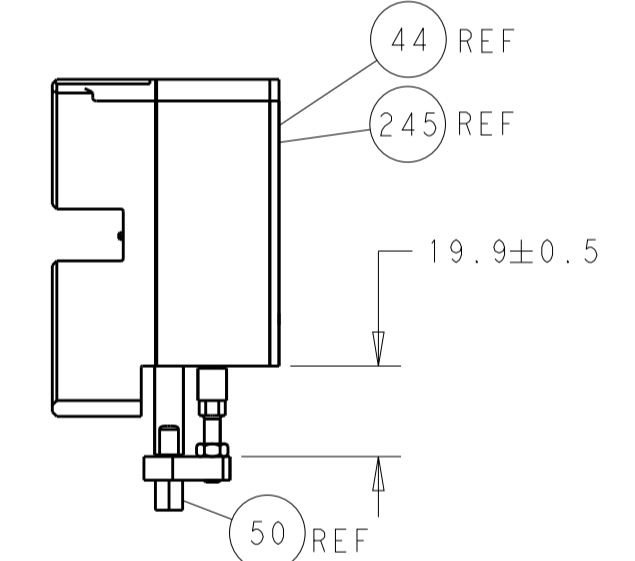
CAM POSITIONS



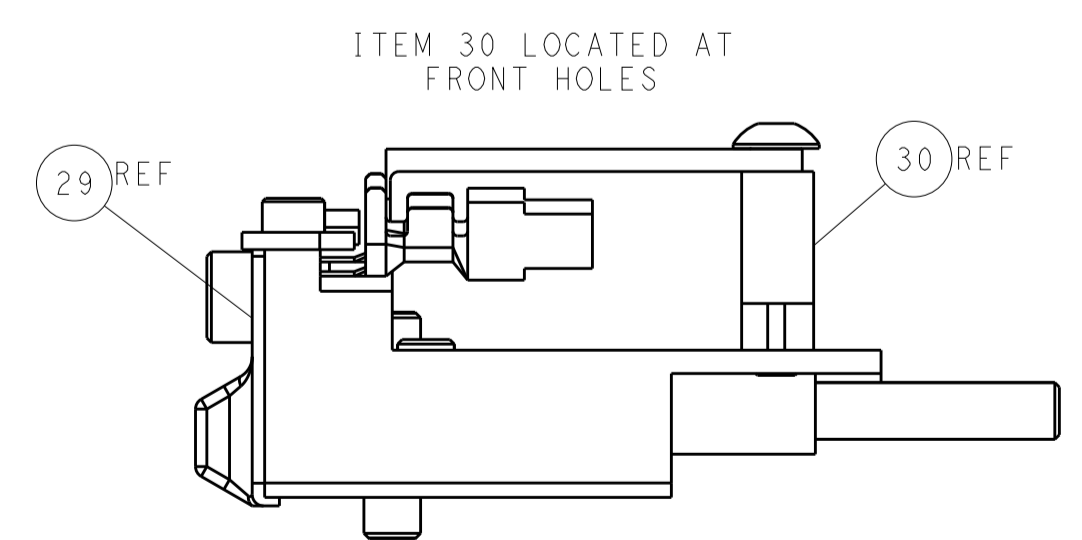
SHEAR DEPRESSOR DETAIL



TERMINAL SUPPORT LOCATION



HOLDDOWN SET-UP



FEED TRACK POSITION GUIDE BY INSULATION BARREL

ATLANTIC VERSION
 Shown on sheets 1 of 4 & 2 of 4
 (Pacific version shown on sheets 3 of 4 & 4 of 4)

DIMENSIONS:		TOLERANCES UNLESS OTHERWISE SPECIFIED:		DWN 06 JUL 2012		TE Connectivity	
mm	0 PLC ±	1 PLC ±	2 PLC ±	3 PLC ±	4 PLC ±	Harrisburg, PA 17105-3608	
MATERIAL:		FINISH:		CHK S.XI 06 JUL 2012		NAME Ocean Side Feed Applicator	
				APVD S.XI 06 JUL 2012		SIZE CAGE CODE DRAWING NO RESTRICTED TO	
				PRODUCT SPEC		A1 00779 ©=2151258	
				APPLICATION SPEC		SCALE 1:2 SHEET 2 OF 4 REV B	
				WEIGHT		Customer Accessible Production Drawing	

	PART NUMBER	REVISION	DESCRIPTION	FEED TYPE	CONVERT TO	PART NUMBERS REQUIRED					
	2-2151258-1	B	FINE CRIMP HEIGHT ADJUST	MECHANICAL	PNEUMATIC FEED	2119950-1	1338685-1	5-18022-5	2119641-2	2119799-1	2063440-1
	2-2151258-2	B	FINE CRIMP HEIGHT ADJUST	PNEUMATIC	SERVO LATCH PLATE	2119951-1	-	8-2151258-5	1901094-3	-	2168400-6 (QUANTITY 2)
	2-2151258-5	B	FINE CRIMP HEIGHT ADJUST	SERVO LATCH PLATE	SMART APPLICATOR	2161326-1	-	8-2151258-4	-	-	-
	2-2151258-7	B	FINE CRIMP HEIGHT ADJUST	NONE	MECHANICAL FEED	2119949-1	1338685-1	5-18022-5	2119653-2	-	-
	7-2151258-7	A	CRIMP TOOLING KIT	-	PNEUMATIC FEED	2119950-1	1338685-1	5-18022-5	2119641-2	2119799-1	2063440-1

APPLICATOR DATA		
CRIMP	SIZE	TYPE
WIRE	3.30 mm [.130]	F
INSUL	6.60 mm [.260]	O
APPLICATOR INSTRUCTIONS 408-10389		

TERMINAL DATA: TE TERMINAL		TE CRIMP SPECIFICATION	
TERMINAL NAME: STANDARD POWER TIMER TYP A			
WIRE STRIP LENGTH		INSULATION DIAMETER RANGE	
5.00-5.60 mm [.197-.220 IN]		Ø 6.0mm [.236 IN] MAX	
TERMINAL APPLICATION SPECIFICATION	114-18037		
TERMINALS APPLIED			
TE TERMINAL	TE TERMINAL	TE SEAL	TE SEAL
928966-1	2-928966-2	1394512-1	
928966-2	1-964334-1	963245-1	
928966-7	1-964334-5		
1-928966-2	968037-2		
1-928966-3	1-968037-4		
2-928966-1	2-968037-4		

WIRE SIZE	CRIMP HEIGHT mm [INCH]	CRIMP HEIGHT REFERENCE SETTING
4.00mm ²	2.35 +/- 0.05 [.093 +/- .002]	4.4

- 1 RECOMMENDED SPARE PARTS
- 2 GREASE BEARING SURFACES LIGHTLY
- 3. LUBRICATE DAILY PER THE APPLICATOR INSTRUCTION SHEET SUPPLIED WITH THE APPLICATOR.
- 4 APPLICATOR SPECIFIC DATA TO BE ENTERED INTO BLANK MEMORY CHIP AT ASSEMBLY. SEE BELOW FOR PART NUMBER:
MECHANICAL FEED WITH "SMART APPLICATOR" CONVERSION: 8-2151258-4
PNEUMATIC FEED WITH "SMART APPLICATOR" CONVERSION: 8-2151258-4
SERVO FEED WITH "FINE CRIMP HEIGHT ADJUST": 8-2151258-5
- 5. ADJUSTMENT OF THE STRIPPER MAY BE REQUIRED WHEN MOVING THE APPLICATOR BETWEEN BENCH AND LEADMAKER APPLICATIONS.
- 6 APPLY PART NUMBER 1-23419-5 LOCTITE TO THREADS OF ITEMS 50 & 62. APPLY PART NUMBER 2-23419-6 LOCTITE TO THREADS OF ITEMS 242.
- 7 GREASE THREADS, GROOVE AND O-RING ON ITEMS 139 & 152.
- 8 MAGNET MUST BE ORIENTED CORRECTLY IN ORDER TO PROPERLY ACTUATE THE COUNTER.
- 9 CRIMP HEIGHT REFERENCE SETTING WAS THE SETTING USED WHEN THE APPLICATOR WAS QUALIFIED AT THE FACTORY. ADJUSTMENT MAY BE NECESSARY WHEN RUNNING APPLICATOR IN THE FIELD.
- 10 SPARE FEED CAM STORAGE LOCATION REFER TO INSTRUCTION SHEET FOR ADDITIONAL INFORMATION.
- 11 TO CONVERT THE APPLICATOR TO A NON-CARRIER CUTTING STYLE, REMOVE ITEM 13 AND ATTACH TO THE LOCATION ON BACK SIDE OF THE HOUSING. REFER TO INSTRUCTION SHEET FOR ADDITIONAL INFORMATION.
- 12 THIS APPLICATOR APPLIES TERMINAL WITH A SEAL. INSULATION RANGE QUOTED IS THAT OF THE TERMINAL. THE SEAL INSULATION RANGE IS Ø3.4- 3.7 [.134 - .146 IN.]
- 13 APPLY TORQ-SEAL IN ALLEN SOCKET TO FILL HOLE AFTER FLAT HD HAS BEEN ADJUSTED TO CORRECT HEIGHT AT QUALIFICATION. APPLY #1-23419-5 LOC-TITE TO THREADS.
- 14 ACCORDING INSULATION Ø IS TO CHOOSE THE SINGLE WIRE SEAL ATTENTION:DIFFERENT HOUSING CAVITY DIAMETER ARE POSSIBLE. PLEASE NOTICE APPROPRIATE HOUSING PRODUCT SPECIFICATION!

***WARNING**
ON INSTALLATION, SET WIRE DISC, ITEM 40 TO LARGEST WIRE SIZE SETTING. USE OF SETTINGS BELOW MINIMUM REQUIRED CRIMP HEIGHT SETTING WILL CAUSE DAMAGE TO CRIMP TOOLING.

-	1	1	1	1	2119782-1	FINE ADJUST HEAD ASM, PACIFIC STYLE	251
-	-	-	1	-	2119640-1	PUSH ROD, AIR FEED	250
-	-	-	1	-	2079988-1	BUSHING, LCH5-12, MISUMI	249
-	1	1	1	1	1-22279-3	SPRING, COMPRESSION	246
-	1	1	1	1	2119082-9	CAM, SNAIL, INSULATION ADJUSTMENT	244
-	1	1	1	1	2079764-1	WASHER, WAVE SPRING, CREST-TO-CREST	243
-	1	1	1	1	2119083-1	RETAINER, INSULATION DIAL	242
-	1	1	1	1	7-18023-7	SCR, SKT HD CAP M3 X 4.0	241
-	-	2	-	-	2168400-6	SHCS, LOW HEAD, RoHS, M5 X 16	240
-	-	-	-	1	2119580-1	MECHANICAL FEED ASSEMBLY	239
-	-	-	1	-	2063440-1	AIR FEED MODULE	238
-	-	1	-	-	2119740-2	TAG, IDENTIFICATION	213
-	-	1	-	-	1901094-3	SPACER, FEEDER	198
-77	-27	-25	-22	-21	PART NO	DESCRIPTION	ITEM NO

PACIFIC VERSION
Shown on sheets 3 of 4 & 4 of 4
(Atlantic version shown on sheets 1 of 4 & 2 of 4)

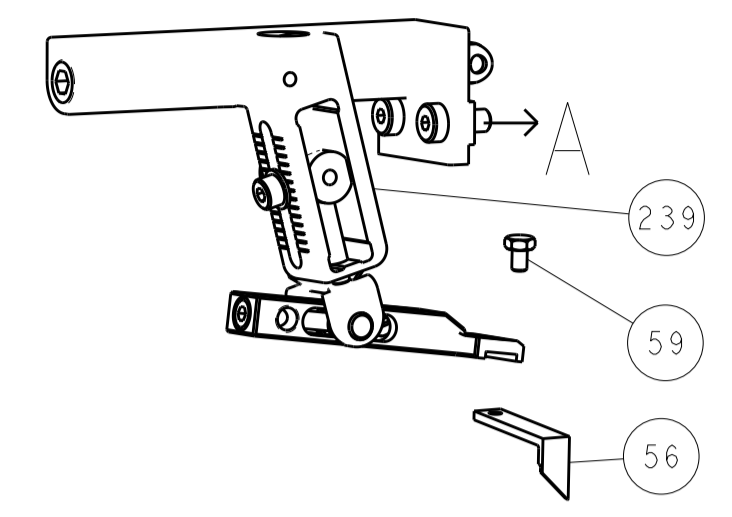
SET UP GAUGE	LOC	DIST	REVISIONS					
2119599-1	A	66	P	LTN	DESCRIPTION	DATE	DWN	APVD
			-	-	SEE SHEET 1	-	-	-

-	1	1	1	1	993111-1	PIN, SLOTTED SPRING 3.0 X 20.0	177
-	1	1	1	1	8-22280-7	SPRING, COMPRESSION	176
-	1	1	1	1	1752353-2	GUIDE PIN,HOLDDOWN	175
-	1	1	1	1	1901680-2	GUIDE PIN,HOLDDOWN	174
-	-	-	2	-	21045-3	RING, RETAIN, EXTERN, 3/16 CRESCENT	172
-	1	1	1	1	994969-1	MAGNET, RARE EARTH HIGH ENERGY	166
-	REF	REF	REF	REF	994970-2	COUNTER, MAGNETIC	164
-	-	-	1	-	240638-1	SPRING, FEED FINGER	163
-	1	1	1	1	8-21084-1	O-RING, .801 ID, .070 DIA. MAT.	152
-	-	-	1	-	2119641-2	FEED CAM, AIR FEED	151
-	1	1	1	1	2119798-2	DETENT PIN	145
-	1	1	1	1	2079383-8	SCR, BHSC, RoHS (M4 X 16)	144
-	4	4	4	4	2168400-5	SHCS, LOW HEAD, RoHS, M4 X 20	143
-	-	-	-	1	2119653-2	FEED CAM, POST FEED	142
-	1	1	1	1	2119656-4	APPLICATOR BASIC ASSEMBLY, SF	141
-	1	1	1	1	2119650-1	RAM, ASIAN STYLE, SIDE FEED	140
-	1	1	1	1	2119092-2	BOLT, ADJUSTMENT	139
-	-	-	1	-	3-23627-7	PIN, RETAIN, GRVD, 3/16 X .854	137
-	-	-	1	-	2119799-1	HOLDER, FEED FINGER, AF	136
-	-	REF	-	-	SEE NOTE 4	MEMORY CHIP, PROGRAMMED	135
-	-	1	-	-	1633743-1	SERVO FEED LATCH ASM	133
-	1	1	1	1	1-22281-8	SPRING, COMPRESSION	121
-	1	1	1	1	1-18028-2	WASHER, FLAT, REG M4	119
-	-	REF	-	-	2119944-1	FEED FINGER ASSEMBLY,SF	117
-	1	1	1	1	1-690438-0	FRONT STRIP GUIDE	96
-	2	2	2	2	2168083-1	SCR, SKT HD CAP, RoHS, M3 X 8.0	95
-	1	1	1	1	2168083-6	SCR, SKT HD CAP, RoHS, M5 X 65	93
-	1	1	1	1	455888-5	SPACER, CRIMPER	82
-	1	1	1	1	2119956-1	DOCUMENTATION PACKAGE	71
-	1	-	1	1	2119740-1	TAG, IDENTIFICATION	67
-	2	2	2	2	2168078-1	SCREW, DRIVE, RH, RoHS, 2 x .188	66
-	1	1	1	1	2119793-1	LIMITER, ADJUSTMENT BOLT	63
-	3	3	3	3	992763-5	SCR, SET, SOC, CONE POINT, M3 x 4.0	62
-	2	2	2	2	2-18032-5	SCR, SET, FLT POINT M5 X 20.0	61
-	-	-	1	1	5-18022-5	SCR, HEX HD CAP, M4 X 6.0	59
-	1	1	1	1	985575-4	SCR, FLT SKT HD CAP M3 X 12.0	57
-	-	-	1	1	1338683-8	FEED PAWL	56
-	1	1	1	1	1-5018030-0	NUT, HEX, REG, RoHS, M3.5	52
-	1	1	1	1	1901681-2	HOLDDOWN, TERMINAL	51
-	1	1	1	1	1-1752354-1	STANDOFF,HOLD-DOWN	50
-	-	-	1	2	18023-9	SCR, SKT HD CAP M4 X 6.0	49
-	-	-	-	1	2119652-1	FEED CAM, PRE FEED	48
-	1	1	1	1	2079383-7	SCR, BHSC, RoHS (M8 X 25)	41
-	1	1	1	1	2119645-1	DISC, NUMBERED FA WIRE ADJUSTMENT	40
-	1	1	1	1	2119957-1	APPLICATOR SHIM PACK	39
-	1	1	1	1	2119644-3	RAM WASHER, PRECISION	38
-	1	1	1	1	1-1752356-6	SUPPORT, TERMINAL	34
-	2	2	2	2	2079383-5	SCR, BHSC, RoHS (M4 X 20)	33
-	1	1	1	1	2161328-1	HEX HEAD, FLANGED, M5 x 8mm LONG	32
-	1	1	1	1	1320908-7	SPACER, STRIP GUIDE	30
-	1	1	1	1	1-1901086-7	PLATE, STRIP GUIDE	29
-	1	1	1	1	455888-5	SPACER, CRIMPER	28
-	2	2	2	2	22283-1	SPRING, COMPRESSION	27
-	1	1	1	1	356835-1	LEVER, DRAG RELEASE	26
-	1	1	1	1	240792-1	DRAG, TERMINAL	25
-	1	1	1	1	1320928-6	STRIP GUIDE	24
-	1	1	1	1	980371-4	SCR, SKT HD SHLDR 5.0 DIA X 6.0	23
-	1	1	1	1	2168083-2	SCR, SKT HD CAP, RoHS, M4 X 8.0	21
-	1	1	1	1	1-18028-2	WASHER, FLAT, REG M4	20
-	1	1	1	1	2119533-1	STRIPPER, SIDE FEED	19
-	1	1	1	1	2119806-1	INSERT, SHEAR	13
-	1	1	1	1	3-22280-3	SPRING, COMPRESSION	12
-	1	1	1	1	1-356885-4	STOP, SHEAR	11
-	1	1	1	1	2119805-2	SHEAR HOLDER, FRONT	10
-	1	1	1	1	318059-4	FLOATING SHEAR, FRONT	9
-	1	1	1	1	1333229-5	ANVIL, COMBINATION	8
-	-	-	-	-	-	-	7
-	-	-	-	-	-	-	6
-	1	1	1	1	2-2119781-2	DEPRESSOR, SHEAR	5
-	1	1	1	1	2-238011-1	BLOCK, CRIMPER SPACER	4
-	1	1	1	1	2-2119784-5	CRIMPER, INSULATION O PREMIUM	3
-	1	1	1	1	455888-5	SPACER, CRIMPER	2
-	1	1	1	1	456410-4	CRIMPER, WIRE PREMIUM	1
-77	-27	-25	-22	-21	PART NO	DESCRIPTION	ITEM NO

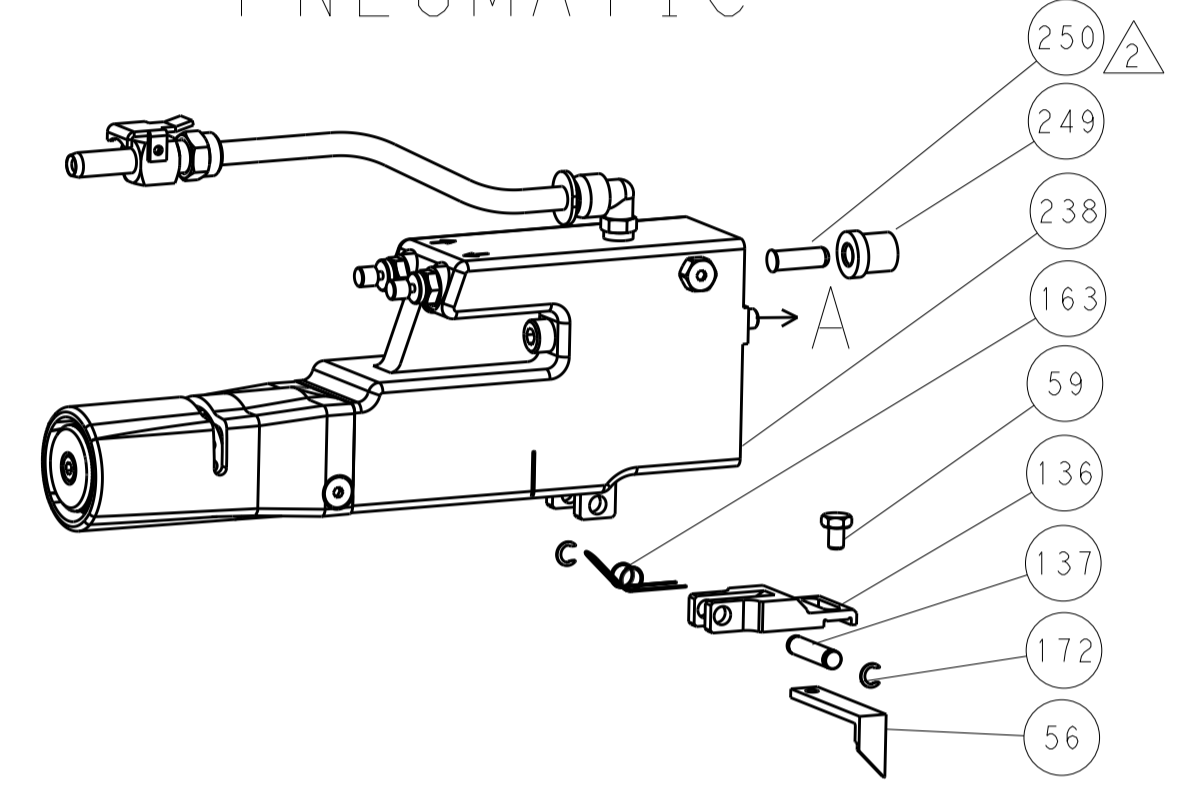
DIMENSIONS: mm 	TOLERANCES UNLESS OTHERWISE SPECIFIED: 0 PLC ± 1 PLC ± 2 PLC ± 3 PLC ± 4 PLC ± ANGLES ± FINISH	DWN H. HUANG 06JUL2012 CHK S.XI 06JUL2012 APVD S.XI 06JUL2012 PRODUCT SPEC APPLICATION SPEC WEIGHT MATERIAL	NAME Ocean Side Feed Applicator SIZE CASE CODE DRAWING NO RESTRICTED TO A1 00779 ©=2151258 Customer Accessible Production Drawing SCALE 1:2 SHEET 3 OF 4 REV B
-----------------------	---	---	---

REVISONS		DATE	OWN	APVD
LOC	DIST			
A	66			
P. LTM	DESCRIPTION			
-	SEE SHEET 1			

FEED TYPE MECHANICAL



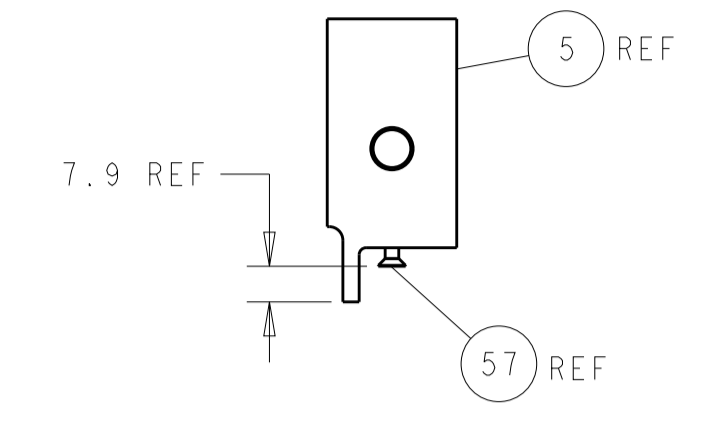
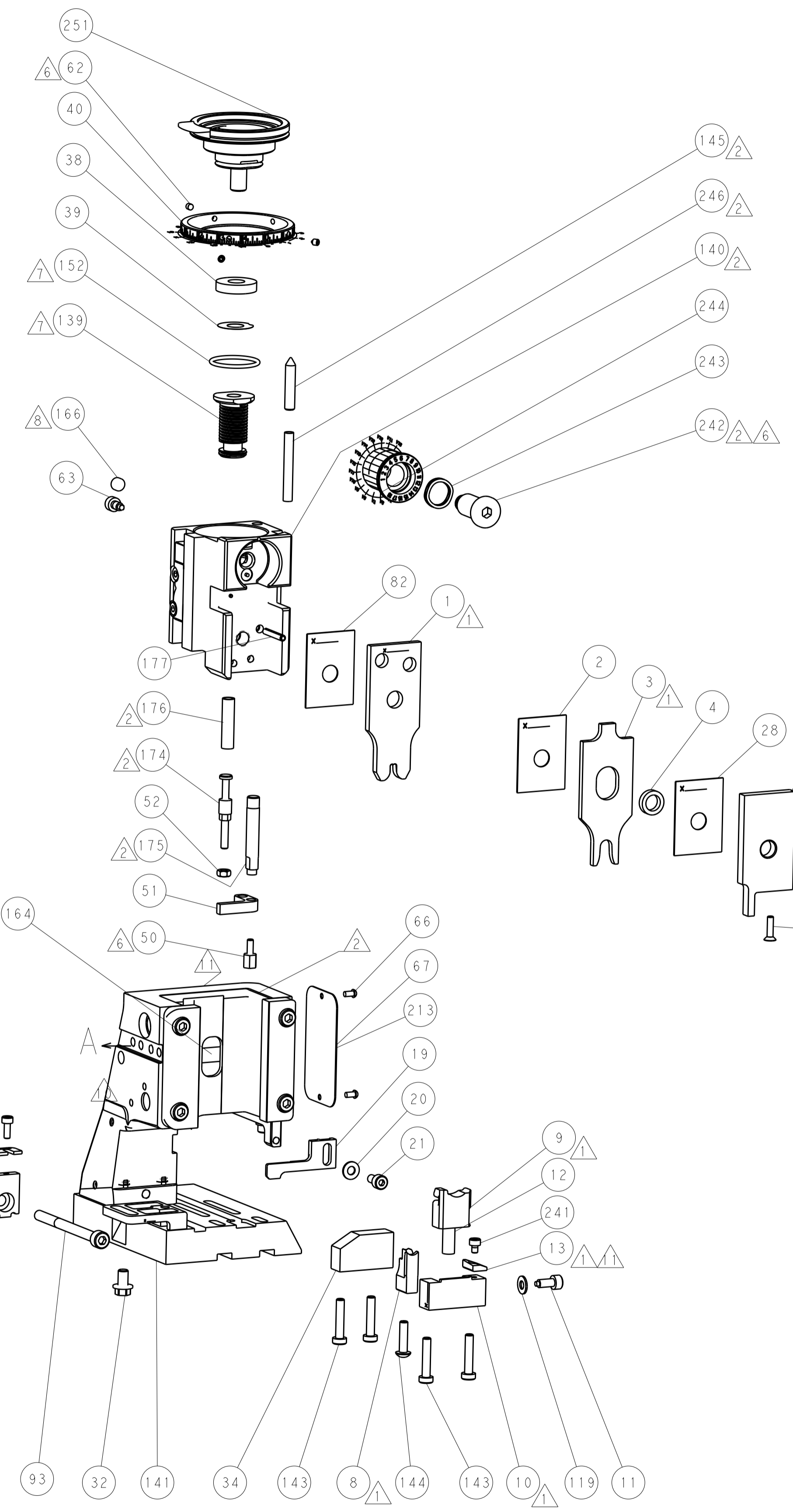
PNEUMATIC



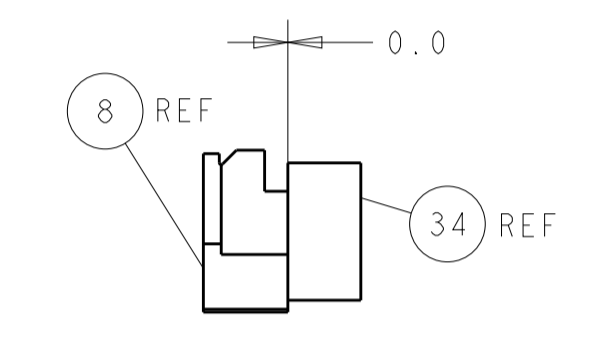
SERVO LATCH PLATE



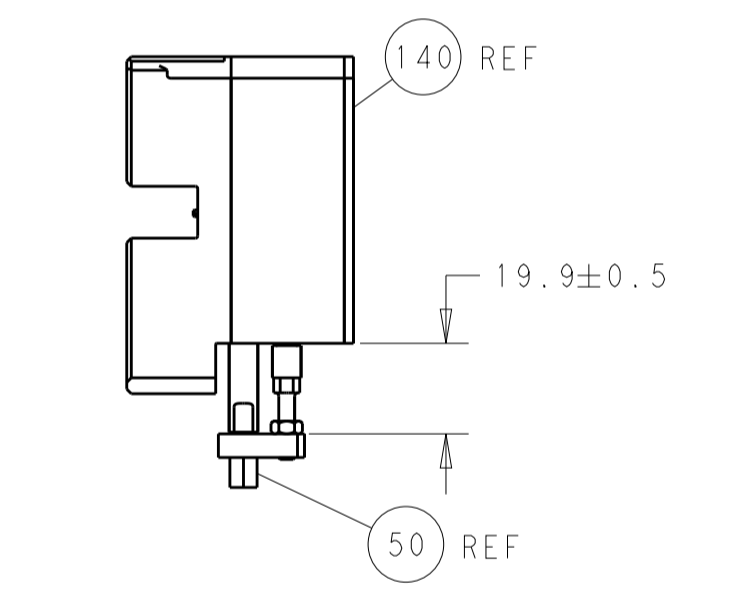
CAM POSITIONS



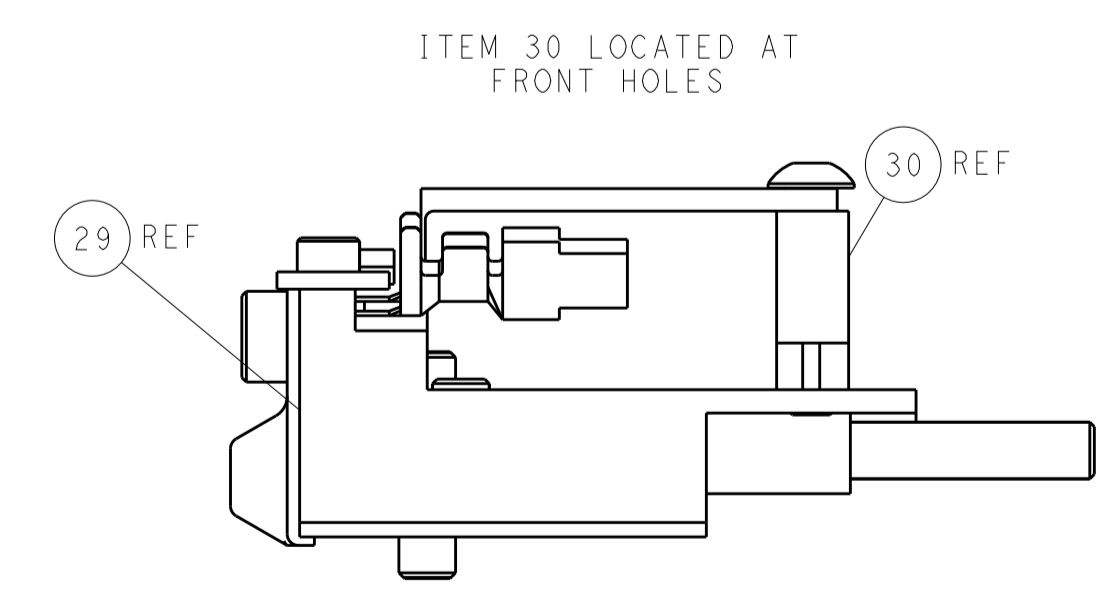
SHEAR DEPRESSOR DETAIL



TERMINAL SUPPORT LOCATION



HOLDDOWN SET-UP



FEED TRACK POSITION GUIDE BY INSULATION BARREL

PACIFIC VERSION
 Shown on sheets 3 of 4 & 4 of 4
 (Atlantic version shown on sheets 1 of 4 & 2 of 4)

DIMENSIONS:		TOLERANCES UNLESS OTHERWISE SPECIFIED:		DWN R. HUANG 06 JUL 2012		STE TE Connectivity	
mm	0 PLC ±	1 PLC ±	2 PLC ±	3 PLC ±	4 PLC ±	5 PLC ±	Harrisburg, PA 17105-3608
MATERIAL:		FINISH:		CHK S. XI 06 JUL 2012		NAME Ocean Side Feed Applicator	
				APVD S. XI 06 JUL 2012		SIZE CAGE CODE DRAWING NO	
				PRODUCT SPEC		RESTRICTED TO	
				APPLICATION SPEC		A 00779 C=2151258	
				WEIGHT		SCALE 1:2 SHEET 4 OF 4 REV B	
				Customer Accessible Production Drawing		SHEETS 1 & 2 ARE NOT REQUIRED FOR PACIFIC VERSION	