

Surface Mount Fuse, 1.05 x 0.55 mm, Super-Quick-Acting FF, 32 VDC



Exemplary part photo depending on part no.

UL 248-14 · 32VDC · Super-Quick-Acting FF



Description

- UL characteristic
- Low melting I²t-values, fast interruption
- Marking optional
- Impermeable to potting compound

Standards

- UL 248-14
- CSA C22.2 no. 248.14

Approvals

- UL File Number: E41599

Applications

- Secondary Protection
- Circuits without inrush
- Semiconductor protection
- Digital Consumer Electronics

References

[Packaging Details](#)

Weblinks

[pdf-datasheet](#), [html-datasheet](#), [General Product Information](#), [Packaging details](#), [Approvals](#), [CE declaration of conformity](#), [RoHS](#), [CHINA-RoHS](#), [REACH](#), [Distributor-Stock-Check](#), [Detailed request for product](#)

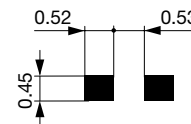
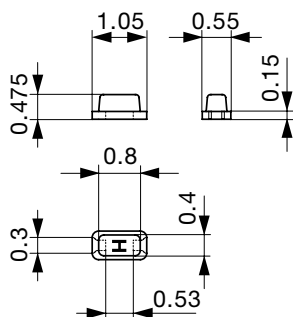
Technical Data

| | |
|------------------------------|-------------------------------|
| Rated Voltage | 24 - 32VDC |
| Rated current | 0.375 - 5 A |
| Breaking Capacity | 35 A |
| Characteristic | Super-Quick-Acting FF |
| Mounting | PCB,SMT |
| Admissible Ambient Air Temp. | -55 °C to 125 °C |
| Climatic Category | 55/125/21 acc. to IEC 60068-1 |
| Material: Housing | Thermoset |
| Material: Terminals | Gold-Plated Copper Alloy |
| Unit Weight | 0.004 g |
| Storage Conditions | 0 °C to 60 °C, max. 70% r.h. |
| Product Marking | Letter (see variants) marking |

| | |
|------------------------------|------------------------------------------------------------|
| Soldering Methods | Reflow Soldering Profile |
| Solderability | 245 °C / 3sec acc. to IEC 60068-2-58, Test Td |
| Resistance to Soldering Heat | 260 +0/-5 °C / 30sec acc. to IPC/JEDEC J-STD-020D, 1 cycle |
| Flammability | min. UL 94V-1 (acc. to EIA/IS-722, Test 4.12) |

Dimension

H 1.05 mm

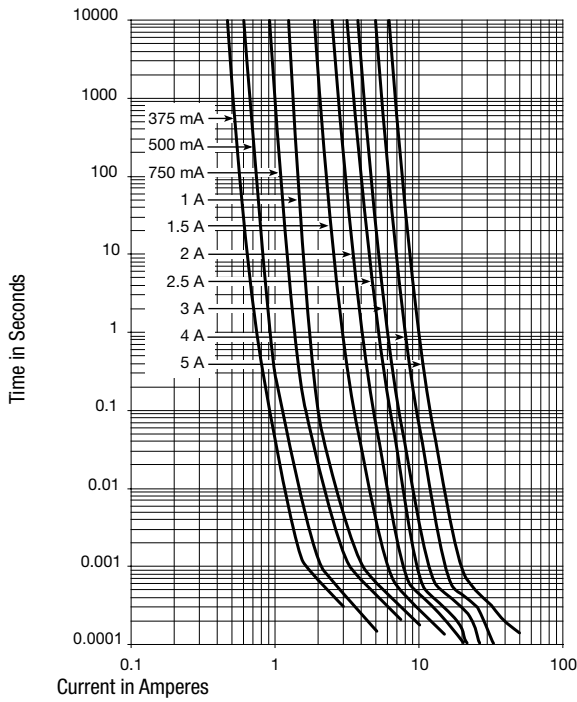


Soldering pads


Pre-Arcing Time


| Rated Current I _n | 1.0 x I _n min | 2.0 x I _n max |
|------------------------------|--------------------------|--------------------------|
| 0.375 A - 5 A | 4 h | 5 s |

Time-Current-Curves



All Variants

| Rated Current [A] | Rated Voltage [VDC] | Marking | Breaking Capacity | Voltage Drop 1.0 In max. [mV] | Voltage Drop 1.0 In typ. [mV] | Cold Resistance typ. [mΩ] | Melting I ² t 8.0 In typ. [A ² s] |  | Order Number |
|-------------------|---------------------|---------|-------------------|-------------------------------|-------------------------------|---------------------------|---------------------------------------------------------|---------------------------------------------------------------------------------------|--------------|
| 0.375 | 32 | E | 1) | 90 | 70 | 173 | 0.003 | ● | 3414.0112.11 |
| 0.375 | 32 | E | 1) | 90 | 70 | 173 | 0.003 | ● | 3414.0112.22 |
| 0.375 | 32 | E | 1) | 90 | 70 | 173 | 0.003 | ● | 3414.0112.24 |
| 0.375 | 32 | E | 1) | 90 | 70 | 173 | 0.003 | ● | 3414.0112.26 |
| 0.5 | 32 | F | 1) | 90 | 67 | 124 | 0.004 | ● | 3414.0113.11 |
| 0.5 | 32 | F | 1) | 90 | 67 | 124 | 0.004 | ● | 3414.0113.22 |
| 0.5 | 32 | F | 1) | 90 | 67 | 124 | 0.004 | ● | 3414.0113.24 |
| 0.5 | 32 | F | 1) | 90 | 67 | 124 | 0.004 | ● | 3414.0113.26 |
| 0.75 | 32 | G | 1) | 90 | 63 | 78 | 0.009 | ● | 3414.0114.11 |
| 0.75 | 32 | G | 1) | 90 | 63 | 78 | 0.009 | ● | 3414.0114.22 |
| 0.75 | 32 | G | 1) | 90 | 63 | 78 | 0.009 | ● | 3414.0114.24 |
| 0.75 | 32 | G | 1) | 90 | 63 | 78 | 0.009 | ● | 3414.0114.26 |
| 1 | 32 | H | 1) | 90 | 63 | 57 | 0.016 | ● | 3414.0115.11 |
| 1 | 32 | H | 1) | 90 | 63 | 57 | 0.016 | ● | 3414.0115.22 |
| 1 | 32 | H | 1) | 90 | 63 | 57 | 0.016 | ● | 3414.0115.24 |
| 1 | 32 | H | 1) | 90 | 63 | 57 | 0.016 | ● | 3414.0115.26 |
| 1.5 | 32 | K | 1) | 90 | 62 | 37 | 0.029 | ● | 3414.0117.11 |
| 1.5 | 32 | K | 1) | 90 | 62 | 37 | 0.029 | ● | 3414.0117.22 |
| 1.5 | 32 | K | 1) | 90 | 62 | 37 | 0.029 | ● | 3414.0117.24 |
| 1.5 | 32 | K | 1) | 90 | 62 | 37 | 0.029 | ● | 3414.0117.26 |
| 2 | 32 | N | 1) | 90 | 58 | 26 | 0.044 | ● | 3414.0119.11 |
| 2 | 32 | N | 1) | 90 | 58 | 26 | 0.044 | ● | 3414.0119.22 |
| 2 | 32 | N | 1) | 90 | 58 | 26 | 0.044 | ● | 3414.0119.24 |
| 2 | 32 | N | 1) | 90 | 58 | 26 | 0.044 | ● | 3414.0119.26 |
| 2.5 | 32 | O | 1) | 90 | 59 | 21 | 0.06 | ● | 3414.0120.11 |
| 2.5 | 32 | O | 1) | 90 | 59 | 21 | 0.06 | ● | 3414.0120.22 |
| 2.5 | 32 | O | 1) | 90 | 59 | 21 | 0.06 | ● | 3414.0120.24 |
| 2.5 | 32 | O | 1) | 90 | 59 | 21 | 0.06 | ● | 3414.0120.26 |
| 3 | 32 | P | 1) | 90 | 52 | 17 | 0.098 | ● | 3414.0121.11 |

| Rated Current [A] | Rated Voltage [VDC] | Marking | Breaking Capacity | Voltage Drop 1.0 In max. [mV] | Voltage Drop 1.0 In typ. [mV] | Cold Resistance typ. [mΩ] | Melting I ² t 8.0 In typ. [A ² s] |  | Order Number |
|-------------------|---------------------|---------|-------------------|-------------------------------|-------------------------------|---------------------------|---------------------------------------------------------|-------------------------------------------------------------------------------------|--------------|
| 3 | 32 | P | 1) | 90 | 52 | 17 | 0.098 | ● | 3414.0121.22 |
| 3 | 32 | P | 1) | 90 | 52 | 17 | 0.98 | ● | 3414.0121.24 |
| 3 | 32 | P | 1) | 90 | 52 | 17 | 0.98 | ● | 3414.0121.26 |
| 4 | 32 | S | 1) | 90 | 60 | 13 | 0.113 | ● | 3414.0123.11 |
| 4 | 32 | S | 1) | 90 | 60 | 13 | 0.113 | ● | 3414.0123.22 |
| 4 | 32 | S | 1) | 90 | 60 | 13 | 0.113 | ● | 3414.0123.24 |
| 4 | 32 | S | 1) | 90 | 60 | 13 | 0.113 | ● | 3414.0123.26 |
| 5 | 24 | T | 2) | 90 | 52 | 10 | 0.288 | ● | 3414.0124.11 |
| 5 | 24 | T | 2) | 90 | 52 | 10 | 0.288 | ● | 3414.0124.22 |
| 5 | 24 | T | 2) | 90 | 52 | 10 | 0.288 | ● | 3414.0124.24 |
| 5 | 24 | T | 2) | 90 | 52 | 10 | 0.288 | ● | 3414.0124.26 |

Most Popular.

Availability for all products can be searched real-time:<http://www.schurter.com/Stock-Check/Stock-Check-SCHURTER>

1) 35 A @ 32 VDC

2) 35 A @ 24 VDC

Marking is optional: .xx.M = with Marking (e.g. 3414.0112.22.M)

Packaging Unit

- .xx = .11 Blister Tape of 100 pcs. in Plastic Bag
- .xx = .22 Blister Tape 18 cm Reel (1000 pcs.)
- .xx = .24 Blister Tape 18 cm Reel (5000 pcs.)
- .xx = .26 Blister Tape 33 cm Reel (15000 pcs.)