

Surface Mount Rectifiers

M1FA--M7FA

FEATURES

- For surface mounted applications
- Low leakage
- Low forward voltage drop
- High current capability
- Easily cleaned with Alcohol, Isopropnol and similar solvents
- The plastic material carries U/L recognition 94V-0



MECHANICAL DATA

- Case: JEDEC SMAFL, molded plastic
- Terminals: Solder plated, solderable per MIL- STD-202, Method 208
- Polarity: Color band denotes cathode end

Maximum Ratings (@TA = 25°C unless otherwise specified)

Characteristic	Symbol	M1FA	M2FA	M3FA	M4FA	M5FA	M6FA	M7FA	UNITS
Marking code		M1F	M2F	M3F	M4F	M5F	M6F	M7F	
Maximum recurrent peak reverse voltage	V_{RRM}	50	100	200	400	600	800	1000	V
Maximum RMS voltage	V_{RMS}	35	70	140	280	420	560	700	V
Maximum DC blocking voltage	V_{DC}	50	100	200	400	600	800	1000	V
Maximum average forward rectified current @TA=110°C	$I_{(AV)}$	1.0							A
Peak forward surge current 8.3ms single half-sine-wave superimposed on rated load	I_{FSM}	30							A

Thermal Characteristics

Characteristic	Symbol	M1FA	M2FA	M3FA	M4FA	M5FA	M6FA	M7FA	UNITS
Operating temperature range	T_J	- 55 ---- + 150							°C
Storage temperature range	T_{STG}	- 55 ---- + 150							°C

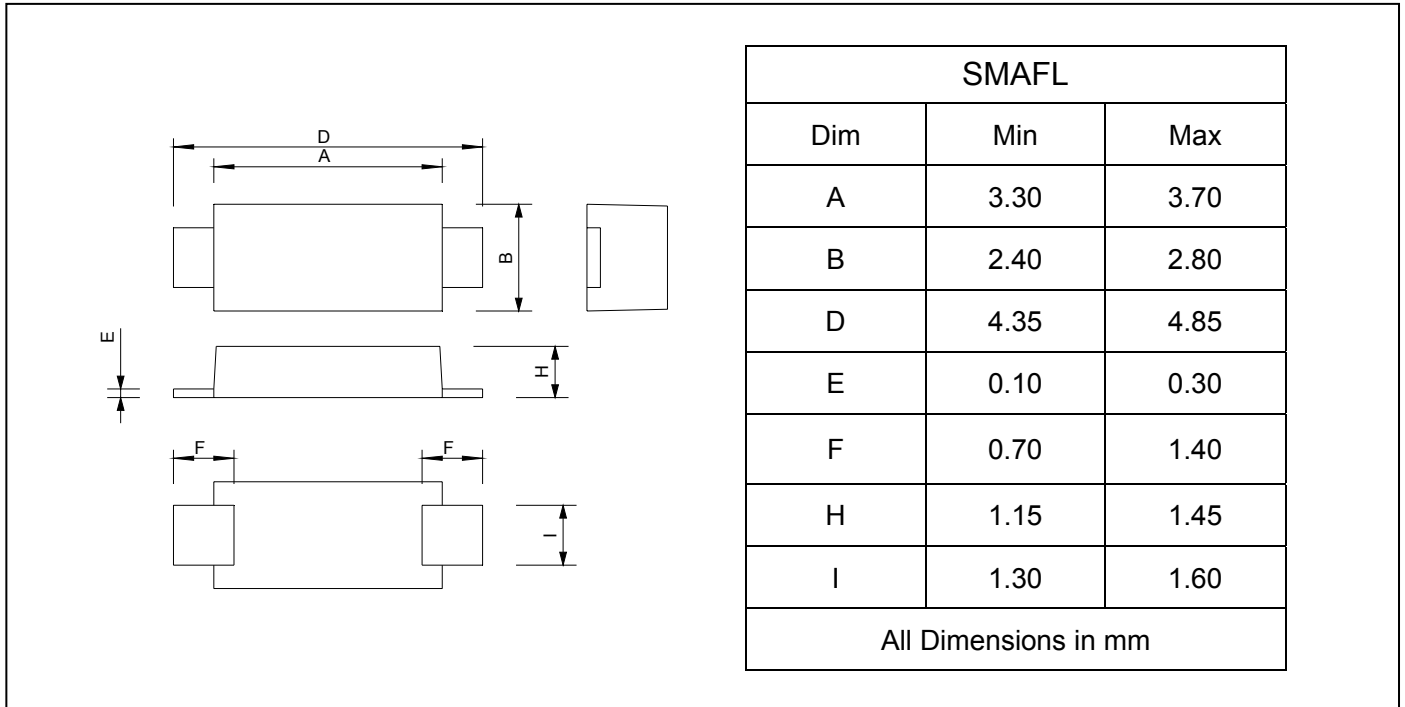
Electrical Characteristics (@TA = 25°C unless otherwise specified)

Characteristic	Symbol	M1FA	M2FA	M3FA	M4FA	M5FA	M6FA	M7FA	UNITS
Maximum instantaneous forward voltage at 1.0 A	V_F	1.1							V
Maximum reverse current at rated DC blocking voltage	I_R	5.0 50							μA

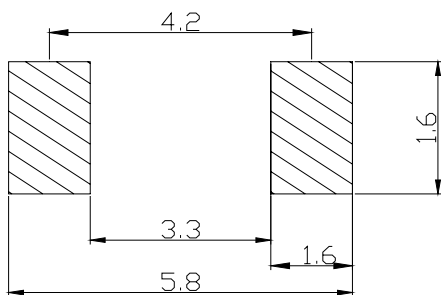
Surface Mount Rectifiers

M1FA--M7FA

PACKAGE OUTLINE DIMENSIONS



SOLDERING FOOTPRINT



Unit : mm

PACKAGE INFORMATION

Device	Package	Shipping
M1FA-M7FA	SMAFL	10000/Tape&Reel



Surface Mount Rectifiers

M1FA--M7FA

FIG.1 – FORWARD DERATING CURVE

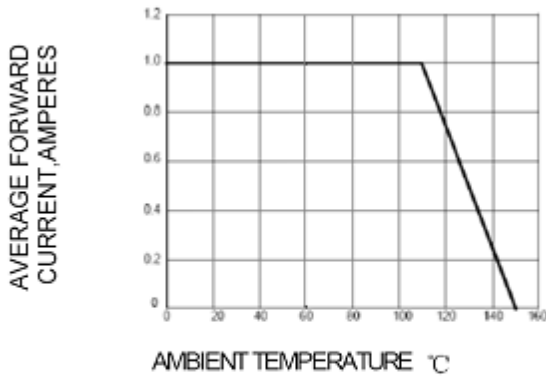


FIG.2 PEAK FORWARD SURGE CURRENT

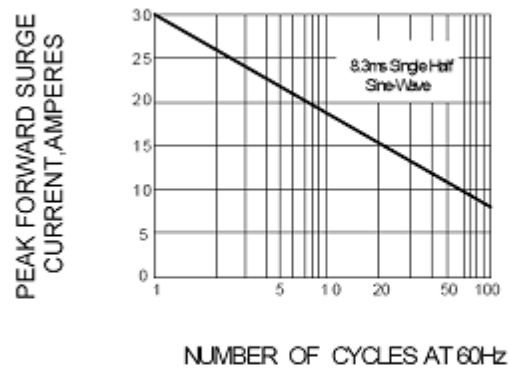


FIG.3 – TYPICAL FORWARD CHARACTERISTICS

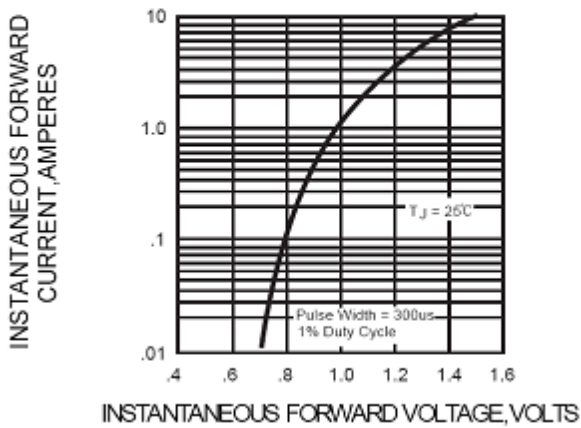


FIG.4 – TYPICAL REVERSE CHARACTERISTICS

