

**1. Part No. Expression:**

**S P I P Q I C 0 S – Bxxxx**

(a) (b) (c) (d)

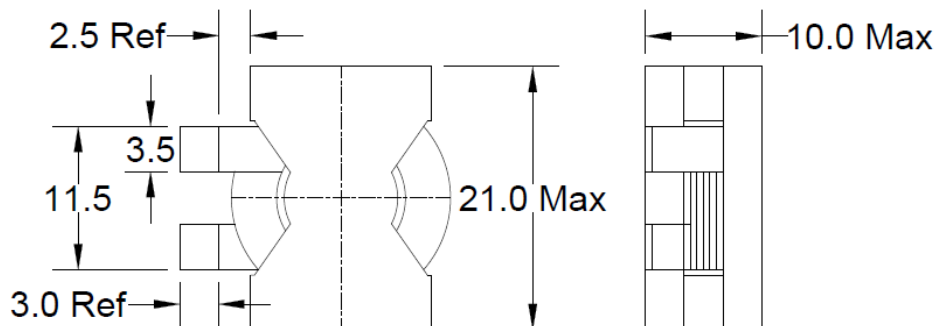
a) Series Code

b) Core Size

c) Type: SMD

d) Internal Control

**2. Configuration & Dimensions:**



**3. Schematic:**



**4. Features and Application**

- (a) Working Frequency : 500kHz
- (b) Inductance Range : 1uH ~ 100uH
- (c) Rated Current Range : 15A ~ 50A

**Remarks :** Please contact Superworld Sales Rep at [sales@superworld.com.sg](mailto:sales@superworld.com.sg) for custom inductors.