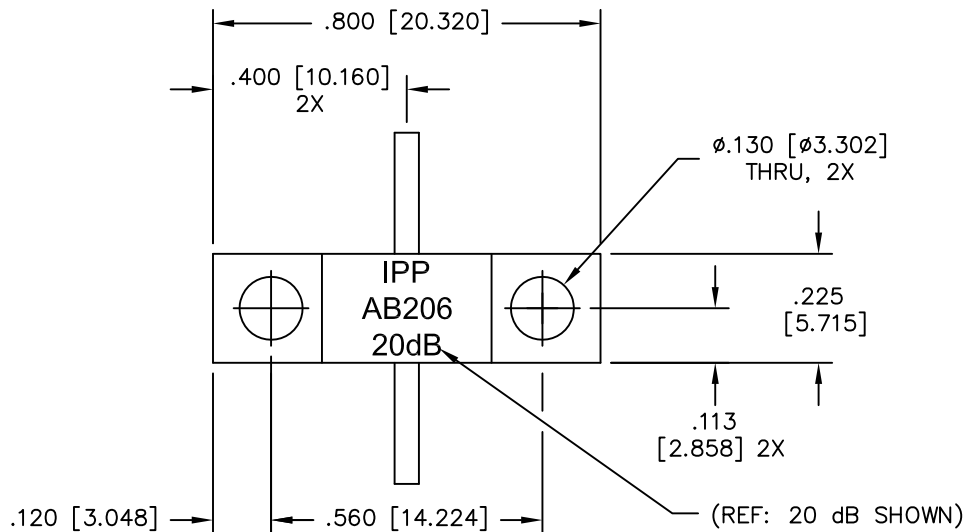
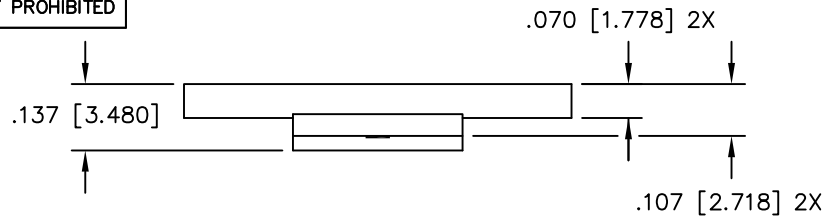


UNAUTHORIZED USE OF THIS
DRAWING IS STRICTLY PROHIBITED

DAR	REV	DESCRIPTION	APPVD	DATE
	A	INITIAL RELEASE	TJD	6-12

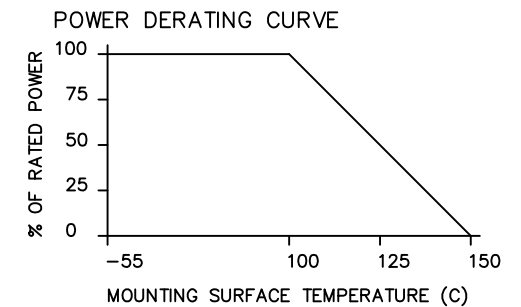


NOTES:

- LEAD MATERIAL: 99.99% PURE SILVER, .050 [1.270] WIDE x .005 [.127] THICK x .250 [6.350] MIN. LONG.
- SUBSTRATE MATERIAL: BeO COVER MATERIAL: Al₂O₃
- FLANGE MATERIAL: COPPER PLATING: NICKEL
- LEAD(S) WELDED TO SUBSTRATE.

ELECTRICAL SPECIFICATIONS

NOMINAL IMPEDANCE: 50 OHMS
 FREQUENCY: DC - 2.5 GHz.
 VSWR: 1.25:1
 INPUT POWER: 100 WATTS
 TEMPERATURE: -55°C TO 150°C



PART NO.	VALUE	TOLERANCE
IPP-AB206-2	2 dB	±0.50 dB
IPP-AB206-3	3 dB	±0.50 dB
IPP-AB206-4	4 dB	±0.50 dB
IPP-AB206-6	6 dB	±0.50 dB
IPP-AB206-8	8 dB	±0.75 dB
IPP-AB206-10	10 dB	±1.00 dB
IPP-AB206-20	20 dB	±1.50 dB

MATERIAL [2] [3]	DWN	DG	DATE	
	ENG	TJD	DATE 6/12	
FINISH [3]	MANUF	DATE	TITLE ATTENUATOR, 100 WATT, FLANGE	
TOLERANCE IN [MM] .XX ±.02 [.50] .XXX ±.010 [.254]	CAGE CODE: 437R2		SCALE	SIZE B
	SHEET	OF	SCALE	P/N IPP-AB206-XX
	1	1	4:1	REV. A