

RJ-45

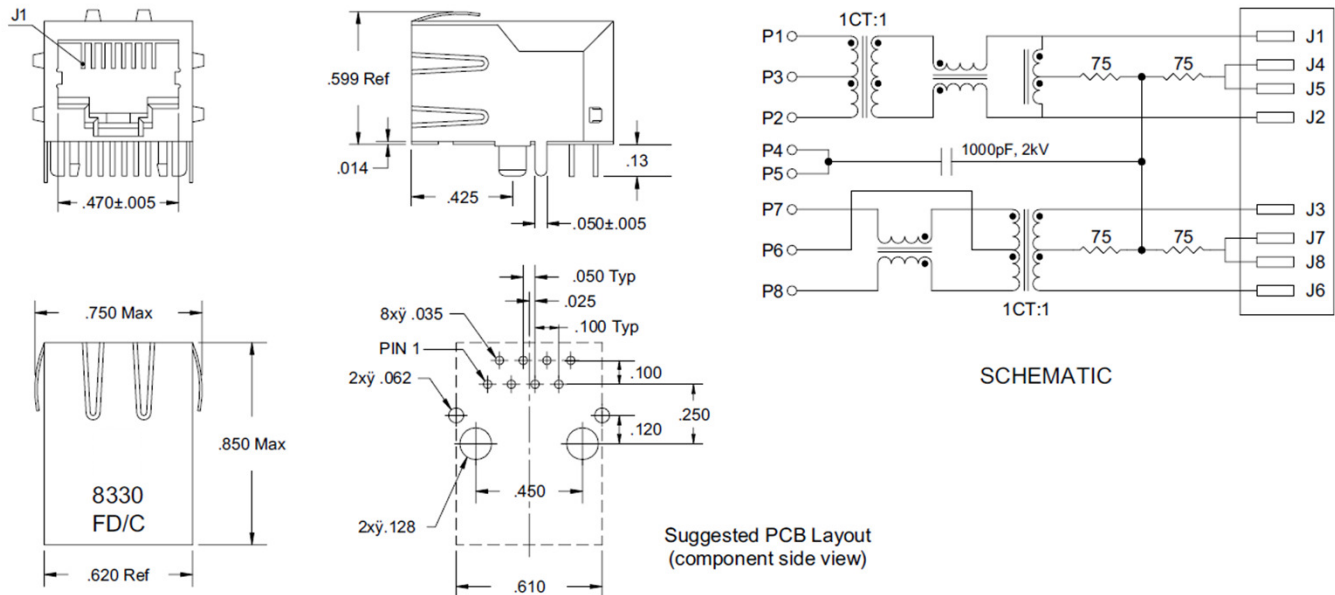
RJ-45 Connector with 100 Base-TX Magnetics

8330

- Meets OCL specifications of 350µH Min with 8mADC Bias
- Contact Plating: standard 6µ-inch selective gold plating
- Reduced EMI radiation and improved EMI performance
- Meets UL-94V0



MECHANICAL AND SCHEMATIC (All dimensions in inches)



UNLESS OTHERWISE SPECIFIED, ALL TOLERANCES ARE ±0.010

ELECTRICAL SPECIFICATION @ 25°C

Turns Ratio (±3%)	DCR (ΩMAX)	C _{w/w} ¹ (pF MAX)	L _L ² (µH MAX)	Return ³ Loss (dB MIN)			Insertion Loss (dB MAX)		Crosstalk (dB MIN)	CCMA (dB)	
(P1-P2):(J1-J2) (P7-P8):(J3-J6)	(J1-J2) (P7-P8)	(P7-P8) to (J3-J6) (P1-P2) to (J1-J2)	(P7-P8), Si J3+J6 (P1-P2), Si J1+J2	1-30 MHz	30-60 MHz	60-80 MHz	1-65 MHz	65-100 MHz	1-100 MHz	1-100 MHz	100-200 MHz
1CT:1	12	35	0.3	-18	-14	-12	-1.0	-1.1	-35	-45 Typ	-20 Min

INDUCTANCE (P1-P2) & (P7-P8): 350 µH @ 100 kHz, 0.1V, 8 mA DC Bias
 HI-POT (J1-J2) to (P1-P2) & (J3-J6) to (P7-P8): 1500 VAC @ 1 mA, 1 Sec

1. Interwinding Capacitance @ 1.0 MHz, 0.1 V
2. Leakage Inductance @ 1.0 MHz, 0.1 V
3. Return Loss: 100Ω load on J3-J6 and 100Ω load on J1-J2