

ATLANTIC VERSION TERMINATOR INTERFACE ADAPTER	PART NUMBER	REVISION	DESCRIPTION	FEED TYPE	APPLICATOR STYLE CONVERSION CHART								
					CONVERT TO	PART NUMBERS REQUIRED							
	2151725-1	L	FINE CRIMP HEIGHT ADJUST	MECHANICAL	PNEUMATIC FEED	2119950-1	1338685-1	5-18022-5	2119641-1	2119799-1	1722362-1		
					SERVO LATCH PLATE	2119951-1	-	8-2151725-5	1901094-3	-	2168400-6 (QUANTITY 2)		
					SMART APPLICATOR	2161326-1	-	8-2151725-4	-	-			
					DOUBLE ACTING	2119950-2	1338685-1	5-18022-5	-	2119799-1	1803430-1		
					MECHANICAL FEED	2119949-1	1338685-1	5-18022-5	2119653-1	-	-		
					SERVO LATCH PLATE	2119951-1	-	8-2151725-5	1901094-3	-	2168400-6 (QUANTITY 2)		
	2151725-2	L	FINE CRIMP HEIGHT ADJUST	PNEUMATIC	SERVO LATCH PLATE	2119951-1	-	8-2151725-5	1901094-3	-	-	-	
					SMART APPLICATOR	2161326-1	-	8-2151725-4	-	-	-		
					DOUBLE ACTING	2119950-2	1338685-1	5-18022-5	-	2119799-1	1803430-1		
					MECHANICAL FEED	2119949-1	1338685-1	5-18022-5	2119653-1	-	-		
					PNEUMATIC FEED	2119950-1	1338685-1	5-18022-5	2119641-1	2119799-1	1722362-1		
					DOUBLE ACTING	2119950-2	1338685-1	5-18022-5	-	2119799-1	1803430-1		
2151725-5	L	FINE CRIMP HEIGHT ADJUST	SERVO LATCH PLATE	MECHANICAL FEED	2119949-1	1338685-1	5-18022-5	2119653-1	-	-	-		
				PNEUMATIC FEED	2119950-1	1338685-1	5-18022-5	2119641-1	2119799-1	1722362-1			
				DOUBLE ACTING	2119950-2	1338685-1	5-18022-5	-	2119799-1	1803430-1			
2151725-6	L	NON-CRIMP HEIGHT ADJUST	SERVO LATCH PLATE	-	-	-	-	-	-	-	-		
				-	-	-	-	-	-	-	-		
2151725-7	L	FINE CRIMP HEIGHT ADJUST	NONE	-	-	-	-	-	-	-	-		
				-	-	-	-	-	-	-	-		
3-2151725-2	L	FINE CRIMP HEIGHT ADJUST	DOUBLE ACTING PNEUMATIC WITH SENSORS	MECHANICAL FEED	2119949-1	1338685-1	5-18022-5	2119653-1	-	-	-		
				PNEUMATIC FEED	2119950-1	1338685-1	5-18022-5	2119641-1	2119799-1	1722362-1			
				SERVO LATCH PLATE	2119951-1	-	8-2151725-5	1901094-3	-	2168400-6 (QUANTITY 2)			
7-2151725-7	L	CRIMP TOOLING KIT	-	-	-	-	-	-	-	-	-		

APPLICATOR DATA		
CRIMP	SIZE	TYPE
WIRE	1.35 mm [.053]	F
INSUL	1.55 mm [.061]	O
APPLICATOR INSTRUCTIONS 408-10389		

TERMINAL DATA: TE TERMINAL		TE CRIMP SPECIFICATION	
TERMINAL NAME: GENERATION Y, 0.64 STYLE TERMINAL			
WIRE STRIP LENGTH	INSULATION DIAMETER RANGE		
4.00-4.50 mm [1.57-.177 IN]	∅ 1.50-1.85 mm [.059-.073 IN]		
TERMINAL APPLICATION SPECIFICATION	114-13183		

TERMINALS APPLIED			
TE TERMINAL	TE TERMINAL	TE TERMINAL	TE TERMINAL
1438616-3	1642772-1	1924968-3	2098165-1
1438616-7	1642948-1	1949674-1	2098753-1
1456574-3	1924275-3	2035124-1	2098762-1
1456841-3	1924727-1	2035170-1	2138699-1
1456968-3	1-1924727-1	1-2035170-1	1-2138699-1
	1924955-3	2035334-3	

WIRE SIZE	CRIMP HEIGHT mm [INCH]	CRIMP HEIGHT REFERENCE SETTING
20 AWG OR 0.50mm2	0.95+/-0.05 [.037+/-0.002]	7.7
22 AWG OR 0.35mm2	0.90+/-0.05 [.035+/-0.002]	8.3

- 1 RECOMMENDED SPARE PARTS
- 2 GREASE BEARING SURFACES LIGHTLY
- 3 LUBRICATE DAILY PER THE APPLICATOR INSTRUCTION SHEET SUPPLIED WITH THE APPLICATOR.
- 4 APPLICATOR SPECIFIC DATA TO BE ENTERED INTO BLANK MEMORY CHIP AT ASSEMBLY. SEE BELOW FOR PART NUMBER:
 MECHANICAL FEED WITH "SMART APPLICATOR" CONVERSION: 8-2151725-4
 PNEUMATIC FEED WITH "SMART APPLICATOR" CONVERSION: 8-2151725-4
 SERVO FEED WITH "FINE CRIMP HEIGHT ADJUST": 8-2151725-5
 SERVO FEED WITH "NON-CRIMP HEIGHT ADJUST": 8-2151725-6
- 5 ADJUSTMENT OF THE STRIPPER MAY BE REQUIRED WHEN MOVING THE APPLICATOR BETWEEN BENCH AND LEADMAKER APPLICATIONS.
- 6 APPLY PART NUMBER 1-23419-5 LOCTITE TO THREADS OF ITEM 62. APPLY PART NUMBER 2-23419-6 LOCTITE TO THREADS OF ITEM 242. FOR -6 ONLY APPLY PART NUMBER 1-23419-5 LOCTITE TO THREADS OF ITEM 37.
- 7 GREASE THREADS, GROOVE AND O-RING ON ITEMS 35 & 252.
- 8 MAGNET, ITEM 166 MUST BE ORIENTED CORRECTLY IN ORDER TO PROPERLY ACTUATE THE COUNTER.
- 9 CRIMP HEIGHT REFERENCE SETTING WAS THE SETTING USED WHEN THE APPLICATOR WAS QUALIFIED AT THE FACTORY. ADJUSTMENT MAY BE NECESSARY WHEN RUNNING APPLICATOR IN THE FIELD.
- 10 SPARE FEED CAM STORAGE LOCATION REFER TO INSTRUCTION SHEET FOR ADDITIONAL INFORMATION.
- 11 TO CONVERT THE APPLICATOR TO A NON-CARRIER CUTTING STYLE, REMOVE ITEM 13 AND ATTACH TO THE LOCATION ON THE BACK SIDE OF THE HOUSING. REFER TO INSTRUCTION SHEET FOR ADDITIONAL INFORMATION.

- 12 WHEN ASSEMBLING -6 NON-CRIMP HEIGHT ADJUST APPLICATOR USE SHIM PACK 2119957-2 TO ALIGN APPLICATOR'S MAXIMUM WIRE CRIMP HEIGHT AT NORMAL TERMINATOR SHUT HEIGHT
- 13 TE TERMINAL YAZAKI TERMINAL
 1642772-1 7114-4618-02
 1642948-1 7116-4618-02
 1949674-1 7116-5231-08
- 14 THIS APPLICATOR IS EQUIPPED WITH THE DOUBLE ACTING PNEUMATIC FEED WITH SENSORS, AND IS APPLICATION SPECIFIC AND DOES NOT REQUIRE ITEMS 49 & 151.

-77	-32	-7	-6	-5	-2	-1	PART NO	DESCRIPTION	ITEM NO
-	1	-	-	-	-	-	1803430-1	AIR FEED MODULE	290
-	-	-	1	-	-	-	2119957-2	APPLICATOR SHIM PACK	260
-	1	1	-	1	1	1	8-21084-0	O-RING, .676 ID, .070 DIA. MAT.	252
-	-	-	-	-	1	-	2119640-1	PUSH ROD, AIR FEED	250
-	-	-	-	-	1	-	2079988-1	BUSHING, LCH5-12, MISUMI	249
-	-	-	-	-	1	-	2119641-1	FEED CAM, AIR FEED	248
-	1	1	-	1	1	1	2119798-1	DETENT PIN	247
-	1	1	-	1	1	1	1-22279-3	SPRING, COMPRESSION	246

ATLANTIC VERSION
 Shown on sheets 1 of 4 & 2 of 4
 (Pacific version shown on sheets 3 of 4 & 4 of 4)

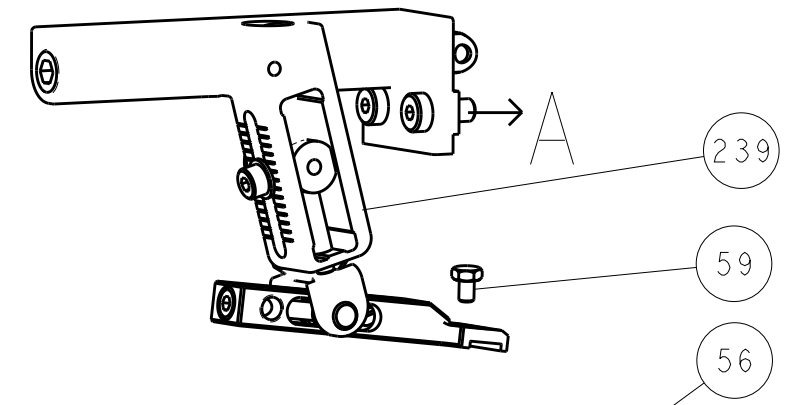
SET UP GAUGE	LOC	DIST	REVISIONS					
2119599-1	A	66	P	LTM	DESCRIPTION	DATE	OWN	APVD
			J1		ECR-16-009389	29JUN2016	MZ	KZ
			K		ECR-16-011276	05AUG2016	MZ	JDG
			K1		ECR-16-015428	7NOV2016	RS	LZ
			L		ECR-16-017085	02DEC2016	MZ	KZ

-	-	-	1	-	-	-	2119758-1	RAM, AMP STYLE, SIDE FEED, NON-ADJ.	245
-	1	1	1	1	1	1	2119082-8	CAM, SNAIL, INSULATION ADJUSTMENT	244
-	1	1	1	1	1	1	2079764-1	WASHER, WAVE SPRING, CREST-TO-CREST	243
-	1	1	1	1	1	1	2119083-1	RETAINER, INSULATION DIAL	242
-	1	1	1	1	1	1	7-18023-7	SCR, SKT HD CAP M3 X 4.0	241
-	-	-	2	2	-	-	2168400-6	SHCS, LOW HEAD, RoHS, M5 X 16	240
-	-	-	-	-	-	1	2119580-1	MECHANICAL FEED ASSEMBLY	239
-	-	-	-	-	1	-	1722362-1	AIR FEED MODULE	238
-	-	-	1	1	-	-	2119740-2	TAG, IDENTIFICATION	213
-	-	-	1	1	-	-	1901094-3	SPACER, FEEDER	198
-	1	1	1	1	1	1	1803129-1	PLATE, RETAINER	175
-	2	-	-	-	2	-	21045-3	RING, RETAIN, EXTERN, 3/16 CRESCENT	172
-	1	1	1	1	1	1	994969-1	MAGNET, RARE EARTH HIGH ENERGY	166
-	REF	REF	REF	REF	REF	REF	994970-2	COUNTER, MAGNETIC	164
-	1	-	-	-	1	-	240638-1	SPRING, FEED FINGER	163
-	1	-	-	-	1	-	3-23267-7	PIN, RETAIN, GRVD, 3/16 X .854	137
-	1	-	-	-	1	-	2119799-1	HOLDER, FEED FINGER, AF	136
-	-	-	REF	REF	-	-	SEE NOTE 4	MEMORY CHIP, PROGRAMMED	135
-	-	-	1	1	-	-	1633743-1	SERVO FEED LATCH ASM	133
-	1	1	1	1	1	1	1-18028-2	WASHER, FLAT, REG M4	119
-	-	-	REF	REF	-	-	2119944-1	FEED FINGER ASSEMBLY,SF	117
-	1	1	1	1	1	1	455888-8	SPACER, CRIMPER	82
-	1	1	1	1	1	1	455053-2	PLATE, RETAINING	81
-	1	1	1	1	1	1	2119956-1	DOCUMENTATION PACKAGE	71
-	1	1	1	1	1	1	2119791-5	DEPRESSOR, WIRE	70
-	1	1	-	-	1	1	2119740-1	TAG, IDENTIFICATION	67
-	2	2	2	2	2	2	2168078-1	SCREW, DRIVE, RH, RoHS, 2 x .188	66
-	1	1	-	-	1	1	2119793-1	LIMITER, ADJUSTMENT BOLT	63
-	3	3	-	3	3	3	992763-5	SCR, SET, SOC, CONE POINT, M3 x 4.0	62
-	1	1	1	1	1	1	2079383-4	SCR, BHSC, RoHS (M4 X 8)	60
-	1	-	-	-	1	1	5-18022-5	SCR, HEX HD CAP, M4 X 6.0	59
-	1	-	-	-	1	1	1338685-1	PAWL, FEED	56
-	1	1	1	1	1	1	18031-1	SCR, SET, CUP POINT M3 X 5.0	55
-	4	4	4	4	4	4	2168400-1	SHCS, LOW HEAD, RoHS, M4 X 12	54
-	2	2	2	2	2	2	1-2168083-2	SCR, SKT HD CAP, RoHS, M4 X 25	53
-	2	2	2	2	2	2	22278-9	SPRING, COMPRESSION	52
-	1	1	1	1	1	1	9-1338389-4	HOLD DOWN, TERMINAL	51
-	1	1	1	1	1	1	4-21028-0	PIN, SLOTTED SPRING .094 X .750	50
-	-	-	-	-	1	2	18023-9	SCR, SKT HD CAP M4 X 6.0	49
-	-	-	-	-	-	1	2119652-1	FEED CAM, PRE FEED	48
-	-	-	-	-	-	1	2119653-1	FEED CAM, POST FEED	47
-	1	1	1	1	1	1	2119656-9	APPLICATOR BASIC ASSEMBLY, SF	46
-	1	1	-	-	1	1	2119370-1	RAM, AMP STYLE, SIDE FEED	44
-	1	1	1	1	1	1	2079383-7	SCR, BHSC, RoHS (M8 X 25)	41
-	1	1	-	-	1	1	2119645-1	DISC, NUMBERED FA WIRE ADJUSTMENT	40
-	1	1	-	-	1	1	2119957-1	APPLICATOR SHIM PACK	39
-	1	1	1	1	1	1	2119644-1	RAM WASHER, PRECISION	38
-	1	1	1	1	1	1	2119085-1	FA HEAD, ATLANTIC STYLE	37
-	1	1	-	-	1	1	2119092-1	BOLT, ADJUSTMENT	35
-	1	1	1	1	1	1	3-1752356-4	SUPPORT, TERMINAL	34
-	2	2	2	2	2	2	2079383-5	SCR, BHSC, RoHS (M4 X 20)	33
-	1	1	1	1	1	1	2161328-1	HEX HEAD, FLANGED, M5 x 8mm LONG	32
-	1	1	1	1	1	1	1320908-3	SPACER, STRIP GUIDE	30
-	1	1	1	1	1	1	2119959-4	ASSEMBLY, STRIP GUIDE	29
-	1	1	1	1	1	1	240792-1	DRAG, TERMINAL	25
-	1	1	1	1	1	1	1320928-2	STRIP GUIDE	24
-	1	1	1	1	1	1	2168083-2	SCR, SKT HD CAP, RoHS, M4 X 8.0	21
-	1	1	1	1	1	1	1-18028-2	WASHER, FLAT, REG M4	20
-	1	1	1	1	1	1	2119533-1	STRIPPER, SIDE FEED	19
-	1	1	1	1	1	1	455052-3	CARRIER, HOLD DOWN	18
-	1	1	1	1	1	1	2119806-1	INSERT, SHEAR	13
-	1	1	1	1	1	1	3-22280-3	SPRING, COMPRESSION	12
-	1	1	1	1	1	1	1-356885-3	STOP, SHEAR	11
-	1	1	1	1	1	1	2119805-1	SHEAR HOLDER, FRONT	10
-	1	1	1	1	1	1	1803095-6	FLOATING SHEAR, FRONT	9
-	1	1	1	1	1	1	4-1633621-9	ANVIL, COMBINATION	8
-	-	-	-	-	-	-	-	-	7
-	-	-	-	-	-	-	-	-	6
-	1	1	1	1	1	1	2119757-3	DEPRESSOR, SHEAR	5
-	1	1	1	1	1	1	238011-4	BLOCK, CRIMPER SPACER	4
-	1	1	1	1	1	1	7-1803019-9	CRIMPER, INSULATION O	3
-	1	1	1	1	1	1	455888-2	SPACER, CRIMPER	2
-	1	1	1	1	1	1	1803364-3	CRIMPER, WIRE PREMIUM	1

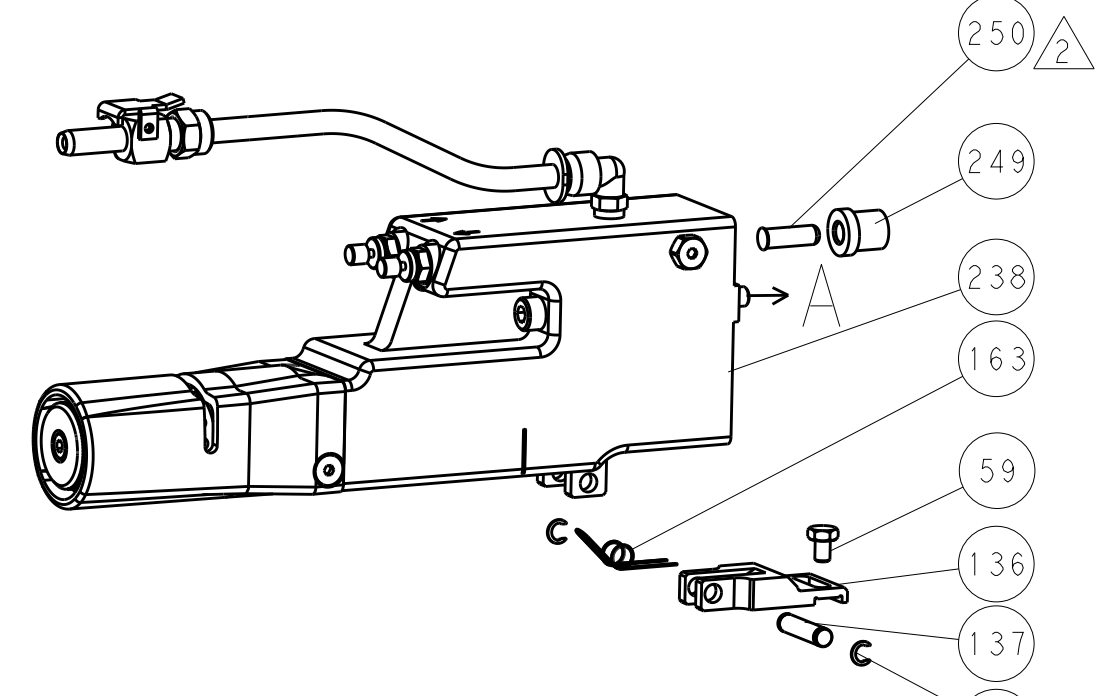
DIMENSIONS:		TOLERANCES UNLESS OTHERWISE SPECIFIED:		MATERIAL:		FINISH:	
mm	0 PLC	±					
	1 PLC	±					
	2 PLC	±					
	3 PLC	±					
	4 PLC	±					
	ANGLES	±					

LOC		DIST		REVISIONS			
A	66	P	LTM	DESCRIPTION	DATE	DWN	APVD
		-		SEE SHEET 1			

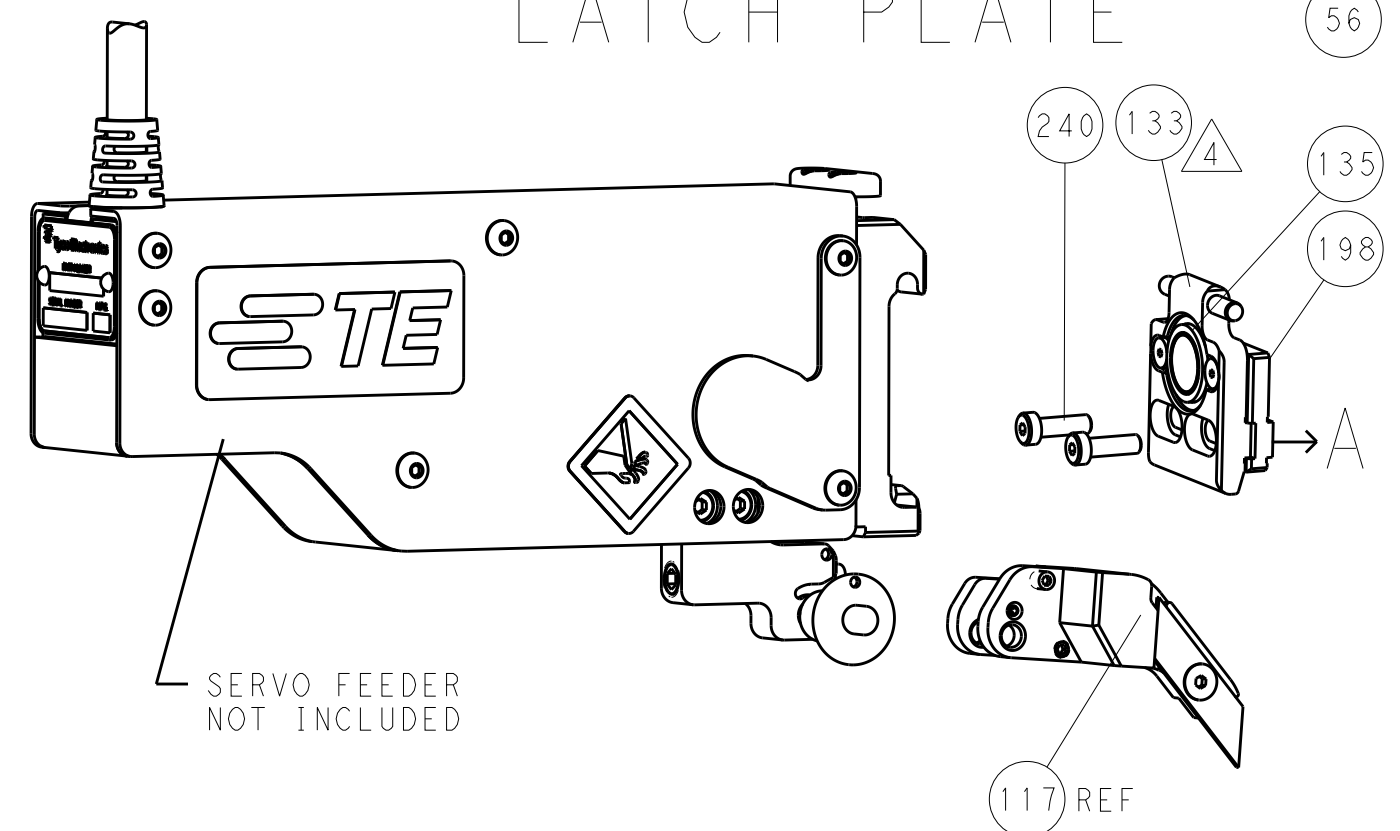
FEED TYPE MECHANICAL



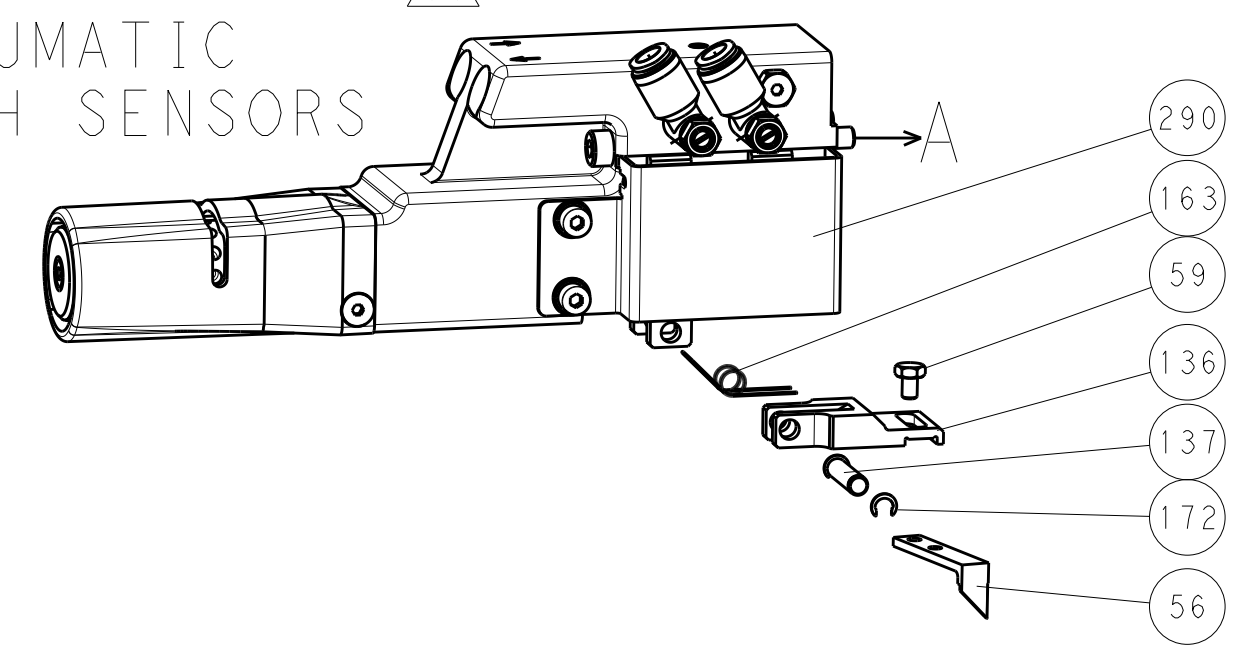
PNEUMATIC



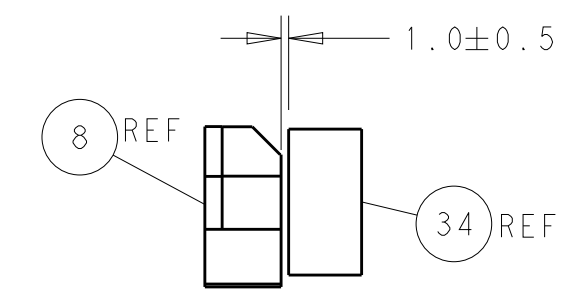
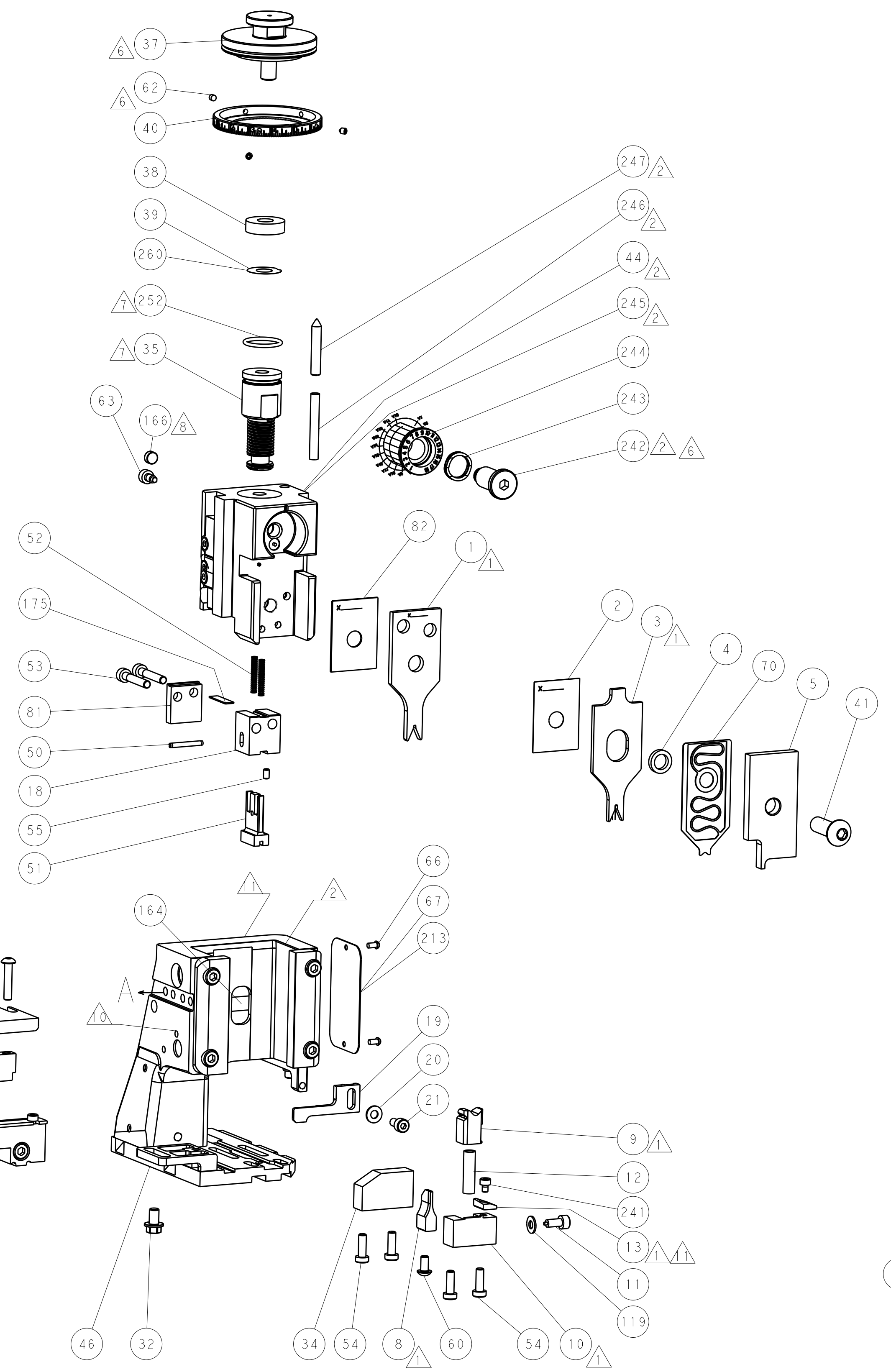
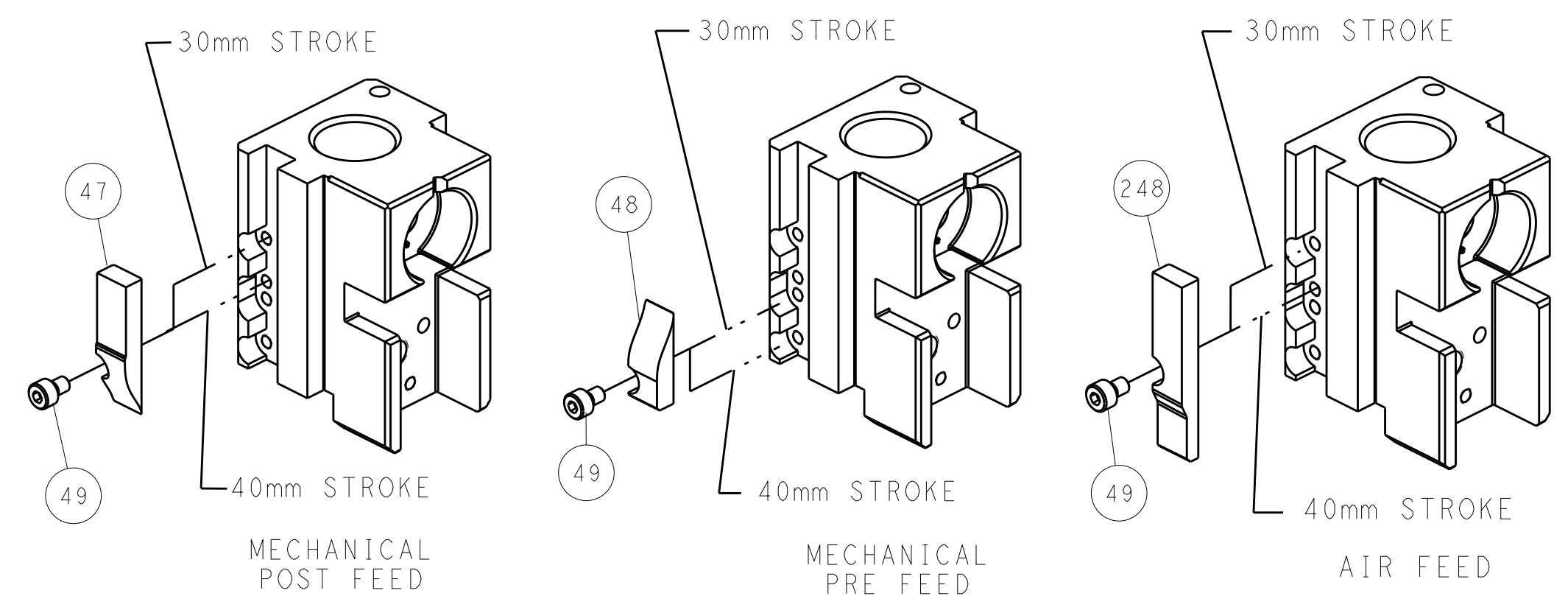
SERVO LATCH PLATE



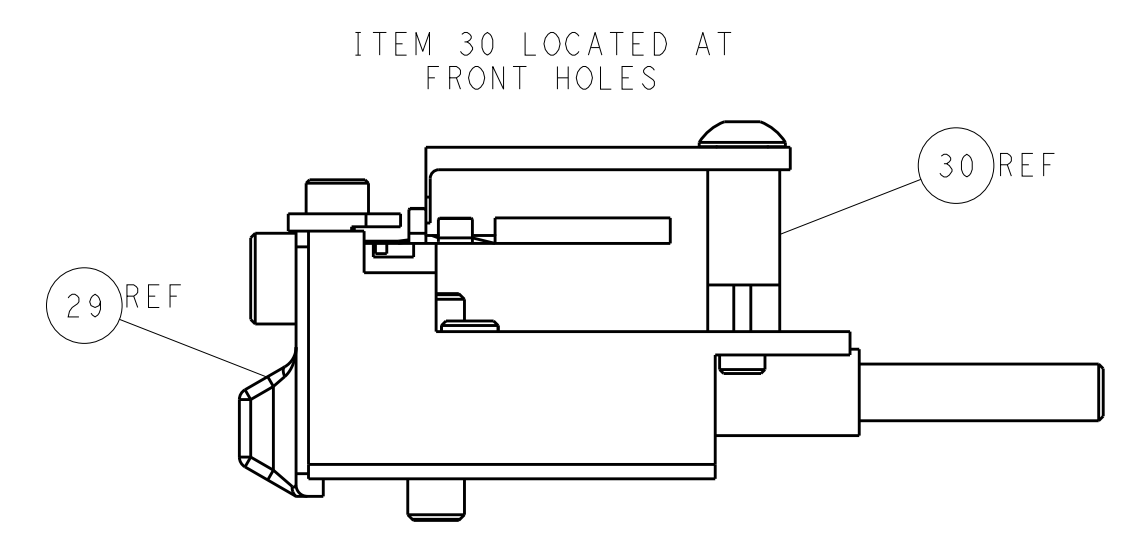
DOUBLE ACTING PNEUMATIC WITH SENSORS



CAM POSITIONS



TERMINAL SUPPORT LOCATION



FEED TRACK POSITION GUIDE BY INSULATION BARREL

ATLANTIC VERSION
 Shown on sheets 1 of 4 & 2 of 4
 (Pacific version shown on sheets 3 of 4 & 4 of 4)

DIMENSIONS:		TOLERANCES UNLESS OTHERWISE SPECIFIED:		DWN C. MOYER 31 JUL 2012		TE Connectivity	
mm	0 PLC ±	1 PLC ±	2 PLC ±	3 PLC ±	4 PLC ±	Harrisburg, PA 17105-3608	
MATERIAL:		FINISH:		APVD T. ELBIN 31 JUL 2012		NAME Ocean Side Feed Applicator	
				PRODUCT SPEC		SIZE CAGE CODE DRAWING NO RESTRICTED TO	
				APPLICATION SPEC		A11 00779 ©=2151725	
				WEIGHT		SCALE 1:2 SHEET 2 OF 4 REV L	
				CUSTOMER DRAWING			

PACIFIC VERSION TERMINATOR INTERFACE ADAPTER	PART NUMBER	REVISION	DESCRIPTION	FEED TYPE	APPLICATOR STYLE CONVERSION CHART						
					CONVERT TO	PART NUMBERS REQUIRED					
						2119950-1	1338685-1	5-18022-5	2119641-2	2119799-1	1722362-1
	2-2151725-1	L	FINE CRIMP HEIGHT ADJUST	MECHANICAL	PNEUMATIC FEED	2119950-1	1338685-1	5-18022-5	2119641-2	2119799-1	1722362-1
					SERVO LATCH PLATE	2119951-1	-	8-2151725-5	1901094-3	-	2168400-6 (QUANTITY 2)
					SMART APPLICATOR	2161326-1	-	8-2151725-4	-	-	-
	2-2151725-2	L	FINE CRIMP HEIGHT ADJUST	PNEUMATIC	DOUBLE ACTING	2119950-2	1338685-1	5-18022-5	-	2119799-1	1803430-1
					MECHANICAL FEED	2119949-1	1338685-1	5-18022-5	2119653-2	-	-
					SERVO LATCH PLATE	2119951-1	-	8-2151725-5	1901094-3	-	2168400-6 (QUANTITY 2)
	2-2151725-5	L	FINE CRIMP HEIGHT ADJUST	SERVO LATCH PLATE	SMART APPLICATOR	2161326-1	-	8-2151725-4	-	-	-
					DOUBLE ACTING	2119950-2	1338685-1	5-18022-5	-	2119799-1	1803430-1
					MECHANICAL FEED	2119949-1	1338685-1	5-18022-5	2119653-2	-	-
	2-2151725-7	L	FINE CRIMP HEIGHT ADJUST	NONE	PNEUMATIC FEED	2119950-1	1338685-1	5-18022-5	2119641-2	2119799-1	1722362-1
DOUBLE ACTING					2119950-2	1338685-1	5-18022-5	-	2119799-1	1803430-1	
4-2151725-2	L	FINE CRIMP HEIGHT ADJUST	DOUBLE ACTING PNEUMATIC WITH SENSORS	MECHANICAL FEED	2119949-1	1338685-1	5-18022-5	2119653-2	-	2168400-6 (QUANTITY 2)	
				PNEUMATIC FEED	2119950-1	1338685-1	5-18022-5	2119641-2	2119799-1	1722362-1	
				SERVO LATCH PLATE	2119951-1	-	8-2151725-5	1901094-3	-	2168400-6 (QUANTITY 2)	
7-2151725-7	L	CRIMP TOOLING KIT	-	-	-	-	-	-	-	-	

APPLICATOR DATA		
CRIMP	SIZE	TYPE
WIRE	1.35 mm [.053]	F
INSUL	1.55 mm [.061]	O

APPLICATOR INSTRUCTIONS 408-10389

TERMINAL DATA: TE TERMINAL		TE CRIMP SPECIFICATION	
TERMINAL NAME: GENERATION Y, 0.64 STYLE TERMINAL			
WIRE STRIP LENGTH		INSULATION DIAMETER RANGE	
4.00-4.50 mm [1.57-.177 IN]		1.50-1.85 mm [0.059-.073 IN]	
TERMINAL APPLICATION SPECIFICATION	114-13183		

TERMINALS APPLIED			
TE TERMINAL	TE TERMINAL	TE TERMINAL	TE TERMINAL
1438616-3	1642772-1	1924968-3	2098165-1
1438616-7	1642948-1	1949674-1	2098753-1
1456574-3	1924275-3	2035124-1	2098762-1
1456841-3	1924727-1	2035170-1	2138699-1
1456968-3	1-1924727-1	1-2035170-1	1-2138699-1
	1924955-3	2035334-3	

WIRE SIZE	CRIMP HEIGHT mm [INCH]	CRIMP HEIGHT REFERENCE SETTING
20 AWG OR 0.50mm2	0.95+/-0.05 [0.037+/-0.002]	7.7
22 AWG OR 0.35mm2	0.90+/-0.05 [0.035+/-0.002]	8.3

- RECOMMENDED SPARE PARTS
- GREASE BEARING SURFACES LIGHTLY
- LUBRICATE DAILY PER THE APPLICATOR INSTRUCTION SHEET SUPPLIED WITH THE APPLICATOR.
- APPLICATOR SPECIFIC DATA TO BE ENTERED INTO BLANK MEMORY CHIP AT ASSEMBLY. SEE BELOW FOR PART NUMBER:
MECHANICAL FEED WITH "SMART APPLICATOR" CONVERSION: 8-2151725-4
PNEUMATIC FEED WITH "SMART APPLICATOR" CONVERSION: 8-2151725-4
SERVO FEED WITH "FINE CRIMP HEIGHT ADJUST": 8-2151725-5
- ADJUSTMENT OF THE STRIPPER MAY BE REQUIRED WHEN MOVING THE APPLICATOR BETWEEN BENCH AND LEADMAKER APPLICATIONS.
- APPLY PART NUMBER 1-23419-5 LOCTITE TO THREADS OF ITEM 62. APPLY PART NUMBER 2-23419-6 LOCTITE TO THREADS OF ITEM 242.
- GREASE THREADS, GROOVE AND O-RING ON ITEMS 139 & 152.
- MAGNET MUST BE ORIENTED CORRECTLY IN ORDER TO PROPERLY ACTUATE THE COUNTER.
- CRIMP HEIGHT REFERENCE SETTING WAS THE SETTING USED WHEN THE APPLICATOR WAS QUALIFIED AT THE FACTORY. ADJUSTMENT MAY BE NECESSARY WHEN RUNNING APPLICATOR IN THE FIELD.
- SPARE FEED CAM STORAGE LOCATION REFER TO INSTRUCTION SHEET FOR ADDITIONAL INFORMATION.
- TO CONVERT THE APPLICATOR TO A NON-CARRIER CUTTING STYLE, REMOVE ITEM 13 AND ATTACH TO THE LOCATION ON BACK SIDE OF THE HOUSING. REFER TO INSTRUCTION SHEET FOR ADDITIONAL INFORMATION.
- TE TERMINAL YAZAKI TERMINAL
1642772-1 7114-4618-02
1642948-1 7116-4618-02
1949674-1 7116-5231-08

THIS APPLICATOR IS EQUIPPED WITH THE DOUBLE ACTING PNEUMATIC FEED WITH SENSORS, AND IS APPLICATION SPECIFIC AND DOES NOT REQUIRE ITEMS 49 & 151.

***WARNING**
ON INSTALLATION, SET WIRE DISC, ITEM 40 TO LARGEST WIRE SIZE SETTING. USE OF SETTINGS BELOW MINIMUM REQUIRED CRIMP HEIGHT SETTING WILL CAUSE DAMAGE TO CRIMP TOOLING.

ITEM NO	DESCRIPTION	ITEM NO
1803430-1	AIR FEED MODULE	290
2119782-1	FINE ADJUST HEAD ASM, PACIFIC STYLE	251
2119640-1	PUSH ROD, AIR FEED	250
2079988-1	BUSHING, LCH5-12, MISUMI	249
1-22279-3	SPRING, COMPRESSION	246
2119082-8	CAM, SNAIL, INSULATION ADJUSTMENT	244
-77	PART NO	DESCRIPTION

PACIFIC VERSION
Shown on sheets 3 of 4 & 4 of 4
(Atlantic version shown on sheets 1 of 4 & 2 of 4)

SET UP GAUGE	LOC	DIST	REVISIONS			
2119599-1	A	66	REV	DATE	BY	APPV
			-	SEE SHEET 1		

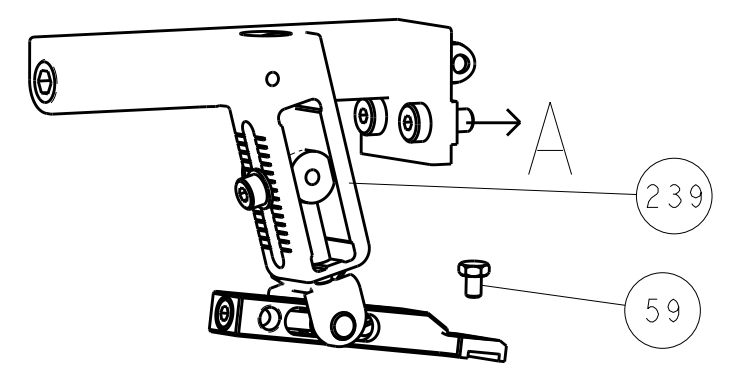
2079764-1	1	1	1	1	1	2079764-1	WASHER, WAVE SPRING, CREST-TO-CREST	243
2119083-1	1	1	1	1	1	2119083-1	RETAINER, INSULATION DIAL	242
7-18023-7	1	1	1	1	1	7-18023-7	SCR, SKT HD CAP M3 X 4.0	241
2168400-6	2	-	-	-	-	2168400-6	SHCS, LOW HEAD, RoHS, M5 X 16	240
2119580-1	-	-	-	-	1	2119580-1	MECHANICAL FEED ASSEMBLY	239
1722362-1	-	-	-	-	1	1722362-1	AIR FEED MODULE	238
2119740-2	-	-	-	-	1	2119740-2	TAG IDENTIFICATION	213
1901094-3	-	-	-	-	1	1901094-3	SPACER, FEEDER	198
1803129-1	1	1	1	1	1	1803129-1	PLATE, RETAINER	175
21045-3	-	-	-	-	2	21045-3	RING, RETAIN, EXTERN, 3/16 CRESCENT	172
994969-1	1	1	1	1	1	994969-1	MAGNET, RARE EARTH HIGH ENERGY	166
994970-2	REF	REF	REF	REF	REF	994970-2	COUNTER, MAGNETIC	164
240638-1	-	-	-	-	1	240638-1	SPRING, FEED FINGER	163
8-21084-1	1	1	1	1	1	8-21084-1	O-RING, .801 ID, .070 DIA. MAT.	152
2119641-2	-	-	-	-	1	2119641-2	FEED CAM, AIR FEED	151
2119798-2	1	1	1	1	1	2119798-2	DETENT PIN	145
2079383-8	1	1	1	1	1	2079383-8	SCR, BHSC, RoHS (M4 X 16)	144
2168400-5	4	4	4	4	4	2168400-5	SHCS, LOW HEAD, RoHS, M4 X 20	143
2119653-2	-	-	-	-	1	2119653-2	FEED CAM, POST FEED	142
1-2119656-0	1	1	1	1	1	1-2119656-0	APPLICATOR BASIC ASSEMBLY, SF	141
2119650-1	1	1	1	1	1	2119650-1	RAM, ASIAN STYLE, SIDE FEED	140
2119092-2	1	1	1	1	1	2119092-2	BOLT, ADJUSTMENT	139
3-23627-7	-	-	-	-	1	3-23627-7	PIN, RETAIN, GRVD, 3/16 X .854	137
2119799-1	-	-	-	-	1	2119799-1	HOLDER, FEED FINGER, AF	136
SEE NOTE 4	REF	REF	REF	REF	REF	SEE NOTE 4	MEMORY CHIP, PROGRAMMED	135
1633743-1	-	-	-	-	1	1633743-1	SERVO FEED LATCH ASM	133
1-18028-2	1	1	1	1	1	1-18028-2	WASHER, FLAT, REG M4	119
2119944-1	REF	REF	REF	REF	REF	2119944-1	FEED FINGER ASSEMBLY, SF	117
455888-8	1	1	1	1	1	455888-8	SPACER, CRIMPER	82
455053-2	1	1	1	1	1	455053-2	PLATE, RETAINING	81
2119956-1	1	1	1	1	1	2119956-1	DOCUMENTATION PACKAGE	71
2119791-5	1	1	1	1	1	2119791-5	DEPRESSOR, WIRE	70
2119740-1	1	1	1	1	1	2119740-1	TAG IDENTIFICATION	67
2168078-1	2	2	2	2	2	2168078-1	SCREW, DRIVE, RH, RoHS, 2 x .188	66
2119793-1	1	1	1	1	1	2119793-1	LIMITER, ADJUSTMENT BOLT	63
992763-5	3	3	3	3	3	992763-5	SCR, SET, SOC, CONE POINT, M3 X 4.0	62
5-18022-5	-	-	-	-	1	5-18022-5	SCR, HEX HD CAP, M4 X 6.0	59
1338685-1	-	-	-	-	1	1338685-1	PAWL, FEED	56
18031-1	1	1	1	1	1	18031-1	SCR, SET, CUP POINT M3 X 5.0	55
1-2168083-2	2	2	2	2	2	1-2168083-2	SCR, SKT HD CAP, RoHS, M4 X 25	53
22278-9	2	2	2	2	2	22278-9	SPRING, COMPRESSION	52
9-1338389-4	1	1	1	1	1	9-1338389-4	HOLD DOWN, TERMINAL	51
4-21028-0	1	1	1	1	1	4-21028-0	PIN, SLOTTED SPRING .094 X .750	50
18023-9	-	-	-	-	1	18023-9	SCR, SKT HD CAP M4 X 6.0	49
2119652-1	-	-	-	-	2	2119652-1	FEED CAM, PRE FEED	48
2079383-7	1	1	1	1	1	2079383-7	SCR, BHSC, RoHS (M8 X 25)	41
2119645-1	1	1	1	1	1	2119645-1	DISC, NUMBERED FA WIRE ADJUSTMENT	40
2119957-1	1	1	1	1	1	2119957-1	APPLICATOR SHIM PACK	39
2119644-1	1	1	1	1	1	2119644-1	RAM WASHER, PRECISION	38
3-1752356-4	1	1	1	1	1	3-1752356-4	SUPPORT, TERMINAL	34
2079383-5	2	2	2	2	2	2079383-5	SCR, BHSC, RoHS (M4 X 20)	33
2161328-1	1	1	1	1	1	2161328-1	HEX HEAD, FLANGED, M5 X 8mm LONG	32
1320908-3	1	1	1	1	1	1320908-3	SPACER, STRIP GUIDE	30
2119959-4	1	1	1	1	1	2119959-4	ASSEMBLY, STRIP GUIDE	29
240792-1	1	1	1	1	1	240792-1	DRAG, TERMINAL	25
1320928-2	1	1	1	1	1	1320928-2	STRIP GUIDE	24
2168083-2	1	1	1	1	1	2168083-2	SCR, SKT HD CAP, RoHS, M4 X 8.0	21
1-18028-2	1	1	1	1	1	1-18028-2	WASHER, FLAT, REG M4	20
2119533-1	1	1	1	1	1	2119533-1	STRIPPER, SIDE FEED	19
455052-3	1	1	1	1	1	455052-3	CARRIER, HOLD DOWN	18
2119806-1	1	1	1	1	1	2119806-1	INSERT, SHEAR	13
3-22280-3	1	1	1	1	1	3-22280-3	SPRING, COMPRESSION	12
1-356885-3	1	1	1	1	1	1-356885-3	STOP, SHEAR	11
2119805-1	1	1	1	1	1	2119805-1	SHEAR HOLDER, FRONT	10
1803095-6	1	1	1	1	1	1803095-6	FLOATING SHEAR, FRONT	9
4-1633621-9	1	1	1	1	1	4-1633621-9	ANVIL, COMBINATION	8
-	-	-	-	-	-	-	-	7
-	-	-	-	-	-	-	-	6
2119757-3	1	1	1	1	1	2119757-3	DEPRESSOR, SHEAR	5
238011-4	1	1	1	1	1	238011-4	BLOCK, CRIMPER SPACER	4
7-1803019-9	1	1	1	1	1	7-1803019-9	CRIMPER, INSULATION O	3
455888-2	1	1	1	1	1	455888-2	SPACER, CRIMPER	2
1803364-3	1	1	1	1	1	1803364-3	CRIMPER, WIRE PREMIUM	1

DIMENSIONS:		TOLERANCES UNLESS OTHERWISE SPECIFIED:		DWN	
mm	0 PLC ±	1 PLC ±	2 PLC ±	3 PLC ±	4 PLC ±
	ANGLES ±	FINISH			
MATERIAL		FINISH		WEIGHT	
CUSTOMER DRAWING		SCALE		SHEET	

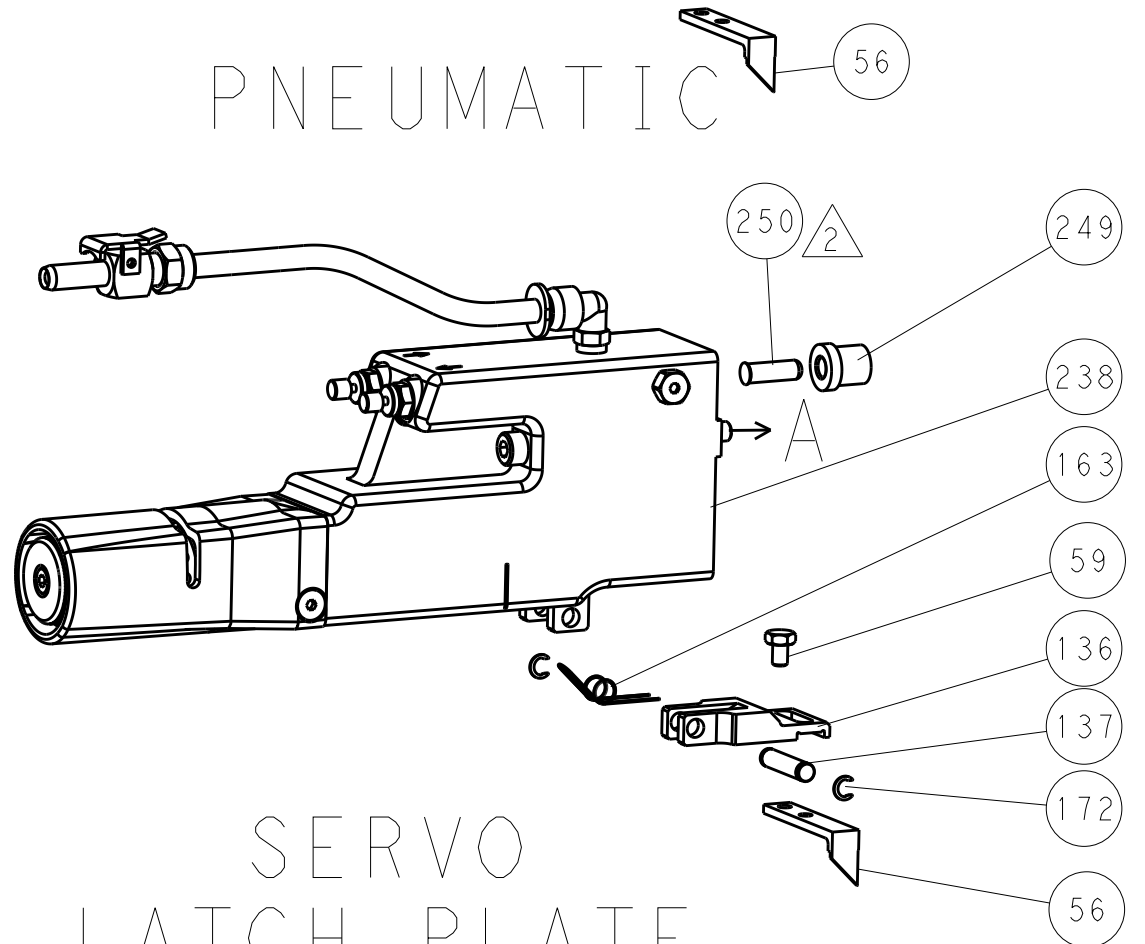
TE Connectivity Harrisburg, PA 17105-3608
Ocean Side Feed Applicator
A1 00779 ©=2151725
SCALE 1:2 SHEET 3 of 4 REV L

REVISONS		DATE	OWN	APVD
LOC	DIST			
A	66			
P	LTM	DESCRIPTION		
		SEE SHEET 1		

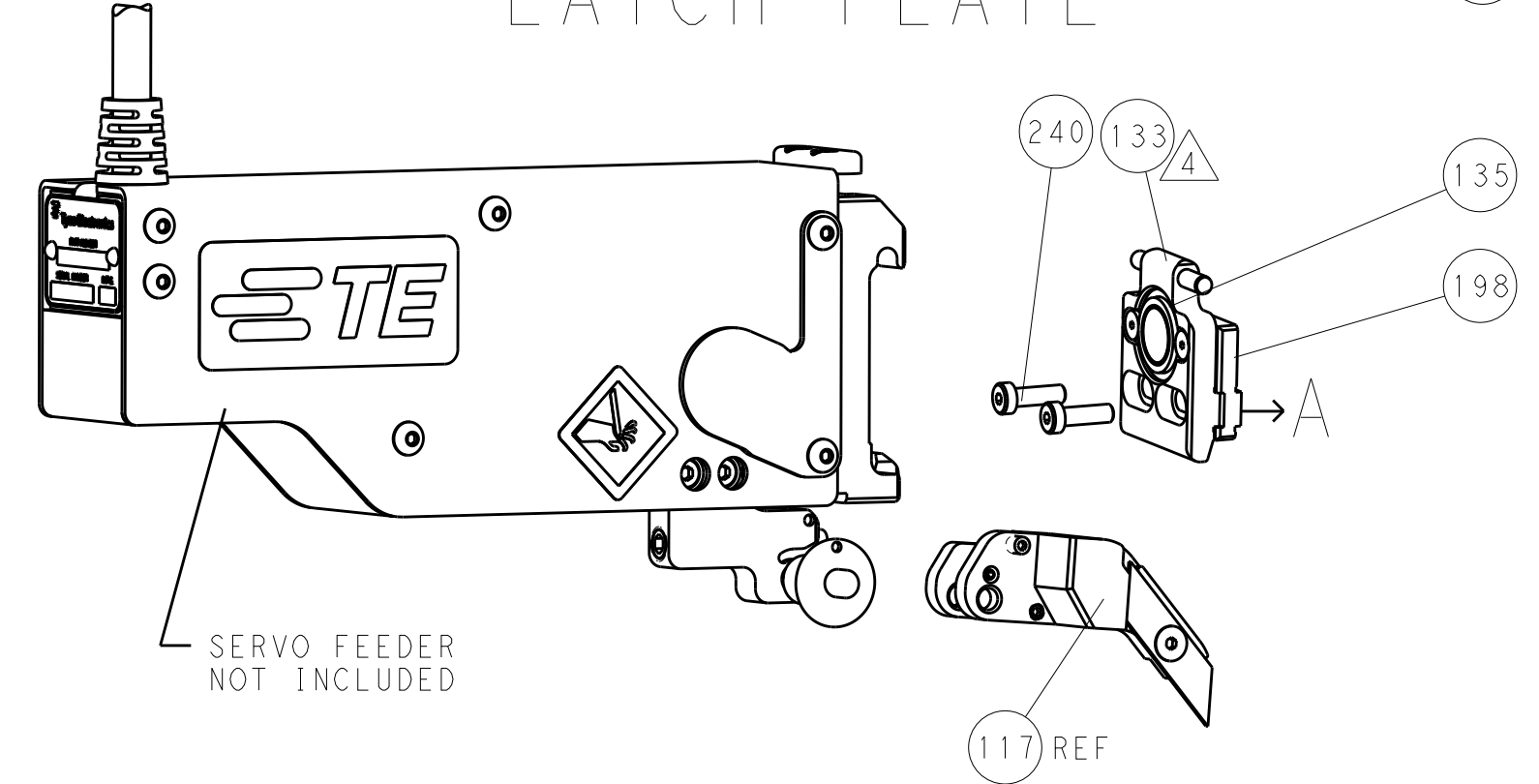
FEED TYPE MECHANICAL



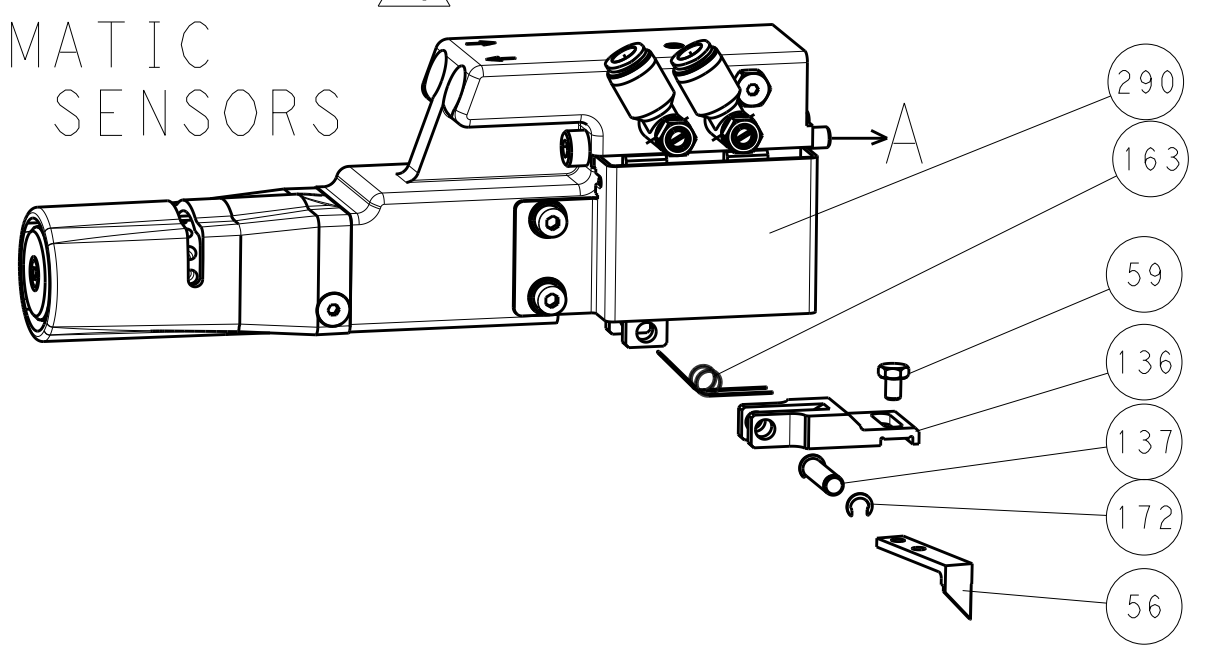
PNEUMATIC



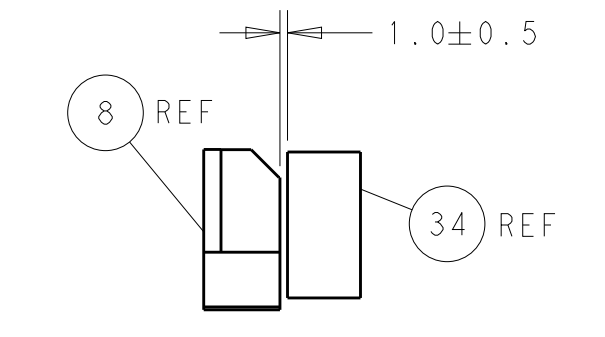
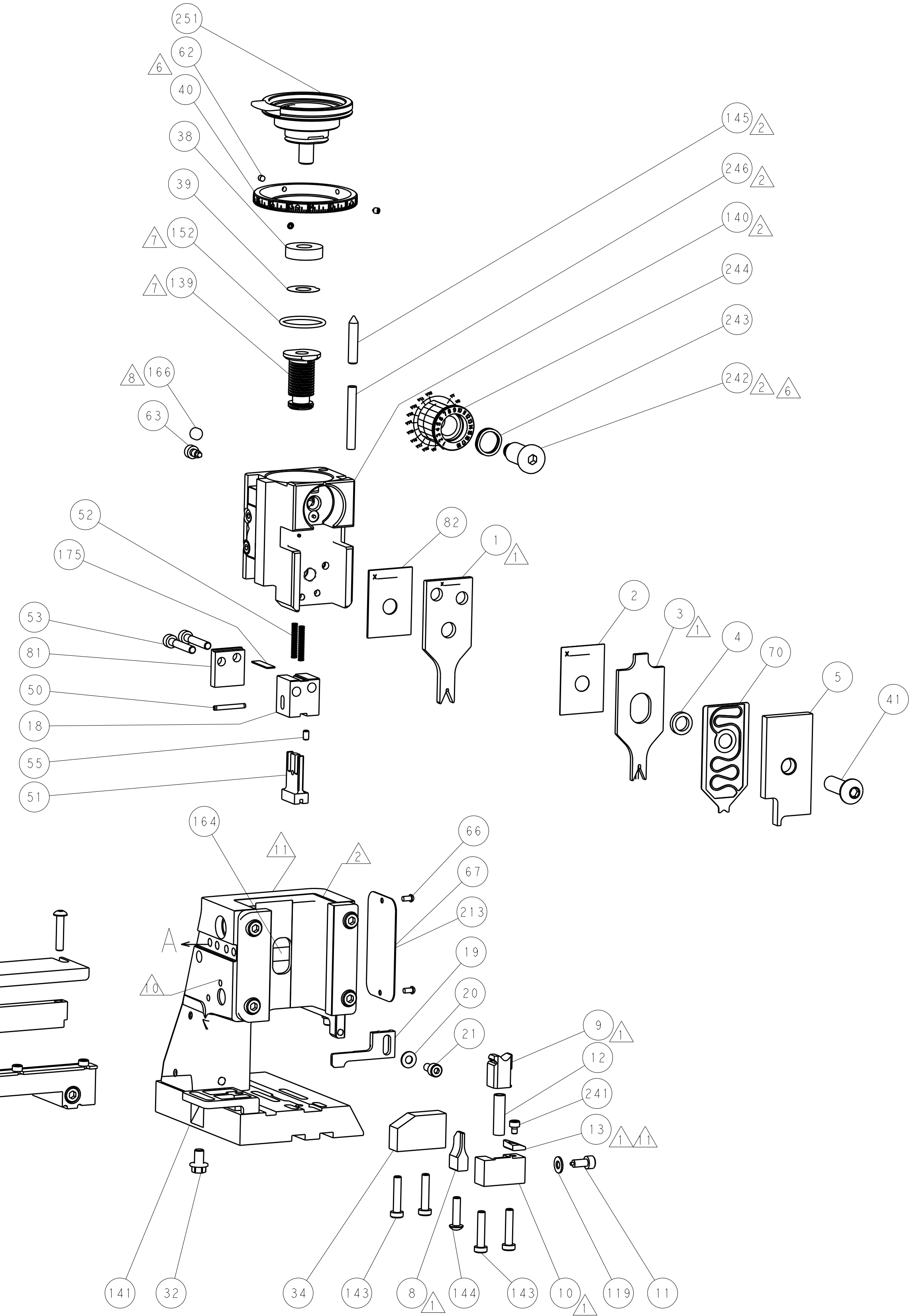
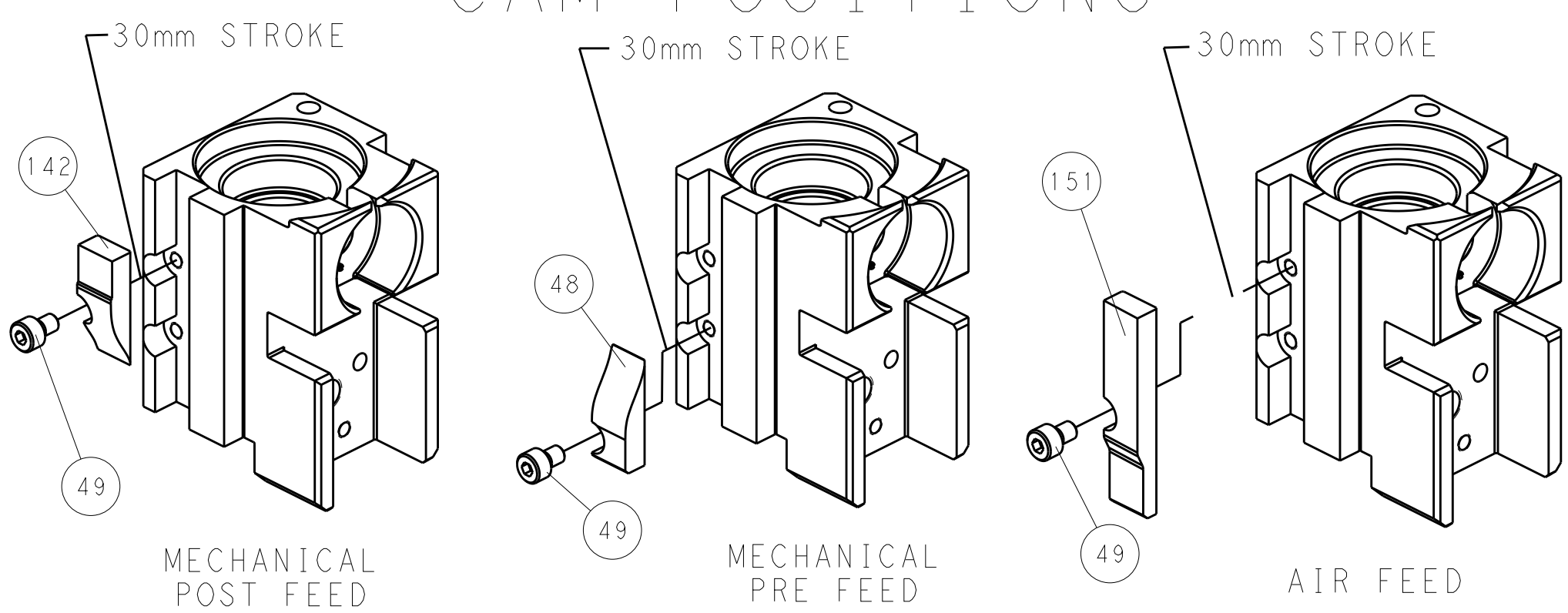
SERVO LATCH PLATE



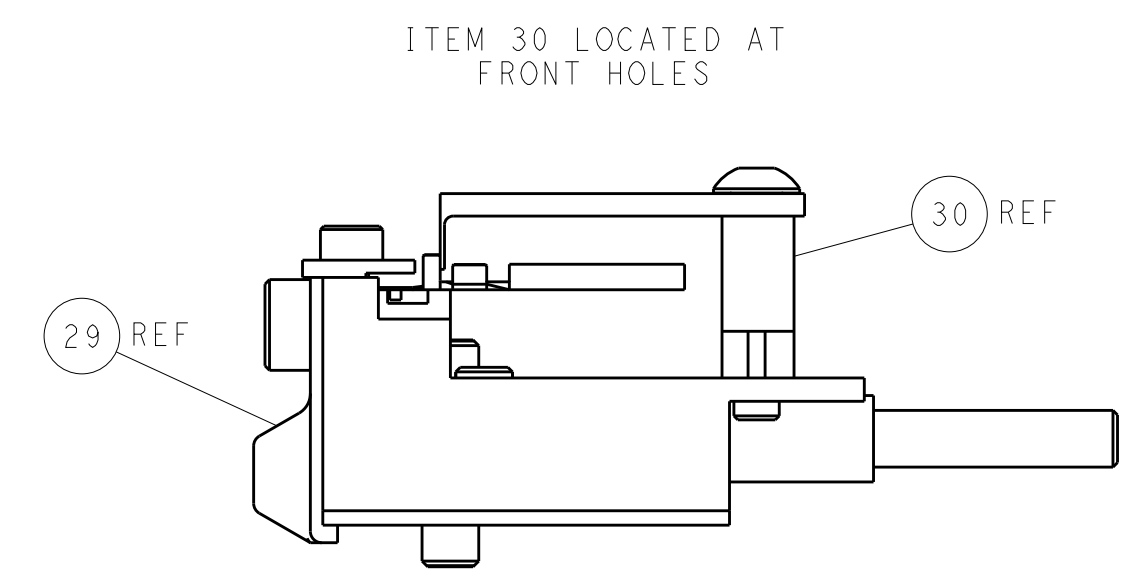
DOUBLE ACTING PNEUMATIC WITH SENSORS



CAM POSITIONS



TERMINAL SUPPORT LOCATION



FEED TRACK POSITION GUIDE BY INSULATION BARREL

PACIFIC VERSION
 Shown on sheets 3 of 4 & 4 of 4
 (Atlantic version shown on sheets 1 of 4 & 2 of 4)

DIMENSIONS:		TOLERANCES UNLESS OTHERWISE SPECIFIED:		DWN: C. MOYER 31 JUL 2012		TE Connectivity	
mm	0 PLC ±	1 PLC ±	2 PLC ±	3 PLC ±	4 PLC ±	Harrisburg, PA 17105-3608	
MATERIAL:		FINISH:		APVD: T. ELBIN 31 JUL 2012		NAME: Ocean Side Feed Applicator	
				PRODUCT SPEC:		RESTRICTED TO:	
				APPLICATION SPEC:		SIZE: CAGE CODE: DRAWING NO:	
				WEIGHT:		A11 00779 ©=2151725	
				CUSTOMER DRAWING:		SCALE: 1:2 SHEET 4 OF 4 REV L	