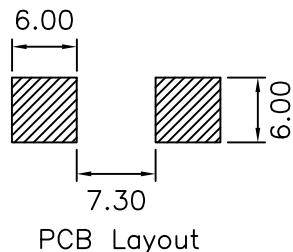
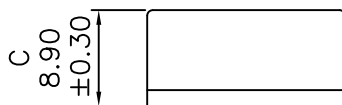
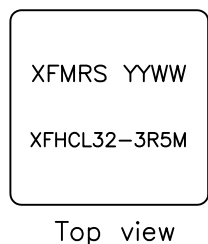
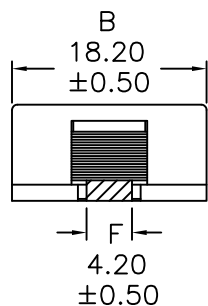
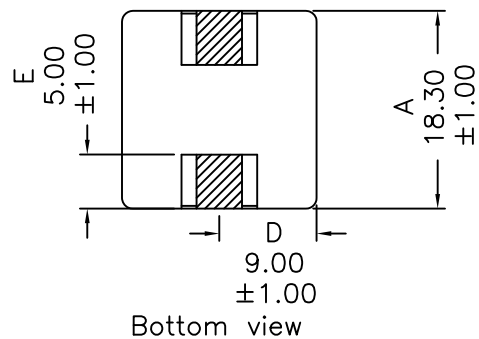
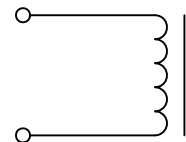


## 1. Mechanical Dimensions:



## 2. Schematic:



## 3. Electrical Specifications: @25C

OCL: 3.5uH ±20% @100KHz 10mA

Q: tbd Min @10KHz 50mV

Rated inductance: 3.0uH Typ @100KHz 10mA @22.5A

Rated current: 22.5A Max (Based on 50°C Rise in Temp)

Isat: 37.0A Typ (Based on 30% drop in OCL Max)

DCR: 3.1 mOhms ±8%

SRF: 38 MHz Typ

**PRELIMINARY**

### Notes:

1. Solderability: Leads shall meet MIL-STD-202G, Method 208H for solderability.
2. Flammability: UL94V-0
3. ASTM oxygen index: > 28%
4. Insulation System: Class F 155°C. UL file E151556
5. Operating Temperature Range: All listed parameters are to be within tolerance from -40°C to +125°C
6. Storage Temperature Range: -20°C to +40°C
7. Aqueous wash compatible
8. SMD Lead Coplanarity: ±0.004"(0.102mm)
9. Electrical and mechanical specifications 100% tested
10. RoHS Compliant Component

DOC. REV: A/-

XFMRS Inc www.XFMRS.com	Title: WE-HCI SMD Flat Wire High Current Inductor		
	UNLESS OTHERWISE SPECIFIED	P/N: XFHCL32-3R5M	REV. A
TOLERANCES: .xx ±0.25 Dimensions in MM	DWN.	Yuan	Feb-06-13
	CHK.	YK Liao	Feb-06-13
SHEET 1 OF 1	APP.	BSJ	Feb-06-13

**PROPRIETARY**

Document is the property of XFMRS Group & is not allowed to be duplicated without authorization.