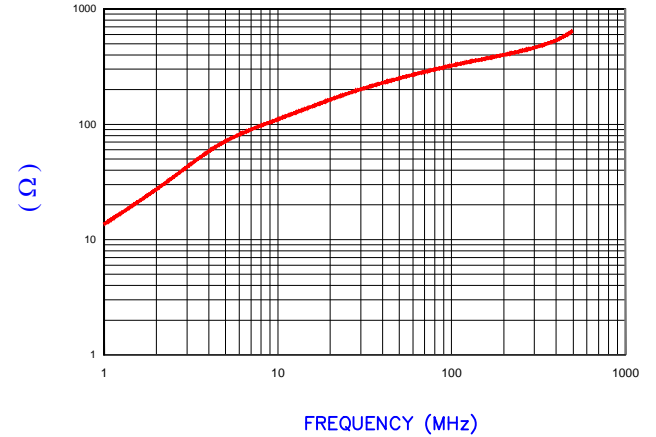


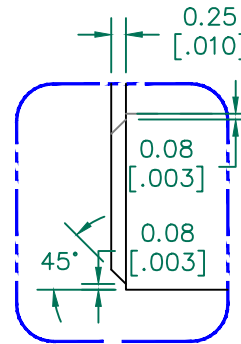
| IMPEDANCE ( Z ) |        |         |         |
|-----------------|--------|---------|---------|
| Frequency       | 25 MHz | 100 MHz | 300 MHz |
| Nominal (REF)   | 182 Ω  | 322 Ω   | 473 Ω   |
| Minimum         | - Ω    | 258 Ω   | - Ω     |

Z vs. FREQUENCY  
(REF. ONLY)

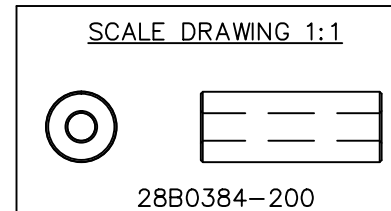


AGILENT E4991A Impedance/Material Analyzer  
HP 16092A Test Fixture, REF #3859

**UNCONTROLLED  
DOCUMENT**



DETAIL "A"  
CHAMFER  
SCALE=8:1



NOTES: UNLESS OTHERWISE SPECIFIED

1. COSMETIC SPECIFICATION REFER TO WI-QA-038.

FERRITE CORE DIMENSIONS (SPEC): mm [in]

|   |              |   |             |
|---|--------------|---|-------------|
| A | 9.75 [.384]  | ± | 0.20 [.008] |
| B | 3.80 [.150]  | ± | 0.15 [.006] |
| C | 25.00 [.984] | ± | 0.41 [.016] |

WEIGHT/1000    7.82 kgs    17.23 lbs

| DIMENSIONS ARE IN mm (INCHES). |  |          |     | This print is the property of Laird Tech. and is loaned in confidence subject to return upon request and with the understanding that no copies shall be made without the written consent of Laird Tech. All rights to design or invention are reserved. |        | Laird        |           |
|--------------------------------|--|----------|-----|---|--------|--------------|-----------|
| E                              | UPDATE THE LOGO                          | 05/13/15 | QIU | PROJECT/PART NUMBER:  | REV    | PART TYPE:   | DRAWN BY: |
| D                              | UPDATE COMPANY LOGO                      | 12/28/12 | QIU | 28B0384-200   | E      | FERRITE CORE | JRK       |
| C                              | UPDATE Z SPECS AND COMPANY LOGO          | 05/25/07 | JRK | DATE:   | SCALE: | MATERIAL:    |           |
| B                              | CORRECT INCHES ON C DIM, UPDATE PART WGT | 03/02/04 | JRK | 02/03/04  | 3 : 1  | FERRITE      |           |
| A                              | ORIGINAL DRAFT                           | 02/03/04 | JRK | CAD #   | TOOL # |              |           |
| REV                            | DESCRIPTION                              | DATE     | INT | 28B0384-200-E   | B0384  |              |           |