

## SPECIFICATION

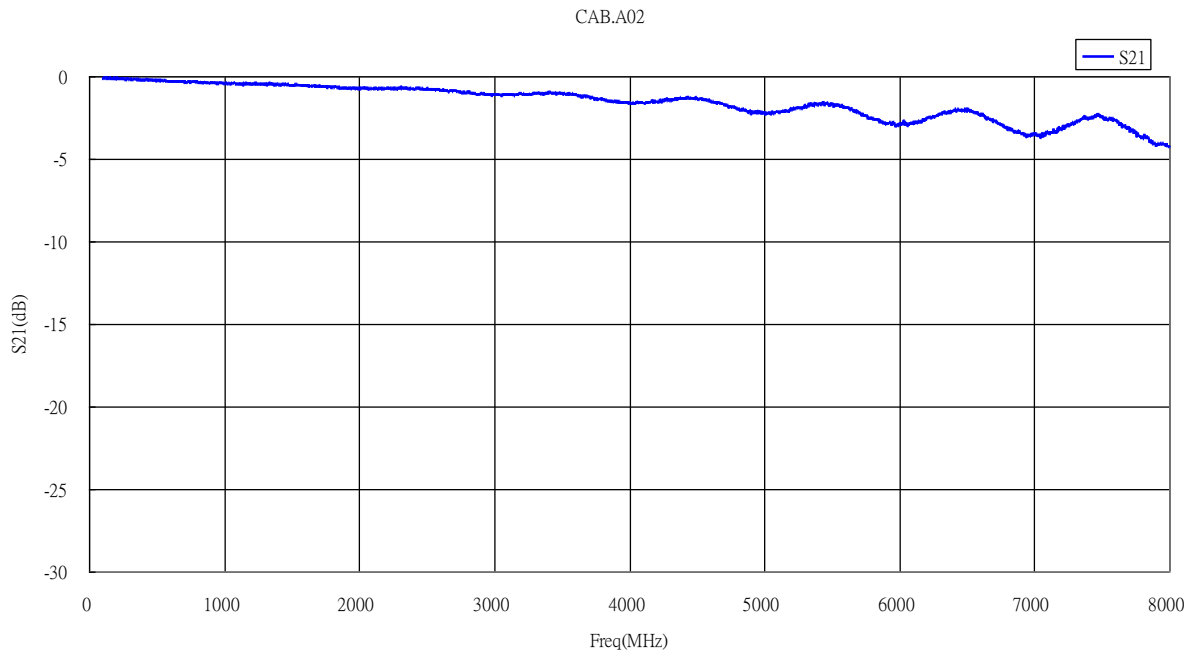
Part No. : **CAB.A02**

Product Name : Taoglas Cable Assembly  
SMA(F) Bulkhead Straight to  
IPEX MHFIII(W.FL comp)  
with 95mm  $\varnothing$ 0.81mm cable

Photo :

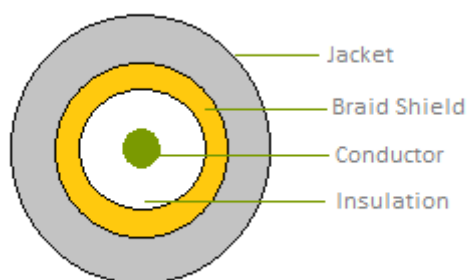


## 1.0 Cable Insertion Loss



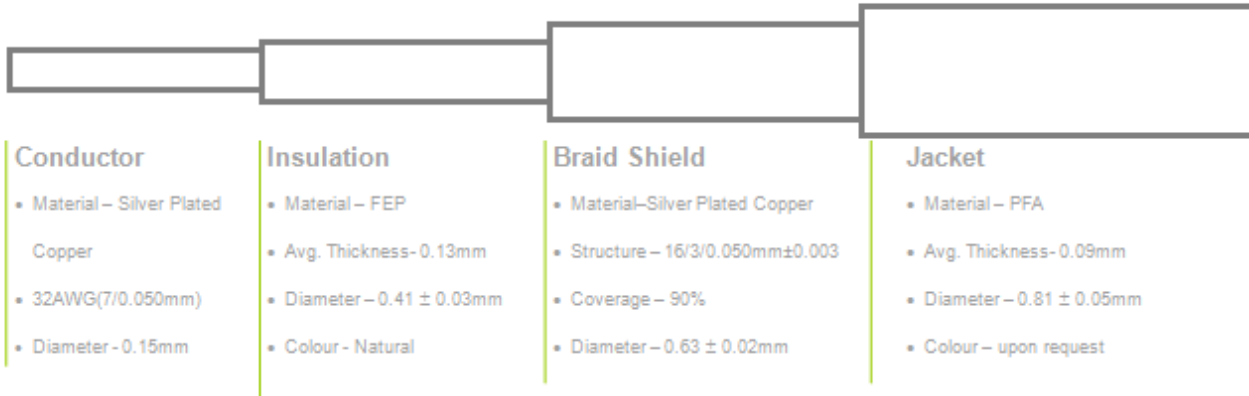
## 2.0 Ø0.81mm Cable Specification

### 2.1 Drawing – Cross Section



## 2.2 Structure and Dimensions

### Structure and Dimensions

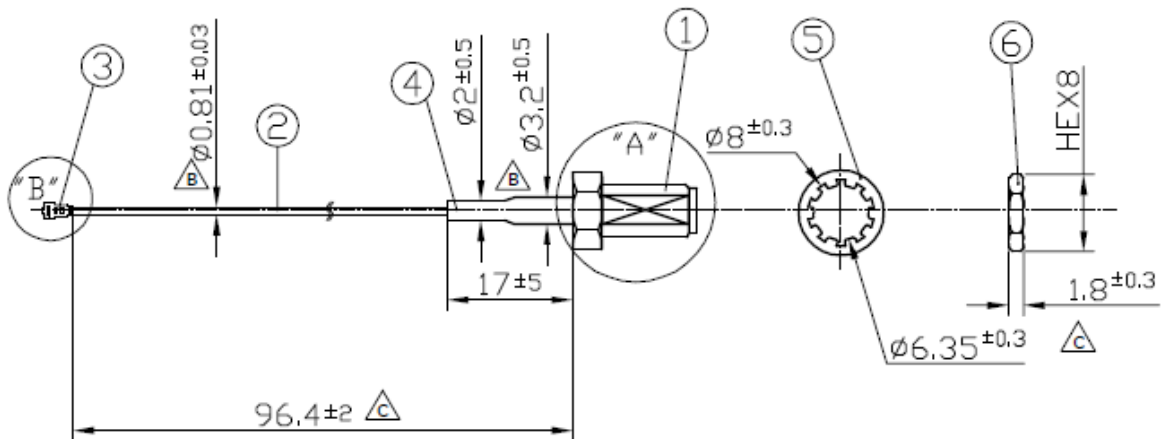
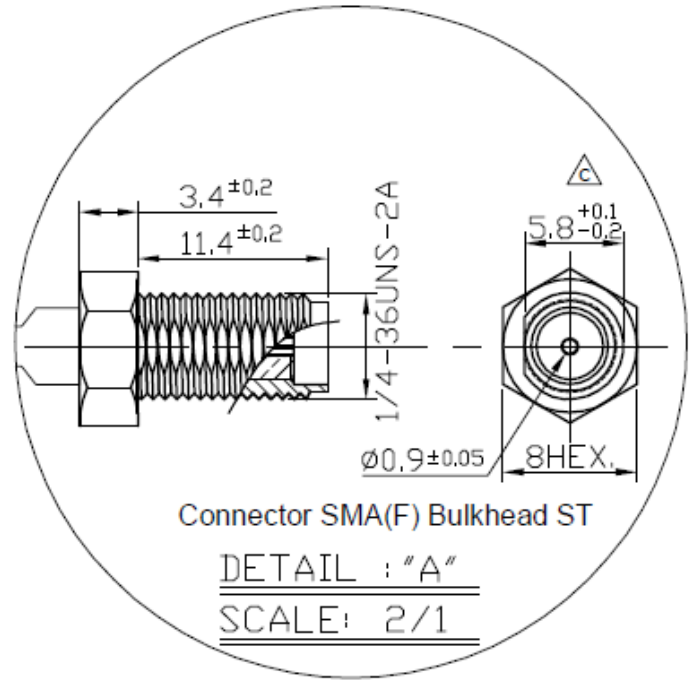
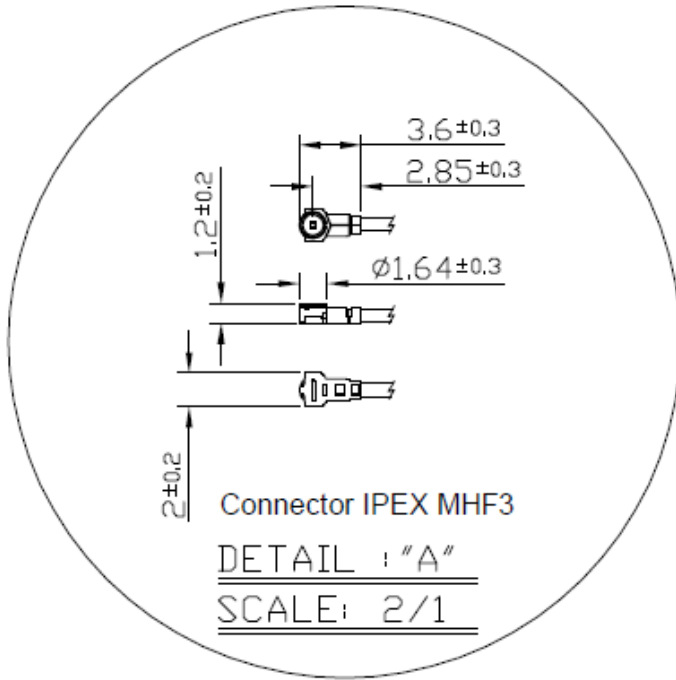


## 2.3 Electrical & Physical Specification

|   |                        |  |
|---|------------------------|--|
| 1 | Insulation Resistance: | 1000 MEGA OHM-KM Min.  |
| 2 | Conductor Resistance:  | 1400 OHM/KM/20°C Max.  |
| 3 | Dielectric Strength:   | AC 1.0 KV/minute   |
| 4 | Spark test:            | 2.5 KV   |
| 5 | Nom. Impedance         | 50 ± 3 Ohms  |
| 6 | Nom. Capacitance       | 97 ± 3 pF/m  |
| 7 | Attenuation (dB/1M)    | 1.0GHz    3.60<br>2.0GHz    5.10<br>3.0GHz    6.20<br>4.0GHz    7.50<br>5.0GHz    8.50<br>6.0GHz    9.40 |

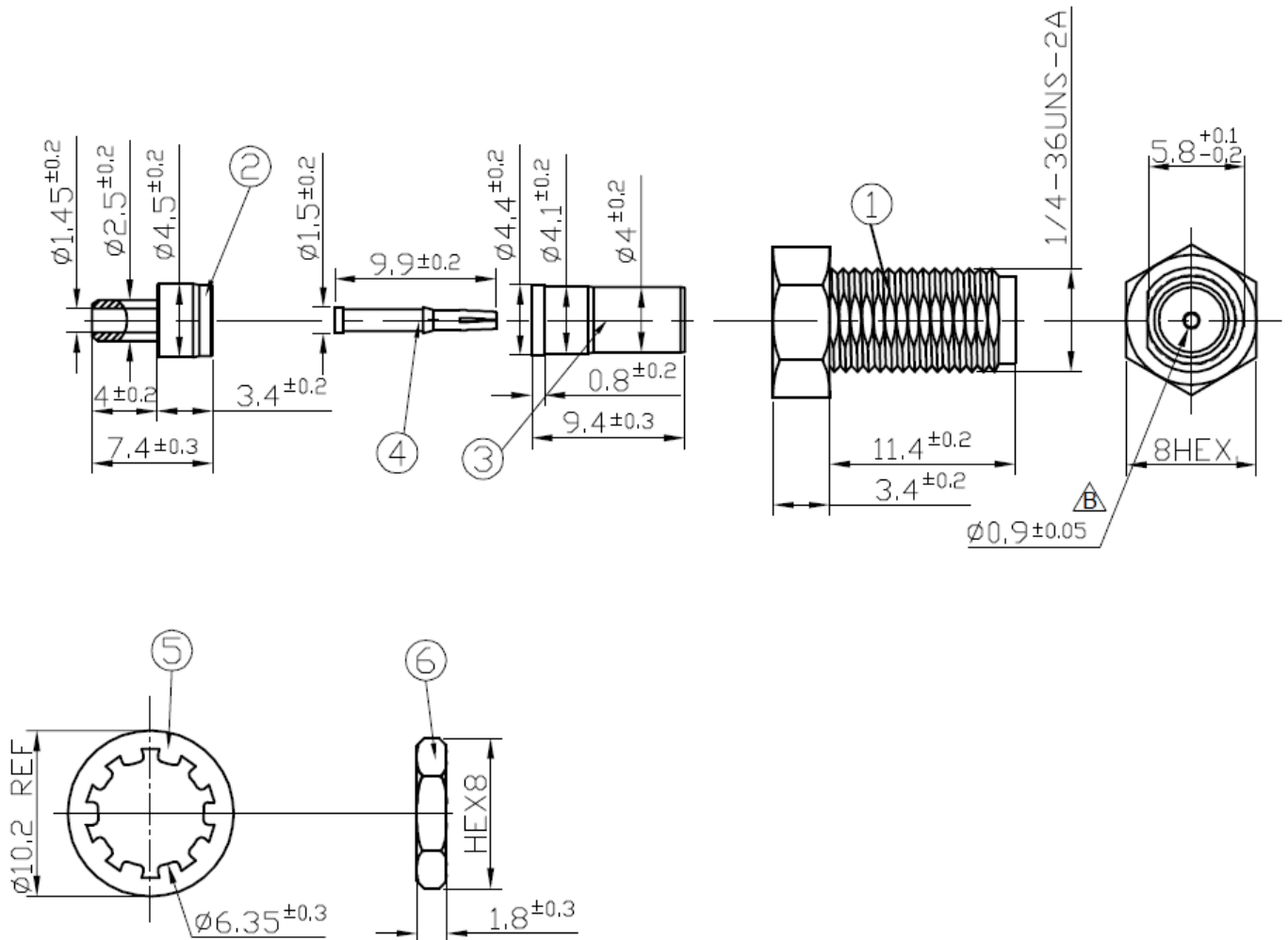
### 3.0 Technical Drawing

#### 3.1 CAB.A02



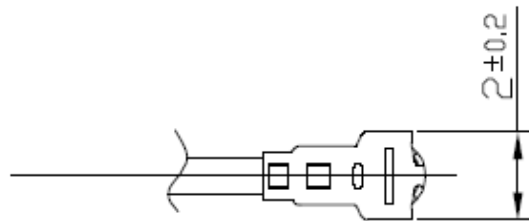
## 3.2 Connectors

### 3.2.1 SMA(F) Bulkhead Jack

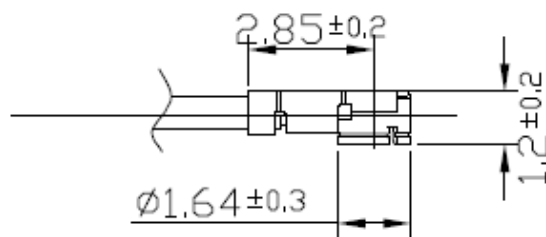


|   | Name           | Material | Finish | QTY |
|---|----------------|----------|--------|-----|
| 1 | Body           | Brass    | Gold   | 1   |
| 2 | Body           | Brass    | Gold   | 1   |
| 3 | Insulator      | PTFE     | White  | 1   |
| 4 | Female Contact | Copper   | Gold   | 1   |
| 5 | Washer         | Brass    | Gold   | 1   |
| 6 | Nut            | Brass    | Gold   | 1   |

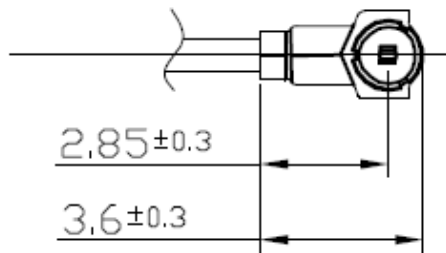
### 3.2.2 IPEX MHFIII(W.FL comp)



Bottom



Side



Top

Mated View

