



1214-300M

300 Watts - 40 Volts, 150 μ s, 10%
Radar 1200 - 1400 MHz

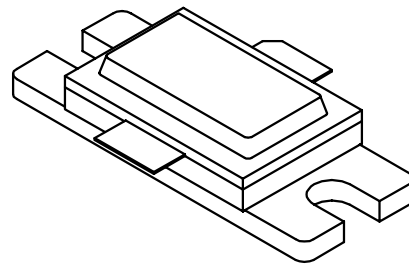
GENERAL DESCRIPTION

The 1214-300M is an internally matched, COMMON BASE transistor capable of providing 300 Watts of pulsed RF output power at one hundred fifty microseconds pulse width, ten percent duty factor across the band 1200 to 1400 MHz. This hermetically solder-sealed transistor is specifically designed for L-Band radar applications. It utilizes gold metalization and NiCr emitter ballasting to provide high reliability and supreme ruggedness.

ABSOLUTE MAXIMUM RATINGS

Maximum Power Dissipation @ 25°C	600 Watts
Maximum Voltage and Current	
BVces Collector to Emitter Voltage	70 Volts
BVebo Emitter to Base Voltage	3.5 Volts
Ic Collector Current	20 Amps
Maximum Temperatures	
Storage Temperature	- 65 to + 200°C
Operating Junction Temperature	+ 200°C

CASE OUTLINE 55ST, STYLE 1



ELECTRICAL CHARACTERISTICS @ 25 °C

SYMBOL	CHARACTERISTICS	TEST CONDITIONS	MIN	TYP	MAX	UNITS
Pout	Power Out	Freq = 1200 – 1400 MHz	300		400	Watts
Pg	Power Gain	Vcc = 40 Volts	8.75			dB
η_c	Collector Efficiency	Pin = 40 Watts	50	55		%
RI	Input Return loss	Pulse Width = 150 μ s	10.0			dB
VSWR ¹	Load Mismatch Tolerance	Duty Factor = 10%			2:1	
VSWRs	Load Mismatch - Stability				1.5:1	

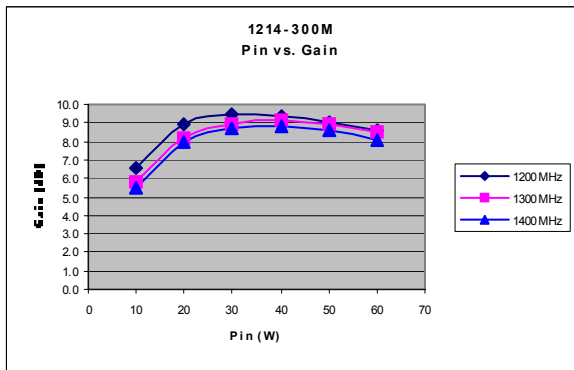
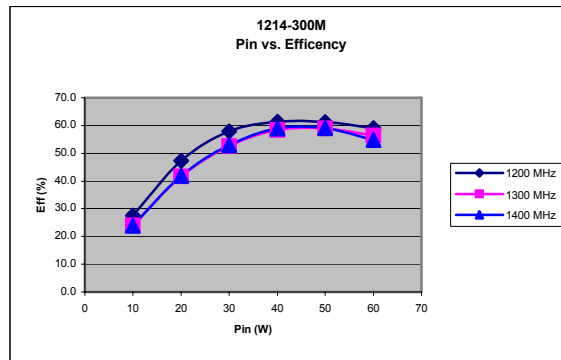
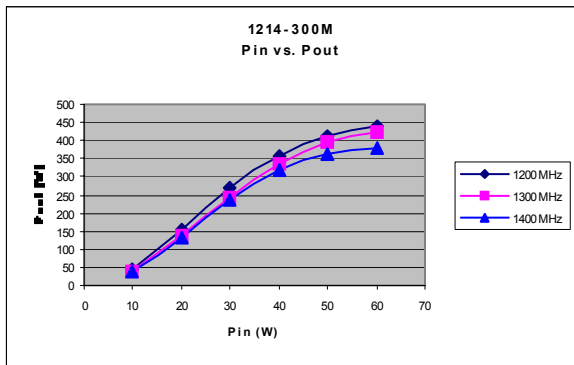
Note 1: Pulse condition of 150 μ sec, 10%.

Bvces	Collector to Emitter Breakdown	Ic = 80 mA	70			Volts
Ices	Collector to Emitter Leakage	Vce = 40 Volts			10	mA
θ_{jc} ¹	Thermal Resistance	Rated Pulse Condition			0.29	°C/W

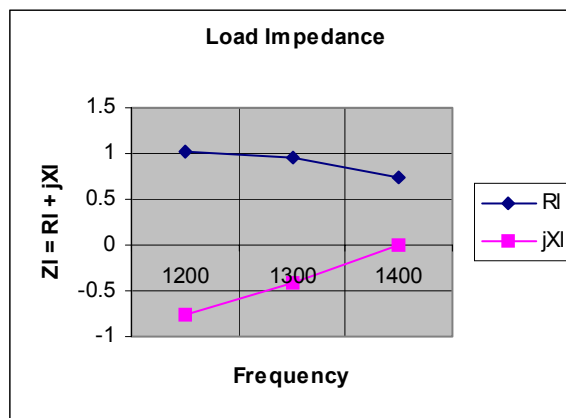
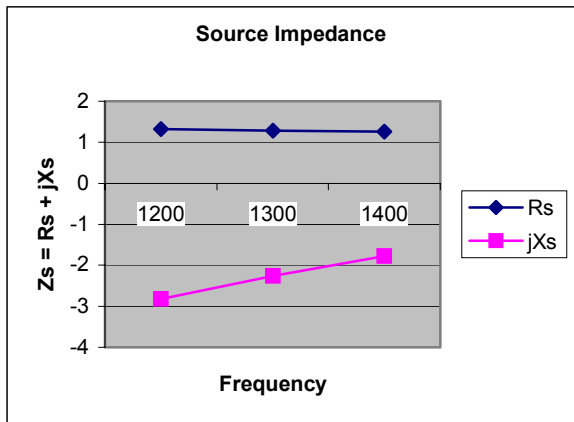


1214-300M

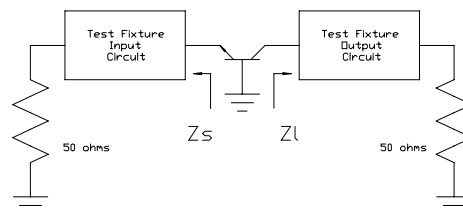
Performance Curves



Impedance Information



Freq	Impedance	
	Zs	Zl
1200	1.32-j2.82	1.03-j0.75
1300	1.28-j2.26	0.95-j0.41
1400	1.26-j1.78	0.75-j0.00

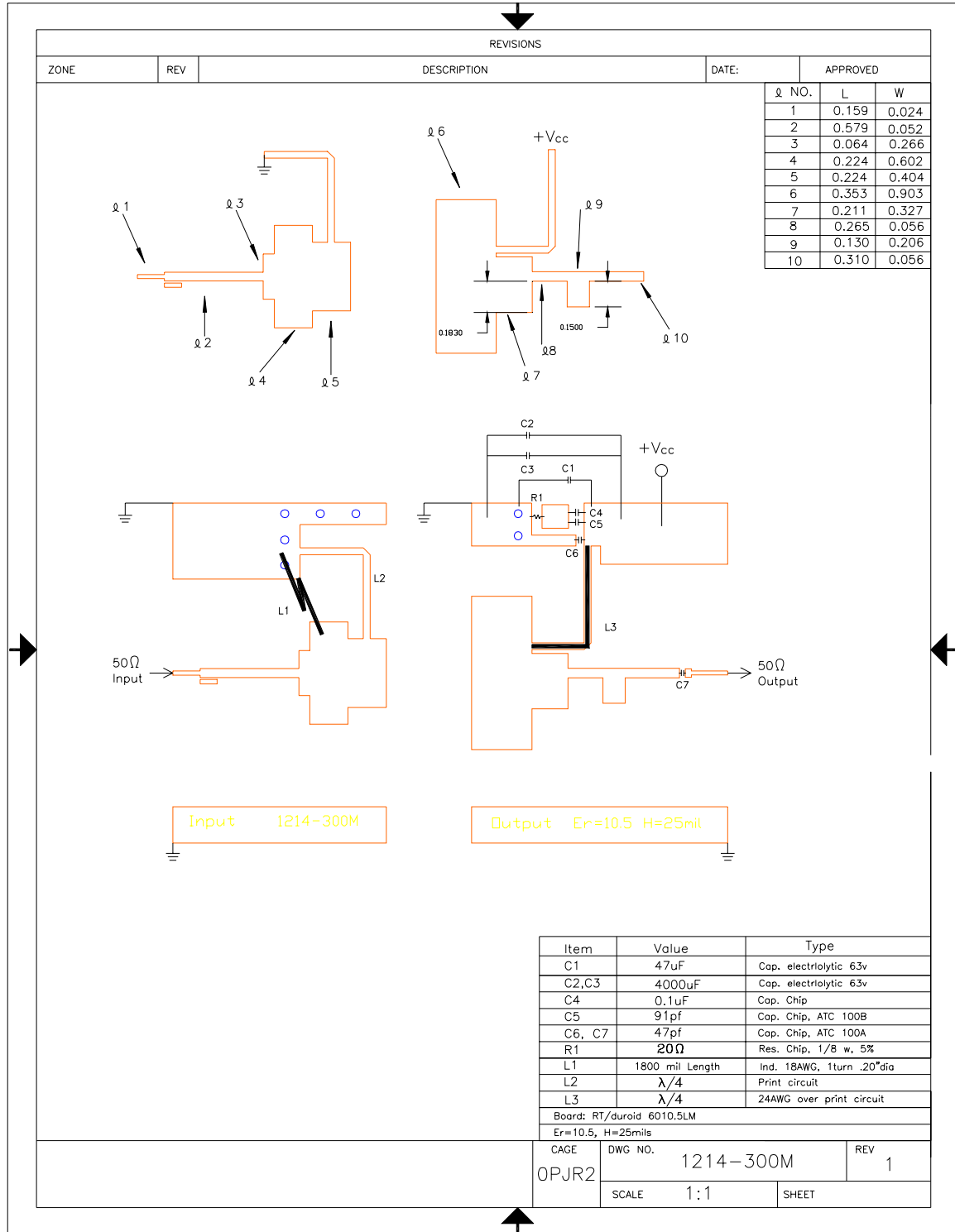


MSC Corp., reserves the right to make changes without further notice. MSC recommends that before the product(s) described herein are written into specifications, or used in critical applications, that the performance characteristics be verified by contacting the factory.

MSC Corp. 3000 Oakmead Village Drive, Santa Clara, CA 95051-0808 TEL. 408-986-8031 FAX 408-869-2324

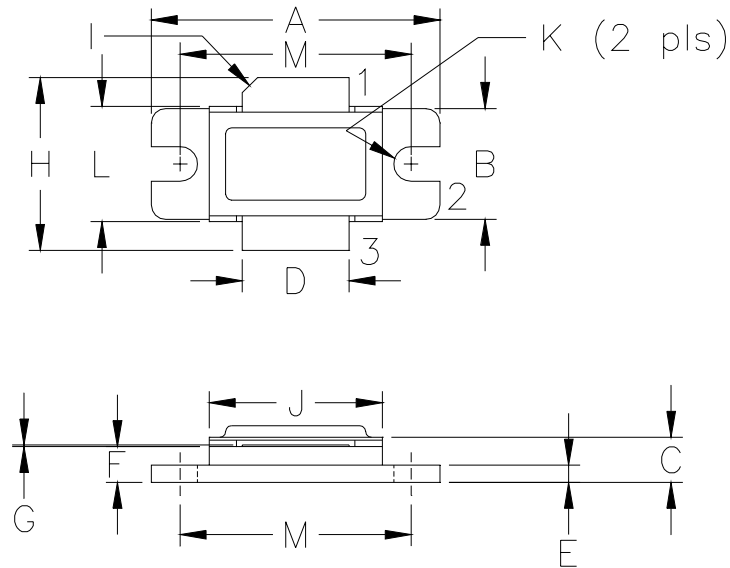
1214-300M

BROADBAND TEST CIRCUIT





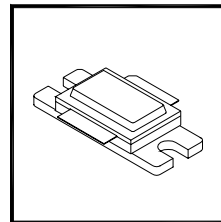
1214-300M



DIM	MILLIMETER	±TOL	INCHES	±TOL
A	25.40	.25	1.000	.010
B	9.78	.25	.385	.010
C	4.00	.19	.142	.007
D	9.40	.13	.370	.005
E	1.53	.13	.060	.005
F	3.18	.13	.125	.005
G	0.08	+05/-00	.003	+.002/ -.000
H	19.05	0.51	.750	.020
I	45°	5°	45°	5°
J	15.24	.25	.600	.010
K	3.05 DIA	.13	.120 DIA	.005
L	10.15	.13	.400	.005
M	20.32	.25	.800	.010

STYLE 1:
 PIN 1 = COLLECTOR
 2 = BASE
 3 = EMITTER

STYLE 2:
 PIN 1 = COLLECTOR
 2 = EMITTER
 3 = BASE



DWG NO.

55ST

MSC Corp., reserves the right to make changes without further notice. MSC recommends that before the product(s) described herein are written into specifications, or used in critical applications, that the performance characteristics be verified by contacting the factory.

MSC Corp. 3000 Oakmead Village Drive, Santa Clara, CA 95051-0808 TEL. 408-986-8031 FAX 408-869-2324