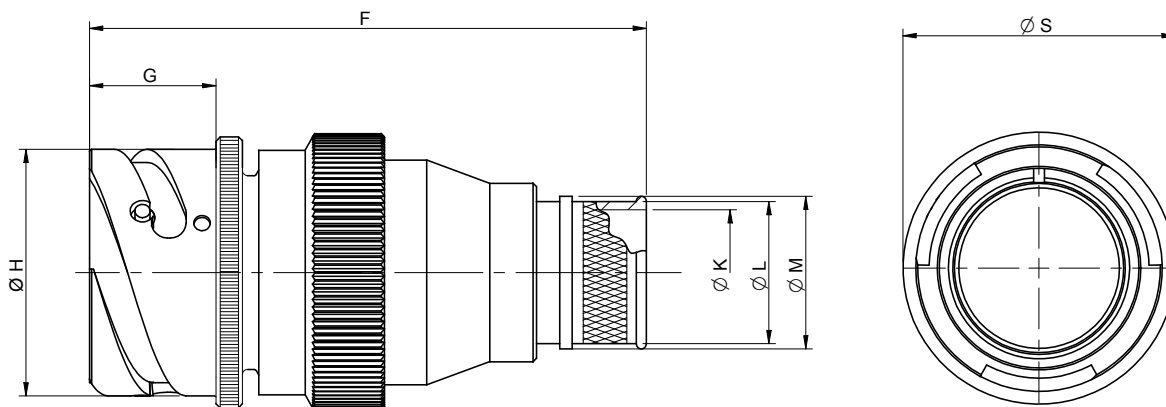
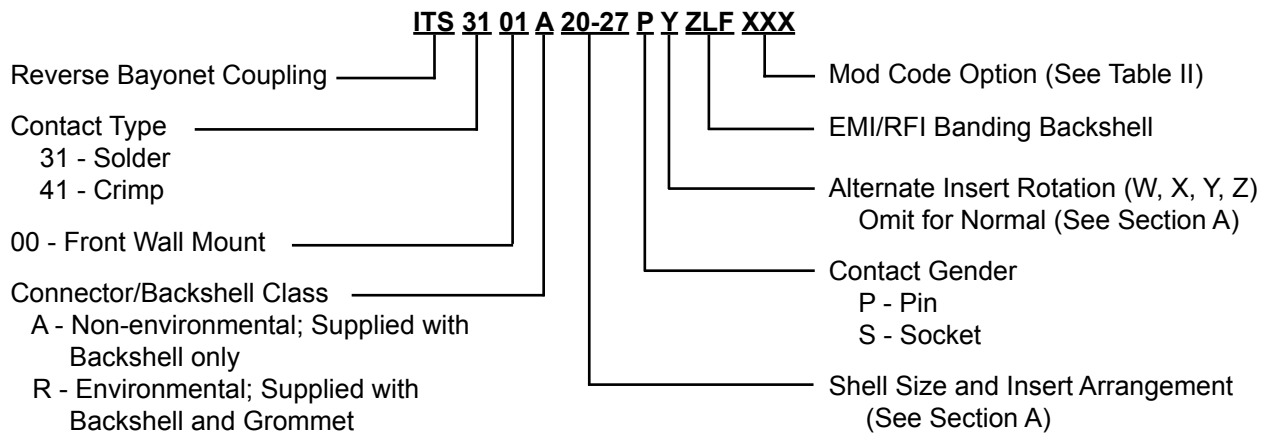


ITS 3101 A (ZLF) and ITS 4101 A (ZLF) In Line Cylindrical Receptacle Assembly with EMI/RFI Banding Backshell



Application Notes:

1. In-line receptacle with rear-end backshell for attachment of BAND-IT® Shield termination bands
2. Connector/Backshell Class "A" (non-environmental)—Wire sealing grommet not supplied.
3. Standard materials configuration consists of aluminum alloy. For platings, see TABLE II finish options.
4. Standard contact material consists of copper alloy with silver plating or gold plating.
5. A broad range of additional connector accessories are available.
See our website and/or contact the factory for complete information.
6. Standard insert material is synthetic rubber.
Add "FR" prefix to front of part number to specify fire resistant inserts.

ITS 3101 A (ZLF) and ITS 4101 A (ZLF)
In Line Cylindrical Receptacle Assembly
with EMI/RFI Banding Backshell



TABLE I: DIMENSIONS

SIZE	F (max)	G +0.2 -0	ØH +0 -0.1	S ±0.1		
10SL	54	14.3	18.2	21.25	21.8	3.2
14S	54	14.5	24.5	28.38	28.8	3.2
16S	54	14.5	27.2	30.6	30.5	3.2
16	66	19.1	27.2	30.6	30.5	3.2
18	66	19.1	30.7	33.78	33.8	3.2
20	67	19.1	34	36.9	36.9	3.2
22	67	19.6	37.3	39.75	39.5	3.2
24	70	20.6	40.9	43.9	43.9	3.7
28	70	20.7	46.7	49.7	48.4	3.7
32	71	22.3	53.4	46.95	56	4.3
36	71	22.3	59.6	62.2	62.4	4.3
40	71	22.3	65.5	68.55	68.6	4.3

TABLE III: ENTRY SIZE TABLE

Entry size	ØK	ØL	ØM
01	3.2	6.4	7.9
02	4.8	7.9	9.5
03	6.4	9.5	11.1
04	7.9	11.1	12.7
05	9.5	12.7	14.3
06	11.1	14.3	15.8
07	12.7	15.9	17.4
08	14.3	17.5	19.1
09	15.9	19.1	20.6
10	17.5	20.6	22.2
11	19.1	22.2	23.8
12	20.6	23.8	25.4
13	22.2	25.4	27.0
14	23.8	27.0	28.5
15	25.4	28.6	30.1
16	27.0	30.2	31.8
17	28.6	31.8	33.3
18	31.8	34.9	36.5
19	34.9	38.1	39.7
20	38.1	41.3	42.8
21	41.3	44.5	46.0
22	44.5	47.6	49.2
23	47.6	50.8	52.4
24	50.8	54.0	55.5

TABLE II: MODIFICATION CODES

CONTACT OPTIONS	
Sym	Description
B0	Connector Less Contacts
B1	Connector with Gold Plated Contacts
Omit for standard version (Silver plated)	
FINISH OPTIONS	
Sym	Description and RoHS compliant (*)
F2	Bright Nickel Plating (*)
F6	Black Electrodeposited Paint (*)
F7	Black Zn-Co Plating (*)
F8	Olive Drab Zn-Co Plating
F11	Electroless Nickel (*)
Omit for standard version (Cadmium Olive Drab Finish)	

