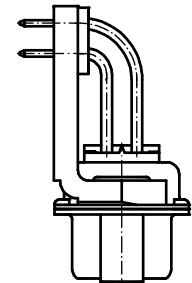
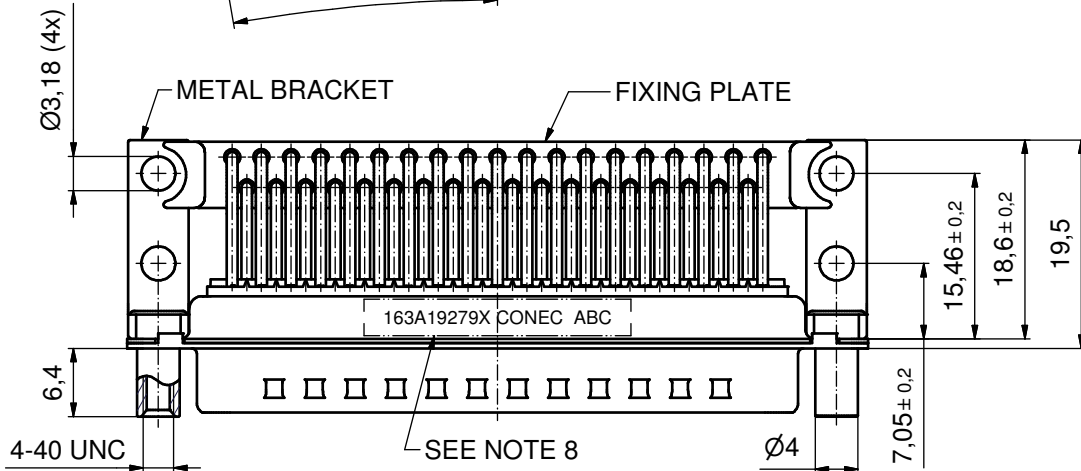
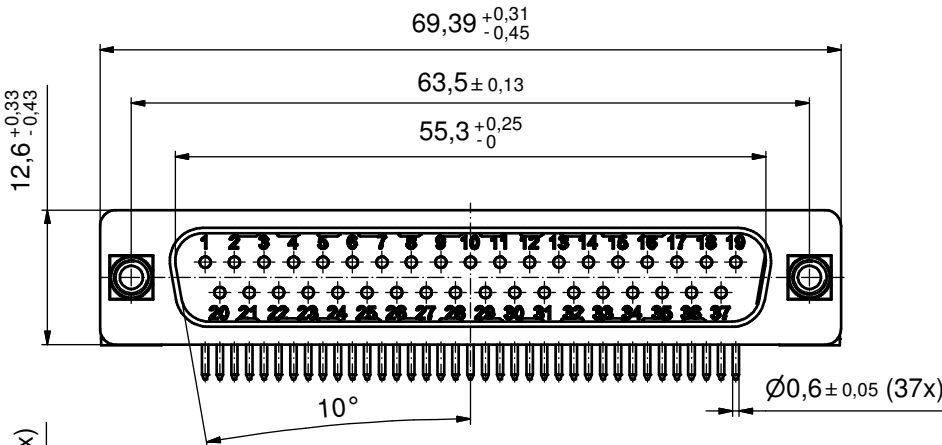
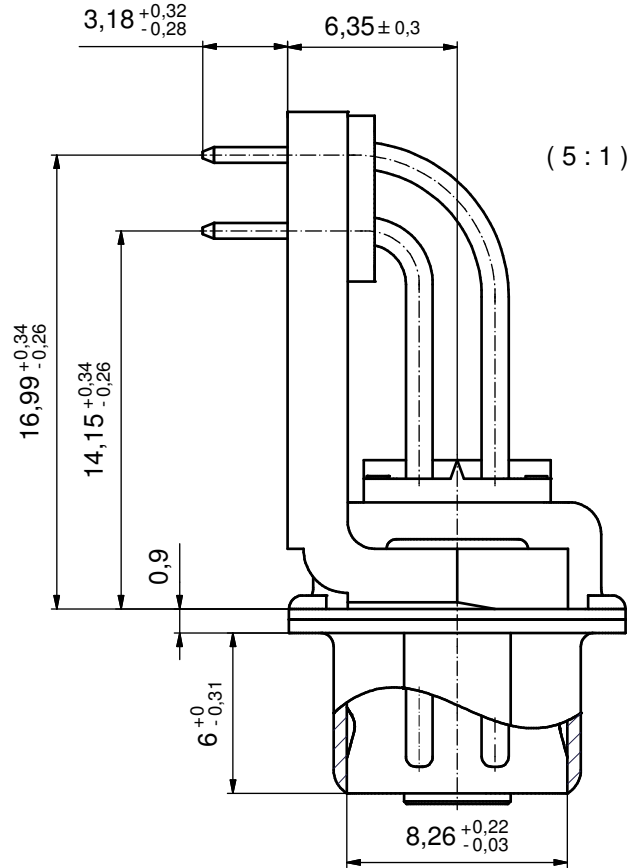
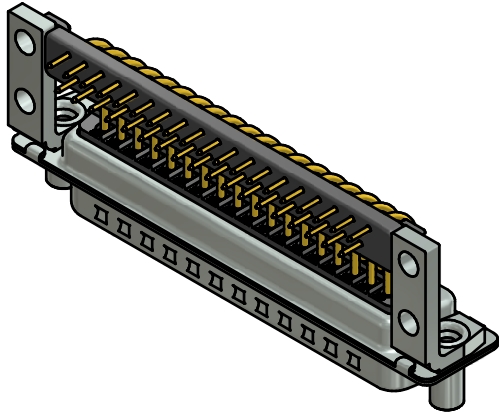


NOTES:

1. METAL SHELLS: STEEL; min. 315µm TIN over 40-80µm NICKEL
2. INSULATORS: PBT GF UL 94 V-0; BLACK
3. CONTACTS: COPPER ALLOY
PLATING: GOLD FLASH over NICKEL
4. PLASTIC BRACKETS: PBT GF UL 94 V-0; BLACK
5. THREADED LOCKS: COPPER ALLOY; min. 200µm TIN over 80µm NICKEL
6. FIXING-PLATE: PBT GF UL 94 V-0; BLACK
7. MAXIMUM TORQUE VALUE FOR THREAD: 6 in.LB
8. CONNECTOR IS PART MARKED: 163A19279X CONEC ABC

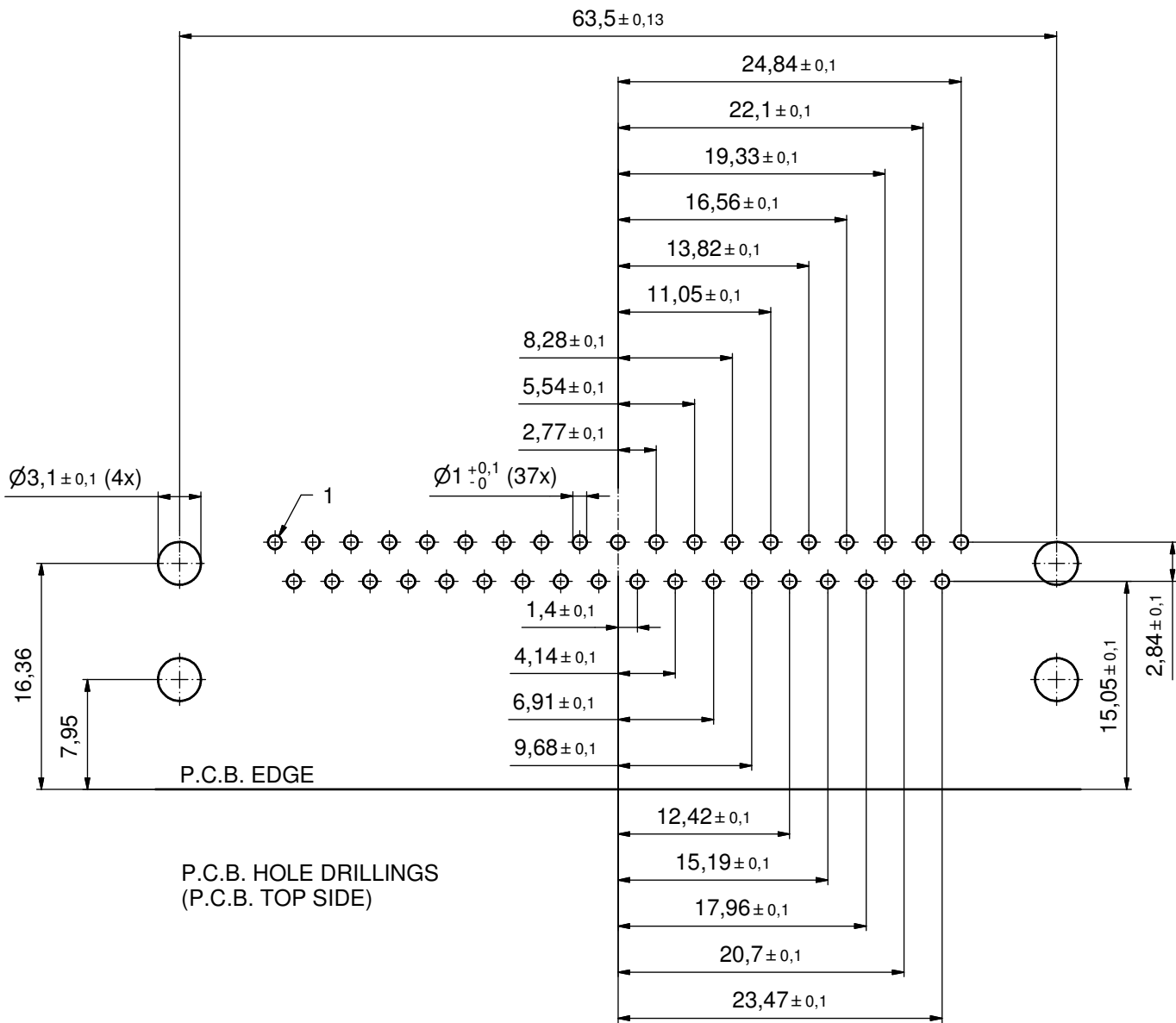




Directive 2002/95/EC RoHS compliant

THIS DRAWING MAY NOT BE COPIED OR REPRODUCED IN ANY WAY, AND MAY NOT BE PASSED ON TO A THIRD PARTY WITHOUT WRITTEN PERMISSION. OWNERSHIP AND COPYRIGHT OF CONEC GmbH DO NOT ALTER CAD DRAWING BY HAND	tolerance		dim. in mm	scale:	2:1 (5:1)
				material:	SEE NOTES
	drawn	10.06.11	Henneboel	title: D-SUB MALE 90° 37pos. SOLDER PIN ANGLED 0.590inch threaded lock, metal bracket, fixing plate	
	appd.	10.06.11	Fischer		
	norm				
	d-old				
a	Original		dwg no: 16K1A2836		
rev.	description	date	name	part no: 163A19279X	



DIN-A3
sh: 1



THIS DRAWING MAY NOT BE COPIED OR REPRODUCED IN ANY WAY, AND MAY NOT BE PASSED ON TO A THIRD PARTY WITHOUT WRITTEN PERMISSION. OWNERSHIP AND COPYRIGHT OF CONEC GmbH DO NOT ALTER CAD DRAWING BY HAND					tolerance	 dim. in mm	scale:	3:1			
					date		name	material:	SEE SHEET 1		
					drawn		10.06.11	Henneboel	title: P.C.B. HOLE DRILLINGS 37pos. SOLDER PIN ANGLED 0.590inch threaded lock, metal bracket, fixing plate		
					appd.		10.06.11	Fischer			
					norm						
					d-old						
	a	Original						dwg no:	16K1A2836	DIN-A3	
	rev.	description	date	name				part no:	SEE SHEET 1	sh: 2	