

# Surface Mount Inductors

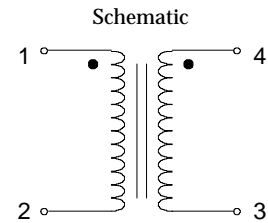
Toroid Mount meets UL94VO

Designed for IR & Vapor Phase Reflow Processes

Custom Designs Available

For use as a dual inductor, single inductor, or transformer. Connect in series for high inductance values or wired in parallel for less inductance, but twice the current capacity. As a 1:1 transformer, they can provide a minimum of 500 volts isolation with good frequency response.

These parts are manufactured using Sendust material. Lower cost versions of these products are available using powdered iron, however, there is an increase in core loss.



Series Operation:  
Connect 2 & 4

Parallel Operation:  
Connect 1 & 4, 2 & 3

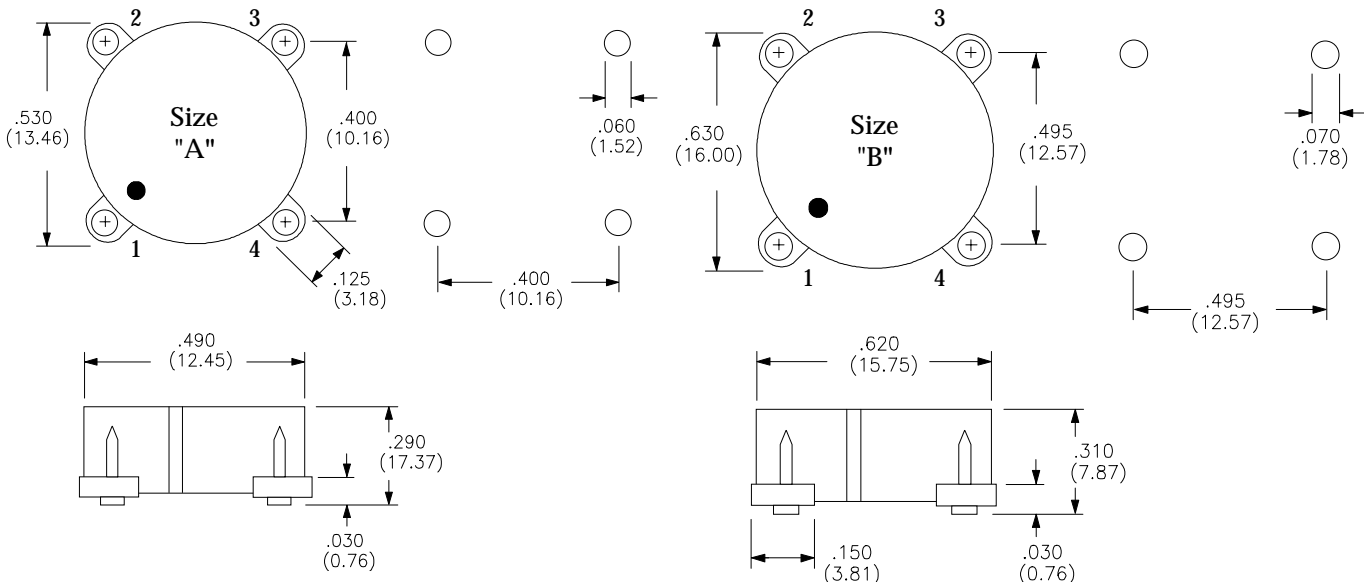
Electrical Specifications at 25° C

Part Number	--- Parallel Ratings ---			--- Series Ratings ---			Energy Typ. (μJ)	Size Code
	L ± 30% (μH)	DCR Max. (mΩ)	I Max. ADC	L ± 30% (μH)	DCR Max. (mΩ)	I Max. ADC		
L-15100	10	38	2.00	40	76	1.00	14	A
L-15101	20	175	1.15	80	350	0.58	13	A
L-15102	50	300	0.73	200	600	0.37	13	A
L-15103	100	375	0.51	400	750	0.26	13	A
L-15104	200	700	0.36	800	1400	0.18	13	A
L-15105	10	40	2.50	40	80	1.25	26	A
L-15106	20	103	1.60	80	206	0.80	26	A
L-15107	50	180	1.02	200	360	0.51	26	A
L-15108	82	320	0.73	328	640	0.37	26	A
L-15109	100	375	0.73	400	750	0.37	26	A
L-15110	300	625	0.42	1200	1250	0.21	26	A
L-15111	10	38	3.00	40	76	1.50	32	B
L-15112	20	100	1.50	80	200	0.75	23	B
L-15113	50	350	0.95	200	700	0.48	23	B
L-15114	100	375	0.67	400	750	0.34	23	B
L-15115	300	720	0.39	1200	1440	0.20	23	B
L-15116	10	29	4.00	40	58	2.00	55	B
L-15117	20	50	2.10	80	100	1.05	45	B
L-15118	50	90	1.35	200	180	0.68	45	B
L-15119	100	175	0.95	400	350	0.48	45	B

## Physical Dimensions in inches (mm)

Footprints of Contact Surface Area, Not PCB Layout

*Tape & Reel Available*



Specifications are subject to change without notice

CIRCLES M - 5/97