



Load Controllers Up to 100 Amps • Form X Magnetic Latching

SPECIFICATIONS

GENERAL

Contact Arrangement3PST (3 Form X)
Weight..... 36 oz max.

PERFORMANCE

Contact Ratings (Note 1):

Resistive Up to 100 Amps @ 28 VDC or
115/208V 400 Hz

Inductive60% of rated resistive @ 28 VDC or
115/208V 400 Hz

Motor40% of rated resistive @ 28 VDC or
115/208V 400 Hz

Lamp15% of rated resistive @ 28 VDC or
115/208V 400 Hz

Life 50,000 cycles @ rated Resistive load
25,000 cycles @ rated Motor load
100,000 cycles mechanical

Coil Data: (@ 28 VDC and 25°C)

Nominal Coil Voltage..... 28 to 32 VDC
Latch/Reset Voltage (@ 71°C)..... 18 VDC max
Coil Resistance 10 Ohms

Rupture 3600 Amperes

Response Time: 12 ms nom.

Contact Bounce Time..... 2 ms max
@ rated contact load

Contact Voltage Drop:

Initial225 mv @ Rated Current
End of Life250 mv @ Rated Current

ENVIRONMENTAL

Temperature Range -54°C to +71°C

Vibration (Note 2)..... 10 G'S 50 - 2000 Hz

Shock (Operating)(Note 2) 25 G's 11 ms

Acceleration 15 G

ELECTRICAL CHARACTERISTICS

Duty Cycle.....Continuous

Insulation Resistance 100 megohms
@ 500V 25°C

Dielectric Strength:

Sea Level:

Contact to Case 1,500 VRMS

Contact to Coil 1,500 VRMS

Coil to Case 1,500 VRMS

Across Open Contacts 1,350 VRMS

50,000 Feet:

All Points 500 VRMS

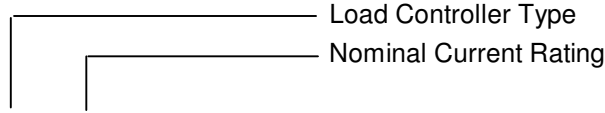
NOTES:

1. For other ratings or calibrations consult the factory.

2. For applications requiring higher shock and vibration, consult the factory.

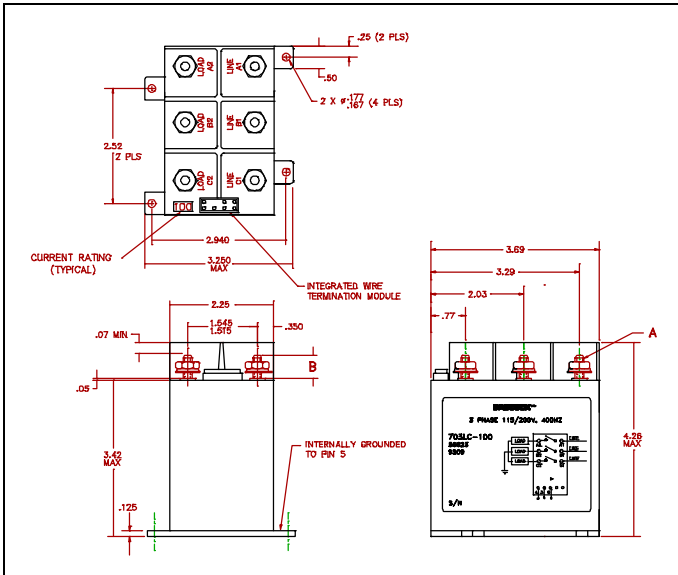
The 703LC Load Controllers are designed to handle even the toughest loads with exceptional current spike handling characteristics. The contact system utilizes the proven design in our RPC Current Sensors. The magnetic latching motor is designed to minimize power consumption.

The 703LC contact system can handle up to 3,600 Amperes of rupture current without any problem. The 703LC can withstand the rigors of even the noisiest of supply voltages. Utilizing all space age approved materials, the 703LC Load Controllers are ideal for demanding applications.



703LC - 100

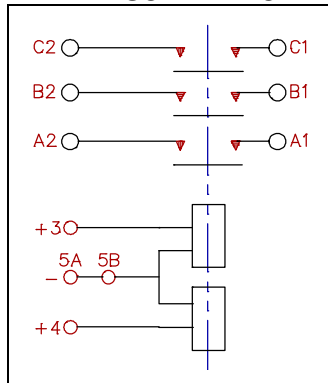
OVERALL DIMENSIONS



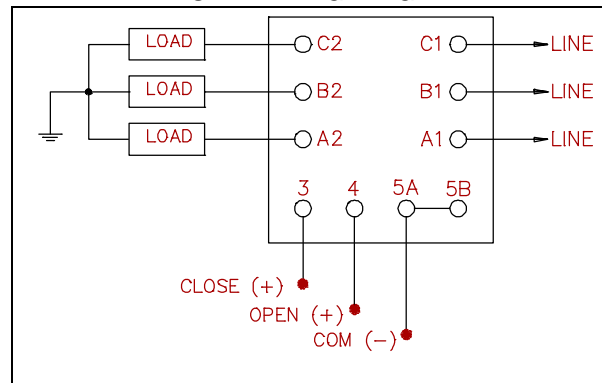
SELECTION TABLE

Catalog Number	Continuous Ampere Contact Rating	Thread "B"	Dimension "A"
703LC-5	5	10-32 UNF	.500
703LC-7.5	7.5	10-32 UNF	.500
703LC-10	10	10-32 UNF	.500
703LC-15	15	10-32 UNF	.500
703LC-20	20	10-32 UNF	.500
703LC-25	25	10-32 UNF	.500
703LC-35	35	1/4-28 UNF	.610
703LC-40	40	1/4-28 UNF	.610
703LC-50	50	1/4-28 UNF	.610
703LC-60	60	1/4-28 UNF	.610
703LC-75	75	1/4-28 UNF	.610
703LC-100	100	1/4-28 UNF	.610

SCHEMATIC



TYPICAL WIRING DIAGRAM



GENERAL NOTES

- Unless otherwise specified, all tests made at nominal coil voltages, @ 25°C.
- For special coil variations, switching configurations, terminals styles and mounting types, consult the factory.
- Unless otherwise specified, tolerances on decimal dimensions are $\pm .010$ ".
- Specifications contained herein are subject to change without notice.