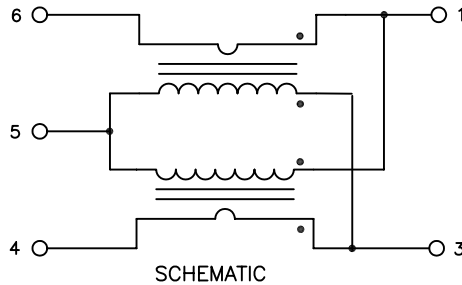


CX3123NL

- COUPLER
- 5–1200 MHz
- IMPEDANCE = 75 OHMS
- SURFACE MOUNT

NOTES: UNLESS OTHERWISE SPECIFIED

1. OPERATING TEMPERATURE: -40°C TO +85°C
2. STORAGE TEMPERATURE: -50°C TO +125°C
3. COMPLIANCE TO J-STD:
 - J-STD-002: SOLDERABILITY AT REFLOW PEAK TEMPERATURE OF 245°C
 - J-STD-020: MSL 1, NO MOISTURE SENSITIVE
 - J-STD-075: R6, 250°C MAXIMUM THROUGH REFLOW SOLDER
4. DIMENSIONS ARE IN INCHES.
 - TOLERANCE:
 - .XX ±.01
 - .XXX ±.005
5. OPTIONAL TAPE & REEL PACKAGING CAN BE ORDERED BY ADDING A "T" SUFFIX TO THE PART NUMBER. ie: CX3123NLT



ELECTRICAL SPECIFICATIONS: @ 25°C

INSERTION LOSS:

FREQUENCY	
5–870 MHz	-1.0 dB MAX
870–1002 MHz	-1.2 dB MAX
1002–1200 MHz	-1.6 dB MAX

COUPLING FORWARD:

FREQUENCY	
5–1002 MHz	-17.5 dB ± 1.0
1002–1200 MHz	-17.5 dB ± 1.0

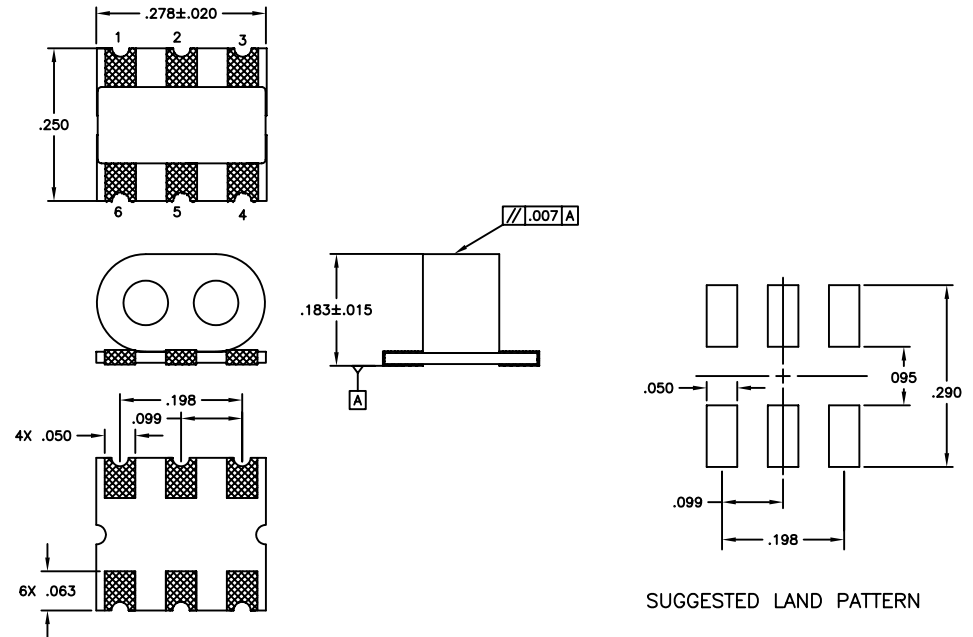
INPUT PORT RETURN LOSS:

FREQUENCY	
5–40 MHz	-22.0 dB MIN
40–1002 MHz	-20.0 dB MIN
1002–1200 MHz	-16.0 dB MIN

COUPLED PORT RETURN LOSS:

FREQUENCY	
5–40 MHz	-22.0 dB MIN
40–1002 MHz	-20.0 dB MIN
1002–1200 MHz	-18.0 dB MIN

MECHANICAL SPECIFICATIONS:



© Copyright, 2014. Pulse Electronics Corp. All rights reserved. Pulse confidential & proprietary. (08/14/2014)

PRODUCT DESCRIPTION:

CPLR, IND, 17.5DB, 5–1200MHz, SM

SHEET:

1 OF 1

PART NO.

CX3123NL

DATASHEET REV.

B