



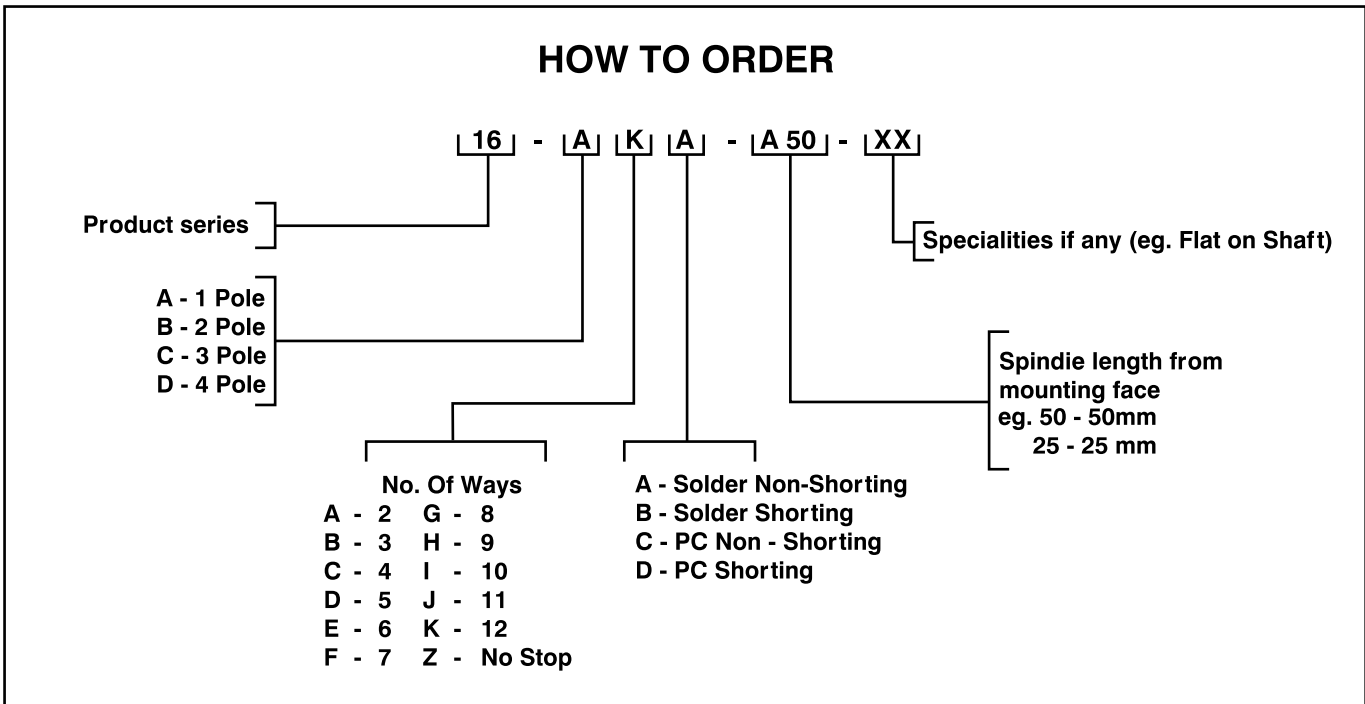
**O/E/N CK**

**MINIATURE ROTARY SWITCH**

- Cost effective single wafer switch
- Moulded 27.5 mm diameter
- Standard 30° Indexing
- Upto 4 poles
- Manufactured in association with Lorlin Electronics, UK

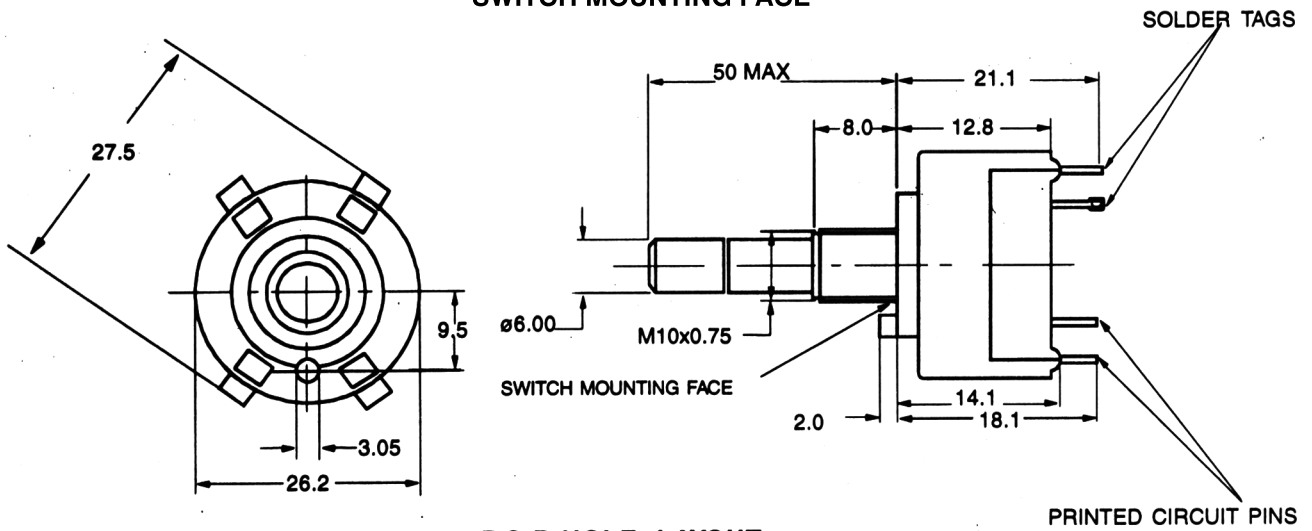
| GENERAL ELECTRICAL AND MECHANICAL SPECIFICATION |                             |                            |  |
|---|-----------------------------|----------------------------|--|
| Maximum working Voltage                         | : 300V AC/DC resistive load | Life                       | : Greater than 10,000 cycle                |
| Proof Voltage                                   | : 1,000 V RMS min.          | Operating Torque (nominal) | : Standard 5,6 Ncm<br>Light action 2.1 Ncm |
| Current Carrying Capacity                       | : 5A (non switching)        | End Stop Torque (Minimum)  | : 1.13 Nm                                  |
| Contact Rating (switching)                      | : 150 m A 250 V AC / DC     | Moulded Material           | : Glass filled nylon                       |
| Insulation Resistance                           | : 25,000 megohms min.       | Contact/Terminal Material  | : Silver plated Brass                      |
| Operating temperature                           | : 30°C to +85°C             |                            |  |

| OPTIONS AVAILABLE   |                                  |  |
|---|----------------------------------|--|
| <b>CIRCUITRY</b><br>1 Pole, 2 Pole, 3 Pole, 4 Pole upto 12 positions. | <b>TERMINALS</b><br>Solder / Pcb | <b>STOPS</b><br>Stops are adjustable from 2 - 12 positions.<br>Continuous rotation (No stops) available. |

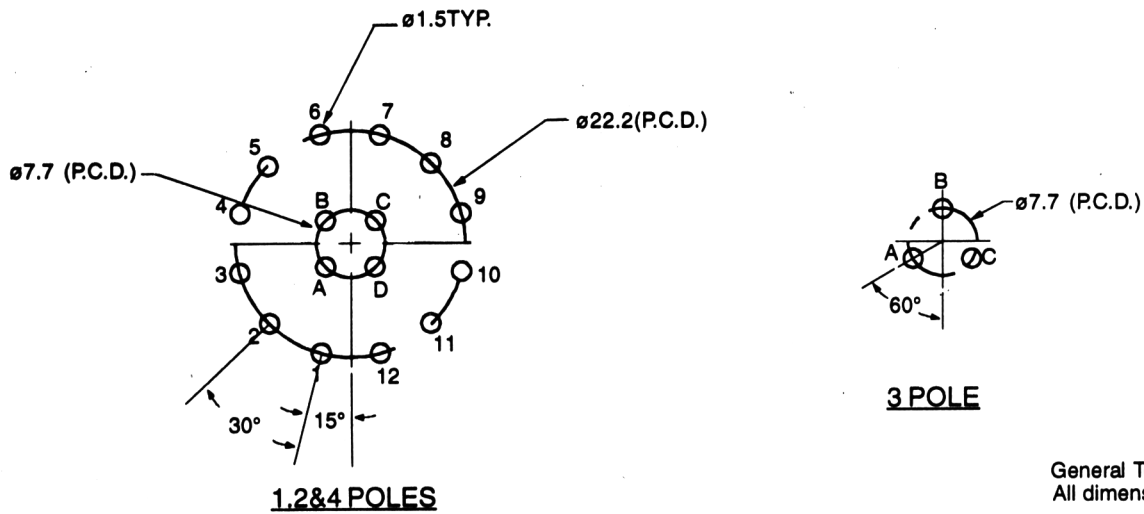


## GENERAL DIMENSIONAL DETAILS

### SWITCH MOUNTING FACE

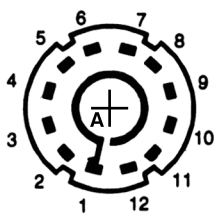


### P.C.B HOLE LAYOUT (COMP. SIDE)

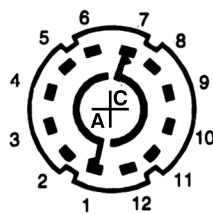


General Tolerance :  $\pm 0.2$   
All dimensions are in mm

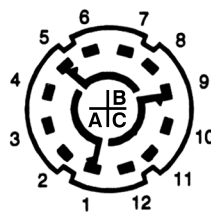
## STANDARD CIRCUIT CONFIGURATION



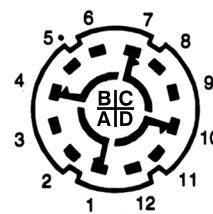
1 pole 12 way  
30° Throw



2 pole 6 way  
30° Throw



3 pole 4 way  
30° Throw



4 pole 3 way  
30° Throw

WAFERS VIEWED FROM FRONT OF SWITCH EXTREME ANTICLOCKWISE POSITIONS (POSITION 1)