

RUGGED GALAXY™ SERIES PURE-SINEWAVE DC-AC INVERTERS

Input: 62-84 VDC
Output: 120V or 220V 1Ø
50, 60, or 400 Hz
Power: 120 VA - 35+ KVA



APPLICATIONS

Utilizing field proven technology, this family of rugged pure sinewave DC-AC Inverters is suitable for harsh environments and can be customized for unique applications including:

- Shelters
- Rail
- Tactical Systems
- Ground support
- MIL-STD-810
- Utility Applications
- Mobile Systems
- MIL-STD-167
- MIL-STD-461



NOVA ELECTRIC
www.novaelectric.com
novasales@theallpower.com



A Leader in DC-AC Inverter Technology since 1966 - 120VA to 35+KVA

MADE IN USA

RUGGED PURE SINEWAVE DC-AC INVERTER

CAN MEET MIL-STD-810, MIL-STD-1399, MIL-S-901, MIL-STD-704, & MIL-STD-461 OPTIONALLY

APPLICATIONS

The transformer isolated Galaxy Series Inverters are extremely rugged by design, and feature an optional advanced Internal Suppression Filter Network (ISFN) to suppress the significant transients usually associated with rail and military applications. The units are also extremely reliable, designed to provide many years of service in harsh shock, vibration, humidity, and EMI environments.

HIGH-RELIABILITY

MTBF: 100,000 Hours
MTBR: 30 Minutes (assuming qualified tech)

STANDARD INDICATORS

- Output Volt & Amp Meters
- Input Power On Lamp

SPECIFICATIONS

ELECTRICAL

Input: 62 - 84VDC
Output: specify 120 or 220VAC 1Ø
(Three-Phase Output Optional)
Frequency: Specify 50, 60, or 400Hz
Voltage Regulation: $\pm 2\%$ NL to FL
Frequency Regulation: $\pm 0.5\%$ NL to FL
Harmonic Distortion: 5% THD
Power Factor: 0.7 lead to 0.7 lag
Efficiency at full load: 75-88% typical
Overload: 125% for 5 minutes

PROTECTIVE FEATURES

Current Limit, Short Circuit Protection, Thermal Protection, Semiconductor Protection, and (Optional) ISFN

ENVIRONMENTAL

Operating Temp.: -20° to $+50^{\circ}$ C (extended range optional)
Storage Temp. Range: -40° to $+71^{\circ}$ C
Humidity: to 95% non-condensing
Elevation: 15,000 Ft. (4,572m) operating;
40,000 ft. (12,192m) non-operating
Shock: 20g for 11mS half sinewave
Audible Noise: Less than 55 dbA at 5 ft.

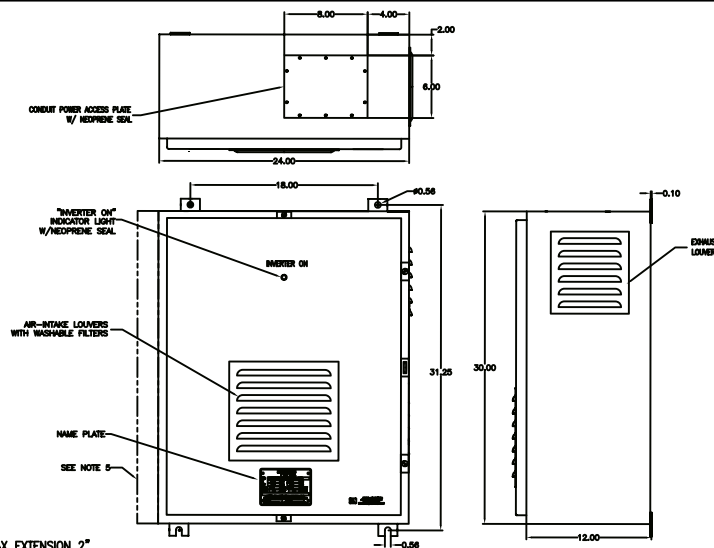
OPTIONS

- Ruggedization against shock, vibration and humidity
- Additional Meters
- Input Transient Filter (ISFN)
- Transfer Switch
- Floor Mount Feet

PARTIAL MODEL SELECTION

| 60 HZ MODELS | OUTPUT VAC | OUTPUT FREQ(HZ) | CONTINUOUS OUPUT POWER | APPROX. WEIGHT(LB) | SIZE (HxWxL) INCHES |
|--------------|------------|-----------------|------------------------|--------------------|---------------------|
| GH5060-72 | 120 | 60 | 500VA | 95 | 24"x20.75"x7.15" |
| GH1K60-72 | 120 | 60 | 1KVA | 95 | 24"x20.75"x7.15" |
| GH2K60-72 | 120 | 60 | 2KVA | 120 | 30"x24"x8" |
| GH3K60-72 | 120 | 60 | 3KVA | 130 | 30"x24"x12" |
| GH5K 60-72 | 120 | 60 | 5KVA | 140 | 30"x24"x12" |
| GH7.5K60-72 | 120 | 60 | 7.5KVA | 175 | 36"x24"x16" |
| GH10K60-72 | 120 | 60 | 10 KVA | 260 | 36"x24"x16" |
| GH15K60-72 | 120 | 60 | 15 KVA | 350 | 42"x30"x21.20" |
| GH20K60-72 | 120 | 60 | 20 KVA | C/F | 42"x30"x21.20" |
| GH25K60-72 | 120 | 60 | 25KVA | C/F | 54"x36"x16" |
| GH30K60-72 | 120 | 60 | 30KVA | C/F | 54"x36"x16" |
| GH35K60-72 | 120 | 60 | 35KVA | C/F | 54"x36"x16" |

Typical 3-6KVA chassis



- NOTES:
1. INVERTER CABINET HAS (4) MTG EARS.
 2. FINISH: ANSI #61 GRAY, SEMI-GLOSS.
 3. ENCLOSURE TYPE: NEMA 12, P/N SCE-302410LP
 4. CERTAIN APPLICATIONS REQUIRE EXTERNAL HEATSINK ON LEFT SIDE - MAX EXTENSION 2".

WEB : www.novaelectric.com
E-Mail : novasales@theallpower.com
PHONE : (201) 385-0500 FAX : (201) 385-0702



NOVA ELECTRIC
A Division of
TECHNOLOGY DYNAMICS, INC.
100 School St., Bergenfield NJ 07621

