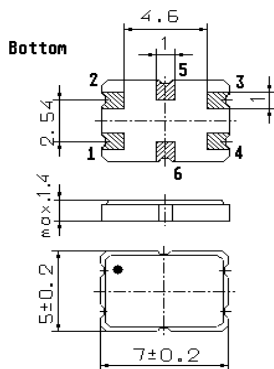


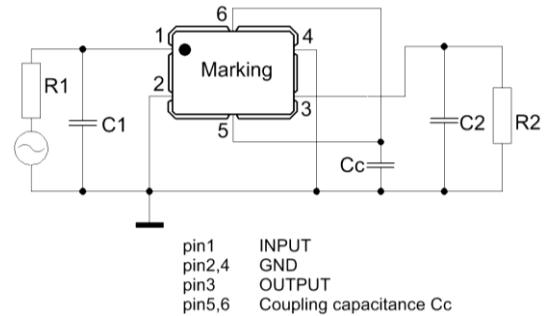
Specification for monolithic crystal filter: **MQF 73.125 - 1500/02**

## 1. General

### 1.1. Package:



**GS 2**



- |                                   |                    |
|-----------------------------------|--------------------|
| 1.2. Type name:                   | MQF 73.125-1500/02 |
| 1.3. Number of poles:             | 4                  |
| 1.4. Operating temperature range: | -30°C to +85°C     |
| 1.5. Storage temperature range:   | -40°C to +85°C     |

## 2. Electric values

- |   |   |
|---|---|
| 2.1. Nominal centre frequency fo:   | 73.125 MHz                                    |
| <b>2.2. Pass band</b>   |   |
| 2.2.1. Bandwidth between 3 dB - frequencies:                                | $> f_o \pm 7.5$ kHz                           |
| 2.2.2. Ripple:  | $< 1.0$ dB at $f_o \pm 4.5$ kHz               |
| 2.2.3. Insertion loss:<br>( measured on smallest attenuation in pass band ) | $< 5.0$ dB                                    |
| <b>2.3. Stop band</b>   |   |
| 2.3.1. $f_o \pm 25$ kHz   | $> 20$ dB                                     |
| 2.3.2. $f_o \pm 50$ kHz   | $> 40$ dB                                     |
| 2.3.3. alternate attenuation  | $f_o \pm 100$ kHz $> 50$ dB (except spurious) |
|   | $f_o \pm 1000$ kHz $> 70$ dB                  |
| 2.4. Group delay distortion   | $f_o \pm 7.5$ kHz $< 35$ $\mu$ s              |
| 2.4.1. Absolute Group delay   | $f_o$ $< 65$ $\mu$ s                          |
| 2.5. Terminating impedance R/C ( input and output ):                        | 350 $\Omega$ // 2.5 pF                        |
| 2.5.1. Coupling capacitance   | 13 pF   |
| 2.6. Input power level for reference measurement:                           | 0 dBm   |
| 2.6.1. Maximum input power level without destruction:                       | +10 dBm                                       |
| <b>2.7. Out band Intermodulation</b>  |   |
| 2.7.1. frequency 1:   | $f_o \pm 50$ kHz                              |
| 2.7.2. frequency 2:   | $f_o \pm 100$ kHz                             |
| 2.7.3. Input power level:   | -24 dBm                                       |
| 2.7.4. IM:  | $> 75$ dB                                     |
| 3. Marking:   | • M73125<br>yyww                              |
| 4. Environment conditions:  | Corresponding to Vectron standard CF001       |
| 5. Filters are Pb-free and 2002 /95 / EC RoHS compliant                     |   |

Edited by: \_\_\_\_\_ date: \_\_\_\_\_ name: \_\_\_\_\_