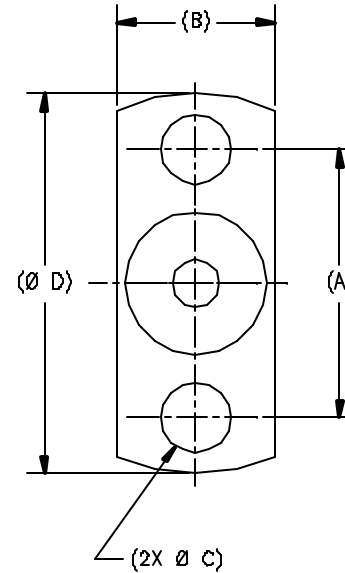
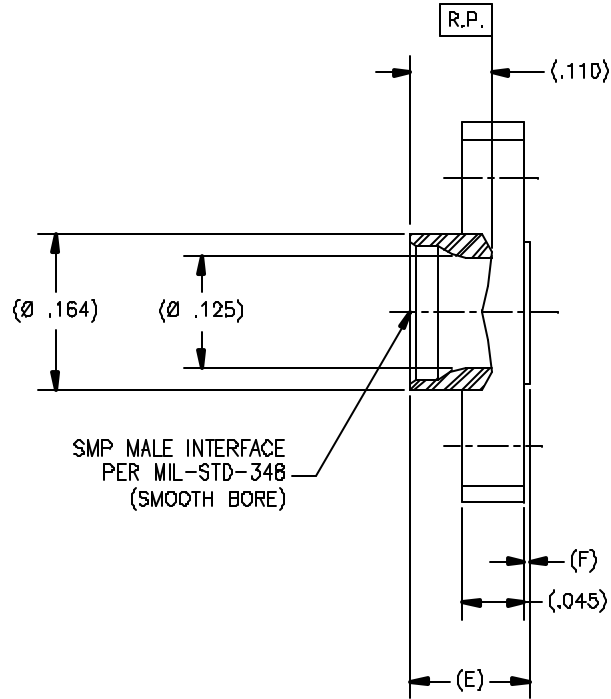


| P/N  | APP. NOTES | (A)  | (B)  | (Ø C) | (Ø D) | (E)  | (F)  |
|------|------------|------|------|-------|-------|------|------|
| -1SF | 1,2        | .328 | .187 | .098  | .480  | .120 | .004 |
| -2SF | 1,2        | .481 | .223 | .102  | .625  | .120 | .002 |
| -3SF | 1,2        | .282 | .165 | .073  | .400  | .120 | .002 |

| REVISIONS |     |             |          |     |
|-----------|-----|-------------|----------|-----|
| ZONE      | REV | DESCRIPTION | DATE     | BY  |
| -         | C   | ECD 11725   | 06/27/00 | IMG |
| -         | D   | ECD 12292   | 10/03/00 | IMG |
| -         | E   | ECD 12360   | 10.10.00 | ATV |



|             |      |
|-------------|------|
| DRAWING NO. | REV. |
| P673        | E    |

NOTE(S):

1. MATERIAL: 303 SST PER ASTM A-582
2. FINISH: PASSIVATED PER ASTM A-967

**NOTICE**  
 THIS DRAWING IS THE PROPERTY OF TENSOLITE COMPANY AND ALL DESIGN, MANUFACTURING, REVISION, USE, AND SALE RIGHTS, INCLUDING THE BASIC AND DERIVATIVE RIGHTS, ARE RESERVED. NO PART OF THIS DRAWING IS TO BE REPRODUCED OR TRANSMITTED IN ANY FORM OR BY ANY MEANS, ELECTRONIC OR MECHANICAL, INCLUDING PHOTOCOPYING, RECORDING, OR BY ANY INFORMATION STORAGE AND RETRIEVAL SYSTEM, WITHOUT THE WRITTEN PERMISSION OF TENSOLITE COMPANY, LONG BEACH, CALIFORNIA 90815.

**TOLERANCES AND NOTES EXCEPT AS NOTED**  
 DIMENSIONS ARE IN INCHES  
 LINEAR .01 ±.008  
 ANGULAR ± 1/2°  
 RADIATION ± 1/32"

1. MACHINE FINISH ✓ FINE
2. BREAK ALL SHARP CORNERS AND RADIUS.
3. MACHINED FILLETS .005 MAX.
4. MACHINED SURFACES BEARING TO RESPECTIVE AXIS FINISH .300 INCHES PER INCH.
5. MACHINED DIMENSIONS CONCENTRIC WITH SIZE TOLER.
6. DIMENSIONS TO BE MET BEFORE PLATING.
7. DIMENSIONS FOR ALL SURFACES .45°.
8. BRASS FOR H-58.
9. REMOVE FRAYED EDGES ON TEFLON.
10. REMOVE ALL BURRS.

| MATERIAL          | SIZE     | PREPARATION   | PROCUREMENT           |
|-------------------|----------|---|-----------------------|
| 303 SST           |          |   |                       |
| APPROVAL INITIALS | DATE     | TITLE   |                       |
| BRD               | 02/15/96 | SMP SHROUD SMOOTH BORE STRAIGHT 2 HOLE FLANGE MOUNT |                       |
| CHECKED           |          | SCALE   | SUB-ORDINATE/REVISION |
| QUALITY           |          | 10/1  | 01P6XX\01P673         |
| ENGINEERING       | ATV      | DATE CODE   | SHEET 1 OF 1          |
|                   | 10.10.00 | DRAWING NO.   | P673                  |
|                   |          | REV.  | E                     |