

PLEASE CHECK WWW.MOLEX.COM FOR LATEST PART INFORMATION

Part Number: [1705109807](#)
Status: **Active**
Overview: [Impact™ Backplane Connector and Cable Assembly System](#)
Description: Impact™ 85 Ohm Plus 3 Pair, RAM Signal Module, Right Guide, Dual Endwalls, 8 Columns, 72 Circuits, Plated Through Hole Dimension 0.39mm, Pin Length 4.90mm, Lead Free

Documents:

[Drawing \(PDF\)](#) [Application Specification AS-76060-990-001 \(PDF\)](#)
[Product Specification PS-170540-999-001 \(PDF\)](#) [RoHS Certificate of Compliance \(PDF\)](#)

Agency Certification

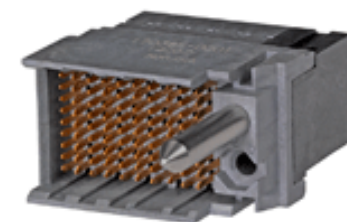
UL E29179

General

Product Family Backplane Connectors
Series [170510](#)
Application Coplanar
Application Tooling Documents TM-622018799
Component Type PCB Header
Overview [Impact™ Backplane Connector and Cable Assembly System](#)
Product Name Impact™
UPC 887191401706

Physical

Circuits (Loaded) 72
Circuits (maximum) 72
Color - Resin Gray
Durability (mating cycles max) 200
First Mate / Last Break No
Flammability 94V-0
Guide to Mating Part Yes
Keying to Mating Part None
Material - Metal High Performance Alloy (HPA)
Material - Plating Mating Gold
Material - Plating Termination Tin
Material - Resin High Temperature Thermoplastic
Net Weight 12.400/g
Number of Columns 8
Number of Pairs 3
Number of Rows 9
Orientation Right Angle
PC Tail Length 1.20mm
PCB Locator No
PCB Retention None
PCB Thickness - Recommended 1.00mm
Packaging Type Tray
Pitch - Mating Interface 1.35mm, 1.90mm
Pitch - Termination Interface 1.35mm, 1.90mm
Plating min - Mating 0.762µm
Polarized to PCB No
Stackable No
Surface Mount Compatible (SMC) No
Temperature Range - Operating -55°C to +85°C
Termination Interface: Style Through Hole - Compliant Pin



Series image - Reference only

EU ELV

Not Relevant

EU RoHS

Compliant

REACH SVHC

Not Contained Per -
ED/21/2016 (20 June
2016)

Halogen-Free

Status

Low-Halogen

Need more information on product environmental compliance?

Email productcompliance@molex.com
Please visit the [Contact Us](#) section for any non-product compliance questions.

China ROHS

ELV

RoHS Phthalates

Green Image

Not Relevant

Not Contained

Search Parts in this Series

[170510](#) Series

Mates With

[170340](#) Impact™ 85 Ohm Plus Right Angle Daughtercard

Application Tooling | FAQ

Tooling specifications and manuals are found by selecting the products below. Crimp Height Specifications are then contained in the Application Tooling Specification document.

Global

Description

Product #

Daughter Card
Module Installation
Press-In Tool for 3-Pair by 8-Column Assemblies

[0622018675](#)

Electrical

Current - Maximum per Contact	0.75A
Data Rate	25.0 Gbps
Impedance	85Ω
Shield Type	N/A
Shielded	No
Voltage - Maximum	30V AC (RMS)/DC

Solder Process Data

Lead-free Process Capability	N/A
------------------------------	-----

Material Info**Reference - Drawing Numbers**

Application Specification	AS-76060-990-001
Electrical Model Document	EE-170510-0001
Product Specification	PS-170540-999-001
S-Parameter Model	SP-170510-0001
Sales Drawing	SD-170510-0004
Symbol/Footprint Data	SYM-170510-9807

This document was generated on 01/23/2017

PLEASE CHECK WWW.MOLEX.COM FOR LATEST PART INFORMATION