

45-DBFE Series



FEATURES:

- AC Input 90~305 Vac Nominal
- Protection: SCP / OVP / OTP
- High Operating Ambient Temp.: -20°C~+60°C
- Power Factor: > 0.95 @ 115 VAC / > 0.9 @ 277 VAC
- T.H.D: <20%
- Surge Protection: L-N 1 kV, L/N-FG 2 kV
- Safety: Meets UL
- EMI: Meets CE / Meets FCC
- Surge: Line to Line 2 kV; Line to FG 4kV
- Comply with Indoor/Outdoor Waterproof (IP 67)
- Warranty: 5 years (refer to LinkCom warranty policy)
- RoHS Compliant

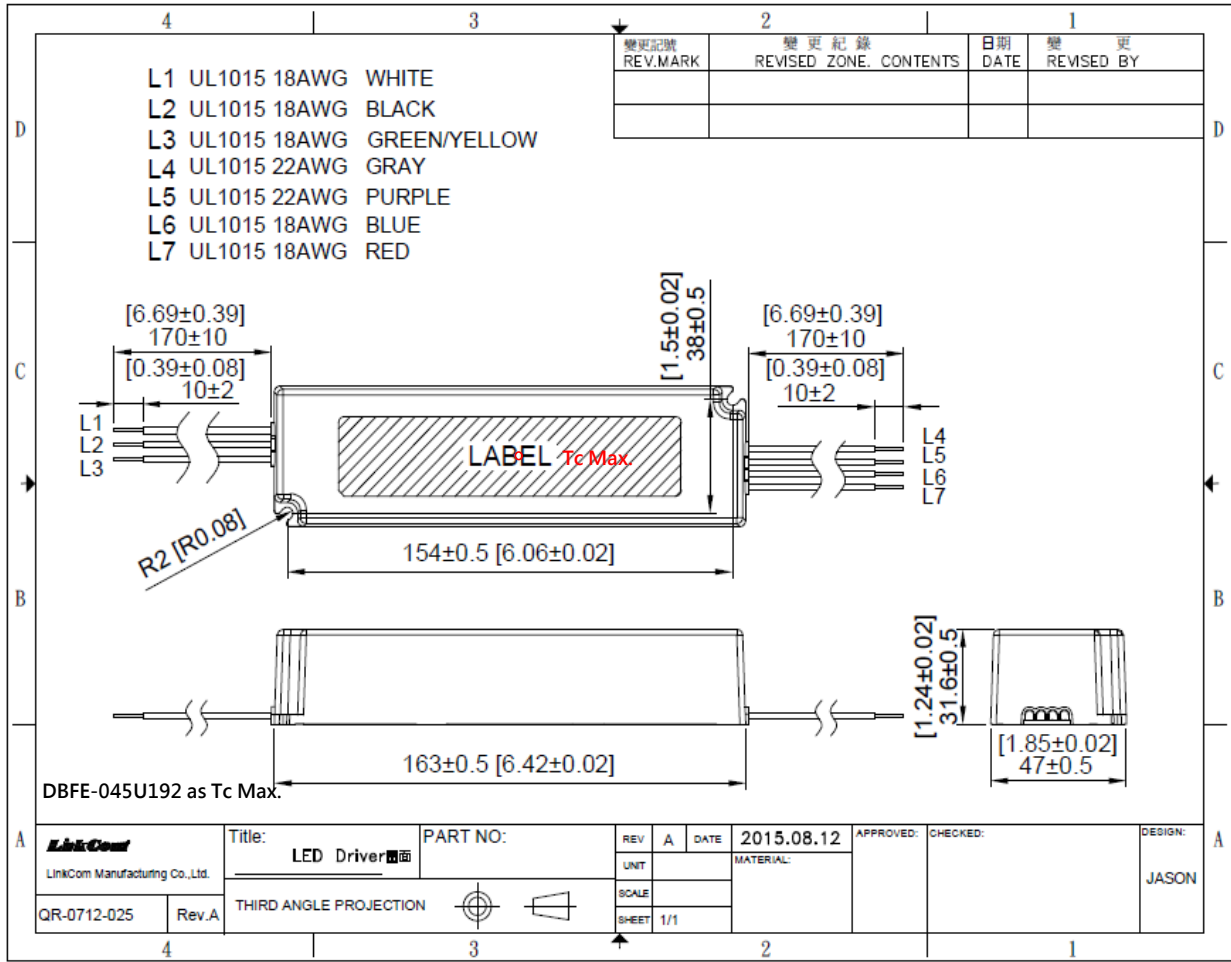
PRODUCT SPECIFICATION						
MODEL	DC OUTPUT POWER(W)	DC OUTPUT VOLTAGE(V)	OUTPUT CURRENT(A)	OUTPUT CURRENT TOLERANCE	EFFICIENCY	O/P NOISE(P-P, V)
DBFE-045U172-00	42	14-24	1.75	±5%	84%	2.5
DBFE-045U192-00	45.6	14-24	1.9	±5%	84%	2.5

ELECTRICAL SPECIFICATION	
INPUT VOLTAGE RANGE	90-305 Vac, 127-431 Vdc, Normal: 100-277 Vac
INPUT FREQUENCY	Range: 47-63 Hz, Normal: 50-60 Hz
ACTIVE POWER FACTOR	> 0.95 @ 115 Vac / > 0.9 @ 277 Vac
THD	< 20%
TURN ON DELAY TIME	3000 ms at Full Load 115 Vac / 230 Vac
AC CURRENT	0.7 A / 100 Vac
INRUSH CURRENT (typ)	COLD START 43 A @ 230 Vac
LEAKAGE CURRENT	0.75 mA / 264 Vac
SHORT CIRCUIT PROTECTION	SCP will restart automatically after the fault condition is removed
OVER VOLTAGE PROTECTION	OVP will restart automatically after the fault condition is removed
OVER TEMP. PROTECTION	OTP will restart automatically after the fault condition is removed
OVER CURRENT PROTECTION	NA
OPERATING TEMP.	-20°C ~ +60 °C @ Full Load
STORAGE TEMP.	-40°C ~ +80°C
RELATIVE HUMIDITY	10% to +90%, non-cond.
SAFETY	Meets UL 60950-1
EMI	Meets FCC Part15 / Meets EN55015
WITHSTAND VOLTAGE	I/P-O/P: 4.242 kVdc , I/P-FG: 2.5 kVdc, I/P-CASE: 2.5 kVdc
ISOLATION RESISTANCE	I/P-O/P: 100M Ω / 500 Vdc / 25°C / 70% RH
DIMENSION (L*W*H)	163 * 47 * 31.6 mm 【6.42 * 1.85 * 1.24 inch】

- (1) All parameters specified at 230 Vac input unless otherwise noted.
- (2) All specifications Typical at 25°C, unless otherwise noted, at normal line and load.
- (3) Ripple and Noise measured directly at pins/terminals at nom. load, pk-pk at 20MHz bandwidth.
- (4) Specified for free-air convection cooling.
- (5) Minimum load is NOT required for proper operation .
- (6) 100% Production Tested.

* REFERENCE: www.linkcom.com.tw
 * Please contact sales@linkcom.com.tw, sales@linkcomusa.com for more information

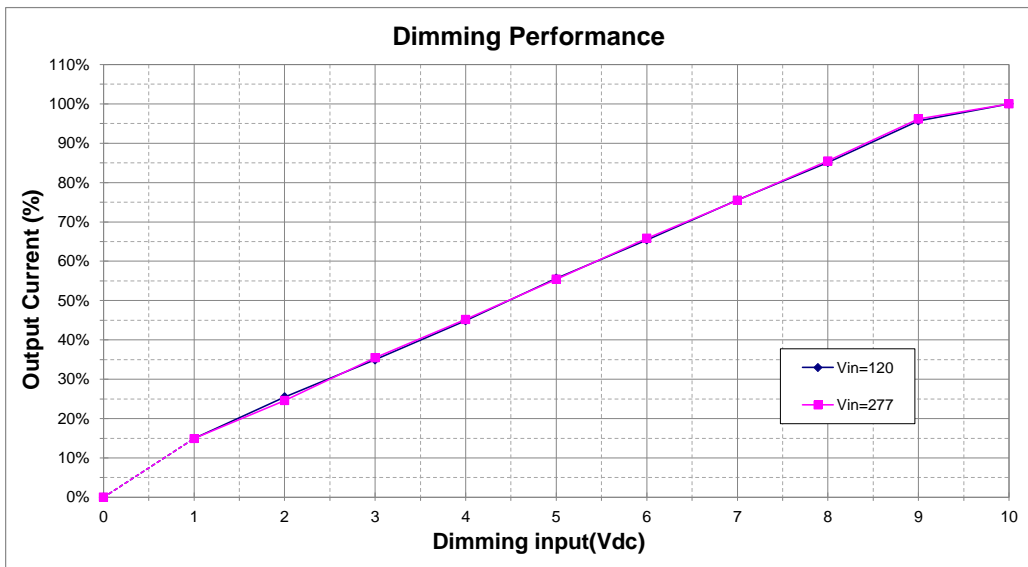
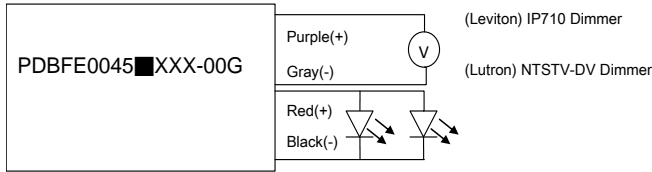
DIMENSIONS



* REFERENCE: www.linkcom.com.tw

DIMMING OPERATION

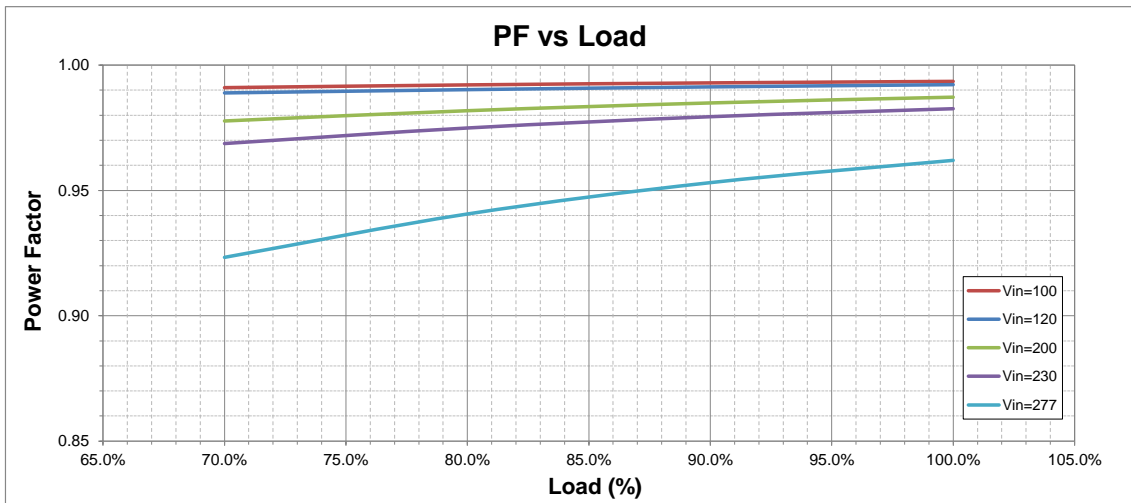
Parameters	Minimum	Typical	Maximum
Absolute maximum voltage on the 0-10(+) Purple Wire	1V	—	10V
Source current on the 0-10V(+) Purple Wire	0.1mA	—	1mA



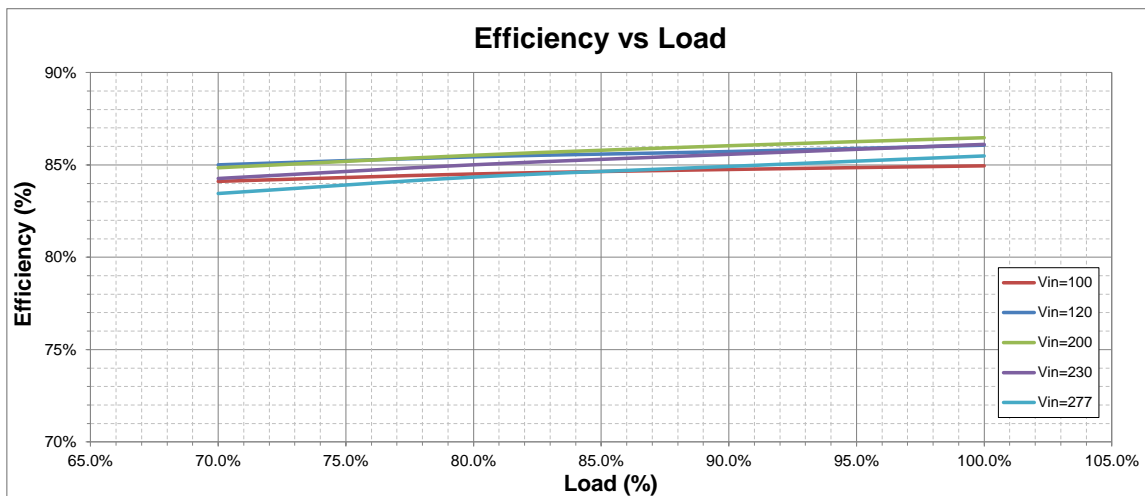
Notes:

1. Purple and Gray wires on the output side are used for 0-10V dimming
2. When connected to different Dimmers, 0-10V dimmable version will have a ±10% output current tolerance.
3. Recommended dimmers are Leviton IP710, Lutron NTSTV-DV or equivalent.
4. When dimming wires +Purple/-Gray are left open, the output current will be at 100%.

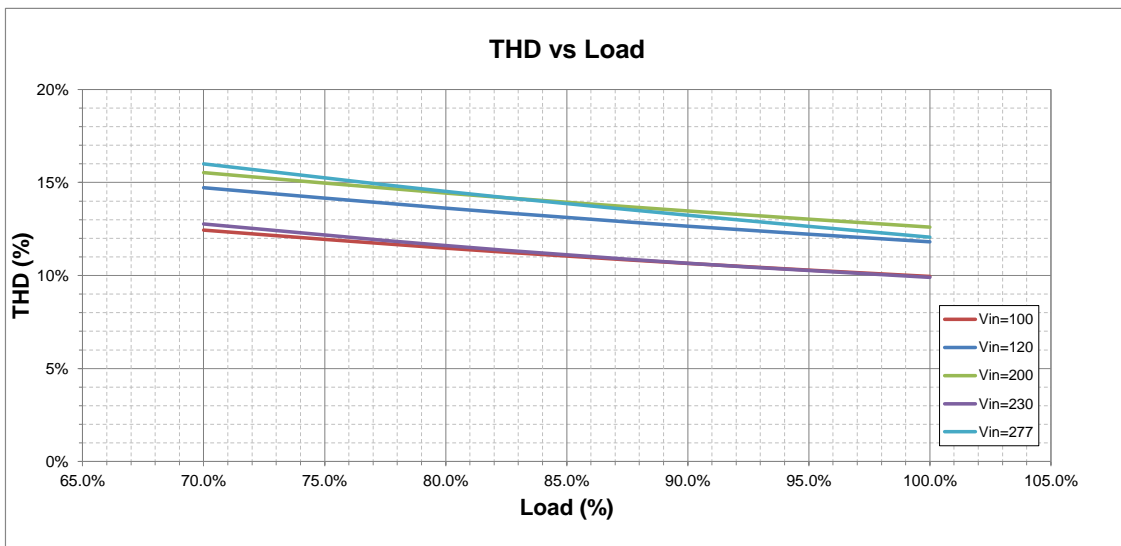
Power Factor vs. Load (DBFE-045U192-00)



Efficiency vs. Load (DBFE-045U192-00)



T.H.D vs. Load (DBFE-045U192-00)



Output Current VS Load (DBFE-045U192-00)

