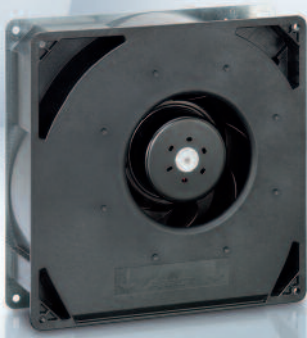


Max. 444 m<sup>3</sup>/h

# DC centrifugal fans

□ 220 x 56 mm



- **Material:** Scroll housing: GRP<sup>1)</sup>  
Impeller: GRP<sup>1)</sup>  
Base plate: Sheet steel
- **Direction of air flow:** Axial: Intake,  
Centrifugal: Exhaust
- **Connection:** Via single wires AWG 22, TR 64  
48 V model: Flat plug  
6.3 x 0.8 mm for ground  
conductor
- **Highlights:** Smoothly operating 3-phase  
fan drive  
Backward-curved impeller
- **Weight:** 1.4 kg

- **Possible special versions:**  
(See chapter DC fans - specials)
  - Speed signal
  - Go / NoGo alarm
  - Alarm with speed limit
  - External temperature sensor
  - Internal temperature sensor
  - PWM control input
  - Analog control input
  - Humidity protection
  - Degree of protection: IP 54

1) Fiberglass-reinforced plastic

Series RG 160 NTD

Nominal data

| Type                                | Air flow          |      | Nominal voltage |         | Voltage range | Sound power level | Sintec sleeve bearings<br>Ball bearings | Power consumption | Nominal speed | Temperature range | Service life L <sub>10</sub> (40 °C)<br>ebm-papst standard | Service life L <sub>10</sub> (T <sub>max</sub> )<br>ebm-papst standard | Life expectancy L <sub>10</sub> (IPC<br>(40 °C) see page 17 | Curve |
|-------------------------------------|-------------------|------|-----------------|---------|---------------|-------------------|---|-------------------|---------------|-------------------|--|--|---|-------|
|                                     | m <sup>3</sup> /h | cfm  | VDC             | VDC     |               |                   |   |                   |               |                   |  |  |   |       |
| Min.<br>Max.<br>RG 160-28/14 NTD... | 59                | 34.7 | 24              | 16...28 | —             | 7.5               | ■                                       | 2.0               | 800           | -20...+60         | 55 000 / 35 000  | 92 500   | ①   |       |
|                                     | 308               | 181  |                 |         |               |                   |   |                   |               |                   |  |  |   |       |
| RG 160-28/14 NTD                    | 308               | 181  | 24              | 16...28 | 7.5           | ■                 | 64                                      | 4 200             | -20...+60     | 55 000 / 35 000   | 92 500   | ②  |   |       |
| RG 160-28/14 NTDH                   | 370               | 218  | 24              | 16...28 | 7.8           | ■                 | 101                                     | 5 000             | -20...+60     | 50 000 / 32 500   | 85 000   | ③  |   |       |
| Min.<br>Max.<br>RG 160-28/18 NTD... | 59                | 34.7 | 48              | 38...57 | —             | 7.5               | ■                                       | 2.0               | 800           | -20...+70         | 55 000 / 27 500  | 92 500   | ①   |       |
|                                     | 308               | 181  |                 |         |               |                   |   |                   |               |                   |  |  |   |       |
| RG 160-28/18 N/2 TDHHP*             | 444               | 261  | 48              | 36...60 | 8.5           | ■                 | 159                                     | 6 000             | -20...+65     | 40 000 / 22 500   | 67 500   | ④  |   |       |

Subject to change

Models RG 160-28/14 NTD... and RG 160-28/18 NTD... are available in customer-specific, custom-developed variants only. The figures indicated are technically feasible benchmark values. The fans can be specially adapted to your application with signal outputs and control inputs. \*The specific service life is valid when an external capacitor is wired between the positive and negative wires. Please note the wiring suggestion.

