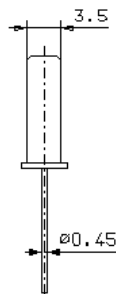
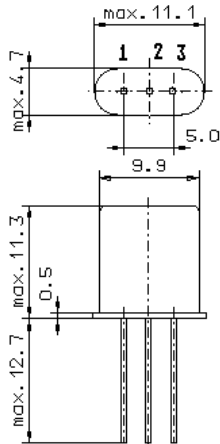


Specification for monolithic crystal filter:

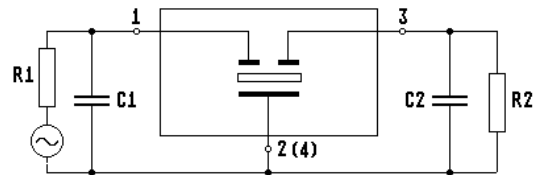
MQF 16.0-0750/01

1. General

1.1. Package:



GH3



- | | |
|-----------------------------------|------------------|
| 1.2. Type name: | MQF 16.0-0750/01 |
| 1.3. Number of poles: | 2 |
| 1.4. Operating temperature range: | -20°C to +70°C |
| 1.5. Storage temperature range: | -45°C to +85°C |

2. Electric values

- | | |
|---|---|
| 2.1. Nominal centre frequency f_0 : | 16.0 MHz |
| 2.2. Pass band | |
| 2.2.1. Bandwidth between 3 dB - frequencies: | $> f_0 \pm 3.75$ kHz |
| 2.2.2. Ripple: | < 1.0 dB at $f_0 \pm 2.5$ kHz |
| 2.2.3. Insertion loss:
(measured on smallest attenuation in pass band) | < 2.0 dB |
| 2.3. Stop band | |
| 2.3.1. $f_0 \pm 55$ kHz | > 40 dB |
| 2.3.2. Alternate Attenuation | > 40 dB (except spurious) |
| 2.4.1. Nominal input power level | +10 dBm |
| 2.4.2. Maximal input power level | +30 dBm |
| 2.5. Terminating impedance R/C (input and output): | $850 \Omega // 9.0$ pF |
| 3. Marking: | manufacturer, date code
16.0-
0750/01 |
| 4. Environment conditions: | Corresponding to Vectron standard CF001 |

Edited by: _____ date: _____ name: _____