

CDM22010-650

650V, 10A N-Channel Power MOSFET in the TO-220 package

TO-220



Central Semiconductor's **CDM22010-650** is a high current, 650 Volt N-Channel power MOSFET designed for high voltage, fast switching applications such as Power Factor Correction (PFC), lighting and power inverters. This MOSFET combines high voltage capability with low $r_{DS(ON)}$, low threshold voltage and low gate charge.

Features:

- High voltage capability
- Low gate charge
- Low $r_{DS(ON)}$

Applications:

- Power Factor Correction (PFC)
- Motor drives
- Alternative energy inverters
- Solid state lighting

Benefits:

- Energy efficiency
- High power density

Also available:

Surface Mount 650V MOSFETs

CDM4-650
(4.0A, N-Channel)



CDM7-650
(7.0A, N-Channel)

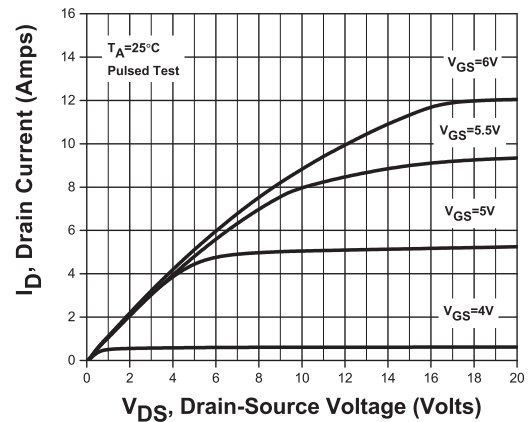


DPAK package

www.centrasemi.com/CDM_Series

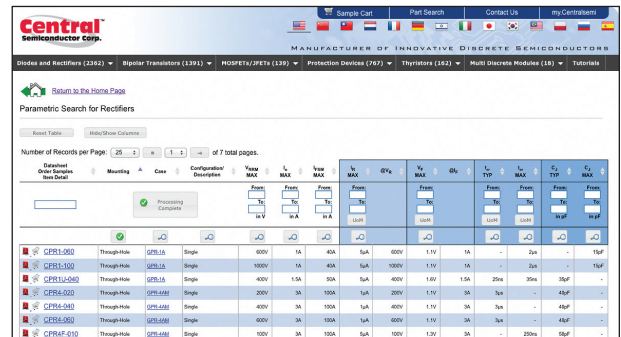
Typical Electrical Characteristics

Output Characteristics



Looking for other through-hole devices?

Easily search for through-hole devices with Central's online Parametric Search.
www.centrasemi.com/parasearch



Maximum Ratings ($T_A = 25^\circ\text{C}$ unless otherwise noted)				Electrical Characteristics: ($T_A = 25^\circ\text{C}$ unless otherwise noted)										
I_D (A)	P_D (W)	T_J, T_{stg} ($^\circ\text{C}$)	θ_{JA} ($^\circ\text{C/W}$)	BV_{DSS} (V)	$V_{GS(th)}$ (V)			$r_{DS(ON)}$ (Ω)		@ V_{GS} (V)	@ I_D (A)	Q_{gs} (nC)	C_{iss} (pF)	C_{rss} (pF)
MAX	MAX	MAX	MAX	MIN	MIN	TYP	MAX	TYP	MAX			TYP	TYP	TYP
10	2.0	-55 to +150	62.5	650	2.0	2.8	4.0	0.88	1.0	10	5.0	8.0	1168	1.2

Services:

- Bonded Inventory
- Custom Electrical Screening
- Custom Electrical Characteristic Curves
- SPICE Models
- Custom Packaging
- Package Base Options
- Custom Device Development/
Multi Discrete Modules (MDM™)

Weblink/Samples:



For more information
or to request
samples visit:

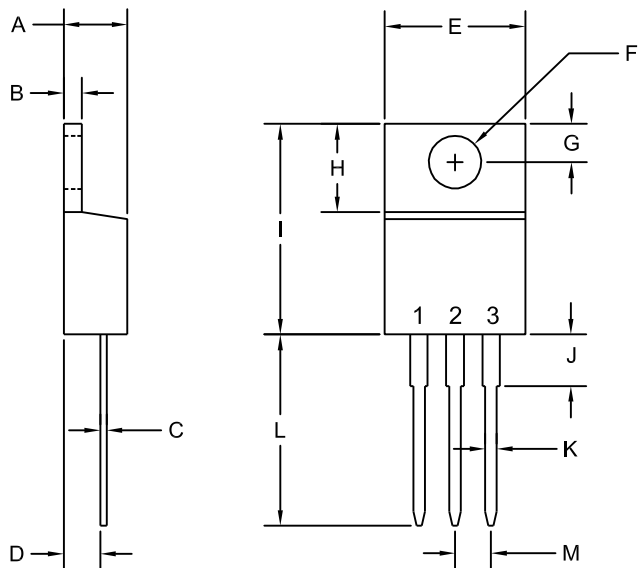


www.centrasemi.com/info/THHPMOSFET

CDM22010-650

650V, 10A N-Channel Power MOSFETs in the TO-220 package

Mechanical Drawing - TO-220

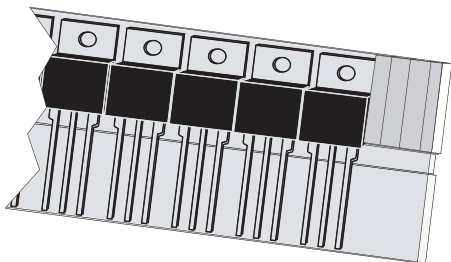


SYMBOL	INCHES		MILLIMETERS	
	MIN	MAX	MIN	MAX
A	0.170	0.190	4.31	4.82
B	0.045	0.055	1.15	1.39
C	0.013	0.026	0.33	0.65
D	0.083	0.107	2.10	2.72
E	0.394	0.417	10.01	10.60
F (DIA)	0.140	0.157	3.55	4.00
G	0.100	0.118	2.54	3.00
H	0.230	0.270	5.85	6.85
I	0.560	0.625	14.23	15.87
J	-	0.250	-	6.35
K	0.025	0.038	0.64	0.96
L	0.500	0.579	12.70	14.70
M	0.090	0.110	2.29	2.79

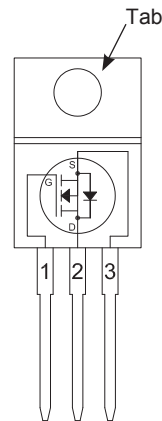
TO-220 (REV: R2)

R2

Sleeve Packaging



Pinout



LEAD CODE:

- 1) Gate
- 2) Drain
- 3) Source
- Tab) Drain

MARKING CODE:

CDM10-650

Packaging Base / Ordering Information

Sleeve (Suffix SL)	Quantity	Central Item No.
	50	CDM22010-650 SL

e-newsletter

Stay up to date on Central's latest new products:

Subscribe to Central's
eNewsletter



Central™ *Innovative Discrete Semiconductors*
Semiconductor Corp.

For further information contact:
Sales at Central Semiconductor Corp.
(631) 435-1110 or visit:
www.centrasemi.com