

Power Detectors

Applications

- RF Power Monitor
- Output Load Return Loss

Features

- Military Grade
- 0.8 – 2.5 GHz
- Low Insertion Loss
- Low VSWR
- -40C to +85C Operation
- 140 Watts
- 12 Bit Serial Word Outputs (2)
- N Type Connectors w/ Flexible Cables
- Rugged Aluminum Housing

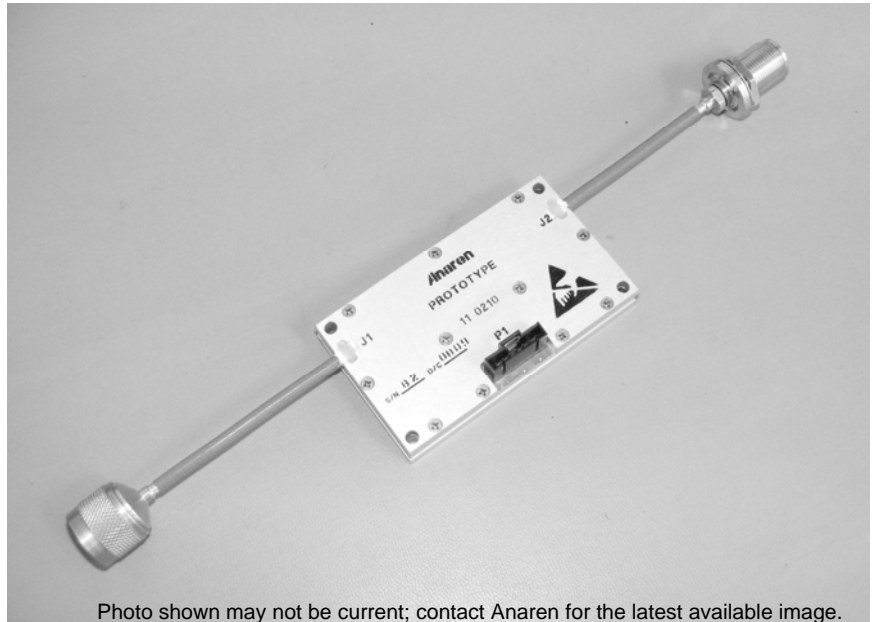
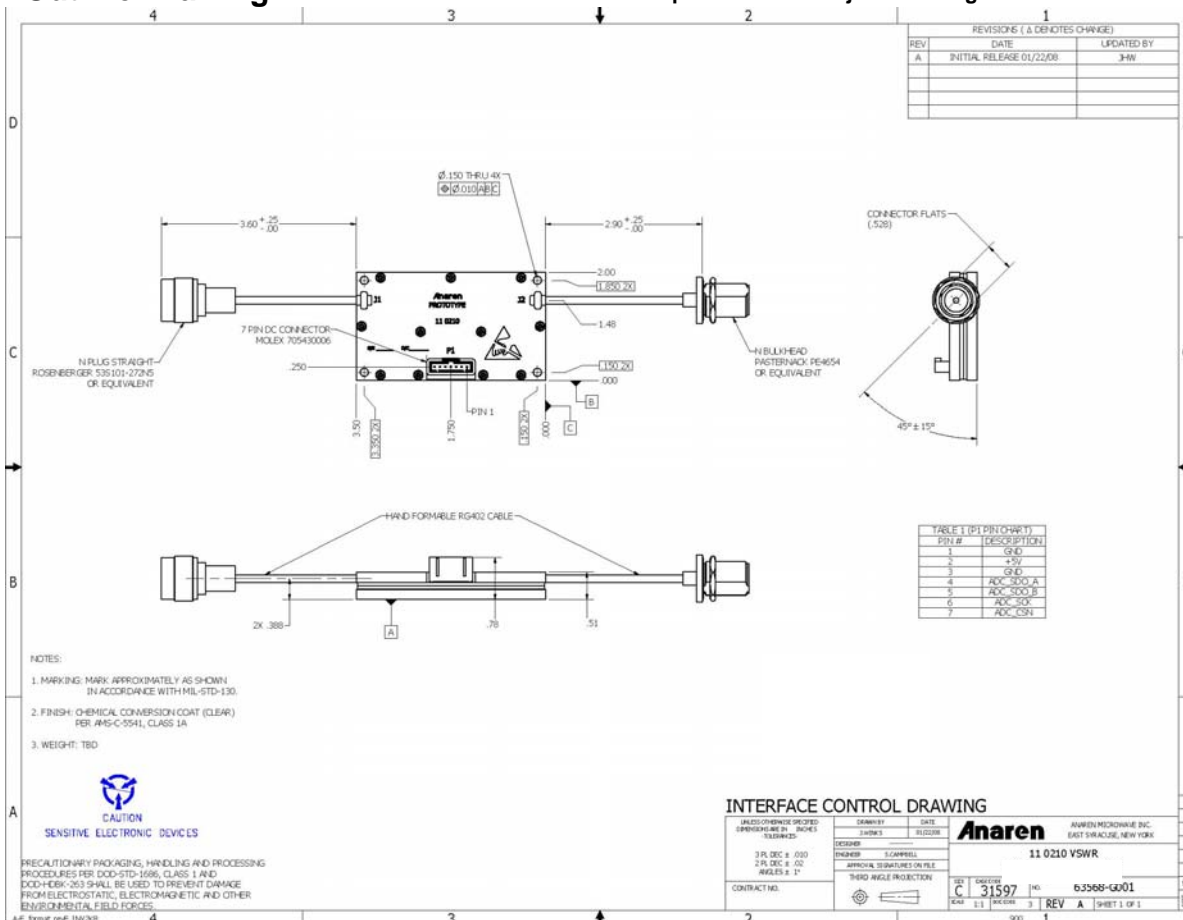


Photo shown may not be current; contact Anaren for the latest available image.

Outline Drawing

NOTES: Electrical and Mechanical Specifications subject to change without notice



Specifications

| Parameter | Specification | Comments |
|--------------------------|--|---|
| Frequency | 800 – 2500 MHz | |
| Return Loss | 20dB min | |
| Insertion Loss | 0.4dB max | Nominal 0.28dB (WC) at room temp. |
| Operational Power | +15 to +51.5 dBm | Forward power detection |
| | +30 to +51.5 dBm | VSWR Detection |
| Power Detection accuracy | ±1.5dB | Over all frequencies, temps and units |
| Coupler Directivity | 18dB min. | |
| Timing | 500nS | RF present at J1 to read delay |
| Power Handling | 140W max | Into infinite VSWR load - +85°C baseplate |
| DC Power Required | +5V @ 75mA max. | |
| Logic Interface | 12 bit serial word for forward and reverse power | User must supply clock and chip select |
| Operational Temperature | -40°C to +85°C | |

* All parameters based on 50 Ohm source and load impedances