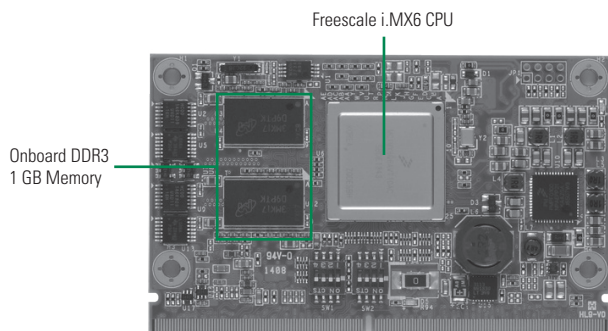


SCM120

SCM120 with Quad/DualLite 800 MHz (Industrial) SoC, 1 GB Memory, 4 GB eMMC, Gigabit Ethernet, Audio, CAN



System

| | |
|-----------------------|--|
| Processor | Freescale i.MX6 Series SoC with Quad/DualLite ARM Cortex™-A9 CPU 800 MHz |
| System Memory | On-board DDR3 1GB |
| OS | Linux kernel 3.0.35, Android 4.3 |
| Storage | eMMC flash 4 GB, SDIO interface, SATA interface (Only Quad Support) |
| RTC | Battery on the Baseboard is required |
| Power Requirement | +3V~+5.25V |
| Size | 82 x 50 mm |
| Board Thickness | 1.2 mm ± 0.1mm |
| Operating Temperature | -40°C ~ +85°C (Industrial) |
| Operation Humidity | 10% ~ 95%, non-condensing |

I/O

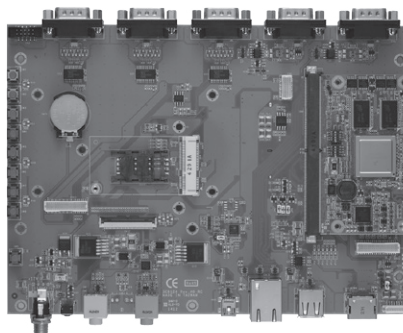
| | |
|------------------|---|
| Graphics | 1 x 24-bit TTL signal 1 x Dual channel 24-bit LVDS 1 x HDMI 1080P |
| Ethernet | 1 x 10/100/1000 Mbps Ethernet |
| Audio | Mic-in/Headphone |
| COM | 3 x COM with TX/RX/RTS/CTS 1 x Console port |
| USB | 1 x OTG client and 1 USB 2.0 |
| I ² C | 4 x I ² C Interface |
| SPI | 2 |
| CAN | 2 ports |
| GPIO | 8 |
| PCIe | 1 x PCIe |
| Camera | 1 x MIPI v1.0, 2 x Lane 1 x PCAM 8-bit |

Features

- Ultra low power consumption Cortex™-A9
- High flexibility SMARC v1.0 compliant design
- 2 CAN 2.0B
- 24-bit TTL signal
- LVDS/HDMI 1080P
- 10/100/1000 Mbps Ethernet
- Linux3.0.35/Android4.3
- Audio

Ordering Information

| Standard | |
|---------------------------|---|
| SCM120-DualLite-I | SCM120 with Freescale iMX6 DualLite 800 MHz (Industrial) SoC, 1 GB Memory, 4 GB eMMC, 10/100/1000 Mbps Ethernet, audio, and CAN |
| SCM120-Quad-I | SCM120 with Freescale iMX6 Quad 800MHz (Industrial) SoC, 1 GB Memory, 4 GB eMMC, 10/100/1000 Mbps Ethernet, audio, CAN and SATA |
| Optional | |
| SCM120-120-EVK DualLite-I | Evaluation Kit Board |
| SCM120-120-EVK Quad-I | Evaluation Kit Board |
| P/N: 5078S120100E | SCM120 Heatspread (-40 °C ~70 °C) |
| P/N: 5078Q120200E | Heatsink (-40 °C ~75 °C) |



▲ SCM120-120-EVK