



4 Section Bandpass Filter With SMA Female Connectors Operating From 1.217 GHz To 1.237 GHz With a 20 MHz Passband

TECHNICAL DATA SHEET

PE8704

4 Section Bandpass Filter With SMA Female Connectors Operating From 1.217 GHz To 1.237 GHz With a 20 MHz Passband

Configuration

Design	Comblin Filter
Connector 1	SMA Female
Connector 2	SMA Female
Passband Frequency Range, GHz	1.217 to 1.237

Electrical Specifications

Passband Minimum Frequency, GHz	1.217
Passband Maximum Frequency, GHz	1.237
Impedance, Ohms	50
Maximum Insertion Loss, dB	1.3
Passband Maximum VSWR	1.5:1
Maximum Input Power, Watts	5
Rejection at 1.127 GHz	50 dB
Rejection at 1.327 GHz	50 dB

Mechanical Specifications

Connector 1	
Type	SMA Female
Connector 2	
Type	SMA Female

Compliance Certifications (visit www.Pasternack.com for current document)

RoHS Compliant	Yes
----------------	-----

Plotted and Other Data

Notes: Values at 25 °C, sea level

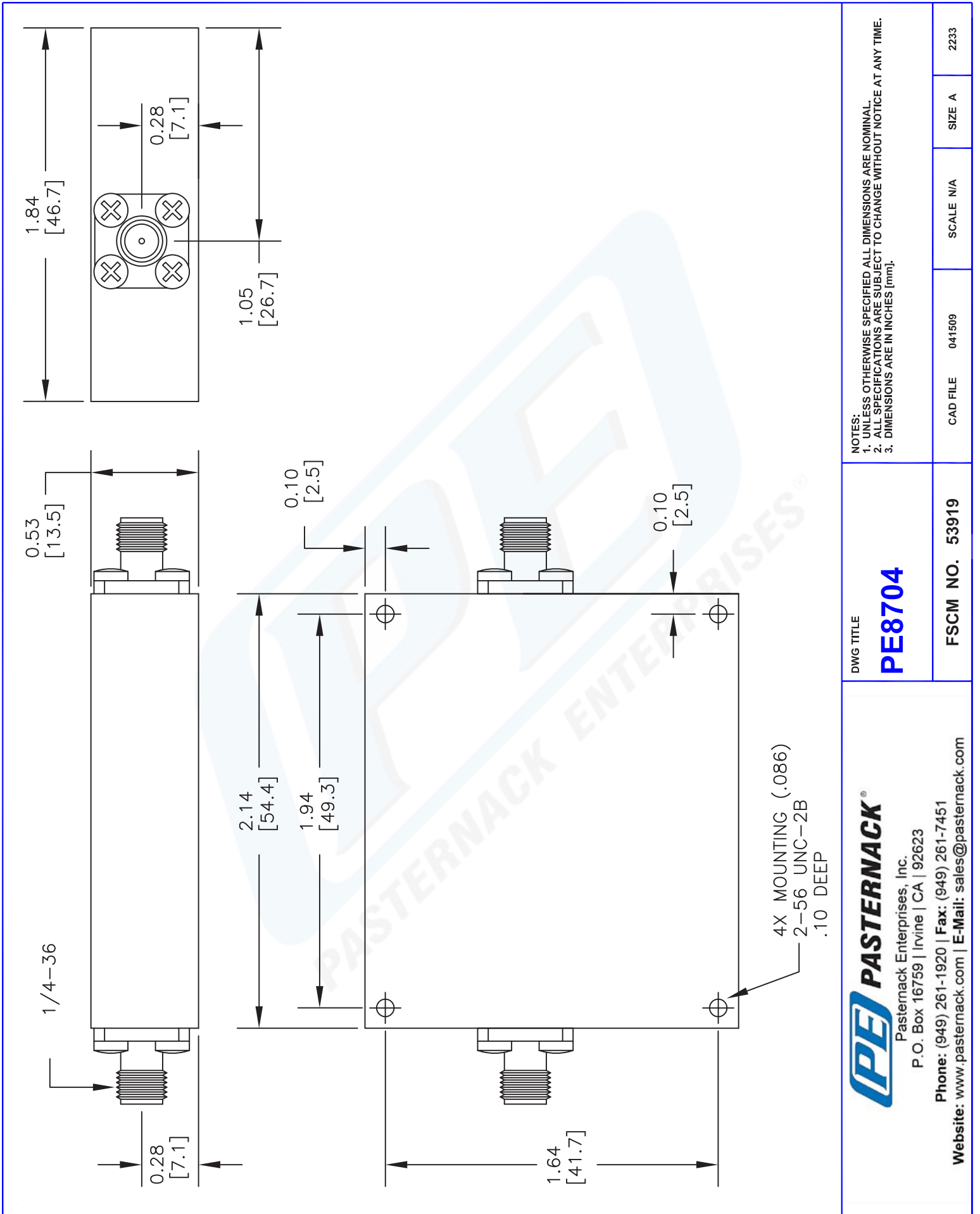
URL: <http://www.pasternack.com/4-section-band-pass-filter-1.217-ghz-1.237-ghz-passband-20-mhz-pe8704-p.aspx>

4 Section Bandpass Filter With SMA Female Connectors Operating From 1.217 GHz To 1.237 GHz With a 20 MHz Passband from Pasternack Enterprises has same day shipment for domestic and International orders. Our RF, microwave and fiber optic products maintain a 99% availability and are part of the broadest selection in the industry.

The information contained in this document is accurate to the best of our knowledge and representative of the part described herein. It may be necessary to make modifications to the part and/or the documentation of the part, in order to implement improvements. Pasternack reserves the right to make such changes as required. Unless otherwise stated, all specifications are nominal.

PE8704 CAD Drawing

4 Section Bandpass Filter With SMA Female Connectors Operating
From 1.217 GHz To 1.237 GHz With a 20 MHz Passband



DWG TITLE

PE8704

FSCM NO. 53919

NOTES:
1. UNLESS OTHERWISE SPECIFIED ALL DIMENSIONS ARE NOMINAL.
2. ALL SPECIFICATIONS ARE SUBJECT TO CHANGE WITHOUT NOTICE AT ANY TIME.
3. DIMENSIONS ARE IN INCHES [mm].

CAD FILE 041509

SCALE N/A

SIZE A

2233

PE PASTERNAK
Pasternack Enterprises, Inc.
P.O. Box 16759 | Irvine | CA | 92623
Phone: (949) 261-1920 | Fax: (949) 261-7451
Website: www.pasternack.com | E-Mail: sales@pasternack.com