

**PLEASE CHECK WWW.MOLEX.COM FOR LATEST PART INFORMATION**

**Part Number:** [09-93-0900](#)  
**Status:** **Active**  
**Overview:** [KK® Interconnect System - Molex](#)  
**Description:** KK® 3.96mm Crimp Terminal Housing, Friction Ramp, 9 Circuits, Glow Wire Compatible

**Documents:**

[3D Model](#) [Packaging Specification PK-3069-001 \(PDF\)](#)  
[Drawing \(PDF\)](#) [RoHS Certificate of Compliance \(PDF\)](#)  
[Product Specification PS-99020-0087 \(PDF\)](#)

**Agency Certification**

UL E29179

**General**

Product Family Crimp Housings  
 Series [3069](#)  
 Application Power, Wire-to-Board  
 Comments This Molex product is manufactured from material that has the following ratings, tested by independent agencies :. a) A Glow Wire Ignition Temperature (GWIT) of at least 775 deg C per IEC 60695-2-13.. b) A Glow Wire Flammability Index (GWFI) above 850 deg C per IEC 60695-2-12.and hence complies with the requirements set out in the International Standard IEC 60335-1 5th edition - household and similar electrical appliances - safety; section 30 Resistance to heat and fire.<P><P>The customers using this product must determine its suitability for use in their particular application through testing or other acceptable means as described in end-product glow-wire flammability test standard IEC 60695-2-11 and any applicable product end-use standard(s).<P>If it is determined during the customer's evaluation of suitability, that higher performance is required, please contact Molex for possible product options.  
[KK® Interconnect System - Molex](#)  
 Overview [KK® 396](#)  
 Product Name  
 UPC 883906174248

**Physical**

Circuits (maximum) 9  
 Circuits Detail 9  
 Color - Resin Black  
 Flammability 94V-2  
 Gender Female  
 Glow-Wire Compliant Yes  
 Lock to Mating Part Yes  
 Material - Resin Nylon  
 Net Weight 2.900/g  
 Number of Rows 1  
 Packaging Type Bag  
 Panel Mount No  
 Pitch - Mating Interface 3.96mm  
 Temperature Range - Operating See Product Specification

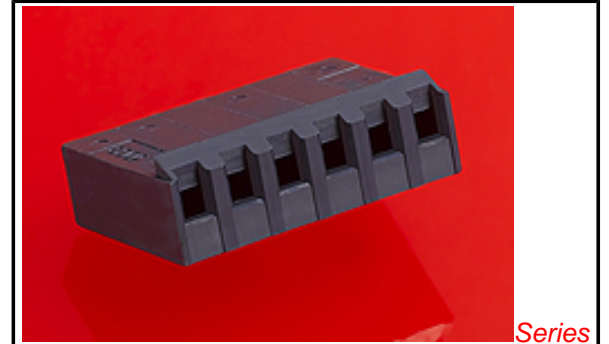


image - Reference only

Series

**EU RoHS**

**ELV and RoHS Compliant**  
**REACH SVHC Contains SVHC: No**  
**Low-Halogen Status Not Low-Halogen**

**China RoHS**



**Need more information on product environmental compliance?**

Email [productcompliance@molex.com](mailto:productcompliance@molex.com)  
 For a multiple part number RoHS Certificate of Compliance, [click here](#)

Please visit the [Contact Us](#) section for any non-product compliance questions.

**Search Parts in this Series**

[3069](#)Series

**Mates With**

[2220](#) , [3190](#) , [3192](#) , [3243](#) , [3246](#) , [A4042](#) , [41661](#) , [41662](#) , [41671](#) , [41672](#) , [41681](#) , [41682](#) , [41701](#) , [41711](#) , [41721](#) , [41741](#) , [41761](#) , [41771](#) , [41772](#) , [41791](#) , [41792](#) , [42441](#) , [42461](#) , [42471](#) , [42491](#)

**Use With**

[2478](#) Crimp Terminals for 18-24 AWG, [2578](#) Crimp Terminals for 22-26 AWG

**Material Info**

Old Part Number

3069-G09

**Reference - Drawing Numbers**

Packaging Specification

PK-3069-001

Product Specification

PS-99020-0087

Sales Drawing

SD-3069-GN\*\*\*

This document was generated on 10/10/2014

**PLEASE CHECK [WWW.MOLEX.COM](http://WWW.MOLEX.COM) FOR LATEST PART INFORMATION**