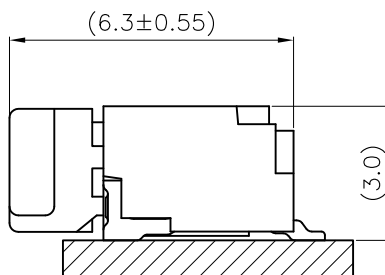
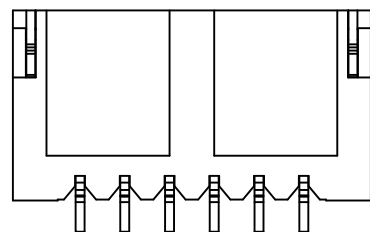
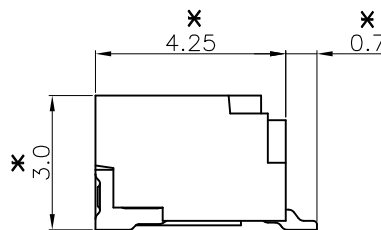
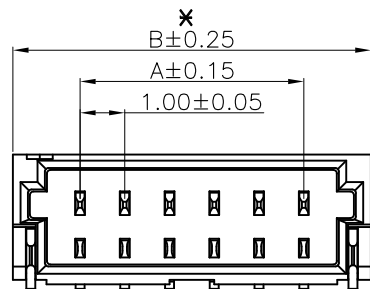
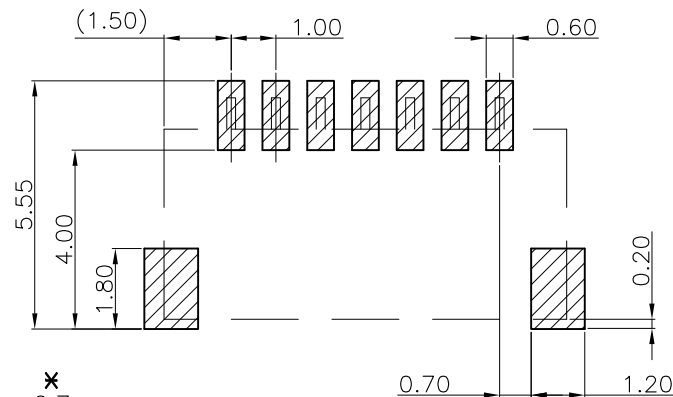


CIRCUIT 1 MARK



Mating Condition (REF.)



TOLERANCE:  $\pm 0.05$   
RECOMMENDED P.C.B. Layout  
TOP VIEW

NO. OF WAYS	PART NO.	Dim.(mm)	
		A	B
2	M40-4010246R	1.00	4.00
3	M40-4010346R	2.00	5.00
4	M40-4010446R	3.00	6.00
5	M40-4010546R	4.00	7.00
6	M40-4010646R	5.00	8.00
7	M40-4010746R	6.00	9.00
8	M40-4010846R	7.00	10.00
9	M40-4010946R	8.00	11.00
10	M40-4011046R	9.00	12.00
11	M40-4011146R	10.00	13.00
12	M40-4011246R	11.00	14.00
13	M40-4011346R	12.00	15.00
14	M40-4011446R	13.00	16.00
15	M40-4011546R	14.00	17.00
16	M40-4011646R	15.00	18.00
17	M40-4011746R	16.00	19.00
18	M40-4011846R	17.00	20.00
19	M40-4011946R	18.00	21.00
20	M40-4012046R	19.00	22.00

## SPECIFICATIONS:

## MATERIAL:

INSULATION: LCP, UL94V-0 (HALOGEN FREE); COLOR: CREAM.

CONTACT: COPPER ALLOY, t=0.20mm.

## FINISH:

MATTE-TIN PLATED OVER NICKEL

## ELECTRICAL:

CURRENT RATING: 1A AC/DC

WORKING VOLTAGE: 50V AC/DC

WITHSTANDING VOLTAGE: 500V AC/MINUTE

CONTACT RESISTANCE: 30 mΩ MAX.

INSULATION RESISTANCE: 100 MΩ MIN.

## ENVIRONMENTAL:

TEMPERATURE RANGE: -25°C TO +85°C

Leo	6	08.02.18	A533
Allan	5	25.09.08	A164
Allan	4	27.06.08	A136
Allan	3	19.06.08	A130
Allan	2	08.03.07	A022
Allan	1	01.08.06	--

NAME	ISS.	DATE	C/NOTE
------	------	------	--------

APPROVED: B.Lim

CHECKED: D.P

DRAWN: Leo

CUSTOMER REF.:

ASSEMBLY DRG:

#NOTE: REMOVE R FOR LOOSE BAG PACKING

## ORDER CODE

M40-401 XX 46R

NO. OF WAYS \_\_\_\_\_ WITH R: REEL PACKING

WITHOUT R: LOOSE BAG PACKING  
(10 PCS PER STRIP, 10 STRIPS PER BAG)NOTE: ALL DIMENSIONS AND NOTES MARKED \* ARE CRITICAL AND  
MUST BE CHECKED IN ACCORDANCE WITH QUALITY DOC. QI-02A

# HARWIN

HARWIN USA  
TEL: 603 893 5376  
FAX: 603 893 5396  
mis@harwin.com

HARWIN Europe (UK)  
TEL: 023 9231 4545  
FAX: 023 9231 4590  
mis@harwin.co.uk

HARWIN Asia  
TEL: +65 6 779 4909  
FAX: +65 6 779 3868  
mis@harwin.com.sg

THIS DRAWING AND ANY  
INFORMATION OR DESCRIPTIVE  
MATTER SET OUT HEREON ARE  
CONFIDENTIAL AND COPYRIGHT  
PROPERTY OF THE HARWIN  
GROUP AND MUST NOT BE  
DISCLOSED, LOANED, COPIED  
OR USED FOR MANUFACTURING,  
TENDERING OR FOR ANY  
OTHER PURPOSE WITHOUT  
THEIR WRITTEN PERMISSION.

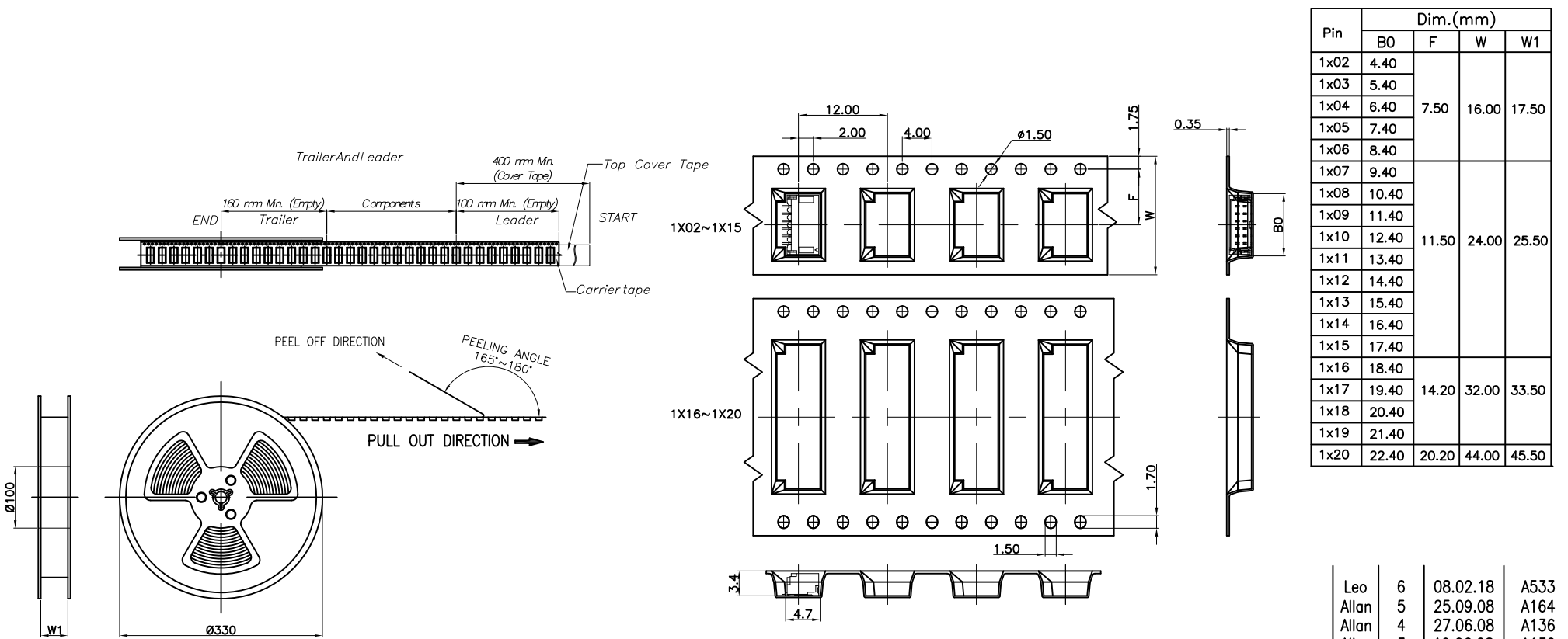
TOLERANCES  
X. =  $\pm 1$ mm  
X.X =  $\pm 0.25$ mm  
X.XX =  $\pm 0.15$ mm  
X.XXX =  $\pm 0.08$ mm  
ANGLES =  $\pm 5^\circ$   
UNLESS STATED

MATERIAL: SEE NOTES  
FINISH: SEE NOTES  
S/AREA: mm<sup>2</sup>

TITLE:  
WAFER 1.00mm SIDE ENTRY SMT  
TYPE

DRAWING NUMBER:  
M40-401 XX 46 X

SHT  
1  
OF  
2



Pin	Dim.(mm)			
	B0	F	W	W1
1x02	4.40	7.50	16.00	17.50
1x03	5.40			
1x04	6.40			
1x05	7.40			
1x06	8.40			
1x07	9.40			
1x08	10.40			
1x09	11.40	11.50	24.00	25.50
1x10	12.40			
1x11	13.40			
1x12	14.40			
1x13	15.40			
1x14	16.40			
1x15	17.40			
1x16	18.40	14.20	32.00	33.50
1x17	19.40			
1x18	20.40			
1x19	21.40			
1x20	22.40			

- 10 SPROCKET HOLE PITCH CUMULATIVE TOLERANCE  $\pm 0.20$
- CARRIER CAMBER IS WITHIN 1 mm IN 250 mm
- THE TOTAL TEARING CONTROL RANGE OF TOP COVER TAPE IS 10~130g, REFERENCE SPEC: EIA-481-D
- PEELING SPEED: 300mm/MINUTES, REFERENCE SPEC: EIA-481-D
- MATERIAL: TRANSPARENT CONDUCTIVE POLYSTYRENE ALLOY.(UP-5000)
- ALL DIMENSIONS MEET EIA-481-D REQUIREMENTS
- THICKNESS:  $0.35 \pm 0.05$ mm
- COMPONENT LOAD PER 13" REEL: 1500 PCS

NOTE: ALL DIMENSIONS AND NOTES MARKED \* ARE CRITICAL AND MUST BE CHECKED IN ACCORDANCE WITH QUALITY DOC. QI-02A

Leo	6	08.02.18	A533
Allan	5	25.09.08	A164
Allan	4	27.06.08	A136
Allan	3	19.06.08	A130
Allan	2	08.03.07	A022
Allan	1	01.08.06	--

NAME	ISS.	DATE	C/NOTE
------	------	------	--------

APPROVED: B.Lim

CHECKED: D.P

DRAWN: Leo

CUSTOMER REF.:

ASSEMBLY DRG:

# HARWIN

HARWIN USA  
TEL: 603 893 5376  
FAX: 603 893 5396  
mis@harwin.com

HARWIN Europe (UK)  
TEL: 023 9231 4545  
FAX: 023 9231 4590  
mis@harwin.co.uk

HARWIN Asia  
TEL: +65 6 779 4909  
FAX: +65 6 779 3868  
mis@harwin.com.sg

THIS DRAWING AND ANY INFORMATION OR DESCRIPTIVE MATTER SET OUT HEREON ARE CONFIDENTIAL AND COPYRIGHT PROPERTY OF THE HARWIN GROUP AND MUST NOT BE DISCLOSED, LOANED, COPIED OR USED FOR MANUFACTURING, TENDERING OR FOR ANY OTHER PURPOSE WITHOUT THEIR WRITTEN PERMISSION.

TOLERANCES  
X. =  $\pm 1$ mm  
X.X =  $\pm 0.25$ mm  
X.XX =  $\pm 0.15$ mm  
X.XXX =  $\pm 0.08$ mm  
ANGLES =  $\pm 5^\circ$   
UNLESS STATED

MATERIAL:  
SEE NOTES

FINISH:  
SEE NOTES

S/AREA: mm<sup>2</sup>

TITLE:  
WAFER 1.00mm SIDE ENTRY SMT TYPE

DRAWING NUMBER:  
M40-401 XX 46 X

SHT  
2  
OF  
2