

Directional Couplers H" Style



Applications

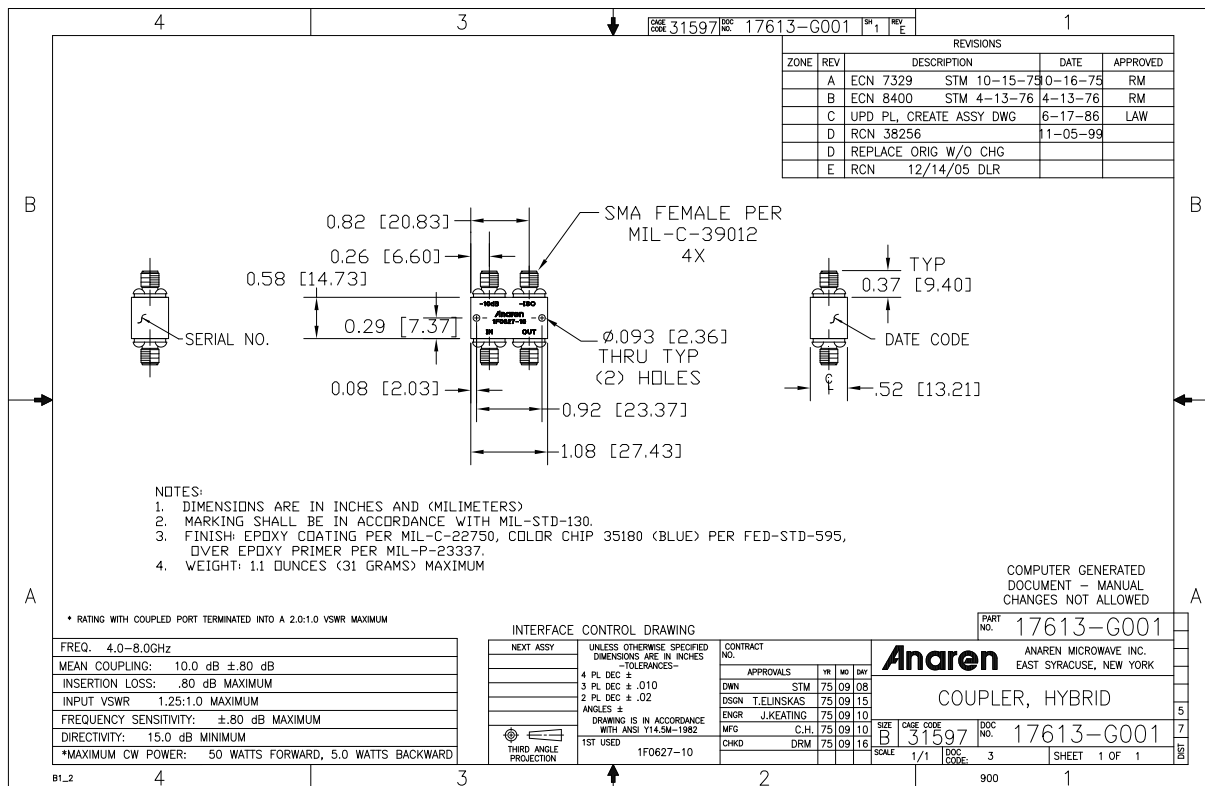
- Subassemblies
- Lab Systems
- Leveling Loops
- Power Monitoring
- Test and Calibration

Features

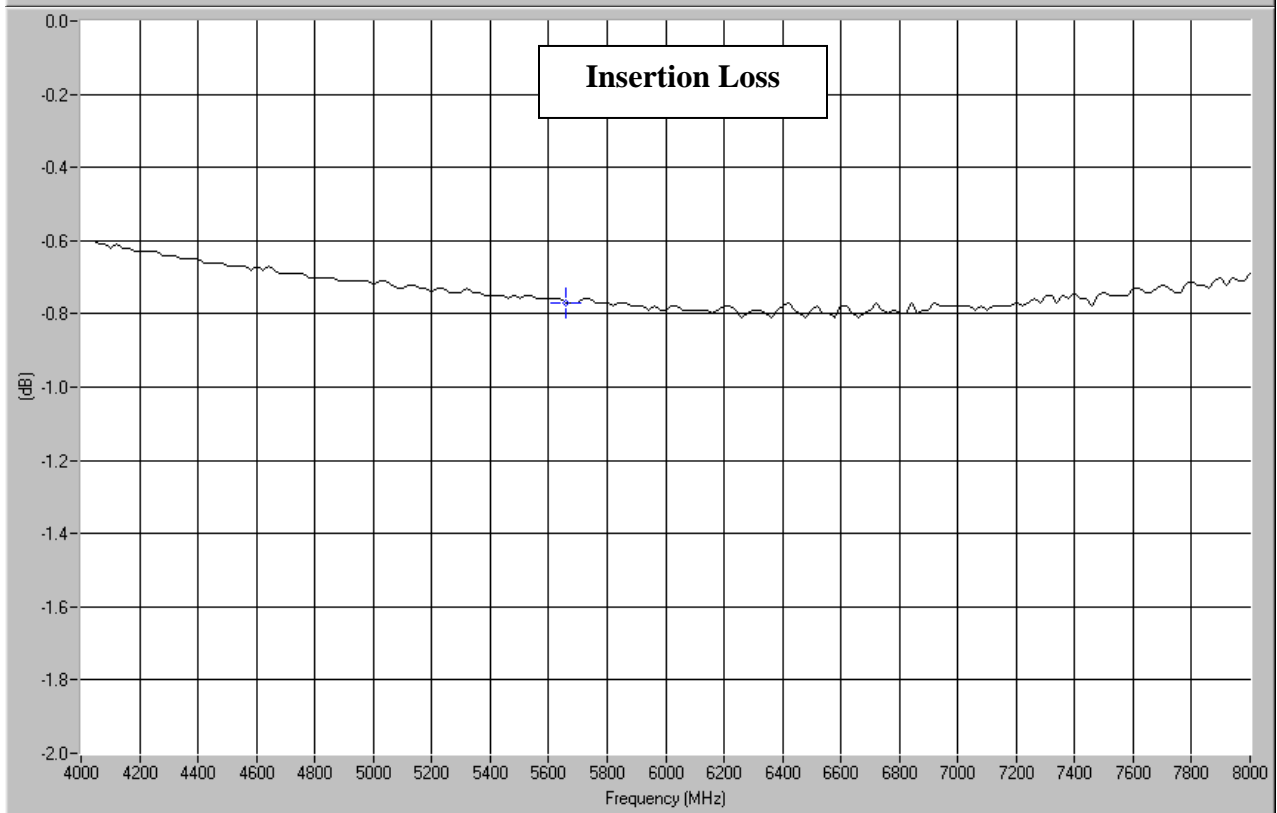
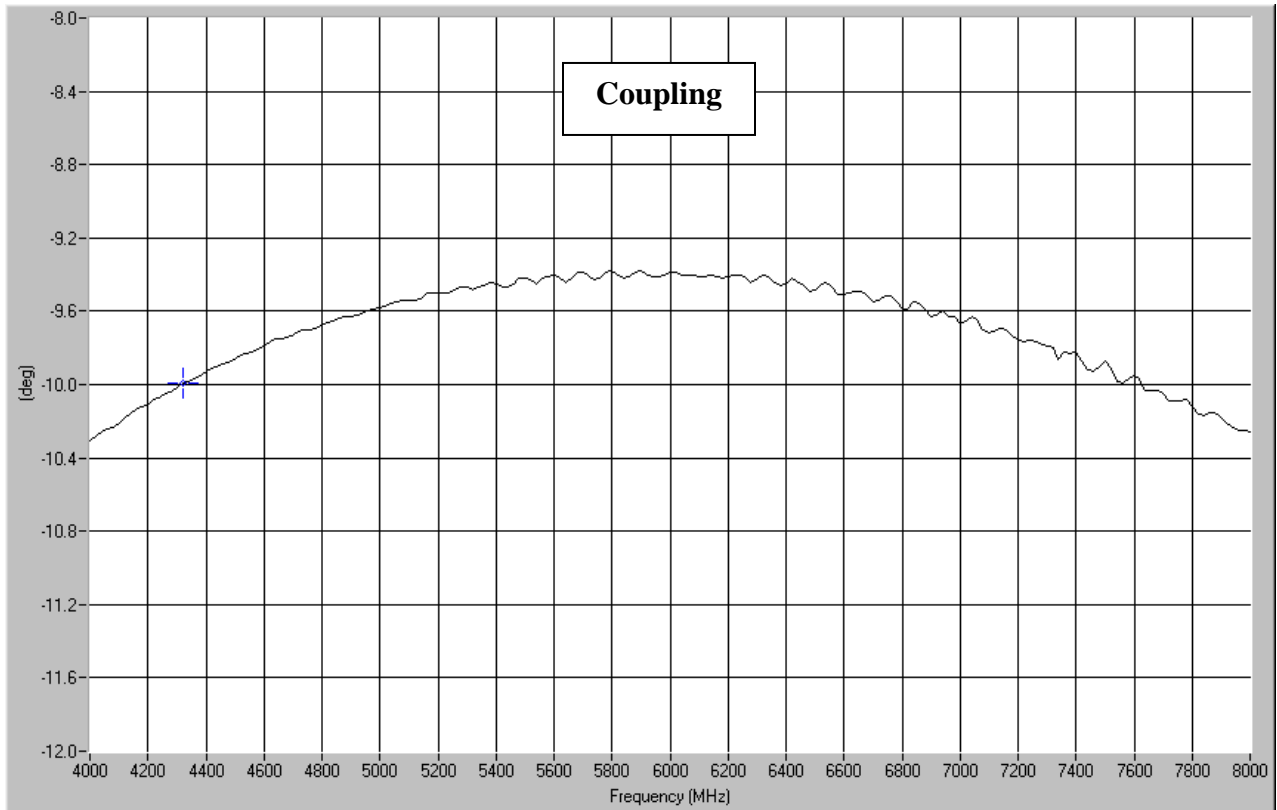
- Military Grade
- 4.0 – 8.0 GHz
- "H" Style Configuration
- Connectors Per MIL-C-39012
- Rugged Aluminum Housing
- High Directivity
- Meets MIL-E-5400 Class 3 Requirements

NOTES: The power rating applies when optional termination is supplied by Anaren and coupled port VSWR is 2.0:1 or less. Higher power can be handled with a lower VSWR termination
Electrical and Mechanical Specifications subject to change without notice

Outline Drawing

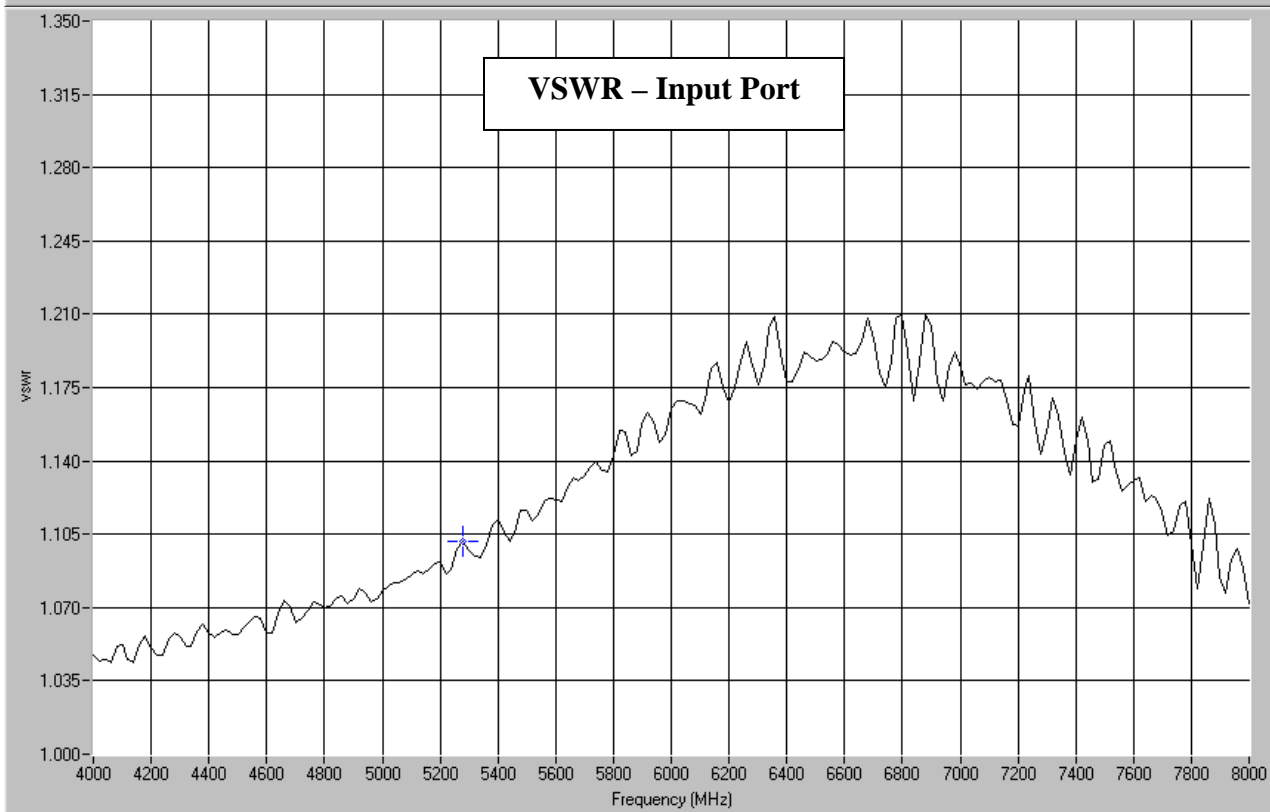
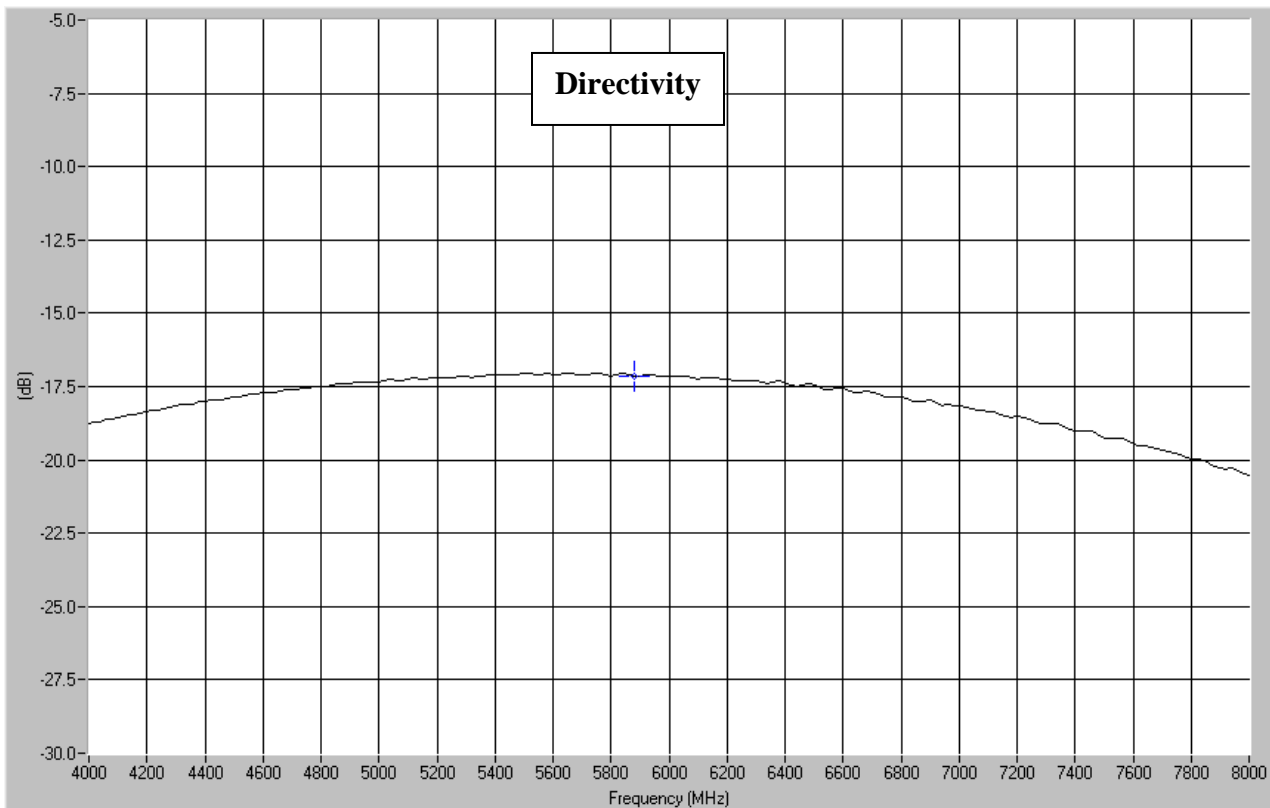


Typical Test Data Plots



USA/Canada: (315) 432-8909
 Toll Free: (800) 411-6596
 Europe: +44 2392-232392

Typical Test Data Plots



Mouser Electronics

Authorized Distributor

Click to View Pricing, Inventory, Delivery & Lifecycle Information:

[Anaren:](#)

[1F0627-10](#)