



# Solid State Devices, Inc.

14701 Firestone Blvd \* La Mirada, CA 90638  
Phone: (562) 404-4474 \* Fax: (562) 404-1773  
ssdi@ssdi-power.com \* www.ssdi-power.com

# JAN, JANTX, JANTXV, JANS 1N6512 – 1N6519 Series

## Designer's Data Sheet

### Part Number / Ordering Information<sup>1/</sup>

**JANS 1N651**

**Package**  
= Axial  
US = Surface Mount  
Square Tab

**Voltage**  
2 = 1,500 V      6 = 4,000 V  
3 = 2,000 V      7 = 5,000 V  
4 = 2,500 V      8 = 7,500 V  
5 = 3,000 V      9 = 10,000 V

### Screening<sup>2/</sup>

JAN  
JANTX  
JANTXV  
JANS

**0.5 – 1.5 AMP  
1,500 V – 10,000 V  
ULTRA FAST RECOVERY  
HIGH VOLTAGE RECTIFIER**

### FEATURES:

- Fast recovery: 70 nsec maximum
- PIV to 10 KV
- Hermetically sealed axial and surface mount package
- Void-free ceramic frit glass construction
- High temperature Category I eutectic metallurgical bond
- Excellent thermal shock performance
- For use in high voltage systems
- 175°C maximum operating temperature
- JAN, JANTX, JANTXV, and JANS screening available in accordance with MIL-PRF-19500/575

### MAXIMUM RATINGS<sup>3/</sup>

Part Number	V <sub>RWM</sub>	I <sub>FSM</sub>	I <sub>O</sub>		t <sub>RR</sub>	R <sub>θJL1</sub>	R <sub>θJL2</sub>	R <sub>θJEC</sub>
Conditions		t <sub>p</sub> = 8.3 ms	4/	5/	25°C	L = .25" (6.35 mm) (Air)	L = .25" (6.35 mm) (Oil Bath) <sup>6/</sup>	7/
Units	V <sub>DC</sub>	A (pk)	A <sub>DC</sub>	A <sub>DC</sub>	ns	°C/W	°C/W	°C/W
1N6512, US	1,500	100	1.5	1.0	70	16	12	4
1N6513, US	2,000	100	1.5	1.0	70	16	12	4
1N6514, US	2,500	60	1.0	0.65	70	16	12	4
1N6515, US	3,000	60	1.0	0.65	70	16	12	4
1N6516, US	4,000	40	0.75	0.5	70	16	12	5
1N6517, US	5,000	40	0.75	0.5	70	16	12	5
1N6518, US	7,500	25	0.5	0.35	70	16	12	5
1N6519, US	10,000	25	0.5	0.35	70	16	12	5

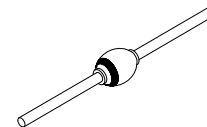
### MAXIMUM RATINGS<sup>3/</sup>

	Symbol	Value	Unit
Storage Temperature	T <sub>STG</sub>	-65 to +200	°C
Operating Temperature	T <sub>J</sub>	-65 to +175	°C

### Notes:

- 1/ For ordering information, price, and availability – Contact factory.
- 2/ Screened per MIL-PRF-19500/575.
- 3/ Unless otherwise specified, T<sub>A</sub> = 25°C.
- 4/ Derate linearly for air (+55°C ≤ T<sub>A</sub> ≤ +100°C. I<sub>O</sub> at T<sub>A</sub> = +55°C to I<sub>O</sub> at T<sub>A</sub> = +100°C), for oil bath (+80°C ≤ T<sub>L</sub> ≤ +100°C. I<sub>O</sub> at T<sub>L</sub> = +80°C to I<sub>O</sub> at T<sub>A</sub> = +100°C), and for end cap (+100°C ≤ T<sub>A</sub> ≤ +125°C. I<sub>O</sub> at T<sub>EC</sub> = +100°C to I<sub>O</sub> at T<sub>EC</sub> = +125°C).
- 5/ Derate linearly for air (+100°C ≤ T<sub>A</sub> ≤ +175°C. I<sub>O</sub> at T<sub>A</sub> = +100°C to I<sub>O</sub> = 0A at T<sub>A</sub> = +175°C), for oil bath (+100°C ≤ T<sub>L</sub> ≤ +175°C. I<sub>O</sub> at T<sub>L</sub> = +100°C to I<sub>O</sub> = 0A at T<sub>A</sub> = +175°C), and for end cap (+125°C ≤ T<sub>A</sub> ≤ +175°C. I<sub>O</sub> at T<sub>EC</sub> = +125°C to I<sub>O</sub> = 0A at T<sub>A</sub> = +175°C).
- 6/ Oil or fluorocarbon fluid with leads heat sunk at specified L.
- 7/ R<sub>θJEC</sub> is junction to end-cap thermal impedance with "US" suffix identification, i.e., 1N6512US.

Axial



Surface Mount Square Tab



**NOTE:** All specifications are subject to change without notification. SCD's for these devices should be reviewed by SSDI prior to release.

**DATA SHEET #: RC0172A**

**DOC**



**Solid State Devices, Inc.**

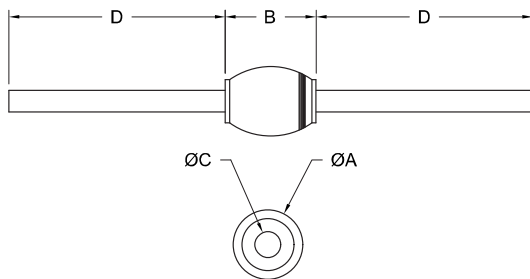
14701 Firestone Blvd \* La Mirada, CA 90638  
 Phone: (562) 404-4474 \* Fax: (562) 404-1773  
 ssdi@ssdi-power.com \* www.ssdi-power.com

# JAN, JANTX, JANTXV, JANS 1N6512 – 1N6519 Series

## ELECTRICAL CHARACTERISTICS

Part Number	$V_{RWM}$	$I_o$	$I_{R1}$	$V_{F1}$	C
Conditions		$T_A = +55^\circ C$	$T_A = 25^\circ C$	@ $I_o$	$V_R = 50V$ $F_o = 1 kHz$
Units	$V_{DC}$	$A_{DC}$	$\mu A_{DC}$	$V_{(pk)}$	pF
1N6512, US	1,500	1.5	1.0	3.5	25
1N6513, US	2,000	1.5	1.0	3.5	25
1N6514, US	2,500	1.0	1.0	6.0	20
1N6515, US	3,000	1.0	1.0	6.0	20
1N6516, US	4,000	0.75	1.0	8.0	16
1N6517, US	5,000	0.75	1.0	8.0	16
1N6518, US	7,500	0.5	1.0	13.0	8
1N6519, US	10,000	0.5	1.0	13.0	8

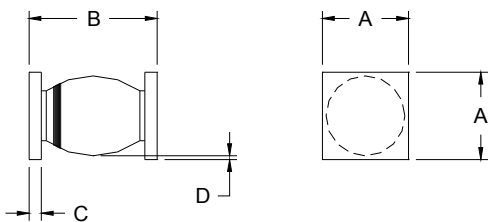
### PACKAGE OUTLINE: Axial



### DIMENSIONS

Part Number	A		B		C		D	
	MIN	MAX	MIN	MAX	MIN	MAX	MIN	MAX
1N6512	.155	.215	.25	.31	.037	.043	1.0	1.3
1N6513	.155	.215	.25	.31	.037	.043	1.0	1.3
1N6514	.155	.215	.27	.33	.037	.043	1.0	1.3
1N6515	.155	.215	.27	.33	.037	.043	1.0	1.3
1N6516	.155	.215	.29	.35	.037	.043	1.0	1.3
1N6517	.155	.215	.29	.35	.037	.043	1.0	1.3
1N6518	.155	.215	.34	.40	.037	.043	1.0	1.3
1N6519	.155	.215	.34	.40	.037	.043	1.0	1.3

### PACKAGE OUTLINE: Surface Mount Square Tab



### DIMENSIONS

Part Number	A		B		C		D	
	MIN	MAX	MIN	MAX	MIN	MAX	MIN	MAX
1N6512US	.170	.180	.225	.245	.026	.036	1.0	1.3
1N6513US	.170	.180	.225	.245	.026	.036	1.0	1.3
1N6514US	.170	.180	.245	.265	.026	.036	1.0	1.3
1N6515US	.170	.180	.245	.265	.026	.036	1.0	1.3
1N6516US	.170	.180	.265	.285	.026	.036	1.0	1.3
1N6517US	.170	.180	.265	.285	.026	.036	1.0	1.3
1N6518US	.170	.180	.325	.345	.026	.036	1.0	1.3
1N6519US	.170	.180	.325	.345	.026	.036	1.0	1.3

**NOTE:** All specifications are subject to change without notification. SCD's for these devices should be reviewed by SSDI prior to release.

**DATA SHEET #: RC0172A**

**DOC**

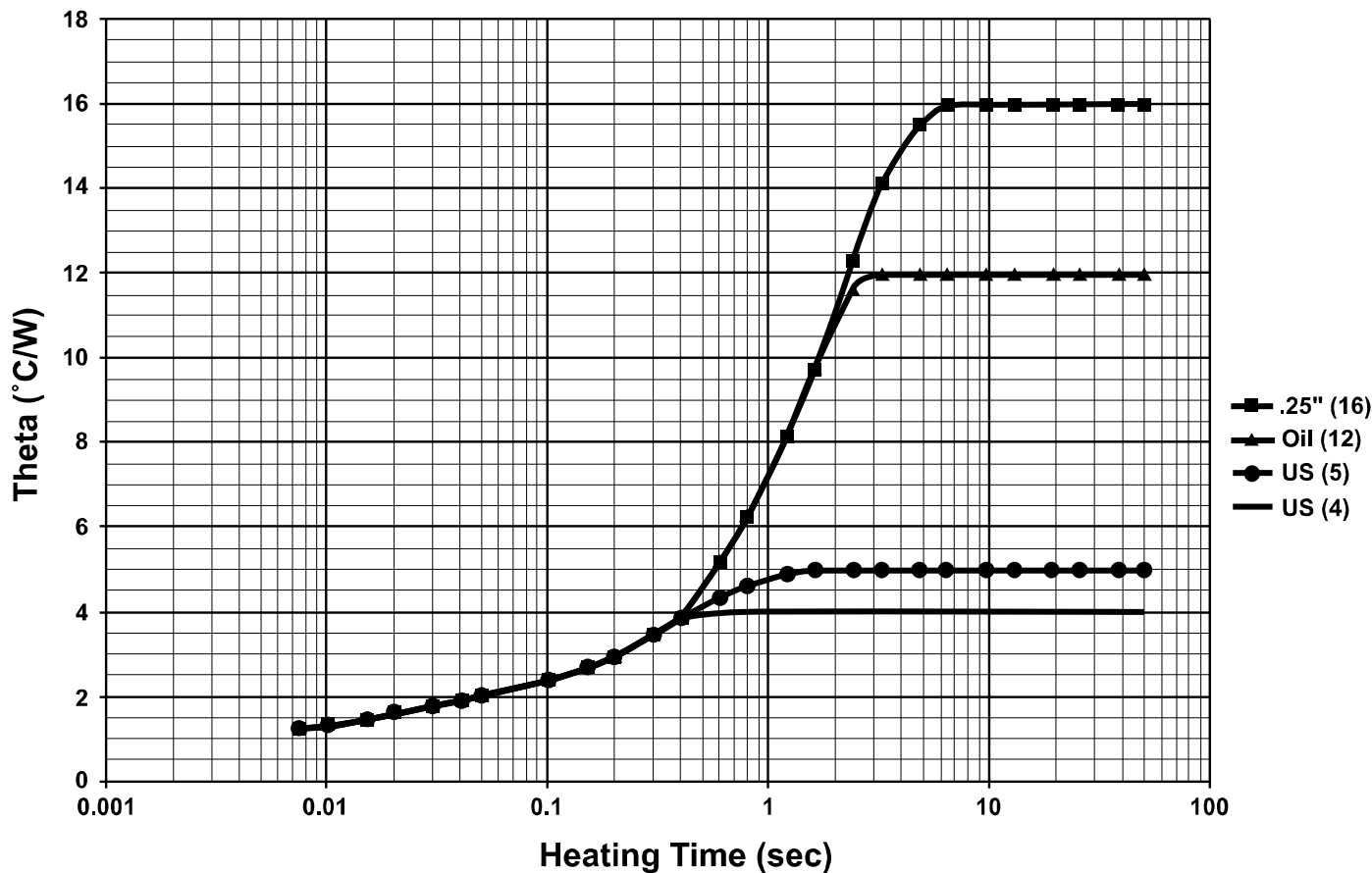


Solid State Devices, Inc.

14701 Firestone Blvd \* La Mirada, CA 90638  
Phone: (562) 404-4474 \* Fax: (562) 404-1773  
ssdi@ssdi-power.com \* www.ssdi-power.com

JAN, JANTX, JANTXV, JANS  
1N6512 – 1N6519  
Series

### Maximum Thermal Impedance



NOTE: All specifications are subject to change without notification.  
SCD's for these devices should be reviewed by SSDI prior to release.

DATA SHEET #: RC0172A

DOC