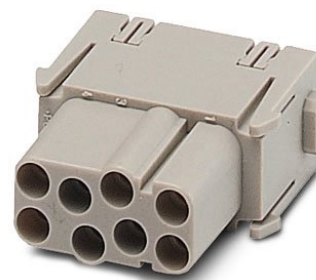



HC-M-08-MOD-BU

Order No.: 1605003

<http://eshop.phoenixcontact.de/phoenix/treeViewClick.do?UID=1605003>

HEAVYCON contact insert module, female, 8-pos., crimp connection

Commercial data

| | |
|--------------------------|------------------------------------------------------------------------------------------------------|
| GTIN (EAN) |  4 017918 893323 |
| sales group | D042 |
| Pack | 2 pcs. |
| Customs tariff | 85369010 |
| Catalog page information | Page 457 (PC-2009) |

Product notesWEEE/RoHS-compliant since:
01/18/2007

<http://www.download.phoenixcontact.com>
Please note that the data given here has been taken from the online catalog. For comprehensive information and data, please refer to the user documentation. The General Terms and Conditions of Use apply to Internet downloads.

Technical data**Electrical characteristics**

| | |
|---------------------------------|------------------------------------------------------------------------------------------------------------------------------------------------------------------------------|
| Note | For housing HC-B6 to B48, for housing HC-ADVANCE-B6 to B24, hinged retaining frame HC-M-MHR... necessary, crimp contacts CK2,5-ED... (crimp contacts not in scope of supply) |
| Rated voltage (III/3) | 400 V |
| Rated current | 16 A |
| Rated surge voltage | 6 kV |
| Ambient temperature (operation) | -40 °C ... 125 °C |

| | |
|-----------------------------------------|------------------------------------------------------------------------------------------------------|
| Number of positions | 8 |
| Mechanical characteristics | |
| Conductor cross-section | 0.5 mm ² ... 4 mm ² |
| Connection cross-section AWG | 20 ... 12 |
| Stripping length of the individual wire | 7.5 mm |
| Insertion/withdrawal cycles | ≥ 500 |
| General characteristics | |
| Number of module slots | 1 |
| Connection method | Crimp connection |
| Inflammability class acc. to UL 94 | V0 |
| Pollution degree | 3 |
| Surge voltage category | III |
| Assembly instructions | Housing height ≥ 52 mm. Plug-in connections may only be operated only when there is no load/voltage. |
| Material data | |
| Contact material | Copper alloy |
| Contact surface material | Ag (alternatively Au) |
| Contact carrier material | PC |

Certificates / Approvals



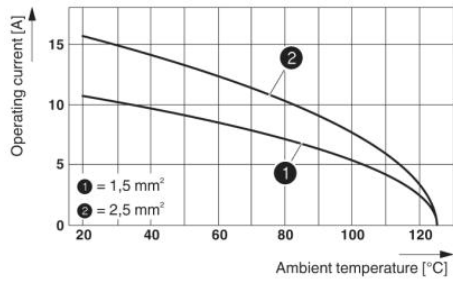
Certification GOST, UL

Accessories

| Item | Designation | Description |
|----------------|-------------|--------------------------------------------------------------------------|
| General | | |
| 1584693 | CK2,5-ED-BB | Dummy socket for contact carrier with turned CK 1,6-ED.. female contacts |

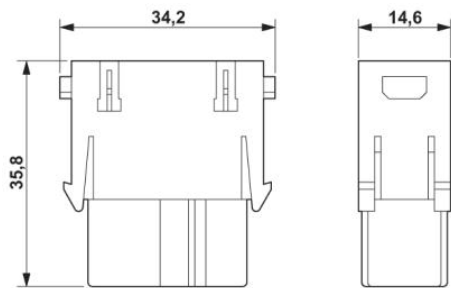
Diagrams/Drawings

Diagram



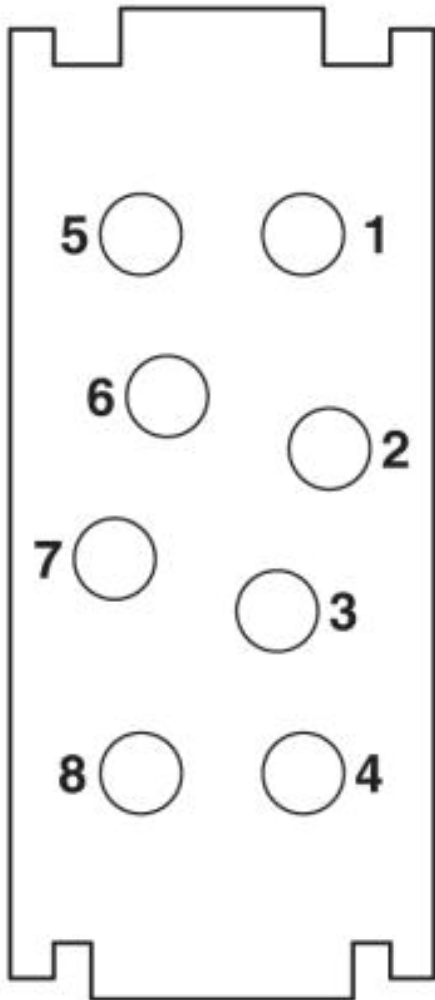
Derating diagram (6 modules in HC-B 24 housing)

Dimensioned drawing



Female insert

Schematic diagram



Address

PHOENIX CONTACT Deutschland GmbH
Flachmarktstr. 8
32825 Blomberg, Germany
Phone +49 5235 3 12000
Fax +49 5235 3 41200
<http://www.phoenixcontact.de>



© 2010 Phoenix Contact
Technical modifications reserved;