

DESCRIPTION

The EV8760D-L-00A is an evaluation board for the MP8760DGL, a high-efficiency, monolithic, synchronous, step-down converter with output discharge function.

The EV board can deliver a continuous 6A load current over an 8V-to-18V operating input range. The EV board can achieve high efficiency over a wide output current load range.

Constant-On-Time (COT) control provides fast transient response and eases loop stabilization.

This EV board can be turned on or shut down via a remote ON/OFF input that is referenced to ground. This input is compatible with popular logic devices.

ELECTRICAL SPECIFICATION

Parameter	Symbol	Value	Units
Input Voltage	V_{IN}	8 – 18	V
Output Voltage	V_{OUT}	1.8	V
Output Current	I_{OUT}	6	A

FEATURES

- Wide 8V-to-18V Operating Input Range
- 6A Output Current
- Low $R_{DS(ON)}$ Internal Power MOSFETs
- Proprietary, Switching-Loss-Reduction Technique
- Adaptive COT for Ultrafast Transient Response
- Programmable Soft Start and Shutdown Time
- Pre-Bias Start-Up
- Programmable Switching Frequency from 200kHz to 1MHz
- Non-Latch OCP, OVP, and Thermal Shutdown
- Output Adjustable from 0.611V to 13V
- Available in a QFN3x4 Package

APPLICATIONS

- Storage
- Set-Top Boxes
- XDSL Modem/DSLAM
- Small-Cell Base Stations
- Personal Video Recorders
- Flat-Panel Televisions and Monitors
- Distributed Power Systems

All MPS parts are lead-free and adhere to the RoHS directive. For MPS green status, please visit MPS website under Products, Quality Assurance page.

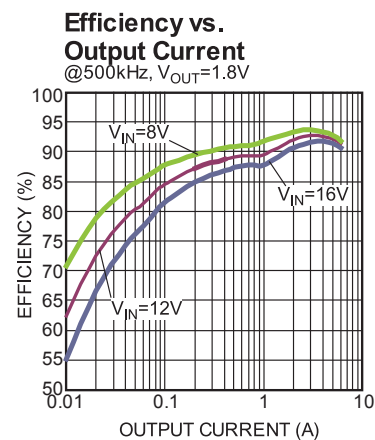
"MPS" and "The Future of Analog IC Technology" are registered trademarks of Monolithic Power Systems, Inc.

EV8760D-L-00A EVALUATION BOARD

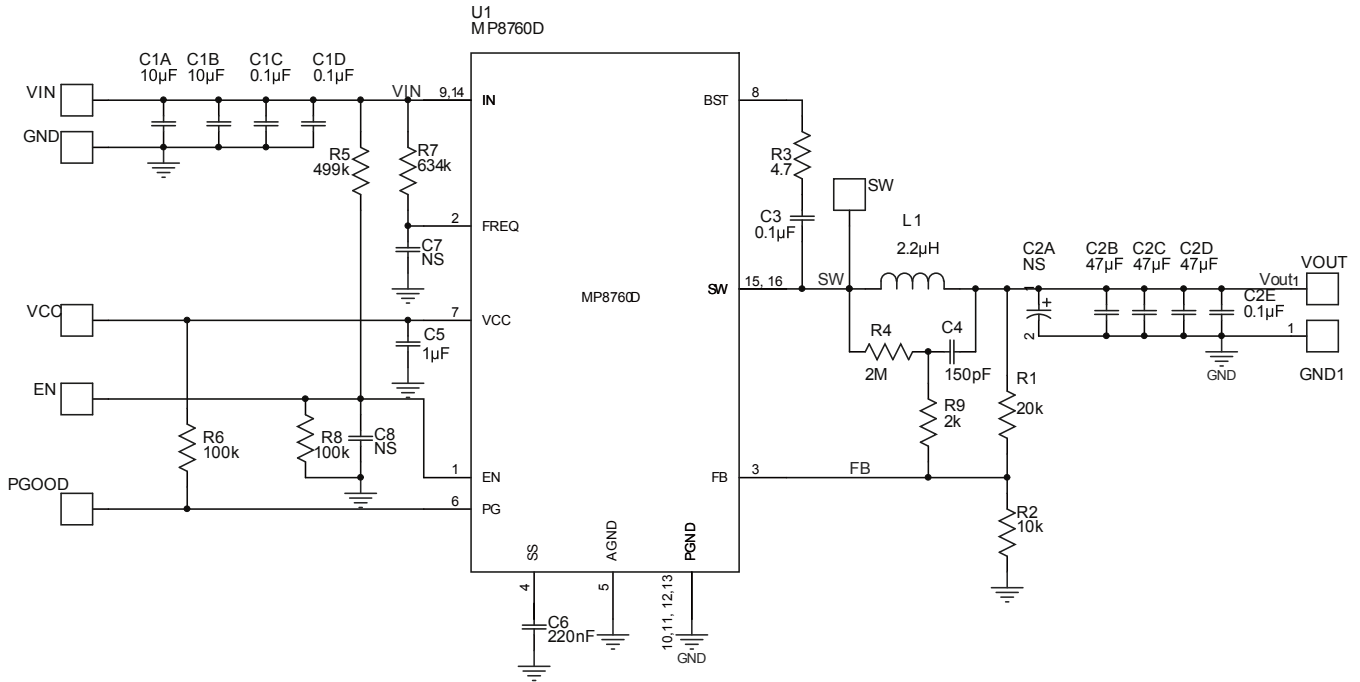


(L x W x H) 85.5mm x 85.5mm x 1.6mm

Board Number	MPS IC Number
EV8760D-L-00A	MP8760DGL



EVALUATION BOARD SCHEMATIC



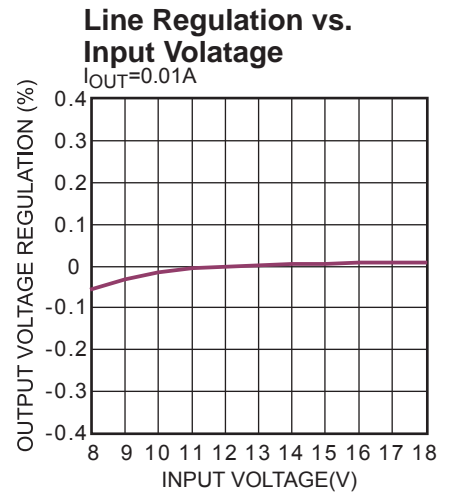
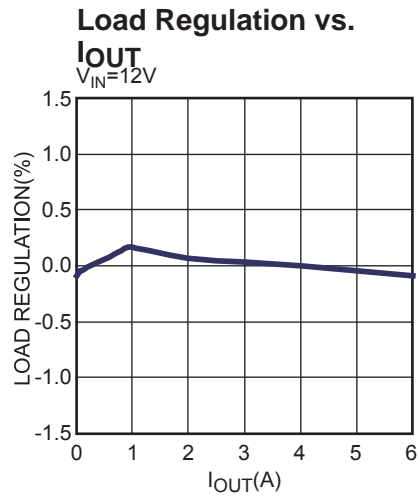
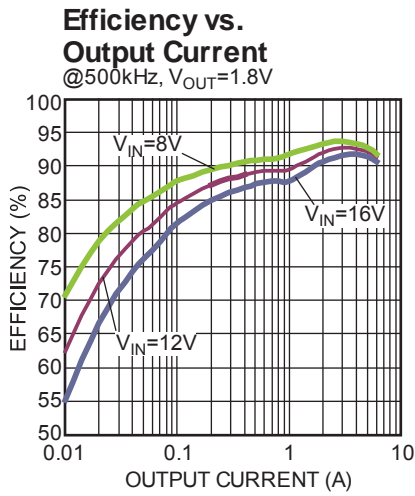
EV8760D-L-00A BILL OF MATERIALS

Qty	Ref	Value	Description	Package	Manufacture	Manufacture_PN
2	C1A, C1B	10 μ F	Ceramic Capacitor; 35V;X7R;1210;	1210	muRata	GRM32ER7YA106KA12L
4	C1C, C1D, C2E, C3	0.1 μ F	Ceramic Capacitor; 50V;X7R;0603	0603	muRata	GRM188R71H104KA93D
0	C2A	NS		POSCAP		
3	C2B, C2C, C2D	47 μ F	Ceramic Capacitor; 6.3V;X5R;1206	1206	TDK	C3216X5R0J476M
1	C4	150pF	Ceramic Capacitor; 50V;COG;0603	0603	muRata	GRM1885C1H151JA01D
1	C5	1 μ F	Capacitor;25V;X7R	0603	muRata	GRM188R71E105KA12
1	C6	220nF	Ceramic Capacitor; 25V;X7R;0603	0603	muRata	GRM188R71E223JA01D
0	C7, C8	NS		0603		
1	L1	2.2 μ H	Inductor;2.2 μ H;3.05m Ω ;23A	SMD	Würth	7443330220
1	R1	20k	Film Resistor;1%	0603	Yageo	RC0603FR-0720KL
1	R2	10k	Film Resistor;1%;	0603	Yageo	RC0603FR-0710KL
1	R3	4.7 Ω	Film Resistor;5%	0603	Yageo	RC0603JR-074R7L
1	R4	2M	Film Resistor;5%;	0603	Yageo	RC0603JR-072ML
1	R5	499k	Film Resistor;1%	0603	Yageo	RC0603FR-07499KL
2	R6, R8	100k	Film Resistor;1%;	0603	Yageo	RC0603FR-07100KL
1	R7	634k	Film Resistor;1%	0603	Yageo	RC0603FR-07634KL
1	R9	2k	Film Resistor;1%;	0603	Yageo	RC0603FR-072KL
1	U1		Step Down Converter	QFN16 3X4	MPS	MP8760DGL

EVB TEST RESULTS

Performance waveforms are tested on the EV8760D-L-00A evaluation board.

$V_{IN} = 12V$, $V_{OUT} = 1.8V$, $L = 2.2\mu H$, $T_A = +25^\circ C$, unless otherwise noted.



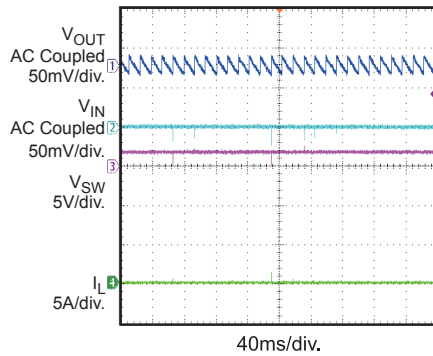
EVB TEST RESULTS *(continued)*

Performance waveforms are tested on the EV8760D-L-00A evaluation board.

$V_{IN} = 12V$, $V_{OUT} = 1.8V$, $L = 2.2\mu H$, $T_A = +25^\circ C$, unless otherwise noted.

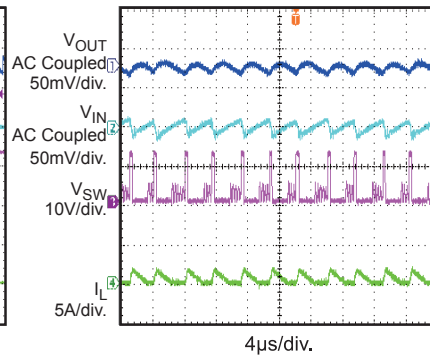
Input/Output Voltage Ripple

$V_{IN} = 12V$, $V_{OUT} = 1.8V$, $I_{OUT} = 0A$



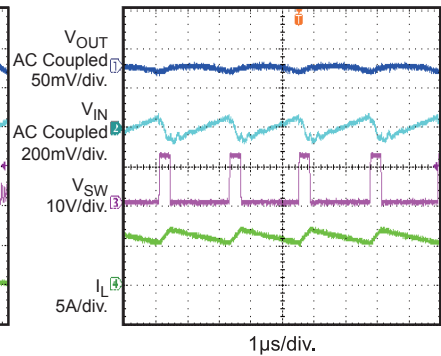
Input/Output Voltage Ripple

$V_{IN} = 12V$, $V_{OUT} = 1.8V$, $I_{OUT} = 0.5A$



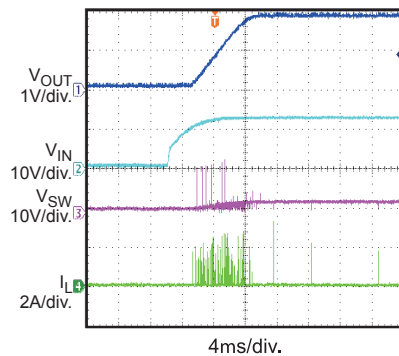
Input/Output Voltage Ripple

$V_{IN} = 12V$, $V_{OUT} = 1.8V$, $I_{OUT} = 6A$



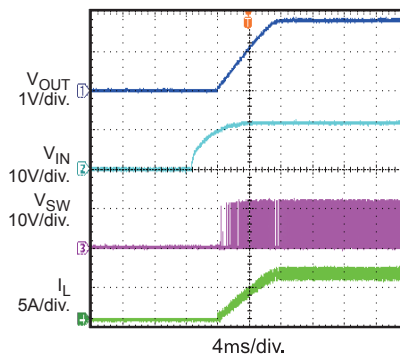
VIN Start Up

$I_{OUT} = 0A$



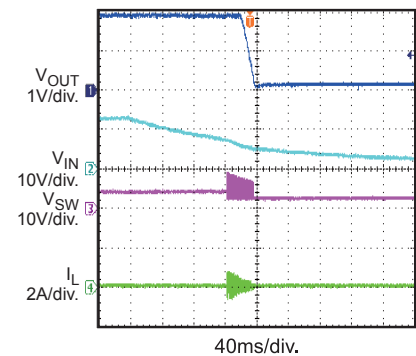
VIN Start Up

$I_{OUT} = 6A$



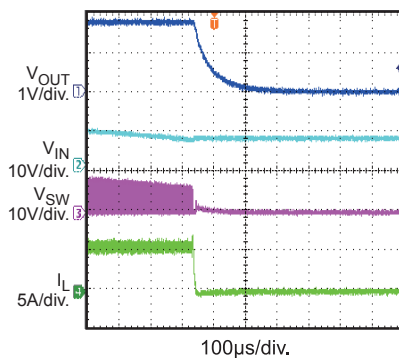
VIN Shut Down

$I_{OUT} = 0A$



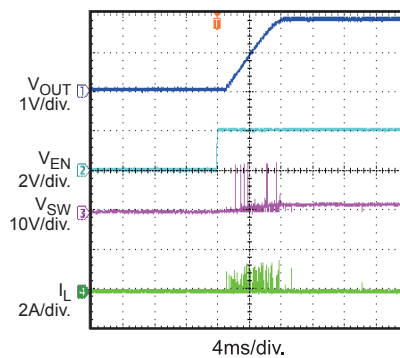
VIN Shut Down

$I_{OUT} = 6A$



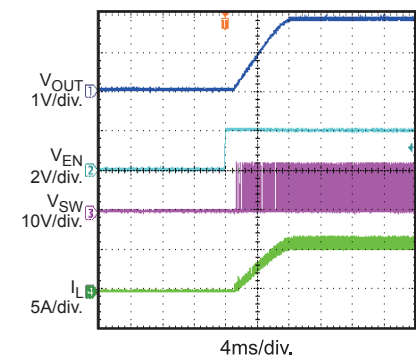
EN Start Up

$I_{OUT} = 0A$



EN Start Up

$I_{OUT} = 6A$



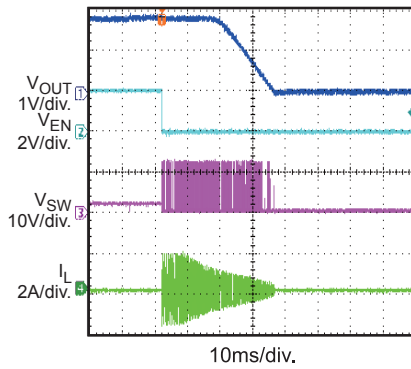
EVB TEST RESULTS *(continued)*

Performance waveforms are tested on the EV8760D-L-00A evaluation board.

$V_{IN} = 12V$, $V_{OUT} = 1.8V$, $L = 2.2\mu H$, $T_A = +25^\circ C$, unless otherwise noted.

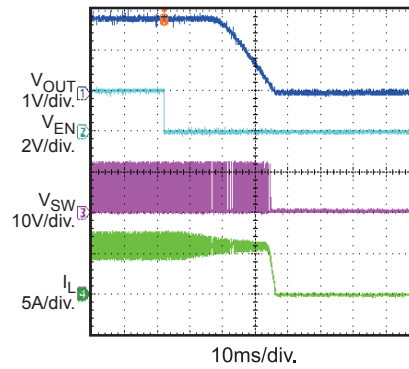
EN Shutdown

$I_{OUT}=0A$



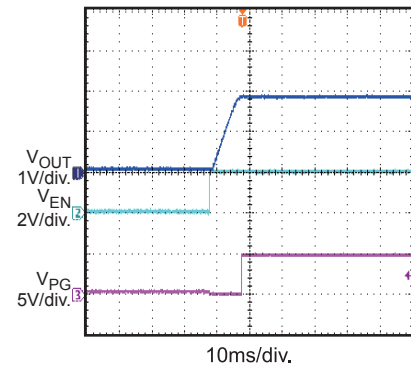
EN Shutdown

$I_{OUT}=6A$



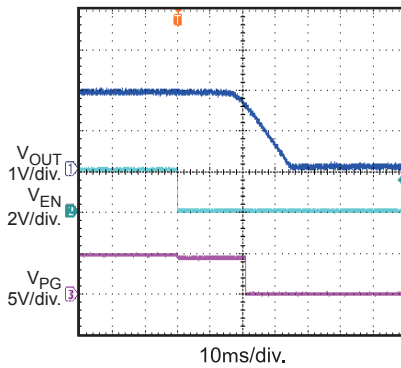
EN Start Up PG

$I_{OUT}=0.5A$



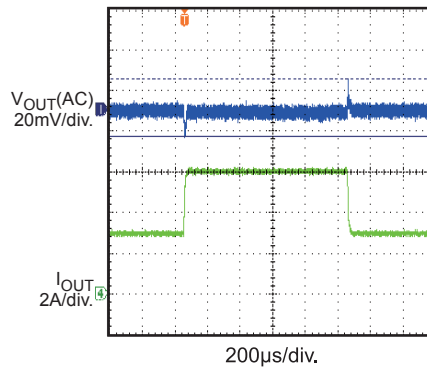
EN Shutdown PG

$I_{OUT}=0.5A$



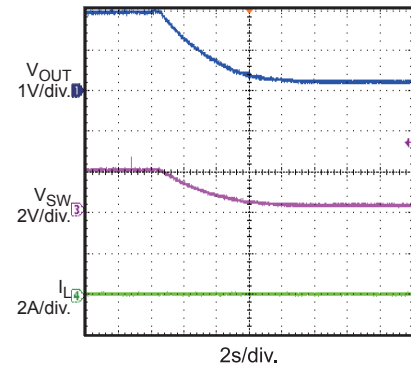
Traient Response

3A-6A, 2.5A/ μs



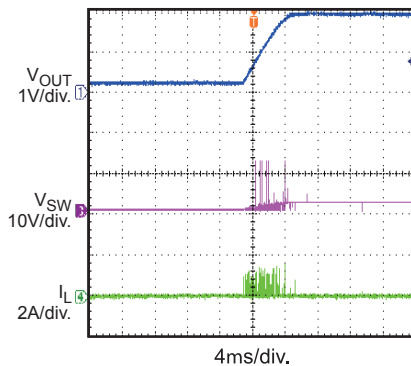
Thermal Shutdown

$I_{OUT}=0A$

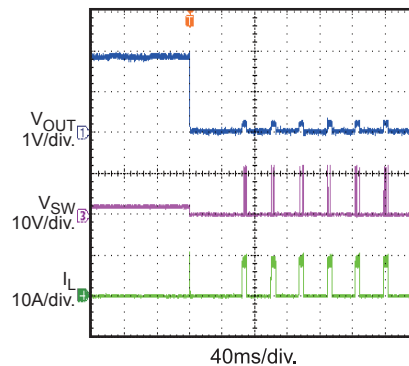


Thermal Recovery

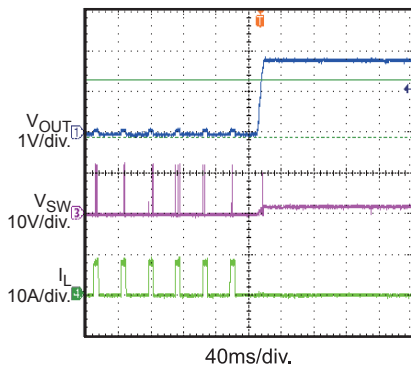
$I_{OUT}=0A$



Short Entry



Short Recovery



PRINTED CIRCUIT BOARD LAYOUT

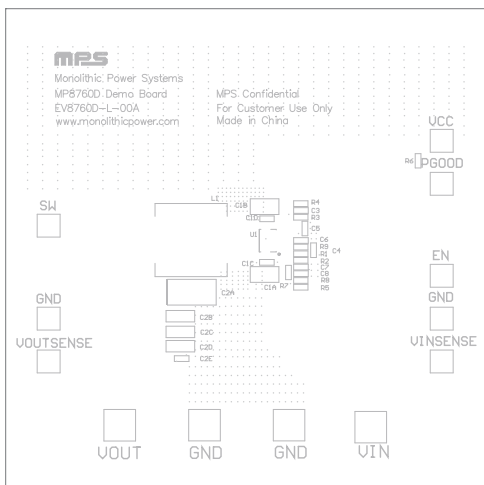


Figure 1: Top Layer, Silkscreen

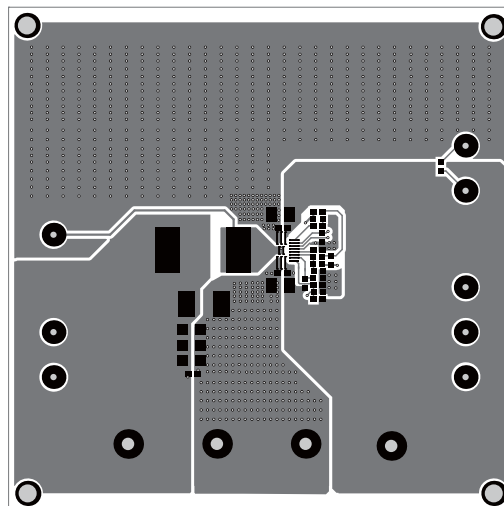


Figure 2: Top Layer

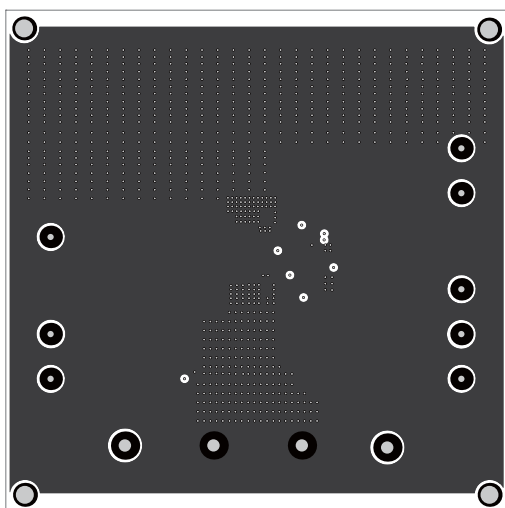


Figure 3: Inner Layer 1

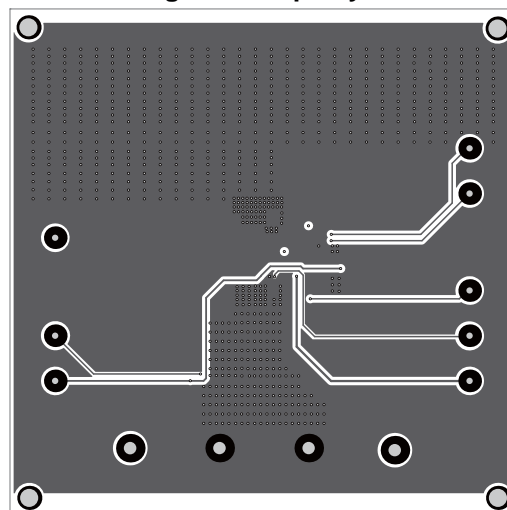


Figure 4: Inner Layer 2

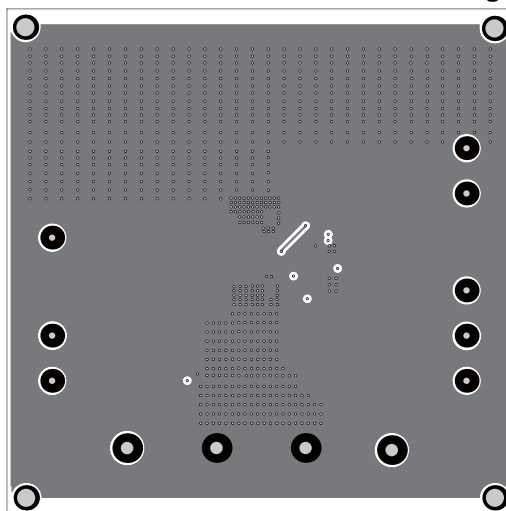


Figure 5: Bottom Layer

QUICK START GUIDE

1. Connect the positive and negative terminals of the load to the VOUT and GND pins, respectively.
2. Preset the power supply output between 8V and 18V, and then turn off the power supply.
3. Connect the positive and negative terminals of the power supply output to the VIN and GND pins, respectively.
4. Turn the power supply on. The MP8760DGL will automatically startup.
5. To use the Enable function, apply a digital input to the EN pin. Drive EN higher than 2V to turn on the regulator or less than 0.4V to turn it off.
6. Use R1 and R2 to set the output voltage with $V_{FB} = 0.611V$. Follow the Application Information section in the device datasheet to select appropriate R1, R2, inductor, and output capacitor values when changing the output voltage.

NOTICE: The information in this document is subject to change without notice. Please contact MPS for current specifications. Users should warrant and guarantee that third party Intellectual Property rights are not infringed upon when integrating MPS products into any application. MPS will not assume any legal responsibility for any said applications.