

# Surface Mount Frequency Mixer

# JMS-2LH+ JMS-2LH

Level 10 (LO Power +10 dBm) 20 to 1000 MHz



CASE STYLE: BH292

## Maximum Ratings

Operating Temperature	-40°C to 85°C
Storage Temperature	-55°C to 100°C
RF Power	50mW
IF Current	40mA

Permanent damage may occur if any of these limits are exceeded.

## Pin Connections

LO	6
RF	3
IF	2
GROUND	1,4,5

## Features

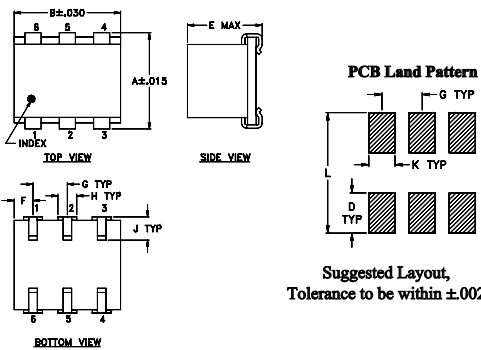
- excellent L-R isolation, up to 60 dB typ.
- miniature surface mount
- J-leads for strain relief and excellent solderability

## Applications

- up & down converters for receivers & transmitters
- UHF TV
- cellular/ISM/GSM

**+RoHS Compliant**  
The +Suffix identifies RoHS Compliance. See our web site for RoHS Compliance methodologies and qualifications

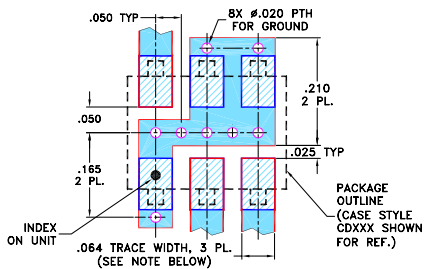
## Outline Drawing



## Outline Dimensions (inch/mm)

A	B	C	D	E	F	G	H	J	K	L	wt
.280	.310	--	.100	.225	.055	.100	.047	.065	.065	.300	grams
7.11	7.87	--	2.54	5.72	1.40	2.54	1.19	1.65	1.65	7.62	0.45

## Demo Board MCL P/N: TB-03 Suggested PCB Layout (PL-052)



## Notes

- A. Performance and quality attributes and conditions not expressly stated in this specification document are intended to be excluded and do not form a part of this specification document.  
 B. Electrical specifications and performance data contained in this specification document are based on Mini-Circuit's applicable established test performance criteria and measurement instructions.  
 C. The parts covered by this specification document are subject to Mini-Circuits standard limited warranty and terms and conditions (collectively, "Standard Terms"); Purchasers of this part are entitled to the rights and benefits contained therein. For a full statement of the Standard Terms and the exclusive rights and remedies thereunder, please visit Mini-Circuits' website at [www.minicircuits.com/MCLStore/terms.jsp](http://www.minicircuits.com/MCLStore/terms.jsp)

## Electrical Specifications

FREQUENCY (MHz)	CONVERSION LOSS (dB)	LO-RF ISOLATION (dB)			LO-IF ISOLATION (dB)			IP3 at center band (dBm)										
		L	M	U	L	M	U											
LO/RF $f_L - f_U$	Mid-Band $m$ Total Range Max.	Typ.	Min.	Typ.	Min.	Typ.	Min.	Typ.										
20-1000	DC-1000	6.5	.10	7.5	9.0	60	40	48	25	37	20	45	30	35	20	27	11	20

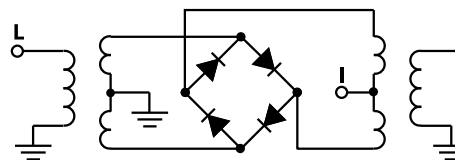
1 dB COMP: +5 dBm typ.  
Phase detection, positive polarity

L = low range [ $f_L$  to  $10 f_L$ ]  
m = mid band [ $2f_L$  to  $f_U/2$ ]  
M = mid range [ $10 f_L$  to  $f_U/2$ ]  
U = upper range [ $f_U/2$  to  $f_U$ ]

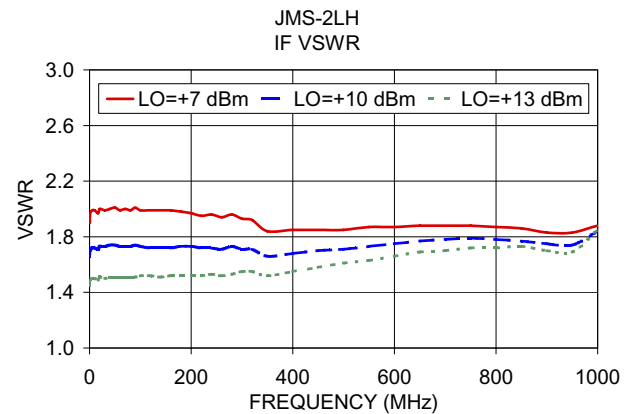
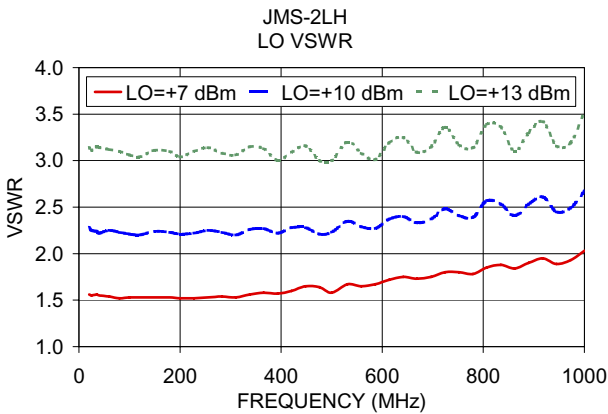
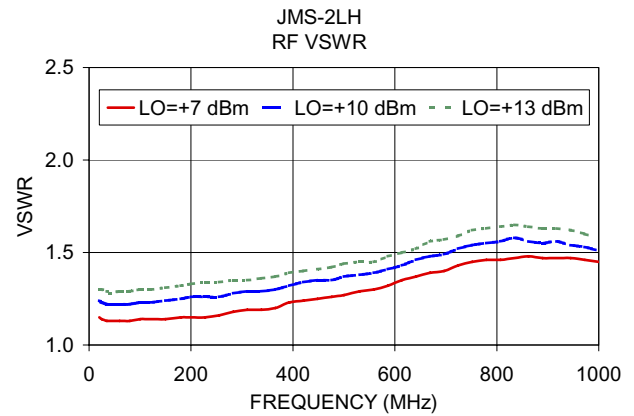
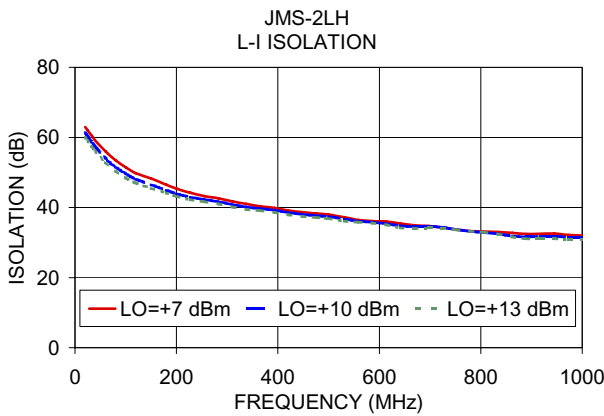
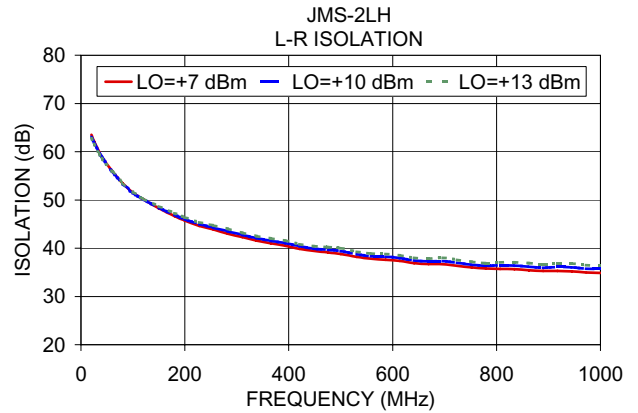
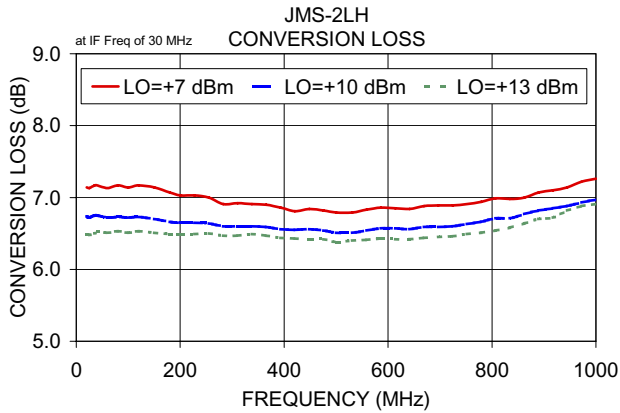
## Typical Performance Data

Frequency (MHz)		Conversion Loss (dB)	Isolation L-R (dB)	Isolation L-I (dB)	VSWR RF Port (:1)	VSWR LO Port (:1)
RF	LO	LO +17dBm	LO +17dBm	LO +17dBm	LO +17dBm	LO +17dBm
20.10	50.10	6.74	62.98	61.31	1.24	2.28
40.10	70.10	6.75	58.93	57.30	1.22	2.22
100.10	130.10	6.72	51.46	49.64	1.23	2.21
150.10	180.10	6.70	48.38	46.49	1.24	2.24
200.10	230.10	6.65	46.01	43.92	1.26	2.21
255.27	285.27	6.64	44.26	42.27	1.26	2.25
310.45	340.45	6.60	42.75	40.85	1.29	2.20
365.62	395.62	6.59	41.54	39.67	1.30	2.27
420.79	450.79	6.55	40.42	38.53	1.34	2.28
475.96	505.96	6.54	39.69	37.65	1.35	2.21
500.10	530.10	6.51	39.42	37.42	1.37	2.23
558.72	588.72	6.54	38.36	36.11	1.39	2.29
613.89	643.89	6.57	37.95	35.34	1.43	2.37
669.07	699.07	6.59	37.29	34.51	1.48	2.33
724.24	754.24	6.60	36.99	34.33	1.52	2.48
779.41	809.41	6.66	36.37	33.21	1.55	2.39
834.58	864.58	6.71	36.41	32.42	1.58	2.53
889.76	919.76	6.82	35.95	31.60	1.55	2.53
944.93	974.93	6.88	36.03	31.80	1.54	2.45
1000.10	1030.10	6.97	35.70	31.47	1.51	2.67

## Electrical Schematic



## Performance Charts



### Notes

- A. Performance and quality attributes and conditions not expressly stated in this specification document are intended to be excluded and do not form a part of this specification document.
- B. Electrical specifications and performance data contained in this specification document are based on Mini-Circuit's applicable established test performance criteria and measurement instructions.
- C. The parts covered by this specification document are subject to Mini-Circuits standard limited warranty and terms and conditions (collectively, "Standard Terms"); Purchasers of this part are entitled to the rights and benefits contained therein. For a full statement of the Standard Terms and the exclusive rights and remedies thereunder, please visit Mini-Circuits' website at [www.minicircuits.com/MCLStore/terms.jsp](http://www.minicircuits.com/MCLStore/terms.jsp)