

Surface Mount Frequency Mixer

JMS-2MH+ JMS-2MH

Level 13 (LO Power +13 dBm) 20 to 1000 MHz



CASE STYLE: BH292

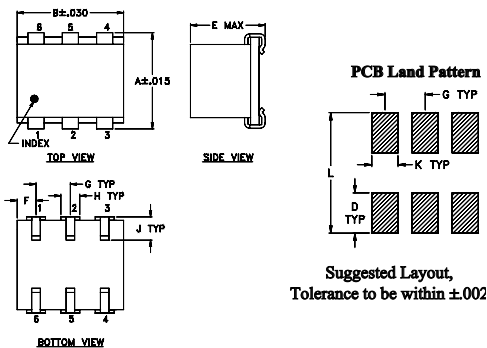
Maximum Ratings

Operating Temperature	-40°C to 85°C
Storage Temperature	-55°C to 100°C
RF Power	200mW
IF Current	40mA
Permanent damage may occur if any of these limits are exceeded.	

Pin Connections

LO	6
RF	3
IF	2
GROUND	1,4,5

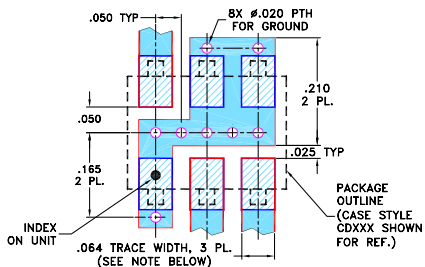
Outline Drawing



Outline Dimensions (inch)

A	B	C	D	E	F	G	H	J	K	L	wt
.280	.310	--	.100	.225	.055	.100	.047	.065	.065	.300	grams
7.11	7.87	--	2.54	5.72	1.40	2.54	1.19	1.65	1.65	7.62	0.45

Demo Board MCL P/N: TB-03 Suggested PCB Layout (PL-052)



- NOTES: 1. TRACE WIDTH IS SHOWN FOR ROGERS RO4350B WITH DIELECTRIC THICKNESS .030" ± .002"; COPPER: 1/2 OZ. EACH SIDE. FOR OTHER MATERIALS TRACE WIDTH MAY NEED TO BE MODIFIED.
2. BOTTOM SIDE OF THE PCB IS CONTINUOUS GROUND PLANE.

- DENOTES PCB COPPER LAYOUT WITH SMOBC (SOLDER MASK OVER BARE COPPER)
- DENOTES COPPER LAND PATTERN FREE OF SOLDER MASK

Notes

- A. Performance and quality attributes and conditions not expressly stated in this specification document are intended to be excluded and do not form a part of this specification document.
B. Electrical specifications and performance data contained in this specification document are based on Mini-Circuit's applicable established test performance criteria and measurement instructions.
C. The parts covered by this specification document are subject to Mini-Circuits standard limited warranty and terms and conditions (collectively, "Standard Terms"); Purchasers of this part are entitled to the rights and benefits contained therein. For a full statement of the Standard Terms and the exclusive rights and remedies thereunder, please visit Mini-Circuits' website at www.minicircuits.com/MCLStore/terms.jsp

Features

- excellent L-R isolation, up to 63 dB typ.
- miniature surface mount
- J-leads for strain relief and excellent solderability

Applications

- up & down converters for receivers & transmitters
- VHF/UHF
- cellular/ISM/GSM

Electrical Specifications

FREQUENCY (MHz)		CONVERSION LOSS (dB)				LO-RF ISOLATION (dB)						LO-IF ISOLATION (dB)						IP3 at center band (dBm)
LO/RF	IF	Mid-Band m		Total Range Max.	L	M	U	L	M	U	L	M	U	L	M	U	Typ.	
f_L - f_U		\bar{X}	σ	Max.	Typ.	Min.	Typ.	Min.	Typ.	Min.	Typ.	Min.	Typ.	Min.	Typ.	Min.	Typ.	
20-1000	DC-1000	7.0	.15	8.4	9.5	63	40	50	28	35	20	56	30	47	22	37	20	22

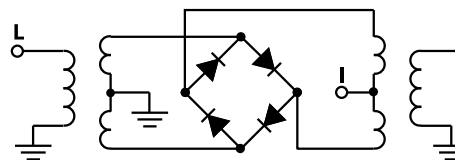
1 dB COMP.: +9 dBm typ.
Phase detection, positive polarity

L = low range [f_L to $10 f_L$]
M = mid band [$10 f_L$ to $f_U/2$]
U = upper range [$f_U/2$ to f_U]

Typical Performance Data

Frequency (MHz)		Conversion Loss (dB)	Isolation L-R (dB)	Isolation L-I (dB)	VSWR RF Port (:1)	VSWR LO Port (:1)
RF	LO	LO +13dBm	LO +13dBm	LO +13dBm	LO +13dBm	LO +13dBm
5.00	35.00	6.87	67.46	60.42	1.26	2.23
10.00	40.00	6.71	61.14	54.89	1.16	2.14
20.00	50.00	6.81	55.36	49.28	1.12	2.06
35.15	65.15	6.82	50.90	44.75	1.13	2.13
50.00	80.00	6.86	48.33	42.38	1.13	2.09
65.30	95.30	6.76	46.42	40.39	1.13	2.04
100.00	70.00	6.73	44.03	37.91	1.14	2.02
155.76	125.76	6.54	43.58	37.14	1.15	1.97
200.00	170.00	6.54	42.48	36.16	1.16	1.95
246.21	216.21	6.62	40.92	34.54	1.19	1.98
306.52	276.52	6.76	38.19	31.82	1.23	1.93
366.82	336.82	6.79	34.91	28.84	1.29	2.04
427.12	397.12	6.59	32.18	26.69	1.35	2.09
500.00	470.00	6.52	29.15	24.87	1.44	2.11
577.88	547.88	6.74	26.48	22.60	1.54	2.15
668.33	638.33	7.07	24.41	20.55	1.68	2.21
758.79	728.79	7.37	22.47	18.54	1.82	2.31
849.24	819.24	7.86	20.85	16.52	1.98	2.47
909.55	879.55	8.30	19.83	15.54	2.18	2.56
1000.00	970.00	8.73	19.01	14.41	2.43	2.61

Electrical Schematic

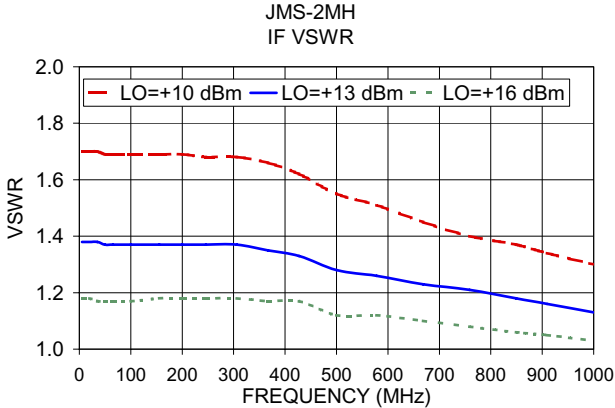
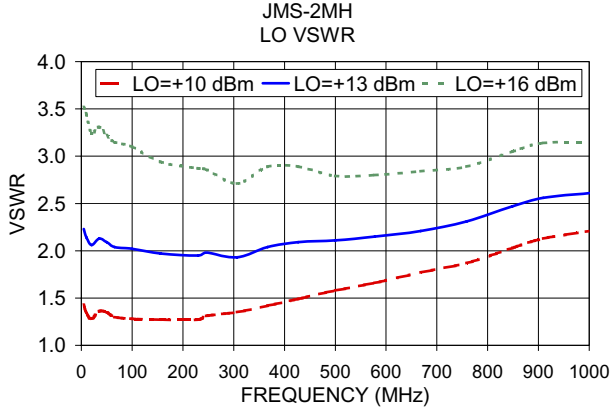
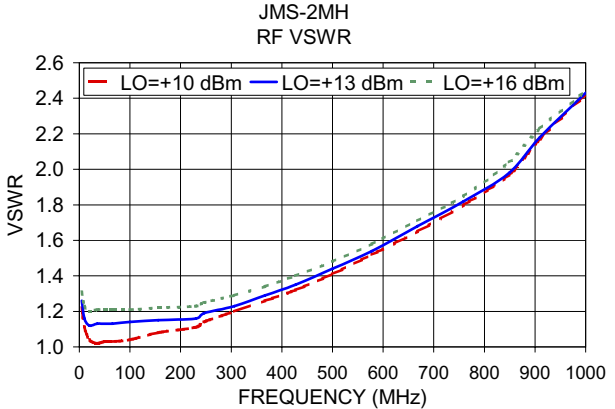
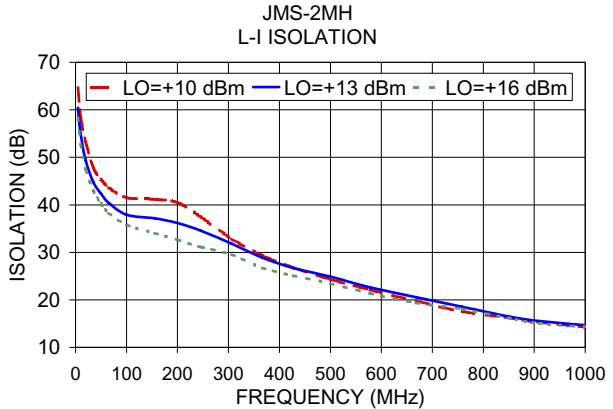
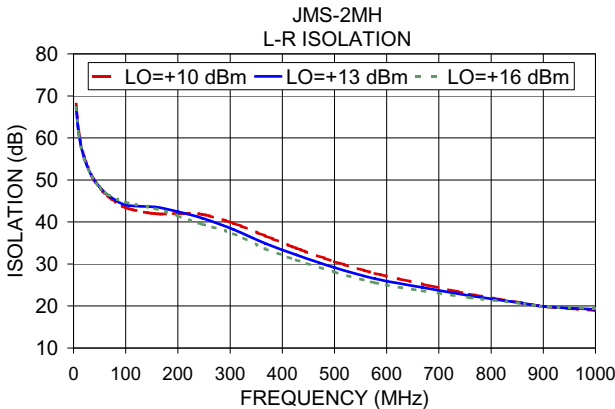
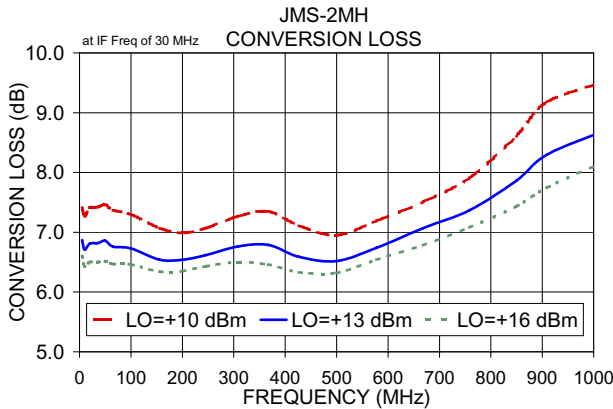


Mini-Circuits

www.minicircuits.com P.O. Box 350166, Brooklyn, NY 11235-0003 (718) 934-4500 sales@minicircuits.com

REV. C
M151107
JMS-2MH
ED-3471
DJ/CP/AM
150814
Page 1 of 2

Performance Charts



Notes

- A. Performance and quality attributes and conditions not expressly stated in this specification document are intended to be excluded and do not form a part of this specification document.
- B. Electrical specifications and performance data contained in this specification document are based on Mini-Circuit's applicable established test performance criteria and measurement instructions.
- C. The parts covered by this specification document are subject to Mini-Circuit's standard limited warranty and terms and conditions (collectively, "Standard Terms"); Purchasers of this part are entitled to the rights and benefits contained therein. For a full statement of the Standard Terms and the exclusive rights and remedies thereunder, please visit Mini-Circuit's website at www.minicircuits.com/MCLStore/terms.jsp

